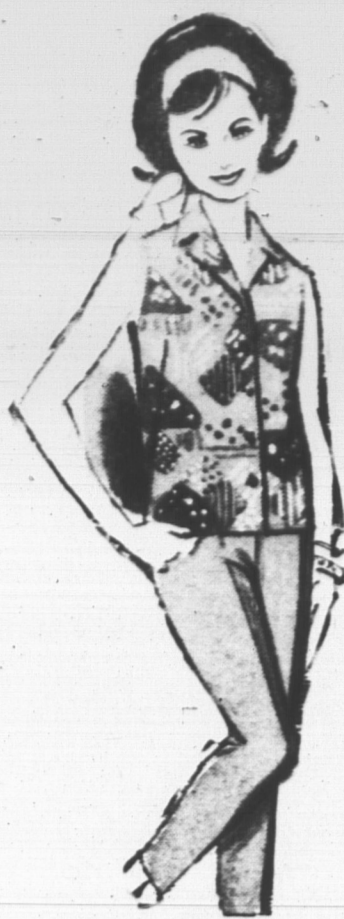


There's so much for you at EATON'S



Bonnie Brae Boys' Shorts

Cotton Sheen Shorts, all round elastic waist, zipper, 2 front pockets, sizes 2 to 6x, colours, navy, brown and charcoal.
pair **1.69**

Little Girls' Shorts

In sport sheen, flat front waistband, elasticized back waist, tab and button trim, colours yellow, blue and pink. Sizes 3 to 6x.
pair **1.39**

Teens Jamaica Shorts

Terylene and cotton. Sizes 10 to 14x.
pair **3.19**

Bonnie Brae Boys' Gabardine Shorts

Continental style, sizes 2 to 6x.
pair **1.99**

Nylon Carriage Cover Net

Free running elastic edge, white.
each **1.49**

Jamaica Shorts

In cotton sport twill, colours red, pink and aqua. Sizes 7 to 14.
pair **2.29**

Bonnie Brae Boys' Cotton Sheen Boxer Shorts

In blue, brown and charcoal. Sizes 3 to 6x.
pair **1.29**

Bellefair Shorts

Terylene and cotton, flat waistband, side zipped opening, colours coral pink and blue. Sizes 8 to 14.
Jamaica shorts pair **3.19**
Short shorts pair **2.99**

Girls' T. Shirts

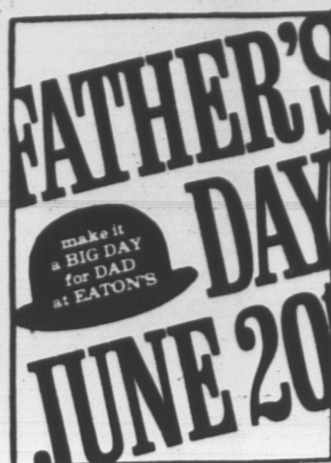
Combed cotton knits, sleeveless and short sleeves, round neck and turtle neck style, assorted stripes. Sizes 8 to 14.
each **1.99 to 3.99**

Boy's Bonnie Brae Swim Trunks

Boxer style in woven cotton plaid, elasticized waist, 1 pocket with button closing. Sizes 4 to 6x.
pair **1.99**

Girls' Bonnie Brae Swim Suits

Stretch nylon 2 pce., 1 pce. blouseon style in striped tricot. 2 pce. blouseon style, arnel top with stretchy nylon bottom. 1 pce. elasticized embroidered-stitch sateen top, box pleated overskirt. 1 pce. checked cotton with solid colour piping. Sizes 2 to 6x.
2.99 to 4.99



MEN'S BIRKDALE DRILL PANTS

Scotchgard finish, sanforized, heavy duty, reinforced pocketing, colours green, charcoal, antelope, sizes 30-44.
each **5.79**

MEN'S COMMANDER

7.5 oz. drill pants, sanforized, tunnel loops, dome fastener at waist, cuffed, colours green, charcoal and antelope, sizes 32-44.
each **3.99**

MEN'S BIRKDALE COTTON GABARDINE SLACKS

Scotchgard treated, slim cut, no pleats, wash-and-wear make and trim, hook and eye reinforced fastener, sizes 30-38. Sell from **5.49 to 5.79 ea.**

MEN'S WALKING SHORTS

1/2 boxer waist and regular waistband, sanforized, washable, comes in colours beige, green, antelope and blue, sizes 32-42.
each **3.99**

Men's Birkdale Short Sleeve Sport Shirts

Sanforized, mercerized yarn dyed cotton, lined permastay collar, regular full cut body styled and tapered body style. Comes in assorted shades of blue, tan and green, also stripes and assorted checks, size small, medium and large.

4.50

Men's Birkdale Terylene & Cotton Slacks

Scotchgard treated, comes in plain front with belt loops, plain front with adjustable outside tab, colours beige, light olive, antelope, sizes 30-44.

8.98



Ladies Slims

Assorted Materials, Tarpon Plaids, Cotton Stretch, Terylene and Wool Worsted. Sizes 10 to 20 and 38 to 44.
PAIR **2.98 to 16.95**

Ladies Shorts

Short, Jamaica and Bermuda. Assorted materials and colours. Sizes 10 to 20.
PAIR **1.98 to 11.95**

Lawn and Border Fencing

Green, approx. 18" high, 25' roll. Special, each **1.99**
50' roll. Special, each **3.89**

Rotary Lawn Mower

20" cut, 2 1/2 H.P., Briggs & Stratton engine, folding handle for easy transportation.

EACH **65.88**

Holiday Riding Mower

4 H.P. Briggs & Stratton Engine, forward and reverse gears, 24" cut.

Each, **289.88**

'Go Outdoors with Good Equipment For Holiday Pleasure'

Truline Deluxe Tourist Tent

Two-tone water repellent tent drill, with tubular steel outside assembly. Side windows about 12 x 24", fibreglas screening. 36" zippered door, storm flops and aluminum zipper. Polypropylene ropes and steel pegs. About 9' x 9'. Sleeps three. EA. **99.95**

Truline Campmaster Sleeping Bags

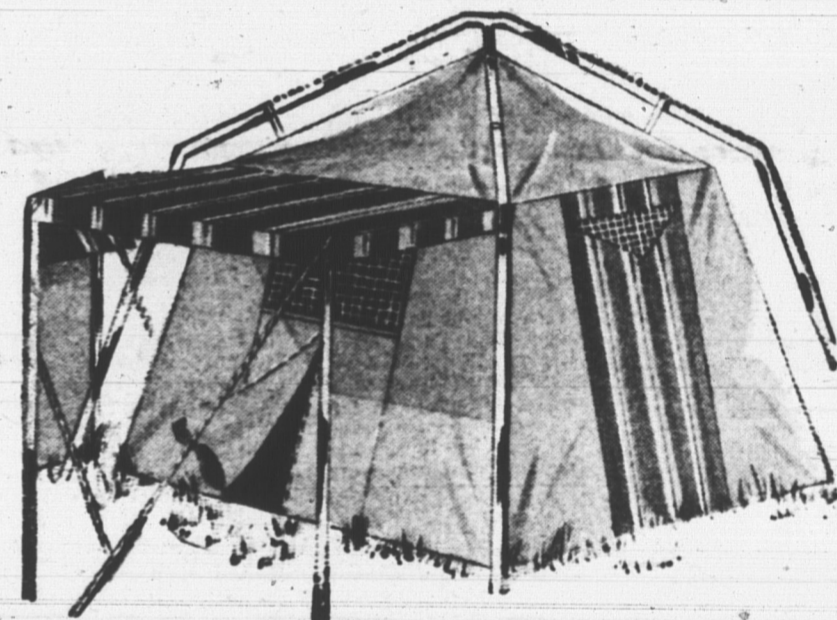
Jumbo size, water repellent poplin outer shell, flannelette lining. About 4 lb. thermocel insulation, 100" aluminum zipper. EA. **13.95**

Camp Cot

Cotton dark cover, breaks down for easy storage. Special, each **5.97**

Camp Stove

2 burner style, wind screens, burns naphtha gas. Special, each **13.99**



EATON'S BULLDOG Safety Glide Tires

7 good reasons why you should install Bulldog Safety Glide Tires on your car:

1. Contour Safety Shoulders... put more rubber on the tire's outer edges, where it wears fastest; results in sure-footed steering, more traction and greater stability on corners and curves. Adds many miles to the life of the tire too.
2. Polybutadiene Tread Rubber... helps give softer, more comfortable rides, yet is strong and resilient to resist cuts and bruises on rough roads.
3. Du Pont Nylon Cords... 4 plies of reliable du Pont nylon provide strength for extra protection at high speeds.
4. Angle siped Safety-Tread... deep, wide tread pattern with scientifically angled siping provides positive traction on almost any surface, wet or dry.
5. Premium Quality... better than original equipment on most cars.
6. No Time Limit Road Hazard Warranty... allowance based on amount of tread remaining.
7. Immediate Installation... at low cost, available at or through any Eaton's Store or Catalogue Office.

7.50 7.75-14 Tubeless Black-wall.

15.88

6.70 7.75-15 Tube-type Black-wall.

13.88

TUBE-TYPE BLACKWALL EACH **6.70/7.75-15 13.88**

TUBELESS BLACKWALL **6.70/7.15-15 15.88**
7.50/7.75-14 15.88
5.60/5.90/6.00-13 No. 12.88

TUBELESS "SLIMLINE" WHITEWALL **6.70/7.75-15 17.88**
7.50/7.25-14 17.88
5.90/6.00-13 No. 13.88

Not contour-shoulder type

1.99 HOUSEWARE SPECIALS

Ironing Board Pad & Cover

Teflon treated to prevent scorching with cotton pad. Special, each **1.99**

Mincer

Metal construction with steel utility blade. Special, each **1.99**

Knife Holder

Wooden knife holder with hand painted design. Special, each **1.99**

Patio Table

Attractive white metal patio table, about 18" in diameter. Special, each **1.99**

Pet Litter

25 lb. bag. Special, each **1.99**

T. EATON CO.
MARITIMES LIMITED
CHARLOTTETOWN BRANCH