

DAILY MARKET QUOTATIONS

SUMMARY

By THE CANADIAN PRESS
Toronto: Market higher, trading moderate.
New York: Market higher, trading active.
Montreal: Market mixed, trading moderately active.

CURRENCIES

MONTREAL (CP) — U.S. dollar in terms of Canadian funds up 1-16 to \$1.07 3/32. Pound sterling up 1/4 to \$3.02.

NEW YORK

NEW YORK (AP) — The stock market took an upward jolt Wednesday but there were plenty of soft spots in the list. Trading was more active than previous.

The rise followed two days of decline. Volume increased to 5,800,000 shares from 5,140,000 Tuesday.

Some of the electronics issues which have come back into favor were prominent again together with an assortment of aerospace defense stocks.

All big three motors were up, however. The Dow Jones industrial average advanced 1.50 to 337.12.

Of 1,575 issues traded, 613 rose and 496 fell. The Associated Press average of 60 stocks advanced 7 to 341.3.

The list was given some fresh leadership when Woolworth made an unannounced trip to the top of the most active list, rising 1/4 to 31 1/2 on 120,000 shares.

Woolworth's chairman told the annual shareholders' meeting that the company expects record sales and earnings this year.

Twelve of the 15 most active stocks were gainers, three were losers. Electronic Associates rose 1/4.

General Instrument I and Tektronix I. Burlington Industries proposed a 2-for-1 stock split and advanced 1/2.

Worthington Corp. also proposed a 2-for-1 split but the stock was off 1/4. Greyhound raised its dividend and the issue gained 1/4.

International Nickel rose 1/4 among Canadian issues traded while Distillers' Seagrams gained 1/4.

Canadian Pacific, Walker Gerdman lost 1/4. Prices were irregularly lower on the American exchange.

Volume was 2,200,000 shares compared with 1,950,000 Tuesday. Canadian Marconi gained 1/4.

While Scurry Rainbow Oil fell 1/4, Canadian Javelin and Brazilian Tracton I and II were up.

What stocks did? Wed. Tues. Advances 613 523. Declines 486 566. Unchanged 276 287. Total issues 1375 1376.

NEW YORK CLOSING STOCKS. By The Associated Press. 300 Steel 30 1/2. 300 West 30 1/2. 300 NY Cent 30 1/2.

300 Bof Wm 30 1/2. 300 Bof Wm 30 1/2. 300 Bof Wm 30 1/2. 300 Bof Wm 30 1/2.

300 Bof Wm 30 1/2. 300 Bof Wm 30 1/2. 300 Bof Wm 30 1/2. 300 Bof Wm 30 1/2.

300 Bof Wm 30 1/2. 300 Bof Wm 30 1/2. 300 Bof Wm 30 1/2. 300 Bof Wm 30 1/2.

300 Bof Wm 30 1/2. 300 Bof Wm 30 1/2. 300 Bof Wm 30 1/2. 300 Bof Wm 30 1/2.

300 Bof Wm 30 1/2. 300 Bof Wm 30 1/2. 300 Bof Wm 30 1/2. 300 Bof Wm 30 1/2.

300 Bof Wm 30 1/2. 300 Bof Wm 30 1/2. 300 Bof Wm 30 1/2. 300 Bof Wm 30 1/2.

300 Bof Wm 30 1/2. 300 Bof Wm 30 1/2. 300 Bof Wm 30 1/2. 300 Bof Wm 30 1/2.

300 Bof Wm 30 1/2. 300 Bof Wm 30 1/2. 300 Bof Wm 30 1/2. 300 Bof Wm 30 1/2.

300 Bof Wm 30 1/2. 300 Bof Wm 30 1/2. 300 Bof Wm 30 1/2. 300 Bof Wm 30 1/2.

300 Bof Wm 30 1/2. 300 Bof Wm 30 1/2. 300 Bof Wm 30 1/2. 300 Bof Wm 30 1/2.

300 Bof Wm 30 1/2. 300 Bof Wm 30 1/2. 300 Bof Wm 30 1/2. 300 Bof Wm 30 1/2.

PRODUCE

MONTREAL (CP) — Agricultural department quotations: Eggs: Wholesale prices to country stations for cases: Extra-large 36, large 35, medium 32, small 28, B 30, C 23.

Offerings adequate. Demand fair. Butter: Current receipts tend, erable 92 score 54 1/2; 93 score 55 1/2.

Cheese: Delivered—Montreal, waxed, current receipts whole sale Quebec white 37 1/2; colored 38.

Skim milk powder: Spray process No. 1 in bags 14 1/2; roller process No. 1 in bags 13 1/2; feed 15; butter milk powder feed 11-12; whey powder 4 cents.

Potatoes: Wholesale selling prices, new N.B. 50s 3.10-3.20; 10s 40-71; P.E.I. 75s 4.75-4.90; 50s 3.30-3.40; 10s 73-75.

LIVESTOCK

MONTREAL (CP) — Cattle and calf prices were steady in active trading Wednesday on the east end market.

Hogs were 75 cents higher and cows steady. Receipts: 188 cattle; 215 calves; 22 hogs; 8 sheep and lambs.

Medium steers 20.50 - 22.75, common 15-19.50. Common heifers 12-17.25. Good cows 15.50; medium 14-15; common 12-13.50; canners and cutters 10-11.50.

Good vealers 24-27; medium 20-23; common 13-19. Hogs grade A 29.50; grade B 18.50.

Few sheep 3.50; good quality sheep 11-30. Bacon: Lake 25.00 3/4; 26 3/4; 28 3/4.

SI Culum 100 215 215 215. St Lucie 20 15 15 15. Sagaw 8 50 25 25 1/2.

Silver T 2000 70 70 70. Silver T 2000 70 70 70. Silver T 2000 70 70 70.

Silver T 2000 70 70 70. Silver T 2000 70 70 70. Silver T 2000 70 70 70.

Silver T 2000 70 70 70. Silver T 2000 70 70 70. Silver T 2000 70 70 70.

Silver T 2000 70 70 70. Silver T 2000 70 70 70. Silver T 2000 70 70 70.

Silver T 2000 70 70 70. Silver T 2000 70 70 70. Silver T 2000 70 70 70.

Silver T 2000 70 70 70. Silver T 2000 70 70 70. Silver T 2000 70 70 70.

Silver T 2000 70 70 70. Silver T 2000 70 70 70. Silver T 2000 70 70 70.

Silver T 2000 70 70 70. Silver T 2000 70 70 70. Silver T 2000 70 70 70.

Silver T 2000 70 70 70. Silver T 2000 70 70 70. Silver T 2000 70 70 70.

Silver T 2000 70 70 70. Silver T 2000 70 70 70. Silver T 2000 70 70 70.

Silver T 2000 70 70 70. Silver T 2000 70 70 70. Silver T 2000 70 70 70.

Silver T 2000 70 70 70. Silver T 2000 70 70 70. Silver T 2000 70 70 70.

Silver T 2000 70 70 70. Silver T 2000 70 70 70. Silver T 2000 70 70 70.

Silver T 2000 70 70 70. Silver T 2000 70 70 70. Silver T 2000 70 70 70.

Silver T 2000 70 70 70. Silver T 2000 70 70 70. Silver T 2000 70 70 70.

Silver T 2000 70 70 70. Silver T 2000 70 70 70. Silver T 2000 70 70 70.

Silver T 2000 70 70 70. Silver T 2000 70 70 70. Silver T 2000 70 70 70.

Silver T 2000 70 70 70. Silver T 2000 70 70 70. Silver T 2000 70 70 70.

Silver T 2000 70 70 70. Silver T 2000 70 70 70. Silver T 2000 70 70 70.

Table with columns for various commodities and their prices. Includes items like Wheat, Corn, Soybeans, etc.

Table with columns for various commodities and their prices. Includes items like Flour, Sugar, etc.

Table with columns for various commodities and their prices. Includes items like Lard, Tallow, etc.

Table with columns for various commodities and their prices. Includes items like Hides, etc.

Table with columns for various commodities and their prices. Includes items like Wool, etc.

Table with columns for various commodities and their prices. Includes items like Tanned Hides, etc.

Table with columns for various commodities and their prices. Includes items like Tanned Hides, etc.

Table with columns for various commodities and their prices. Includes items like Tanned Hides, etc.

Table with columns for various commodities and their prices. Includes items like Tanned Hides, etc.

Table with columns for various commodities and their prices. Includes items like Tanned Hides, etc.

Table with columns for various commodities and their prices. Includes items like Tanned Hides, etc.

Table with columns for various commodities and their prices. Includes items like Tanned Hides, etc.

Table with columns for various commodities and their prices. Includes items like Tanned Hides, etc.

Table with columns for various commodities and their prices. Includes items like Tanned Hides, etc.

Table with columns for various commodities and their prices. Includes items like Tanned Hides, etc.

Table with columns for various commodities and their prices. Includes items like Tanned Hides, etc.

Table with columns for various commodities and their prices. Includes items like Tanned Hides, etc.

Table with columns for various commodities and their prices. Includes items like Tanned Hides, etc.

Table with columns for various commodities and their prices. Includes items like Tanned Hides, etc.

Table with columns for various commodities and their prices. Includes items like Tanned Hides, etc.

Table with columns for various commodities and their prices. Includes items like Tanned Hides, etc.

Table with columns for various commodities and their prices. Includes items like Tanned Hides, etc.

Table with columns for various commodities and their prices. Includes items like Tanned Hides, etc.

Table with columns for various commodities and their prices. Includes items like Tanned Hides, etc.

Table with columns for various commodities and their prices. Includes items like Tanned Hides, etc.

Table with columns for various commodities and their prices. Includes items like Tanned Hides, etc.

Table with columns for various commodities and their prices. Includes items like Tanned Hides, etc.

Table with columns for various commodities and their prices. Includes items like Tanned Hides, etc.

Table with columns for various commodities and their prices. Includes items like Tanned Hides, etc.

Table with columns for various commodities and their prices. Includes items like Tanned Hides, etc.

Table with columns for various commodities and their prices. Includes items like Tanned Hides, etc.

Table with columns for various commodities and their prices. Includes items like Tanned Hides, etc.

Increased Sales Expected From New Computer System

By BOB MACKENZIE. Requests for information and payment data will go to head office at the end of each day, and the computer will supply needed information via the teletypewriter during the night so it will be available to district offices the next morning.

PROCESSED AUTOMATIC. This, Mr. Randall said, will allow automatic processing and a 24-hour service for information.

The master computer also will automatically prepare coded bills to be sent to policy holders.

When paid at district offices, the bills will be marked by pencil and inserted into the satellite units which will relay the information back to the master unit. This will keep master records up to date and eliminate the need for duplicating extensive files at different offices.

Cost of the satellite units was not given, but a spokesman said the desk-size computers will cost "less than \$10,000" in the U.S.

Installation of the U.S. network already has started, and the Canadian company hopes to start work in 1968 so existing records can be fed into the master computer by the time the network is complete.

Chinese Push Gold Price Up

LONDON (Reuters)—A continuing demand for gold believed to have come from China pushed up the price on the London stock market Wednesday.

On several occasions this year China seemed to have been the only significant special buyer, although Spain and Burma were also thought to have been in the market but on a much smaller scale.

Purchases by China, estimated at £25,000,000 \$75,000,000 so far this year, are not intrinsically large but could be significant.

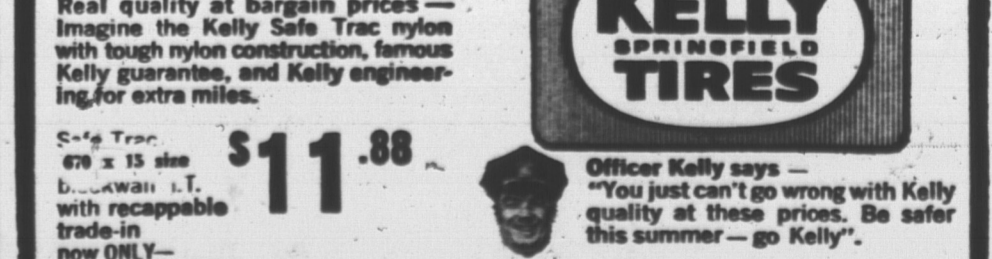
The price on Wednesday was \$35.10 per ounce, an ounce.

STOCKS — BONDS

ROYAL SECURITIES Corporation Ltd. 127 Grafton St., Ch'own Telephone: 4-5533 Alex. M. Wilson, Mgr.

WANTED

DRIVERS WHO WANT A SAFER RIDE THIS SUMMER



Real quality at bargain prices — Imagine the Kelly Safe Trac nylon with tough nylon construction, famous Kelly guarantee, and Kelly engineering for extra miles.

PROVED AND IMPROVED FOR OVER 70 YEARS

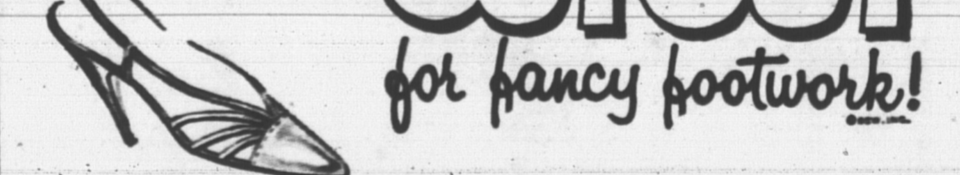
RE THE SAFER KELLY ROAD

See one of the authorized Kelly dealers below:

Capital Auto Supply | OK Tire Store 181 Great George St. 62 St. Peters Road Charlottetown, P.E.I. Charlottetown, P.E.I.

Nelson & Fitzpatrick | James Baglole Tire Montague, P.E.I. Main Street, O'Leary, P. E. I.

CUTOUT for fancy footwork!



Fashionable feet are pretty, coolly bared for summer with new cutout shoe styles from our latest collection. You'll find your favorite classics here, too!

9.95

THE BAREFOOT LOOK! It's the sandals season, with good reason... for cool comfort and pretty feet, you can't beat our selection of new summer steppers

ITALIAN SANDALS White, Tan, Brown 3.95 — 5.95

Ladies White Summer SHOES The latest styles are in ladies graduation or wedding shoes are at LePage's. You'll find just the correct style and fit to please you.

Priced From 7.95

LABIES CHILDREN'S HENS BOYS

HYNDMAN & CO. LIMITED MORTGAGE AND INSURANCE BROKERS Dial 4-6567 57 Queen St.

87 1/2% MORTGAGES On new or improved city homes or for re-financing 7% on standard two thirds loans on first class security — slightly higher on others.

We also have facilities for second mortgages, and for the new 75% first mortgages.

ed in and talk over your requirements with

HYNDMAN & CO. LIMITED MORTGAGE AND INSURANCE BROKERS Dial 4-6567 57 Queen St.