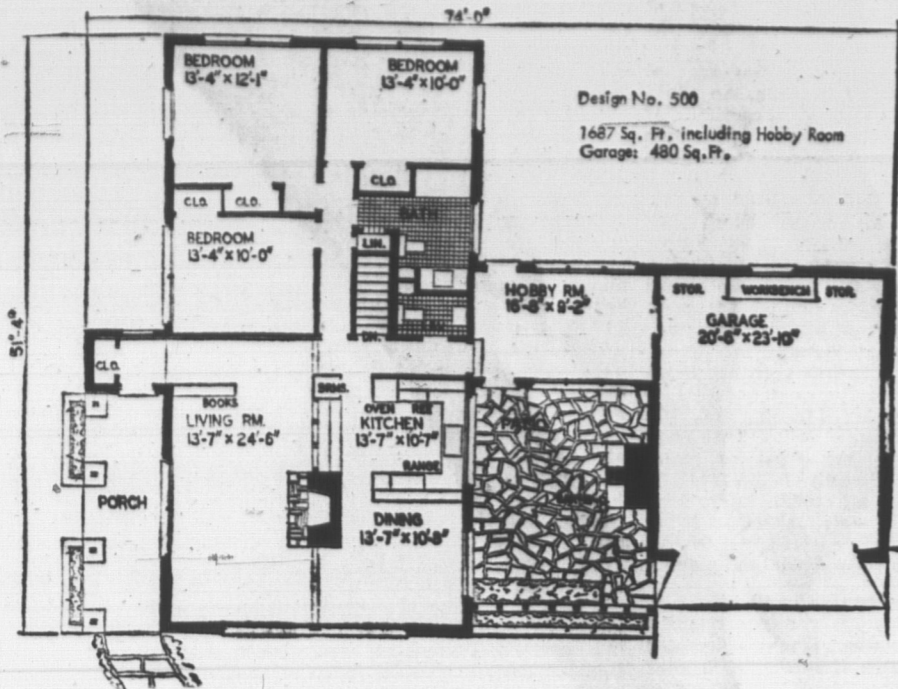
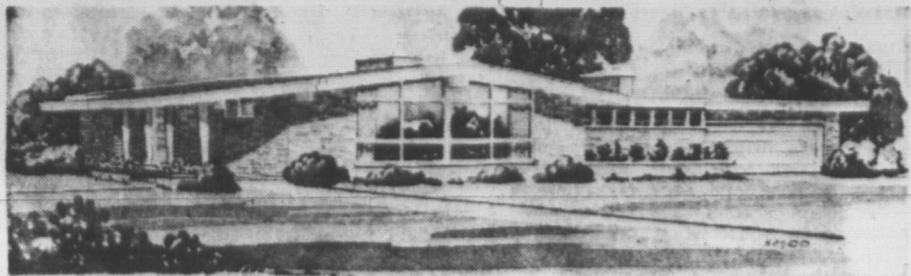


**GUARDIAN-PATRIOT HOME OF THE WEEK**



This modern design is truly a home for entertaining and outdoor living. It has a most interesting layout. The living area with its open planning makes this portion an attractive social centre, yet the kitchen is effectively closed off by the open fireplace and glass wall behind the counter. Traffic to all parts of the house is excellent, and extends through the hobby room to the garage, patio and outdoor barbecue.

All rooms are extra large making this a home to be proud of. Construction is brick and stone veneer. 1687 Sq. Ft.

**First Aid For Ailing Houses**

**RUST SPOTS ON LINOLEUM**  
 QUESTION: Do you have a remedy for a large rust spot on linoleum? My tenant set his rusty toolbox on new linoleum I tried lemon juice, but it didn't do the job. Please suggest something that won't take the finish off.  
 ANSWER: Only suggestion I can offer will work only if the rust hasn't penetrated deeply, and may remove some of the finish. Careful rubbing with fine steel wool and scratchless scouring powder. Then re wax the surface in area.  
**CANDLE WAX ON STONE**  
 QUESTION: The stone base in front of our fireplace is smooth finished. While the fireplace was burning and the stone near the fire was quite warm,

boards are birch, eight years old, and need refinishing. They seem to be getting dark. How can I lighten them? The first time they were finished we used a non-grain raising sealer then a few coats of a clear top quality satin-like finish.  
 ANSWER: All wood tends to darken and mellow with age. I suggest you remove the present finish down to bare wood. Perhaps most of the darkening is from the finish. If not, apply a prepared wood bleach, following label instructions carefully. Then refinish, as before.  
**REPLACING WOOD SILL**  
 QUESTION: A leaking downspout caused one of the wood window sills on our enclosed porch to rot. Is there any way we can repair this sill ourselves or must we have the whole frame replaced?  
 ANSWER: A special kit is now available at many building supplies, hardware and paint dealers, for just the purpose of repairing the window sill only, without the rest of the frame.

The kit contains a heavy-bodied pigmented material which dries to a pliable, flexible coating, and a glass fabric material, with special applicator, to be cut to size and applied over the old sill. Result is a smooth "new" sill which can be painted to match rest of frame.  
 For professional installation, some buildings supplies dealers carry prefabricated protective units fitting over several standard-size window sills. These are made of aluminum with baked enamel finish and give permanent protection. Have excellent appearance, too.  
**REMOVING ADHESIVE**  
 QUESTION: How can linoleum adhesive be removed from a wood kitchen floor? The old linoleum was taken up but quite a bit of the adhesive is left on the wood flooring underneath.  
 ANSWER: The simplest method would be to scrape the floor

with a floor sanding machine. If regular linoleum paste was used, it should be easily removed by scrubbing the floor with a hot, strong solution of washing soda, using a pound to the gallon of water. Allow the solution to work on the paste for about a half hour, then scrub with a stiff brush or scrape with a wide-blade putty knife. Waterproof paste can usually be softened with paint remover.

**H.R. DOANE AND COMPANY**  
 and  
**WINSPEAR, HIGGINS, STEVENSON & DOANE**  
**Chartered Accountants**  
 134 RICHMOND ST., CHARLOTTETOWN  
 Saint John, Halifax, St. John's, Montreal, Toronto, Winnipeg, Edmonton, Calgary, Prince Albert, Vancouver

**SELF-SERVICE**  
**Laundry & Drycleaning**  
 ● Economical  
 ● Easy and speedy  
 ● Visit our Car Wash also  
**S & M**  
 Eden St. Ch'town

**HOW TO OBTAIN DESIGN BOOK**

The latest design book entitled "Canadian Guide to Home Planning and Design" is now available at the offices of The Guardian and The Evening Patriot for \$1. tax free. This new edition includes color selection, etc., plus over 100 popular new designs to choose from. Also included are full designs on how to order blueprints.

**Best Sellers**  
 A GIFT OF JOY  
 by Helen Hayes — 5.95  
**"A THOUSAND DAYS"**  
 by Arthur M. Schlesinger Jr. — 5.95  
**HOW FAR TO BETHLEHEM**  
 by Norah Lofts — 5.95  
**THE CARD SHOP**  
 103 Grafton St. Dial 4-9974

**REAL ESTATE**  
**FOR SALE**  
 Attractive executive-type nine room house, Goodwill Avenue, consisting of livingroom, den with fireplace, library, dining room, powder room, modern kitchen, built-in dishwasher, eye-level oven, barbecue, four bedrooms, combined bath and laundry room. Dual-pane windows and screens, fully insulated, partly finished basement with garage. Lot 126' x 130'.  
**FOR RENT:**  
 House in Parkdale. Furnished or unfurnished, contains 3 bedrooms on second floor and one bedroom on first floor. Large living room, kitchen, dining room, and bathroom. Oil heated. Spacious back yard.  
**FOR SALE:**  
 92' x 120' residential lot on Johnston Street.

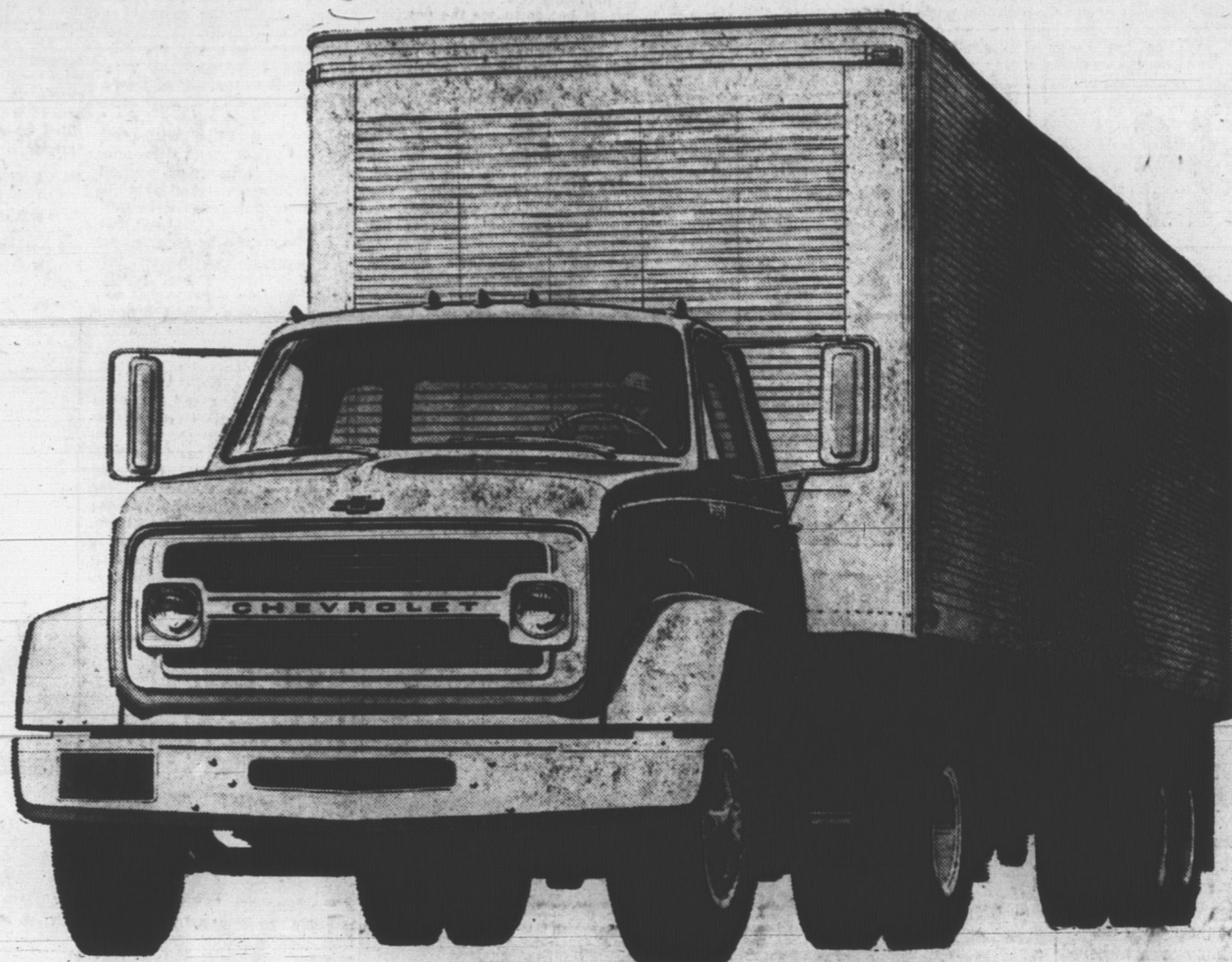
**Montreal Trust**  
 119 RICHMOND STREET CHARLOTTETOWN, P.E.I.  
 PHONE: 892-1215



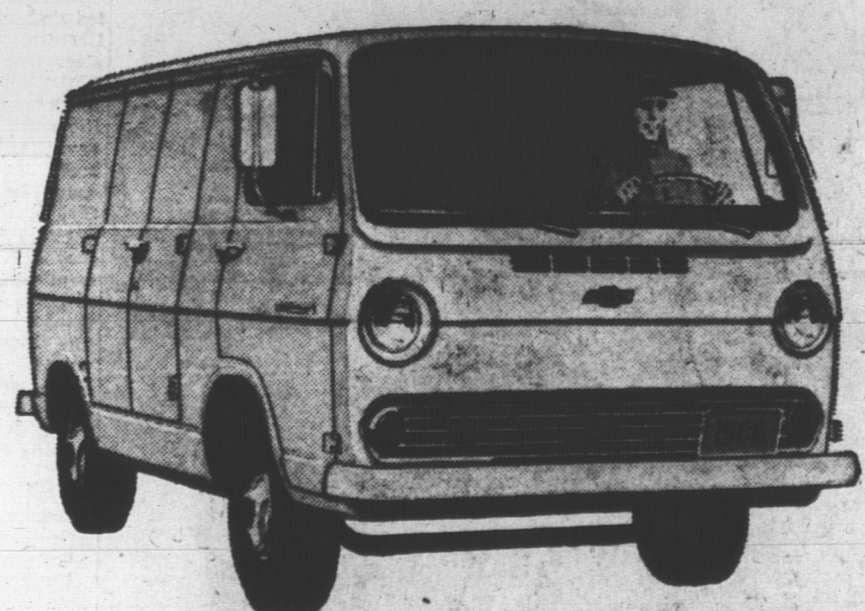
Roger Birt Mgr. Ellis Bros Save Easy presents the keys to Mrs. James McKay, 107 Gerald St., for Westinghouse Deep Freezer. The freezer was First Prize in our recent Clark Stow-Away Sale. You can always be a winner when you Shop Ellis Bros.

Photo by R. Hambly.

**The new long strong line of '66 Chevrolet Workpower trucks**



**If this truck's too big...**



**and this truck's too small...**

**We make 266 other models (and one is just right for you)**

How right? This right: a choice of 268 models, from the lightest Chevy-Vans and pickups to the new 70000 and 80000 Series gas and Diesel units with GCW's up to 65,000 lbs. As right as Chevrolet's 18 big engines for '66, including five new 4-cycle Diesels, two new 2-cycle Diesels and five new gas engines. As right as the big Chevy choice in transmissions; from 3-speeds to automatics to 16-speed Spicers.

Check the selection — there's the right truck for your requirements in Chevrolet's long strong line of Workpower Trucks for '66.

**Chevy's built for bigger things in '66.**

Phone your Chevrolet dealer about any type of truck you want. **CHEVROLET**

**AUTHORIZED CHEVROLET TRUCK DEALER IN CHARLOTTETOWN**  
**ISLAND CHEV. - OLDS. LTD.**  
 203 FITZROY STREET, CHARLOTTETOWN PHONE 894-9577  
 Be sure to see Bonanza over channel 13 at 10 o'clock Sunday night.