

**Soviet Union  
Icebreaker  
Draws Protest**

HALIFAX (CP) — A protest over the use of Russian icebreakers on the St. Lawrence River has been sent by the Port of Halifax Commission to J.W. Pickersgill, federal transport minister.

Ray March, executive secretary of the port commission said "It is not the normal thing for one country to break ice in the waters of another country. It's as if the Russians were telling us, 'You can't keep your own river open so we'll do it for you.'"

Russian authorities have ordered a Soviet icebreaker to accompany the Russian freighter Indirka, now believed nearing Montreal.

The telegram to Mr. Pickersgill said in part, "... If Canada desired the river open to navigation, Canadian icebreakers should attempt this and not foreign. We therefore request you to examine... the desirability of allowing Russian icebreakers to operate in Canadian territorial waters."

**Tracking Station  
Slated To Close**

CAPE KENNEDY, Fla. (AP) — The missile tracking station on San Salvador Island will be closed and employees will be dropped from the U.S. Air Force eastern test range payroll in an economy move.

The air force made the announcement here. Affected will be 170 employees of Pan American World Airways and 130 of Radio Corporation of America.

Only a small caretaker force will remain on the Bahamas Island, which is to be closed within a few months.

Pan American operates and maintains the range for the air force. RCA performs technical services under a subcontract with Pan Am.

Officials said the action was the result of careful reassignment of work loads and manpower needs.

**Immigrant Flow  
Up During 1964**

OTTAWA (CP) — Canada received 112,606 immigrants last year, biggest annual total since 1945, arrived in 1964, the immigration department has announced.

The figure was up 19,455 from 1963 but still well down from the post-war peak of 252,164 set in 1957.

Immigration Minister Tremblay said that 59 per cent of immigrants who entered the labor force were in the more skilled categories.

Newcomers from Britain made up the largest group again in 1964 at 30,279, compared with 24,903 the previous year.

**World Weather  
Centre Opened**

UNITED NATIONS (AP) — Operation of the first of three world weather centres is well under way, the United Nations reported here. Establishment of the second centre has begun.

The first centre, part of a projected global observation and analysis system called World Weather Watch, began functioning at the start of the year in Washington.

The second centre will be in Moscow. The third will be in Melbourne, Australia.

Several regional centres also will be set up. High-speed electronic computers will be used to prepare weather analysis and forecasts.

**Gov't Ready  
To Aid Games**

WINNIPEG (CP) — Federal Health Minister Judy LaMarsh announced the federal government is prepared to contribute up to \$1,000,000 towards costs of staging the Pan-American Games here in 1967.

Projected deficit for the centennial - year sports event is \$3,077,813.

Miss LaMarsh made the announcement following a three-hour meeting with representatives of the Manitoba government and the city of Winnipeg.

She told reporters she was authorized by the government to make an offer of "more than twice the original amount offered by the previous administration."

**Oceanographic  
Director Named**

OTTAWA (CP) — Dr. Lloyd M. Dickie, 38, of St. Andrews, N.B., has been appointed director of the Atlantic oceanographic group investigations of the Fisheries Research Board of Canada, it was announced here.

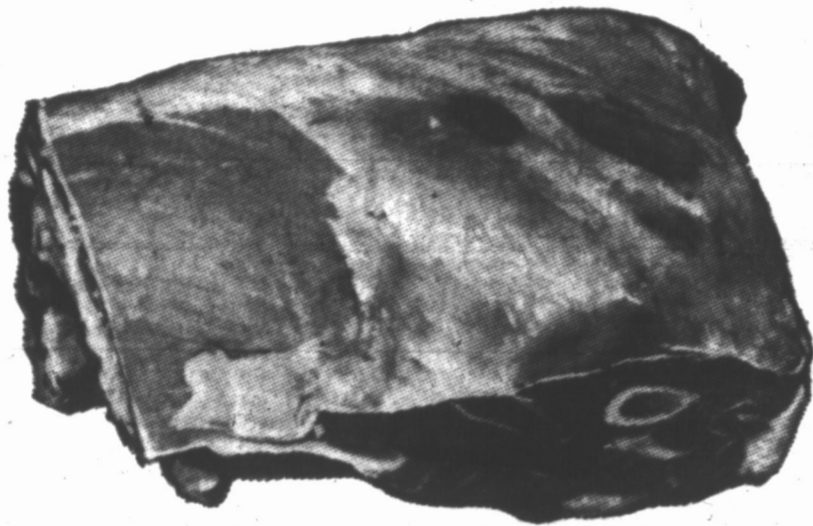
He will assume his new duties at the Bedford Institute of Oceanography, Dartmouth, N.S. July 1. Mr. Dickie has been associated with the board's biological station at St. Andrews since 1945.

FBI DISPLAY

Children are handed targets riddled by bullets after daily displays by Federal Bureau of Investigation agents at Washington.

# GREAT BUYS

ON ALL YOUR FOOD NEEDS



FRONTS OF LAMB

**LAMB** Lb. **29**

**TURKEY** GRADE A BROILERS OVEN READY 6 to 10 lbs. **49**



MAPLE LEAF  
**BOLOGNA**  
SLICED BY THE PIECE  
lb. **33<sup>c</sup>** | lb. **29<sup>c</sup>**

JOHNSON'S  
**POTTED MEAT**  
TUB **39<sup>c</sup>**

SWEET PICKLED  
**NECK RIBS**  
3 lbs. for **39<sup>c</sup>**

... Where friendly people  
**SAVE you MORE**

HALIBUT — FRESH FROZEN  
**STEAK** lb. **65<sup>c</sup>**

GIANT SIZE  
**CHEER**  
2 lb. 10 oz. **79<sup>c</sup>**

INSTANT  
**NESCAFE**  
6 oz. jar  
**1.09**

CAMAY  
**SOAP**  
4 REG. Bars **49<sup>c</sup>**

BRIGHT'S  
**TOMATO JUICE**  
48 OZ. TIN **37<sup>c</sup>**

MIX-O  
**BLEACH** 2 32 oz. btl. **49<sup>c</sup>**

SILVER SEAL EXTRA FANCY  
**MOLASSES** 2 qts. for **89<sup>c</sup>**

ROSE  
**S'berry JAM** 24 oz. jar **57<sup>c</sup>**

AYLMER FANCY  
**PEAS** 4 15 oz. tins **69<sup>c</sup>**

RAGGEDY ANN  
**PEACHES** 2 20 oz. tins **49<sup>c</sup>**

FUSS IN BOOTS  
**CAT FOOD** 2 15 oz. tins **33<sup>c</sup>**

LOWNEY'S PEANUT  
**BRITTLE** Large cello bag **39<sup>c</sup>**

HEINZ—24 OZ.  
**SANDWICH SPREAD** **55<sup>c</sup>**



KOLD PAK  
**Strawberries** TUB **39<sup>c</sup>**

HIGHLINER  
**Fish Cakes** 12 oz. **31<sup>c</sup>**

ZERO PAK  
**Peas** 2 12 oz. for **39<sup>c</sup>**

EASIFIRST

**SHORTENING** 3 1 LB. PKGS. FOR **85<sup>c</sup>**

MARVEN'S  
PEERLESS  
MIX

**COOKIES**  
Box of 100 **89<sup>c</sup>**

COUNTRY GOOD  
**CORN FLAKES**  
12 OZ. PKG. **31<sup>c</sup>**

TWINKLE  
**CAKE MIX**  
2 pkgs. for **49<sup>c</sup>**

SUN SPUN

**SALAD DRESSING** 16 oz. Jar **37<sup>c</sup>**

Garden Fresh  
**PRODUCE**

HY GRADE  
**Tomatoes** 2 12 OZ. PKG. **45<sup>c</sup>**

CALIFORNIA  
**LETTUCE** 2 LARGE HEADS FOR **43<sup>c</sup>**

FLORIDA  
**CELERY** 2 SIZE 3 FOR **39<sup>c</sup>**

WHY  
WAIT  
FOR  
SPRING



Sale Dates  
Feb. 4, 5, 6

