

# STOCK QUOTATIONS

## Morning Stock Letter

(Received over Pittfield and Co's Private Wire)

**MONTREAL, June 9—Clercy—**Annual report shows total expenditure from Jan. 1, 1935 to May 31, 1936 of \$40,458 with credits \$1,136 net expenditure \$39,122. Current assets \$6,281. No current liabilities. Work during period was confined to three properties developed August 1, 1935. Assessment work done on Clercy township property under agreement with Arno Company. Company drilled eight holes with results leading to conclusion in general striking similarity to McWaters deposit now proceeding to prove or make possibilities. These deposits will sink shaft and provide at least a thousand feet cross cut-

ting and drifting.

**TORONTO, June 9—Roche Long** Lac—Option on 100,000 was cancelled sometime ago by the company. Option was at 25 cents a share it was officially stated company is financed and better prices could be got later on if funds are needed.

Kirkland Hudson—From sources close to the company, it was learned that Kirkland Hudson is negotiating for control of the Rowan Hill Gold Mines property in the Red Lake area, on which it is stated that an important discovery was made recently. Rowan Gold Mines adjoins Red Crest Gold which have recently been obtaining some high grade values.

## N. Y. Stock Exchange

(Supplied by Pittfield and Co. Members of Montreal stock exchange and Curb Market)

Stocks	Open	Last
Alc Red	65 1/2	65 1/2
Al Chem	198 1/2	198 1/2
Am Can	128 1/2	128 1/2
Am For Pd	7 1/2	7 1/2
Am Loco	27 1/2	27 1/2
Am Rad	20 1/2	20 1/2
Am Tel Tel	107 3/4	107 3/4
Am Tob	22 1/2	22 1/2
Am Water	33 1/2	33 1/2
Anaconda	33 1/2	33 1/2
Atchison	70 1/2	70 1/2
Auburn	27 1/2	27 1/2
Bald Loco	27 1/2	27 1/2
Bell Ohio	18 1/2	18 1/2
Bendls Av	18 1/2	18 1/2
Beth St	61 1/2	61 1/2
Briggs Man	40 1/2	40 1/2
Can Pac Ry	12 1/2	12 1/2
Case	101 1/2	102 1/2
Ches Ohio	93 1/2	95
Clercy	70 1/2	70 1/2
Com So	3 1/2	3 1/2
Com Gas Co	33 1/2	34 1/2
Cora Pro	78 1/2	78 1/2
Cur Wright	6 1/2	6 1/2
Deere	144 1/2	144 1/2
DuPont	10 1/2	10 1/2
Elec Pr Lite	27 1/2	27 1/2
Pfizer	27 1/2	27 1/2
Gen Elec	38 1/2	38 1/2
Gen Foods	40 1/2	40 1/2
Gen Int	61 1/2	61 1/2
Goodrich Tire	25 1/2	25 1/2
Goodrich	14 1/2	14 1/2
Hud Mot Car	15 1/2	15 1/2
Hupp Mot Car	15 1/2	15 1/2
Int Tel Tel	44 1/2	44 1/2
Johns Man Co	93 1/2	93 1/2
Kennecott	38 1/2	38 1/2
Mont Ward	44 1/2	44 1/2
Mur Co	10 1/2	10 1/2
Nat Cash Reg	24 1/2	24 1/2
New York N H	34 1/2	34 1/2
Nor Am Co	20 1/2	20 1/2
Nor Pac	20 1/2	20 1/2
Pen R R	30 1/2	30 1/2
Pub Ser Co	44 1/2	44 1/2
Pure Oil Co	10 1/2	10 1/2
Radio Co	12 1/2	12 1/2
Radio Recth Orph	32 1/2	32 1/2
Sears Roe Co	71 1/2	71 1/2
Shell Union Oil	10 1/2	10 1/2
South Pac	32 1/2	32 1/2
Std Oil Ind	58 1/2	58 1/2
Std Oil N J	11 1/2	11 1/2
Standardizer Co	31 1/2	31 1/2
Texas Co	23 1/2	23 1/2
United Alp	4 1/2	4 1/2
United Gas Imp	15 1/2	15 1/2
U S Rub	28 1/2	28 1/2
U S St Co	61 1/2	62 1/2
Vanadium	19 1/2	19 1/2
Warner Bros	10 1/2	10 1/2
West Union	80 1/2	81 1/2
West Air Brake	30 1/2	30 1/2
West Elec	112 1/2	114
Woolworth	50 1/2	50 1/2

## YESTERDAY'S LOCAL MARKET QUOTATIONS

Corrected For Every Wednesday & Saturday's Issue.

### RETAIL MARKET

Celery bunch	20c
Onions lb	8c
Carrots lb	12-14c
Veal lb	12-14c
Hubbard lb	5c
Potatoes pk	35c
Potatoes bus	\$1.00
Spinach lb	18c
Fresh radish bunch	10c
Parsley head	8c
Turnips lb	2c
Cabbage head	15-20c
Steak lb	15-20c
Roast beef	14-16c
Stew meats	10-12c
Pork chops	16-18c
Pork Roast	30c
Lamb Chops lb	25-30c
Pow	90-120c
Butter	25-27c
Mutton lb	15-17c
Cream	18-20c
Eggs doz	18-20c
1/2 doz 4 to 6 weeks old pair	\$7.50-\$9.00

### FISH

Cod fresh lb	5c
Loobsters	30c
Crabs lb	10c
Mackerel 2 for	25c
Salmon	25c

### PRODUCE

Hay cwt	65-70c
Potatoes bus	\$1.30
Turnips bus	8c

## MINING

(Canadian Press)

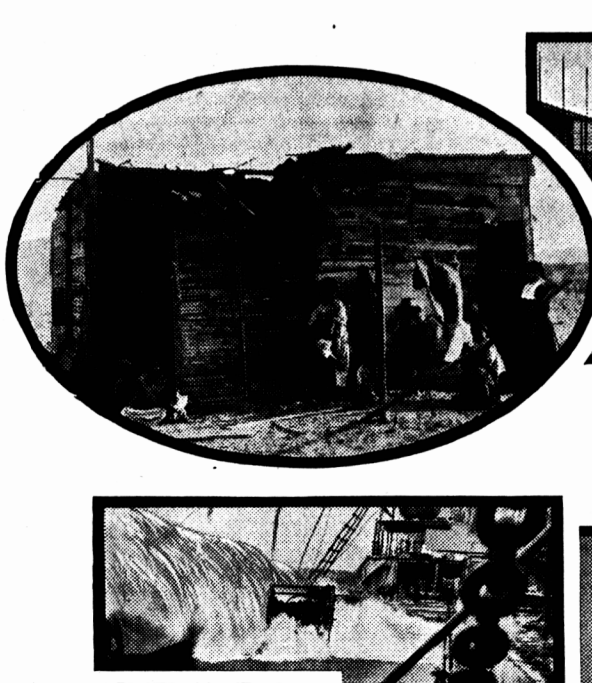
**TORONTO, June 9—Gold shares** raised the average again today in the Toronto mining share market, recording 143.49 at the close, up 1-2 points from Monday.

Volume was sizeable at 2,214,000 shares.

Central Patricia advanced to 395 and Macassa to 490. The latter dropped back to 470 under profit taking but both held 10-cent gains at the close. Read-Author touched 275 in heavy turnover and closed at 2.65 for a net gain of 5 cents. McKenzie moved up to a new high at 1.68 and held a gain of 17 cents at 1.85. Little Long Lac added 20 cents, Perron 17, O'Brien 9, Pioneer 10 and issues up 4 to 8 cents included Sylvanite, Ventures, Siscoe, Sullivan Toburn Red Lake, Farnour McLeod-Cockshut, Chibougamau, McWatters, Canadian Malart, Buffalo-Ankerite and Bralorne Argosy added 10 cents.

**TORONTO, June 9—**

Stocks	Close
Atton	7 1/2
Alex	3 1/2
Alcoma	10
Anglo H	150
Argosy	370
Arnfield	10
Ashby	10
Astora	10 1/2
Bagamac	10 1/2
Barry H	7 1/2
Base Metal	17 1/2
Bear	4 1/2
Bentley	12 1/2
Biz Min	61
Bojo	18 1/2
Bralorne	81 1/2
B R X	13 1/2
Buff Ank	8 1/2
Buff Ank	8 1/2
Bunk Hill	13 1/2
Can Mat	108
Cariboo	156
Castl	390
Can Pat	8
Clercy	218
Constar	35
Cons Cht	16
Dome	59
Dom Ex	6 1/2
Eliodoro	10 1/2
Falcon	700
Fed Kirk	7 1/2
Franklin	10 1/2
Gold Lake	30
Gold Lake	30
Gold Belt	40
Goodrich	28
Graham	17
Granada	39
Gwynne	60
Gunnar	102
Halcyon	7 1/2
Hard Rock	23 1/2
Harker	16
Hollinger	10 1/2
Homesstead	70
Honey	21
J M Cons	61
Jerr Lake	30
Kir Had	110
Kir Lake	77
Lake Sh	60 1/2
Lam Cont	13 1/2
Lava Cop	125
Lepel Oro	23 1/2
Low Gold	5
Little L L	60 1/2
Macl Co	395
Macassa	470
Man East	22
Maple L	10 1/2
McKenzie	18 1/2
McMillan	4 1/2
McWatters	148
Min Corp	122
Minto	73
Monita	28
Morris K	59
Murphy	3 1/2
Newbee	34
Ning Had	240
Noranda	58
Nor Can	59
O'Brien	257



THEN THE PHOTOGRAPHER RAN—This picture of a great wave coming aboard an Imperial Oil tankship on the Atlantic Ocean was snapped by one of the crew whose next act was to "snap out of it" into the shelter of a deckhouse.

**HE CAN'T GO WRONG...** Clear, reliable road maps and courteous, helpful road and tourist information are only two of the extra services gladly given at Imperial Oil stations. ... With Imperial touring information and Imperial gasolines and motor oils, you just can't go wrong. Drop a line to Imperial Touring Service, 92 King St. East, Toronto, for free road maps marked with the best route for that motor trip you are planning.



**A HOUSING PROBLEM SOLVED...** Before Imperial Oil interests developed the oil fields of Peru there were homes there such as that on the left. Foremost in the development, which involved expenditures of great sums of money put up by thousands of investors, was a program to house the native workers. Its result was that rows of neat dwellings like those above sprang up on the desert near the oil fields.

## LIVESTOCK

(Canadian Press)

**MONTREAL, June 9—Prices** held steady on all divisions of Montreal livestock markets in early settlement today. Receipts, cattle 9; calf, 135; hog 347; sheep and lamb 139.

Cattle offered were common to fair quality cows and bulls. Veals and calves of fair to medium good and good quality ranging from \$5 to \$6.50. With a few better calves up to \$7. Common thin light drinkers went at \$4. Spring lambs were \$10 to \$11 per hundredweight. Sheep were from \$5 to \$4.25.

Beacons brought \$9 to \$9.25 fed and watered. Selects drew \$1 per hog premium. Butchers, heavies and lights were \$8.50 to \$8.75 and extra heavies \$8 to \$8.25. Feeders sold up to \$12 per hundredweight with some from \$6 to \$7.

## Miscellaneous

(Canadian Press)

**MONTREAL, June 9—Butter** prices eased a little in lighter trading on Canadian commodity exchange produce section today. Other lines held steady and unchanged.

Butter Spot: Sales: 200 boxes June 23 1-4; 200 boxes Q3e June 23; 200 June 22 7-8; 300 boxes Q4e May 23.

Cheese Spot: Ont white and colored 13 1-8 to 13 5-8. Eggs spots in cartons: Ont A large 23 to 23 1-2; A medium 21 1-4 to 21 1-2; C 20 to 20 1-2.

## MT'L. CURB

(Supplied by Pittfield and Company members of Montreal stock exchange and curb market)

Stocks	Open	Last
B A Oil	23 1/2	23 1/2
Dom Stores	21 1/2	21 1/2
For A	21 1/2	21 1/2
Imp Oil	21 1/2	21 1/2
Int Pot	20 1/2	20 1/2
Meyers	9	9
Walker Good	28 1/2	28 1/2

## Advertising Rates—Payable in Advance

Central Guardian locals, 4c per word; Western and Eastern locals, 2c per word; Announcements and Coming Events, 1c per word; Classified 1c per word; In Memoriam Notices, 70c per inch; Lists of Floral and Spiritual Offerings, Cards, etc., 4c per name; Letters of Condolence 70c per inch; Notices of Thanks and Appreciation, 70c per inch or 4c per Minimum Charge for any advertisement twenty-five cents.

## For Sale

**FOR SALE—BARRED ROCK** chickens, 4 weeks old. Everett Howatt, Carleton, L-5363-6-8-61.

**FOR SALE—1 GUERNSEY COW,** freshened. Ronald McInnis, Southport, L-5375.

**FOR SALE—EASY ELECTRIC** Washer, Modern "Vacuum Cup" type, good as new, bargain price. Apply Box V-491, N-185-6-9-31.

**FOR SALE—PURE BRED JERSEY** cow to freshen June 8th. Howard Schurman, Central Bedouque, L-4782-6-9-31.

**FOR SALE—HEINTZMAN & CO.** Piano, also Electric Radio. Will sell either or both at low price. Terms if desired. Write Box W-491, N-185-6-9-31.

**FOR SALE—ELECTRIC REFRIGERATOR** (Can. General Electric) like new with factory guarantee. Bargain for quick sale. Term payments can be arranged. Apply Box U-491, N-185-6-9-31.

## Female Help Wanted

**WANTED—AN EXPERIENCED** country girl wants housework. Apply X care of Guardian, L-5372.

**GENERAL MAID WANTED TO** work at summer cottage. Plain cook—Good wages. Apply "B," Guardian, L-4831-6-10-12-13.

**Wanted**

**RESPONSIBLE YOUNG MAN** wants bright well furnished room with good board in congenial home. Reasonable. Give particulars P. O. Box 220, L-4798-4-10-14.

## Markets At A Glance

(Canadian Press)

**Toronto and Montreal—Industrial** stocks higher.

**Toronto Mines—Higher.**

**New York—Stocks** closed higher.

**Winnipeg—Wheat** up 1-2 to 1-4 cent.

**New York—Cotton** and sugar higher.

## Currencies

(Canadian Press)

**MONTREAL, June 9—The** pound sterling recovered a little on Montreal foreign exchange today, gaining .01 1-4 to 5.02 11-16. The United States dollar was 1-16 higher at 1-4 premium while the French franc lost all Monday's advance to close at 6.60 down .03 of a cent.

**NEW YORK, June 9—Pounds** sterling strengthened today on the foreign exchange market. French gold francs declined and Canadian dollars were fairly steady in terms of United States funds.

Domination funds gained 1-16 per cent to 99 3-4 cents while pounds sterling improved 1 5-8 cents at \$5.01 1-2 but French gold francs dropped 1 1-4 points to 6.58 3-8 cents.

## EXCHANGE

(Canadian Press)

**MONTREAL, June 9—British** and foreign exchange in relation to the Canadian dollar as compiled by the Royal Bank of Canada closed today as follows:—

Argentine peso 3793.

Australia pound 4.0146.

Austria schilling 1886.

Belgium belga 1696.

Bulgaria lev 0138.

Czechoslovakia crown 0415.

Denmark krone 2248.

France franc 0680.

Germany reichsmark 4038.

Great Britain pound 5.0269.

Holland florin 6777.

Hungary pengo 1996.

India rupee 3803.

Japan yen 2955.

Jugoslavia dinar 0230.

New Zealand pound 4.0551.

Norway krone 2529.

Poland zloty 1891.

South Africa pound 5.0029.

Spain peseta 1369.

Sweden krone 2594.

Switzerland franc 3242.

United States dollar 1-4 per cent premium.

Closing exchange rates:—

At Montreal—Pound 5.02 11-16; U. S. dollar 1.00 1-4; franc 6.60.

At New York—Pound 5.01 1-2; Canadian dollar 99 3-4; franc 6.58 3-8.

At Paris—Pound 76.17 fr; U. S. dollar 15.19 fr; Canadian dollar 15.16 fr.

In gold—Pound 12s, 2d; U. S. dollar 59.48 cents; Canadian dollar 59.24 cents.

**NEW YORK, June 9—Foreign** exchange irregular. Great Britain demand high 5.01 1-2; low 5.01 1-8; close 5.01 1-2; 60 day bills 5.00 1-2; France 6.58 3-8; Italy 7.87; Belgium 16.91; Germany 40.25; Canada 9 3-4.

## For Sale

**WANTED—FARM WORK BY** experienced man. Apply Guardian, L-5368-6-8-31.

**THE SUN LIFE HAS A NEW LOW** premium policy which guarantees even in the event of your death the completion of your things you had planned to do. Consult J. A. Moore, Currie Building, Charlottetown.

**To Let**

**ROOMS, WITH OR WITHOUT** board. Rates reasonable. 214 Queen St. L-5385.

**TO LET—ONE FLAT, ALSO ONE** furnished room. Apply 139 Kent Street, L-4814-6-9-31.

**TO LET—IN BRIGHTON DIS-**trict—furnished house. Phone 847-J. L-4800-5-9-31.

**TO LET—FIVE ROOM TENE-**ment on Alley Street. Phone 784. L-4822.

**HOUSE TO LET—257 RICHMOND** St. Apply 86 Weymouth St. or telephone 1003. L-5254.

**Agents Wanted**

**ACTIVE AGENTS BOTH SEXES** for fast selling Canadian Publications, liberal commission. Preference given those with experience. Give full details when writing to Homcraft Publications Ltd., Unity Building, Montreal, P. Q. N-173-6-8-41.

**APPRENTICE WANTED TO** learn Barber Trade. Short Course expert training. Molar Barber College, L-384.

## GORDON FIFE, Soldier of Fortune



## New York Curb

(Supplied by Pittfield and Company members of Montreal stock exchange and Curb Market)

Stocks	Open	Last
Amer Gas Elec		
Atlas Co	4 1/2	4 1/2
Can Serv	19 1/2	20 1/2
Elec Bond A	9 1/2	9 1/2
Ford	9 1/2	9 1/2
Low Gold		
Niag Ind	9 1/2	9 1/2

## Most Protests



## Mt'l. Stock Exchange

(Supplied by Pittfield and Company members of Montreal stock exchange and curb market)

Stocks	Open	Last
Abitibi	137 1/2	14
Bathurst	148 1/2	149 1/2
Bell Tel	12 1/2	12 1/2
Brazilian	2 1/2	2 1/2
Brow Co Can	20 1/2	20 1/2
B C Pow A	6 1/2	6 1/2
Can Car Found	6 1/2	6 1/2
Can Cement	6 1/2	6 1/2
Can Ind Al	7 1/2	12 1/2
Can Pac	27 1/2	28
Celanese	6 1/2	6 1/2
Cook Plow	6 1/2	6 1/2
Cons Smelt	66	66
Dist Soap	22 1/2	22 1/2
Dom Bridge	87 1/2	87 1/2
Dom Steel	4 1/2	4 1/2
Dom Tex	65	65
Emp Tel	14	14
Int Nickel	40 1/2	47
Massey Haa	5	5
Metall Front	15	15 1/2
Mont Pow	32	32
Nat Brew	44 1/2	44 1/2
Pat Corp	15 1/2	15 1/2
Shawinigan	20 1/2	19 1/2
St of Can	62 1/2	62 1/2

## PRODUCE

(Canadian Press)

**MONTREAL, June 9—Prices** remained firm on all lines on Montreal open produce markets today except butter which eased a little in lighter trading.

Butter was quoted at 23 cents a pound for cartons or less of no 1 while lots to retailers were 24 cents for prints and 23 1-2 for solids.

Cheese was quoted at 13 to 13 1-2 cents a pound for Ontario white and colored.

Graded egg shipments were quoted at 27 cents a dozen for A-large; 24 for A medium; 23 for B and 22 for C.

Potatoes: P E I mts 90's \$2.90 to \$3; 50's \$1.70; 10's 36; cobbler 90's \$2.80 to \$2.90; N. B. mts 80's \$2.65 to \$2.75; 50's \$1.70; 10's 36; new potatoes: S. C. bbls no 2 \$9.25 to \$9.50; N. C. bbls no 2 \$9.25 to \$9.50.

## RAILWAY EARNINGS

(Canadian Press)

**MONTREAL, Que., June 9—The** gross revenues of all the inclusive Canadian National Railways system for the week ending June 7th 1936 were \$3,384,151 as compared with \$2,941,943 for the corresponding period of 1935, an increase of \$442,208.

## Stocks Push Forward On Mt'l. Market