

Members of the Bench and Bar



HON. J. A. MATHIESON

Chief Justice of the Supreme Court, Charlottetown, P. E. I. Born Brackley Point, Harrington, P. E. I. Educated Harington Grammar School; Prince of Wales College; taught school 1882-89; called to the Bar of P. E. I. 1893; created K. C. 1905; elected to Legislature 1900; re-elected 1904-08-12-15. Leader of Opposition 1903; became Premier and Attorney General 1911 to 1917; appointed Chief Justice June 13, 1917. Conservative; religion, Presbyterian.



JUSTICE A. C. SAUNDERS

Judge of the Supreme Court of P. E. I., Charlottetown. First elected to the Legislature in 1919; re-elected, 1923-27; sworn in as President of the Council and Attorney and Advocate General August 12, 1927, following defeat of Stewart Ministry, when he was called upon to form a Cabinet. Resigned on appointment as Judge of the Supreme Court of P. E. I. May 20, 1930. Liberal; Residence, Summerside, P. E. I.



JUSTICE A. E. ARSENAULT

Born at Egmont Bay, 28th July, 1870. His father was the late Senator Arsenault whose ancestor settled at Malpeque, P. E. I., in 1728. Educated at St. Dunstan's College, Charlottetown, and at St. Joseph's College, N. B. Studied law in Charlottetown and in London, England, and was admitted to the bar in 1899. Was first elected to the Provincial Legislature in 1908. Member of the Mathieson Government, 1911 to 1917. Premier and Attorney General, 1917-1919. Leader of the Opposition, 1919-1921. Appointed to Supreme Court Bench May, 1921. Holds degree of M.A. from St. Joseph's University and LL.D. from Laval University. Has for some years devoted some of his spare time to the promotion of the Tourist Business. Was first president of the Canadian Association of Tourist and Convention Bureaus and has since been one of its Directors. Director of the Good Roads Association, the Canadian Bar Association and of the Canadian Geographical Journal.

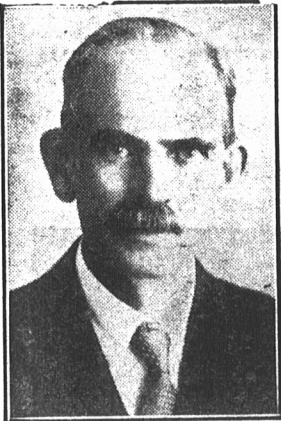


WALTER E. DARBY, B. A., LL. B.

Barrister, Summerside; born at Abrams Village, P. E. I., 1903; graduate of Prince of Wales College and Dalhousie University with degrees of Bachelor of Arts and Bachelor of Laws. Member of the Bar of Prince Edward Island and Nova Scotia; member of the Council of the Canadian Bar Society. Supt. Magistrate for Prince County. Religion, Church of England.



DOMINION OF CANADA



DONALD MCKINNON

Born at Brooklyn, King's County July 27, 1872. His parents Laughlin McKinnon and Mary McDonnald were emigrants from Skye, Scotland in 1858. Attended Brooklyn School, Unga High School and Prince of Wales College for three years. Taught for three years in Brooklyn School and was Principal of Montague School for three years. Studied law with the firm of M. & D. C. McLeod. After admission as Attorney became associated with Mr. A. A. McLean, K.C. under present firm name of McLean & McKinnon. Was appointed K.C. in Sept. 1923 and District Judge in Admiralty in August 1935. Since Mr. A. A. McLean's appointment as Controller of Royal Canadian Mounted Police the firm business has been continued in the Royal Bank Building, Charlottetown. Mr. McKinnon is a Conservative in politics having twice unsuccessfully contested the District of Queens for the House of Commons, first with Mr. J. H. Myers and subsequently with the late J. A. Messervy. Religion, Presbyterian.



SYLVERE DESROCHES

Was born at Miscouche, Prince Edward Island, Oct. 22, 1894. He was educated in Miscouche Public School, Prince of Wales College, and St. Dunstan's University, receiving his B.A. degree at Laval. Taught school for four years and subsequently was made Inspector of Acadian Schools in the Province. Entered upon the study of law with the late Gilbert Gaudet in 1924 and was admitted to the Bar in 1928. He was an unsuccessful Liberal candidate in the provincial election of 1931 in the Third District of Prince. Mr. Desroches served overseas with the 85th Bn. Since demobilization has been interested in military affairs and holds the appointment of Major in the P. E. I. Highlanders. He has been seconded to the 18th Infantry Brigade as Brigade Major for staff duties. A member of the Knights of Columbus, the Canadian Legion, the Army and Navy Club. He is married and has one son.



R. R. BELL

Born at Charlottetown; educated Prince of Wales College; studied law in Charlottetown under the late Judge Inman; associated with the law firm of Bell & Mathieson since 1928; secretary of the Provincial Conservative Party for the past ten years. Religion, United Church of Canada.



H. FRANCIS MACPHEE, B.A., K.C., Barrister, Charlottetown.

Born December 6th, 1895—Parents Capt. Hugh MacPhee and Ellen McKenna, Georgetown, P. E. I. Educated Public School, Prince of Wales College and St. Dunstan's College. B. A. from Laval. Served C. E. F. France 1915-1919. C. A. M. C. and Artillery. After War, studied Law. Admitted to the Bar in 1922. Since practiced in Charlottetown. Elected to Provincial Legislature in By-election 1929 as Minister of Public Works, Stewart Government (Conservative). Member of Stewart-McMillan Government 1931-1935. Attorney-General. Re-elected as Opposition Member in 1939.



W. HENRY NOONAN

Born at Bedouque, Prince Edward Island, August 12th, 1898, son of Mr. and Mrs. William A. Noonan. Early education at Bedouque Public School and Prince of Wales College. Served with Canadian Expeditionary Force during Great War. In 1920 became articled as Student-at-law with Hon. A. E. Arsenault, K. C. now Mr. Justice Arsenault. Admitted as Attorney and Barrister of the Supreme Court of Prince Edward Island in 1925. Practising Barrister in office of McQuarrie & Arsenault, Summerside, 1926 to 1931. Since then in private practice as Barrister & Solicitor at Summerside. Assistant Crown Prosecutor, Prince County, 1931 to 1935.