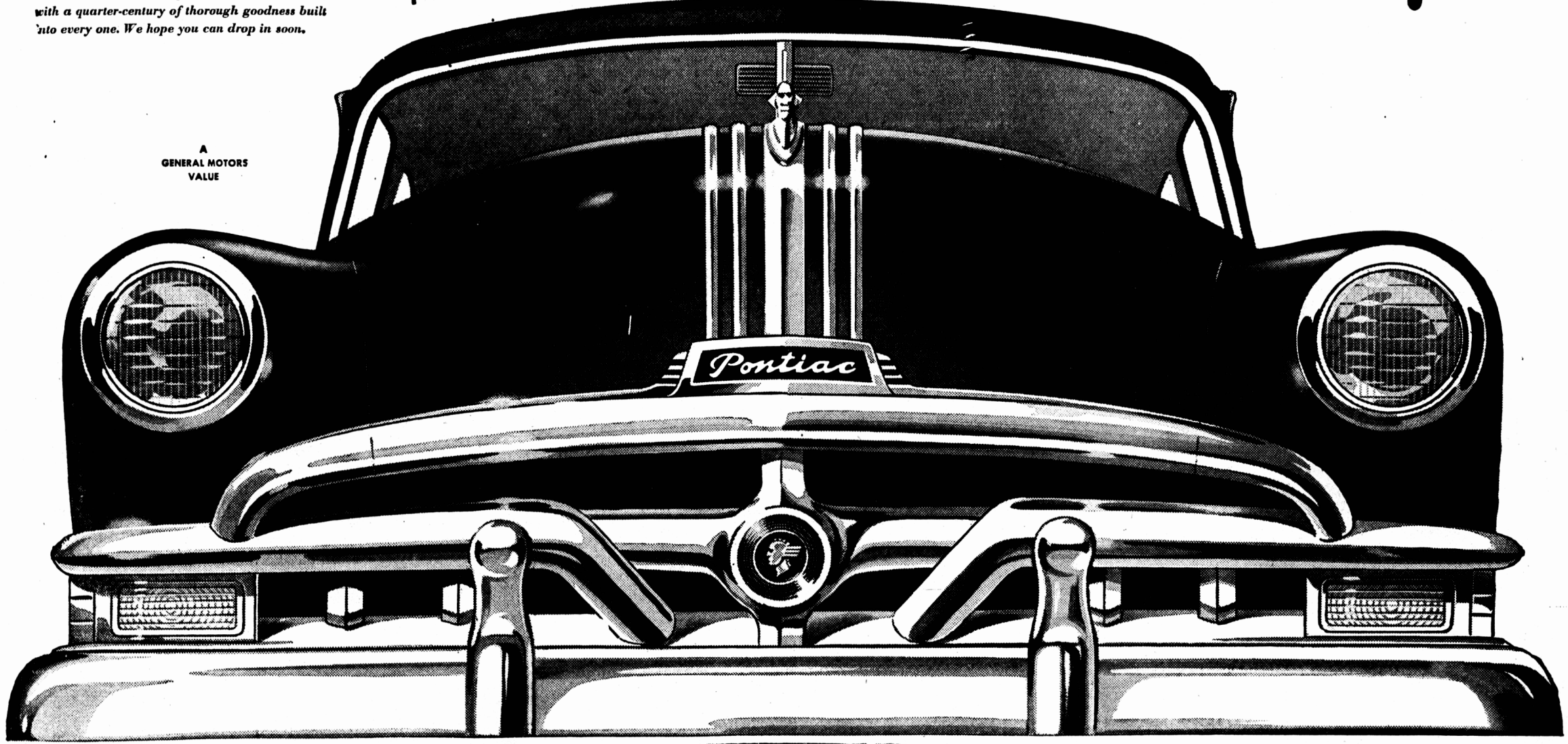




This is the happiest invitation we have ever extended—an invitation to you to come in and see the finest, most beautiful, most desirable Pontiacs ever built—the wonderful new 1951 Silver Anniversary models. These are Pontiac masterpieces, new inside and out, with a quarter-century of thorough goodness built into every one. We hope you can drop in soon.

Announcing the New Silver Anniversary Pontiac

WITH SENSATIONAL AUTOMATIC TRANSMISSIONS 



A
GENERAL MOTORS
VALUE

New and Beautiful Proof that **Dollar for Dollar**
and **Feature for Feature you can't beat a Pontiac!**

**GM
POWER *Glide***

SENSATIONAL NEW AUTOMATIC TRANSMISSION AVAILABLE ON FLEETLEADER DELUXE MODELS
New automatic driving comes to the low-price field! In all 1951 Pontiac Fleetleader Deluxe models you can have the wonderful ease and smoothness of POWERGLIDE—a proved, completely automatic transmission. In your POWERGLIDE Pontiac you can drive all day, touching nothing but steering wheel, brake and accelerator! There is no clutch pedal. And POWERGLIDE's easy on your car as well as on you! In normal driving no gears ever shift, for POWERGLIDE is a torque converter drive. Wear is reduced, efficiency increased. Your car's life is longer its trade-in value higher!
POWERGLIDE is optional equipment at extra cost on Fleetleader Deluxe models.

- THE MOST BEAUTIFUL THING ON WHEELS . . .** with distinctive new Gull-Wing Styling!
- TWO SENSATIONAL AUTOMATIC DRIVES . . .** POWERGLIDE on Fleetleader Deluxe, HYDRA-MATIC Drive on Chieftain and Streamliner.
- SILVER STREAK PERFORMANCE . . .** two engines, powerful straight eight or dependable, economical six.
- LUXURIOUS NEW INTERIORS . . .** beautiful new fabrics, new color harmonies, comfortable deep-rest seats.
- NEW, IMPRESSIVE SWEEPSTREAM FENDER TREATMENT . . .** protected by massive wraparound bumpers.
- SWEEPVIEW VISION . . .** wide windows, extra broad curved windshield, slim corner posts.
- BODIES BY FISHER . . .** strong, rugged, beautifully styled and built of all steel.
- EYE CONTROL INSTRUMENTS . . .** entire panel easy to see, easy to read.
- YEAR-AROUND COMFORT CONTROL . . .** perfected twin-duct heating and ventilating.
- PACK-AWAY TRUNK . . .** extra-large, fully-lined with self-locking counter-balanced lid.
- BUILT TO LAST 100,000 MILES . . .** in the Pontiac tradition of economical, dependable service for a long, long time!

**GM
HYDRA-MATIC
*Drive***

THE EVER-POPULAR AUTOMATIC TRANSMISSION NOW MADE EVEN FINER!
HYDRA-MATIC, the automatic drive that has been acclaimed by motorists for over ten years can be yours on any 1951 Pontiac Chieftain or Streamliner. Step on the gas to go, step on the brake to stop—that's all you do in normal driving with HYDRA-MATIC, the drive that has outmoded the clutch pedal entirely! And this year it features new Instant Reverse! HYDRA-MATIC is an automatic transmission plus a fluid drive . . . that's the secret of HYDRA-MATIC's flashing performance, amazing smoothness, wonderful driving ease!
HYDRA-MATIC Drive is optional equipment at extra cost on Chieftain and Streamliner models only.

ALLISON MacLEOD, 126 Cumberland St., Phone 208