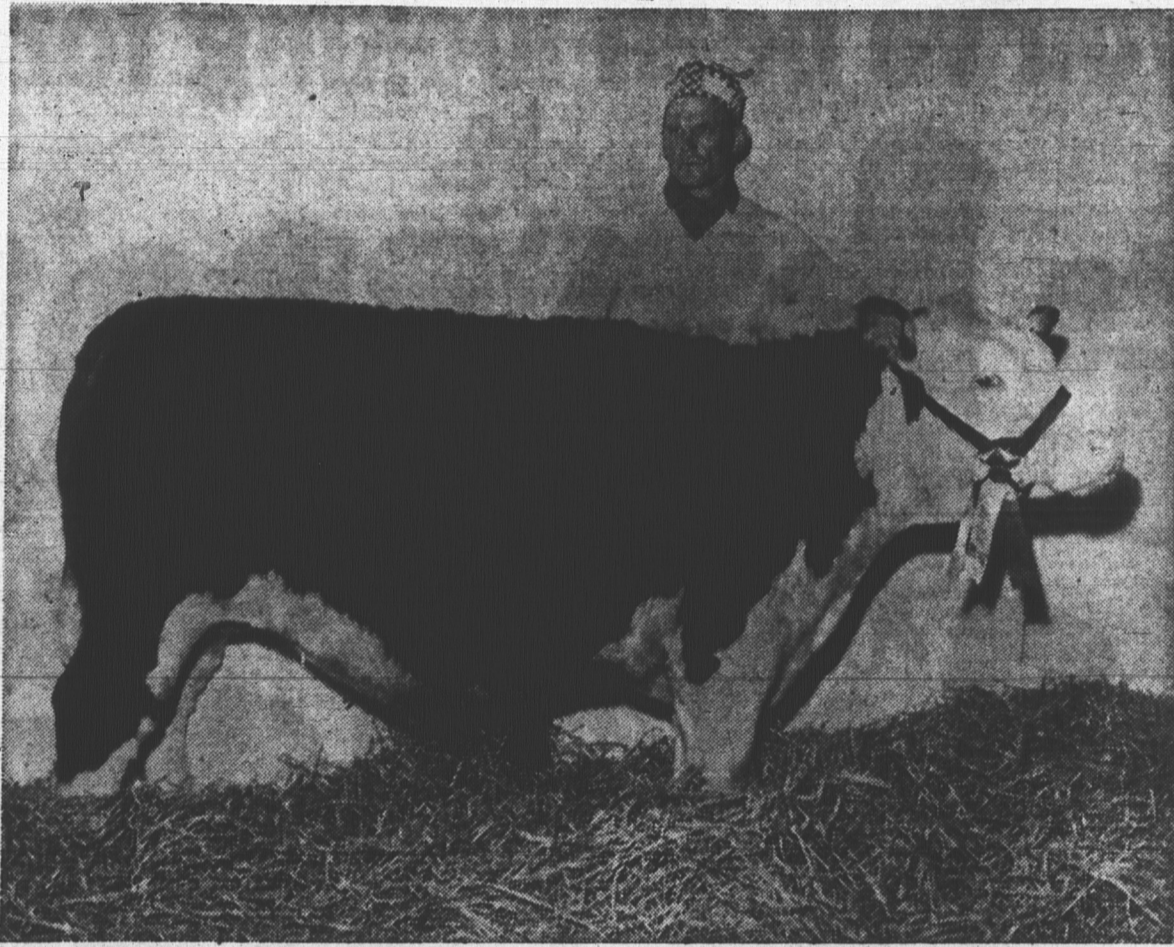


Easter

BEEF

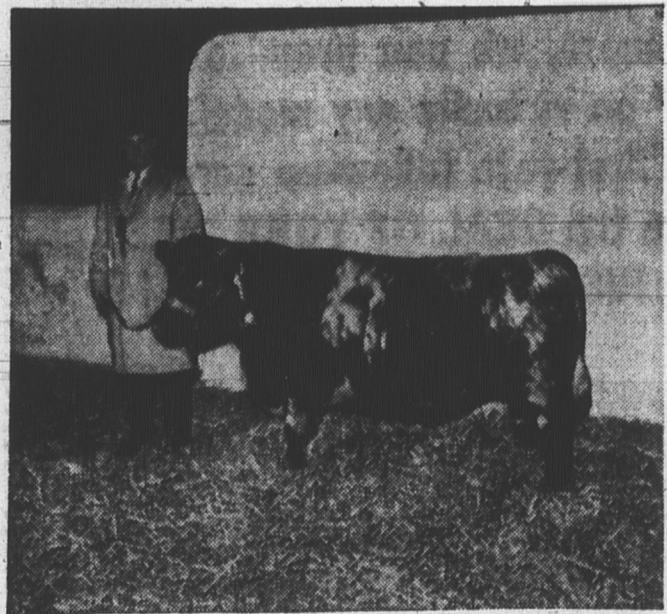
AS NEVER BEFORE OFFERED
ON Prince Edward Island



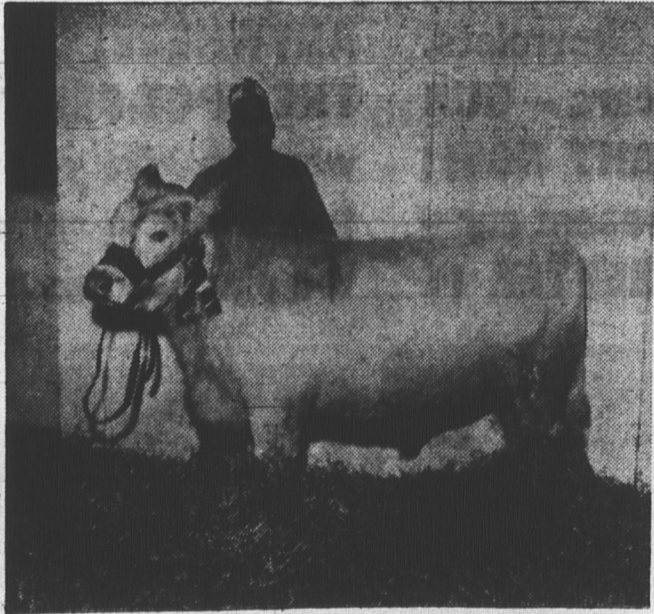
Grand Champion and Champion Hereford, owned and raised by MacKinley Bros., of North River and purchased by Co-op Supermarket.



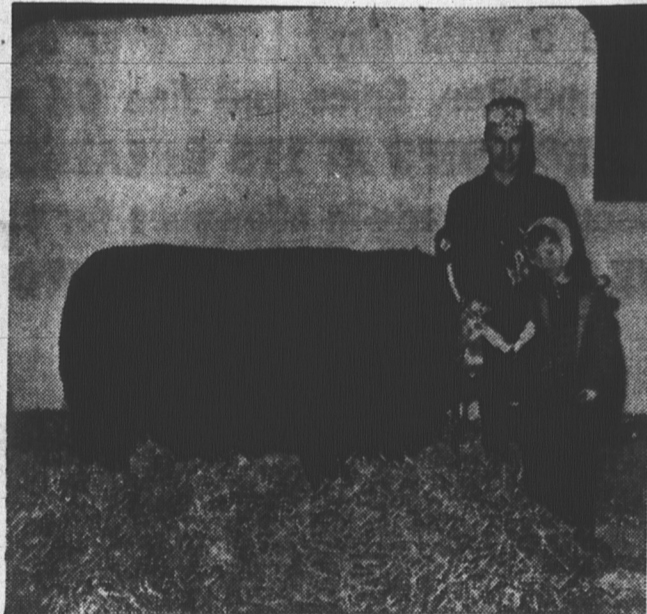
Reserve Grand Champion, Champion Aberdeen Angus and 4-H Champion, owned and raised by Mack Dixon of Clyde River and purchased by Royalty Mall Co-op.



Champion Shorthorn, owned and raised by R. R. Bell and purchased by Canada Packers.



Reserve Champion Hereford, owned and raised by Milton Ford and purchased by Swift Canadian Co.



Reserve Champion Aberdeen Angus, owned and raised by Lorainne MacDonald and purchased by Canada Packers.



Reserve Champion Shorthorn, owned and raised by Roy Jewell and purchased by Canada Packers.

BUY YOUR EASTER BEEF FROM . . .

Congratulations

are extended to the many beef breeders who exhibited fine beef steers in this year's Easter Beef Show and Sale.

We would also like to offer our sincere thanks and appreciation to the many buyers who made this sale such a success.

CO-OP SUPERMARKET, City

CO-OP ROYALTY MALL SUPERMARKET

CANADA PACKERS, City

SWIFT CANADIAN CO. LTD., City

HERB MacEWEN, Summerside

DOMINION STORES

SUMMERSIDE CO-OP

WENDELL MacQUARRIE

ANDREW GASS

RANDALL BOATES

ELLIS BROS.

MELVIN FORD

OLD SPAIN RESTAURANT, City

ZAKEMS, City

SUNNY ISLE FARMS

GROVE MacMILLAN

TOM SANDERSON

LEO PETERS

JAMES HARRIS

O'LEARY CO-OP.

CAMPBELL & BOWNESS, Kensington,

LLEWELLYNS LTD., Montague

KENSINGTON CO-OP.

FORDS MEAT MARKET, City,

MacLEANS GROCERY, Winsloe

LORNE NICHOLSON.

WIGHTMAN'S SUPERMARKET, Montague

A. B. MacRAE, Rae Dale Farms,

GAUDETTE SAVE EASY, Summerside

SOBEYS, Summerside

WESTERN HOSPITAL

R. L. SANDERSON, St. Peters

MacCONNELLS CLOVER FARM, Georgetown

PERCY POOLE, Souris

MICHAEL'S GROCERY, Euston Street

DOWS RESTAURANT

F. J. Shea & Son, St. Louis

MacLEAN BROS., North Wiltshire

CO-OP SUPERMARKET, City

GALLAGHER CLOVER FARM, Mt. Stewart

N. S. TAWEEL'S CLOVER FARM MARKET

Many other merchants on P. E. I. will be displaying Easter Beef this week. Look for the display sign at your local grocers

. . . We urge you to support these merchants who have made this year's Easter Beef Show and Sale such a success.



Reserve Champion 4-H, owned and raised by Reta Hayden and purchased by Sunny Isle Farms.