

Shaw forecasts 'new wealth, prosperity'

An unprecedented spurt of industrial development has taken place in the province and Premier Walter R. Shaw has forecast that this development will mean the creation of 3,000 new jobs for the people of the province.

Topping the list of recent developments is the fish processing plant and shipyard planned for Georgetown.

"The plant," said the premier, "should revolutionize the fishing industry of the province and promote new jobs, new homes and new opportunities in the area."

Construction of a shipyard at Georgetown for Bathurst Marine Industries is already underway. This yard will turn out a fleet of steel trawlers for the Island fishing industry.

MARKETS IN EUROPE ARE FINE FEATURE

A wide range of fish products is to be processed at the Georgetown plant which is expected to be under construction early in the spring.

"One fine feature," said Premier Shaw, "is that the markets are chiefly in Europe and the extent of the services will involve a wide range of processing techniques."

Premier Shaw made it clear that the new industry in Georgetown will not interfere in any way with any developments in other fishing areas. "The Souris centre will be extended," he said, "and new druggers will be provided for this output."

In the Montague area, a million-dollar frosted food plant, operated by Langley Fruit Packers, began production last year with the processing of Brussels sprouts and the activities of the plant are to be expanded this year with new lines of production.

The Montague food plant, when it hits its stride of production, is expected to change the agricultural picture over a wide area of the country as did the Seaman Bros. (Canada) Limited plant at New Annan.

The New Annan plant, also a processor of frozen foods, has been in operation for several years and has given the economy of Prince County a tremendous boost.

"One producer," Premier Shaw said, "received over \$7,000 net from the plant last year for his produce of 100 acres. Other producers have had similar satisfactory returns."

GOVERNMENT GENEROUS WITH NEW INDUSTRY

The government has been quite generous with the new industry it has enticed to locate in the province. The New Annan plant was built by the government at a cost of approximately \$1,000,000 for Seaman Bros., on a lease-purchase basis. A similar arrangement has been made with Langley Fruit Packers, operators of the Montague plant.

In the case of the Bathurst Marine Industries Shipyard at Georgetown, the provincial government is assisting the company to the extent of \$300,000. Further assistance may be given, if necessary.

The large fish plant for Georgetown will be provided by a Canadian-Newfoundland group, the organization of which has not yet been announced. Trade name of the Georgetown plant will be Gulf Garden Foods Limited.

Commenting on the province's promotion program for the development of major industry, Premier Shaw said "I think I am quite safe in saying that when larger and small projects are brought into full operation, we will have upwards of 3,000 new jobs for Prince Edward Island people."

NEW HOMES, NEW WEALTH, NEW PROSPERITY

"We are training on the job and through our vocational schools, young people to pick up these jobs. This does not take into consideration the development on the farm, the sea and in other directions, the new crops that will be produced and the labor requirements that will be necessary to produce them."

"The thinker, the tailor, and the mechanic, construction, the gas stations, the stores, provincial revenue, and every phase of our economy will be strengthened. Wherever there is a new project developed, we are going to have new homes, new wealth, and new prosperity coming to the Island."



HON. WALTER R. SHAW
"Every phase of economy to be strengthened"

TOON BOOS! TOWN REB...

Shipyard work pushed to hit spring deadline

By J.W. LAVERS

Two dates in the year 1963 will stand out in the long history of the historic Town of Georgetown. The first, Aug. 20, was the date that the provincial government announced that it would co-operate with a Canadian-Norwegian development organization in the establishment of a multi-million dollar, fully integrated fish and processing plant, since named Gulf Garden Foods Ltd., to be located at Georgetown and that construction of the processing plant would begin in the spring and was expected to be in operation in the fall of 1964.

Again on Nov. 4, Premier Walter R. Shaw, confirmed that a New Brunswick Shipbuilding Firm, Bathurst Marine Limited, would locate its facilities at Georgetown and that the government had signed an agreement with the firm, under which the province will assist the company by means of a \$300,000 loan over a 12 year period.

The town of Georgetown has contributed a large tract of land in the vicinity of the government marine railway slip, on which the buildings are being constructed. Strongly rumored is the possibility of the provincial government replacing it with a new slip, a harbor improvements and power lines. The federal government will be either torn down or removed from its present site and that its replacement will be located on property further uptown from the waterfront.

At the time of the announcement regarding the location of Bathurst Marine Limited at Georgetown, Jens Moe, president of Bathurst Marine Limited, was quoted as having advised the government that it was within a relatively short time the shipyard would employ upwards of 200 people.

The company will build ships for the Atlantic fishing fleet, and also for Gulf Garden Foods Limited. It is expected that at least seven ships will be built for the Georgetown plant. At the time it was pointed out by a member of the provincial government that the Prince Edward Island Fishermen's Loan Board is planning to enlarge the Souris dragger fleet, and that the Georgetown shipbuilding company may build these druggers.

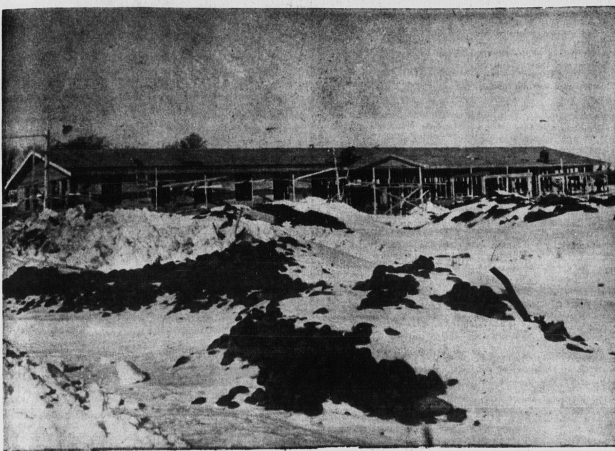
Ship construction will be carried on during the winter months, thus assuring a continuous 12-month employment project.

Between 700 and 800 people will ultimately be employed and the latest techniques will be employed in the production of high quality products. The operation of the new plant will in no way interfere with existing plants. The government will provide \$250,000 towards construction of the first \$1,000,000 phase. The complete complex will cost between \$5,000,000 and \$6,000,000. Equipment for the plant and fishing boats required will all be built in Canada.

The location of Gulf Garden Foods Limited will be on the west end of Water Street in an area at the head of the large and modern Railway Wharf. To provide sufficient space for its erection the present Canadian National Railway Station will be either torn down or removed from its present site and that its replacement will be located on

FEDERAL STAKE
The provincial government has also asked the Atlantic Development Board for aid in the Georgetown industrial project, including water and sewer lines, improved roads, a railway spur, harbor improvements and power lines. The federal government

CONTINUED ON PAGE 4A



NEW SPIRIT IN GEORGETOWN AS SHIPYARD'S BUILDINGS RISE



... AND NO LONGER WILL GRASS GROW ON THE TOWN'S RAILWAY TRACKS



NOW VALUED NEAR \$10½ MILLION—TOURISM IS SECOND INDUSTRY

Work on the construction of three large buildings on the site of Bathurst Marine Limited Shipyard at Georgetown is progressing favorably and weather has failed to halt operations in the drive for a spring deadline completion.

The larger of the three buildings is a steel framed building in which the steel druggers will be assembled. Due to the type of ground on which the site is located it was necessary to drive 125 spruce piles each 20 feet in length. These piles were driven by Wellner Construction and are in clusters of four, placed 20 feet apart around the perimeter of the building to support the structure.

The building is the metal and plate shop, of steel frame construction and measures 220 feet by 80 feet and will be used for the assembling of sections of the ships under construction and will allow building to be done indoors and on a 12-month basis.

STEEL ARRIVES
It is located on the south side of the site and runs north and south. M.F. Schurman Co. Ltd. will, in a few days have completed pouring the cement wall around the building. The foundation wall is eight inches thick and varies in height from six feet to about 12 feet on the south end of the building where the ground slopes away.

Above each cluster of piles cement pads were built. Each pad is 24 inches square and protrudes inside the wall to form a base for the upright beams of steel. These steel beams will rise 40 feet and will support the steel cross beams and roof. Steel for the frame and the wall and roof construction has already arrived in Georgetown by rail and has been moved to the plant site. It is expected that experienced steel workers will arrive in the near future to construct the building and they will be assisted by local labor. Now employed on the site are about 20 workmen.

Well advanced is the construction of a large building to house the various offices of Bathurst Marine Limited. This building is located on the north side of the site and runs east and west. It measures 116 feet by 34 feet and is of wood frame construction. It has a cement foundation and is reinforced by three-quarter inch steel rods placed one foot apart.

The foundation is six feet high and eight inches in width and a three-foot wide cement footing runs the length of the building from east to west, to support the center wall and two wall footings run north and south across the building.

A boiler room measuring 37 feet by 17 feet is provided for and is one foot deeper than the rest of the building. The building will contain a president's room, a conference room and clerical and secretarial staff rooms.

Workers are now engaged in shingling the roof of this building and partitioning off the interior. The third building now under construction is located to the west of the large steel framed building. This structure on the site which operations were first recently commenced will be two second floor of the Georgetown post office building, Martin Yeatman construction. It measures 75 feet by 30 feet and will be used as a mould loft and carpentry shop. Crossed piles, 25 inch construction superintendent and Albert Skinner is the car around the building perimeter at center foreman.



HON. LEO ROSSITER

a distance of four feet apart to support the structure.

The site is alive with activity and very few days work have been lost due to weather. Bathurst Marine Limited last fall opened temporary offices on the second floor of the Georgetown post office building, Martin Yeatman construction. It is the manager of the Georgetown operations. On the construction site, Ernest Poole and Albert Skinner is the car around the building perimeter at center foreman.

The Island in '63

Prince Edward Island's potential for prosperity took giant jumps during 1963 as an industrial development program started by the provincial government began to show results.

A \$1,000,000 food processing plant opened late in the year at Montague, but the big news was the huge fish processing plant announced for Georgetown which is estimated to cost more than \$5,000,000 when completed. In addition, Georgetown also became the site of a ship building firm that will begin operations this spring or early in the summer.

As the direct result of the industrial growth the province will benefit to the tune of some 3,000 new jobs, Premier Shaw estimates.

At the same time the tourist industry hit a record value of more than \$10,300,000, cracking the \$10,000,000 mark for the first time and taking over as the province's second most valuable industry.

Other reports of the Island's strides toward greater economic health are contained in this special 22-page report.



OUTLOOK FOR ISLAND TRADE IN '64 IS GOOD—REID SANGSTER



FISHING CATCH WAS DOWN, BUT CASH VALUE AT ALL-TIME HIGH