



FAWN RESCUED IN EVERGLADES

This tiny fawn deer is carried from a flooded section of the Everglades on the shoulders of George Eddie of the Florida Game and Fresh Water Commission. Conservationists are in a row with the Florida Flood Control District over flooding of the Everglades north of the Everglades Park claiming the young deer are being drowned in the deep water. (AP Wirephoto)

So Many Happy People Surprise British Writer

Frank Tuohy, 41, is a British writer who has lived in Poland and Brazil and now is professor of English at Waseda University in Japan. Recently he has been in Communist China, and brought out this uncensored report on life there.

By FRANK TUOHY, PEKING (AP) — This is my first visit to China, and I am surprised to see so many happy-looking people. Yet the Chinese are subjects of one of the most complete dictatorships the world has ever known.

Take a Sunday afternoon on Tien An Men Square in Peking. There are people everywhere: Families with children in flowery quilted capes, wrinkled old men in fur hats and sheepskin coats who seem to be visiting the capital from somewhere far beyond the Great Wall, and boys and girls who jump down from trucks and join the throng.

For the most part it would be impossible, even for a Chinese, to tell how prosperous or how poor they are, or where they come from. This is because their outer clothing — in winter and spring, usually a padded jacket — is made of the regulation blue

denim. Every Chinese citizen gets an adequate ration of this each year.

For the girls there can be no competition about hairdos, makeup or clothes. I even saw, in a girls' dormitory on a university campus, a quotation from Chairman Mao Tse-tung which one of the roommates translated as: "Girls must work hard and not decorate themselves."

Rarely do you see two lovers wandering hand in hand into a world where Chairman Mao may not enter.

A recent play, *Women Fliers*, produced by the cultural troupe of the political department, Chinese air force, tells of a girl cadet whose boy friend tries to make her quit school after one of her comrades suffers a fatal accident. Her mind is in a turmoil: She begins to have difficulties in landing her plane evenly.

The political commissar says: "We must give her a lesson in class consciousness. It is obvious that her boy friend is trying to influence her with bourgeois individualistic ideas and drag her over to his side. We must counter this."

In the end she gives up her boy friend, and lands her plane evenly. All the other girls applaud happily. She has re-entered the world of Chairman Mao.

No kissing takes place in the four films I have seen in China. All the heroines were sexless, breastless and sterile; their energies were fixed on the brigade, and their love on Chairman Mao.

China's principal birth control

We Trade
* Furniture
* Appliances
* Televisions
FIRESTONE
Home and Auto
Ltd.
Dial 4-5547

technique is to discourage marriages before the age of 25. ART EMASCULATED

Present-day China is belittling physical love and despising the works of the creative imagination. Private feelings are canalized off into public displays of aggression. The party's attitude to love and art is turning China into a desert place, even though her communes flourish and the greatest part of her population is better off than it has even been.

The vast majority of people seem to be getting the life they want, and they are told of no other.

Without the machinery of the modern world, people themselves move faster: Children tidying up the streets, students planting trees, teams of women transplanting rice in the paddy fields, militia on the march. Everyone knows that not a minute can be wasted.

Out in the country, a production team comes striding past— young girls in blue shirts and pants carrying mattocks and shovels. They have not seen me, they are not posing for photographs—but they are laughing and singing.

30 Years of Service Speaks For Itself...
For the Finest QUALITY MEATS Visit Queen St. Meat Market

In the past three years some of the age-old food problems have been, at least temporarily, resolved. Only rice is rationed. POVERTY CONTROLLED

Though China's living standards are far behind those of the West, few people today look hungry. Though clothes are uniform and often patched, you see few people in rags.

A key idea is "self-reliance"—the notion that the Chinese can do things by themselves. This confidence has been the great source of Chinese energy.

"Self-reliance" is a belief which has risen out of a desire to reject Western influences completely.

The Guardian, Charlottetown, Tues., May 3, 1966. 7

One Western contribution, even the Chinese will admit, is vital to the new China. That is Western medicine. In country districts, nurses visit every commune, and the headquarters of every commune has a clinic offering both Chinese and Western treatments, the latter predominating. True success in this field has been preventive medicine and hygienic control.

Surely, I kept thinking as I saw these giant steps in the right direction. The Chinese have cause for self-congratulation. Surely they must sometimes

give themselves a pat on the back.

But I was wrong. Any Chinese you ask will say that these achievements have a single source: Mao's life and published works.

WATCH FILM IN ABBEY
LONDON (AP)—Tourists in Westminster Abbey this summer will be able to watch free color movies without disturbing worshippers. The movie screen, showing colorful royal occasions in the abbey, is in an unobtrusive corner and the sound-track is wired through headphones.



stenographers



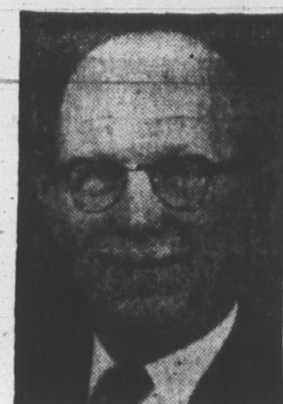
steeplejacks



stoves

FIND ANYTHING... FAST IN THE YELLOW PAGES

A GOOD NAME TO KNOW...



STEWART G. IVES, C.L.U.
82 Queen St., 894-4737

Competent advice and service in fields of life and health insurance for personal or business needs.

The **EXCELSIOR LIFE**
Insurance Company

Holman's P.S.I. STEP INTO A WHOLE NEW WORLD OF SHOPPING PLEASURE



OPEN UP A HOLMAN'S OPTIONAL CHARGE ACCOUNT

It's so Flexible... So Simple... Because This Holman's Account Combines...

1. The Convenience of a Charge Account

Isn't it just what you've always wanted... what you've been hoping would some day be invented... THE ONE ACCOUNT THAT WRAPS UP ALL YOUR SHOPPING NEEDS INTO ONE NEAT PACKAGE. Today's modern shopper is busy, on the go, wants to save time... this special Holman's account has been designed with you and your time in mind. With this personalized account, you can shop anytime you want to, for small or large items... and just say: "CHARGE IT"... that's all! And all your purchases are grouped together on one account. THEN? you choose the method of payment. The account may be paid in full on receipt of your statement or spread conveniently over a period of time, in smaller monthly payments.

YOU HAVE UP TO 24 MONTHS TO PAY, depending on the amount of your account, and UP TO 36 MONTHS ON LARGER PURCHASES.

SHOPPING WAS NEVER EASIER

Just present your Optional Charge Account card and say: CHARGE IT. In the case of budget buying, the same applies. There's no need for a special trip to the Customer Accounts Office each time. And when you order by phone or mail, simply refer to your account. What could be easier or more welcome?

TAKE ADVANTAGE OF ALL BIG HOLMAN'S SALES

Never again need you be worried about missing Holman's Easter, Christmas or special sale buys, because of a temporary lack of funds. Simply charge, and pay for it conveniently out of income over a period of time.

You can always shop at Holman's with complete confidence and satisfaction. Holman's are members of The CREDIT GRANTERS ASSOCIATION OF CANADA and The INTERNATIONAL CONSUMER CREDIT ASSOCIATION.

Buy wisely... and pay promptly!

2. The Ease of Small Monthly Payments

HERE'S HOW IT ALL WORKS:

The balance shown in your first statement is used to determine the minimum monthly payment.

FOR EXAMPLE:

- If your balance is 50.00 MINIMUM MONTHLY PAYMENT is 5.00
- If your balance is 120.00 MINIMUM MONTHLY PAYMENT is 8.00
- If your balance is 200.00 MINIMUM MONTHLY PAYMENT is 10.00
- If your balance is 400.00 MINIMUM MONTHLY PAYMENT is 20.00

ONE MONTHLY STATEMENT

Once monthly, you receive a statement, showing you the balance outstanding on your account, listing purchases, payments, etc., together with a copy of your bills, for easy verification. An equitable service charge will be added to your account each month and is computed on the previous month's balance. For your convenience, the schedule of rates is available at our Customer Accounts Office.

So, HERE'S HOW YOU CAN USE YOUR HOLMAN'S ACCOUNT TWO WAYS:

If you pay your balance in full each month, then, there will be no service charge. Or, you can enjoy budget-buying and spread your payments up to 24 months, depending on the amount, and up to 36 months on larger purchases.

* If your monthly balance is ...	* Your service charge will be ...
50.00	.70
100.00	1.45
150.00	2.05
200.00	2.70
250.00	3.20
300.00	3.65
350.00	4.00
400.00	4.45

* The above terms are subject to change.

want to **SAVE** time, trouble, money?

You'll find exactly the type of account or deposit arrangement at any branch of the Royal to suit your needs—plus a wide range of other useful services, too.

- ✓ Tick 'Off' this check list. Then visit your convenient neighbourhood branch of the Royal Bank. Remember—you can bank on the Royal!
- Savings Accounts—for steady savings and accumulation of interest. A Savings Account at the Royal can give you a sense of security. Your funds are accessible at any time and you enjoy complete safety.
- Personal Chequing Accounts—for paying bills without disturbing your savings. You can save as much as a third in service charges, too.
- Current Accounts—the logical way to keep simple, accurate records of receipts and payments; your cancelled cheques are returned monthly.
- Savings Certificates—a high-yield term deposit, redeemable in full at any time with interest payable half yearly.
- Deposit Receipts—high-yield term deposit; interest payable at maturity.

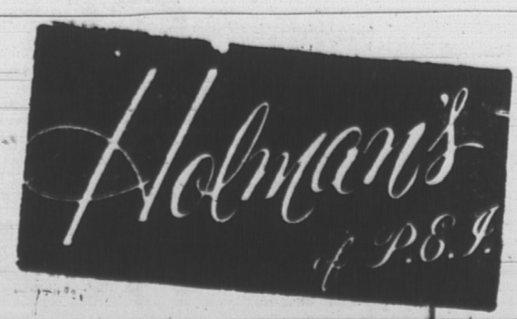
All these—plus Money Orders—Travellers Cheques—Safety Deposit and Safekeeping Services—Foreign Exchange—Drafts—Letters of Credit—Night Depository Services—Money Transfers—Investment Services—termplan loans—many others.

Drop in to your nearest Royal Bank branch, soon.



ROYAL BANK

Charlottetown Branch — E. C. WRIGHT, Manager
Branches also in Hunter River, Mount Stewart, Summerside and Tyne Valley



TO OPEN ONE OF THESE WONDERFUL NEW DUAL-PURPOSE ACCOUNTS, simply call at:
Holman's Customer Accounts Office,
Summerside or Charlottetown