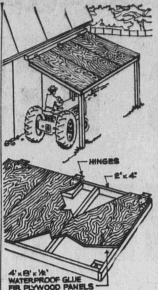
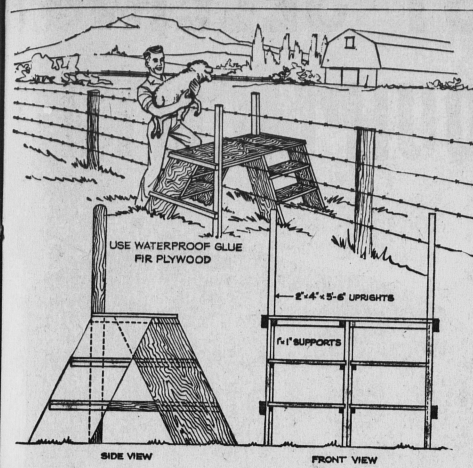


Do-it-yourself page; ideas ease farm work



SAVES LABOR Loading ramp easy on back

Since you can't get the back of a truck down to ground level, the next best thing is to get ground level up to the back of the truck.

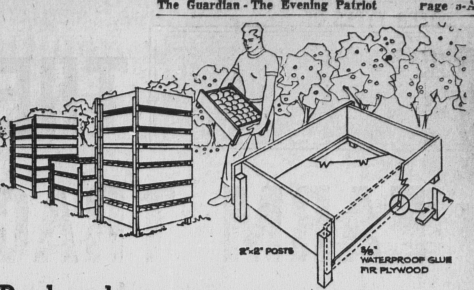
A simple loading platform such as the one shown here will go a long way toward making life more bearable for your back. Heavy material, such as milk and other produce, sacks of seed or cement, can be transferred horizontally to or from a truck or other conveyance. Carrying it up or down is done in two easy steps instead of one spine-cracking hoist.

A little more than half a sheet of three-quarter-inch fir plywood, some two by three lumber and four by four posts are all the materials needed to build the platform.

Assemble the frame as shown in the diagram, nail on the plywood for the platform and step and there is a loading platform. It won't be so heavy that two men can't move it to wherever it is needed.

Since it will be used outdoors, be sure the plywood you use is the type manufactured with completely waterproof glue. It has a brand on the edge of every panel: "PMBC Exterior."

To assure long life, give the platform a couple of coats of good exterior house paint, making sure the edge grain of the plywood and lumber is well sealed.



Produce boxes care prove worthwhile on every farm

Regardless of the type of farm you operate you will probably have at least one good use for a set of small produce handling boxes.

The most useful of these is the nesting type, stacking and storing are easier and more secure.

Most nesting boxes contain a certain amount of hardware — angle iron, for example — so that anyone who wants to make his own will require metal working equipment.

The only hardware in the boxes shown here is nails. The rest is familiar wood. The boxes themselves are of an extremely simple design, as can be seen in the construction drawings.

PREVENTS BRUISING
The smooth interior of the box, made possible by external framing, prevents bruising of fruit, berries or vegetables and simplifies cleaning.

From the cutting plan you can see that four of these nesting boxes can be made from a single panel of inexpensive 3/4" fir plywood plus the small amount of lumber required. There isn't a square inch of waste material.

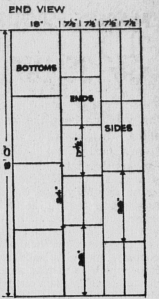
According to the plan, the box bottoms fit into grooves — rabbets — in the side and pieces. If you don't have a power saw to cut the rabbets, simply fasten the bottoms in place with strips of moulding or 1" x 1" lumber. Place these strips on the outside to maintain the smooth interior.

For the best results the boxes should be glued and nailed. Use a good waterproof glue and follow the manufacturers' recommendations.

The fir plywood should be the type made with waterproof glue. Make sure your lumber dealer gives you plywood with the edge mark "PMBC EXTERIOR" on every panel. This is your guarantee that you are getting plywood with a completely waterproof glue line.

Paint the completed boxes with a quality exterior house paint, making sure to seal the edge and end grains of the plywood and lumber.

NEGRO IS POSTMASTER
LOS ANGELES (AP)—Leslie N. Shaw was sworn in today as acting postmaster of Los Angeles, first Negro to head postal operations in a major city.



Plywood, lumber scraps make highly useful stile

Times change and one of the fastest modernization jobs is taking place down on the farm. But it's still a long way around a fence. Crawling over, under or through is not always practical either, especially if you happen to wear a skirt, or are carrying something.

So, although it may come as a surprise here is how to build yourself a stile.

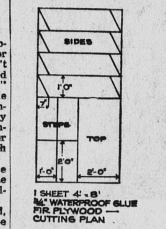
This is a stylish stile made from a single sheet of 3/4" fir plywood and a few scraps of lumber.

The cutting plan shows you how to squeeze all the required pieces from one sheet of plywood. From there all you do is cut the lumber to size and assemble the stile.

One thing you will see that the steps are set in grooves in the rabbet pieces. This rabbetting requires a power saw or a unibit plane. If you don't have either of these, all you need to do is exchange the 1" x 1" supports for something a little more substantial — 1" x 4" lumber, for example — and carry on without the rabbets. Remember that this will make your steps three quarters of an inch narrower.

For the sake of appearance and weather resistance, give the stile a good painting with a quality exterior house paint.

When you buy the plywood, make certain you get the type made with completely waterproof glue. All fir plywood made in Canada with waterproof glue is identified by the brand "PMBC Exterior" on the edge of every panel.

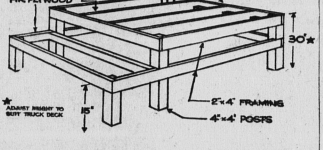
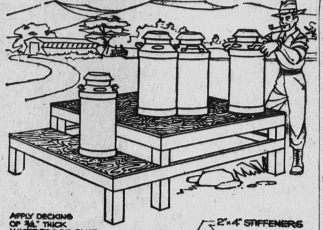


SELENED BIRDS

British scientists found that during the eclipse of the sun in 1959 chaffinches were silent for 22 minutes before and after the shadow.

USED PAPER MONEY

The use of paper money in the United States dates back to 1690 and the Massachusetts Bay colony.



Sackholder easy to make

It's the small, awkward job around the farm that wastes so much time.

This simple fir plywood sack holder, for instance, performs a simple function, but saves a great deal of time and frustration.

To make the holder, cut a circular hole in a piece of three-quarter-inch fir plywood, three feet square. An opening of 20 1/2 inches will accommodate most standard size sacks. But check the size on the sacks you use most.

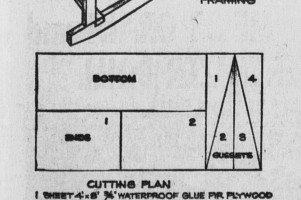
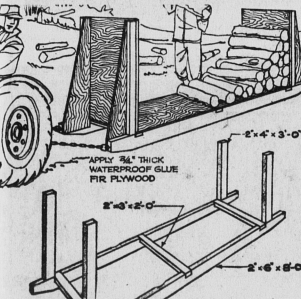
For light loads, the holder can be hand-held. For heavier duties, sturdy legs can be fashioned from pieces of fir plywood in the shape of an "L".

arches formed with four straight pieces of lumber joined together by fir plywood gussets. Saw and hammer are the only tools needed to make them.

When a row of these rigid frames is erected on a standard foundation, the skeleton is sheathed with fir plywood, to provide "muscles."

The result is a building as long as required, with no interior supports. The ends of the building do not contribute to its strength and can be either left open or made into lunge doors for its easy access of machinery or cattle.

Booklets (in French or English) containing all building details of a rigid frame structure are obtainable from your local lumber dealer.



Farm has dozen uses for old-fashioned sleigh

There are still a dozen and one uses on any farm for a good old-fashioned sled. Here is a sled you can build yourself, quickly, easily and inexpensively. And when completed you will have a vehicle that is built to stand a lot of punishment.

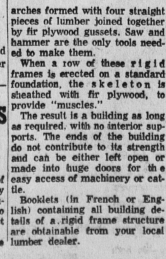
The designer of the sled used the usual shear strength of fir plywood to make rigid upright ends. This gusset system, used to anchor the uprights, is the same as that employed in many buildings.

The sled shown requires only some lumber and a single sheet of 3/4" fir plywood. If you want more capacity, say, to haul firewood, use the same design but simply expand it. For example, use a whole panel of plywood on the deck for a sled measuring four by eight feet, with ends four feet high. There's one cord.

Construction is very straightforward. Notice that the upright 2 x 4 pieces are the only nailed to the runners. The plywood flusets supply the strength.

Use plywood made with a completely waterproof glue line. It is identified by the industry mark on the edge of each panel: "PMBC Exterior."

Top it off with a weather-resistant coat or two of good exterior house paint or stain.



The First CHOICE

For Every Member of the Family Who Wants

CLOTHING SUITABLE FOR THE JOB

Rural Families, as well as City Families, appreciate the wearing qualities of good clothing...particularly if this quality is coupled with reasonable prices. Smallman's pride themselves in the fact that more and more rural families each year, make their selections here, and we feel that contributing largely to this is the top name brand merchandise that is on display at all times. We are certain that whatever may be your clothing requirement we at Smallman's are in the position to fill it. Why not drop in the next time you are in town. You are assured of a most cordial welcome, and we would genuinely appreciate the opportunity to serve you.

YOUR HOST TO QUALITY FAMILY CLOTHING

