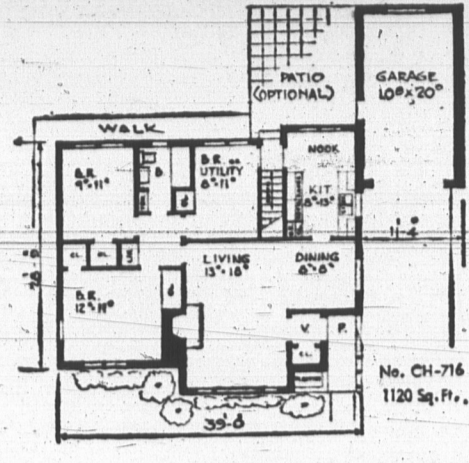


This Design features a paneled picture window in the living-room, and a large breakfast nook in the kitchen. The bedroom windows are high for added privacy. Utility room with separate door from the rear vestibule could serve as an extra bedroom, study or den. There is provision for an extra washroom in the basement. Illustration shows brick with stone facing, but full details for building in frame are supplied. Including the optional garage, house could be built on a 65 foot lot. 1120 Sq. Ft.



Good Time To Plant Bulbs For Spring Flowering

In the next few weeks thousands of people throughout Canada will be planting bulbs for flowering next spring. Ninety per cent of far-seeing gardeners will be planting tulips, daffodils and hyacinths. Only a very few will be setting out the other spring flowering bulbs that help round out a perfect spring picture.

This small group has discovered a new early spring joy, that of being greeted, when the snow has scarcely melted, with perky little blue, white or yellow flowers appearing everywhere, underneath shrubs, in odd corners and near the empty lily pools in the rock gardens.

The beauty of these little bulbs, I think, is the way they suddenly appear out of nowhere in early spring when conditions would seem much too rugged for the toughest plants, let alone for slender little bulbous plants such as these.

Listed here are a few lesser-known types of small bulbs that will give you endless delight in early spring. They should be selected from the catalogues and stores early, for they must be in the ground before the end of September.

Hardy bulbs with white or blue flowers, which appear as clusters of bells around a central stem. The common one is Heavenly Blue, which flowers with the daffodils and makes a splendid contrast with the golden trumpets of these flowers.

RUSCHKINIA
These are little bulbous plants with delicate white bells, striped with blue, quite similar to the squills. They should be planted three inches deep and about three inches apart in a well-drained soil.

SQUILLS
The Siberian squill is the hardiest and the one most commonly grown. It is early-flowering and has deep-blue, star-light, nodding bells. Tubergen's squill (Scilla tubergeniana) is much larger in every way and lighter-blue in color. Plant the bulbs in masses under shrubs, in rock gardens, near walls, or on bare banks under large trees. Plant the bulbs three inches deep, 12 to 15 in a group, with a large number of groups to provide a show of the first year.

MISCELLANEOUS SMALL BULBS
Other bulbs in this category are the cyclamen-flowered narcissus, which includes Peeping Tom and February Gold, very large versions of this group but harder than the common species, and miniature daffodils and the odd hoopoe-necked narcissus, all very small daffodils with unique appealing flowers.

U.S. Nazi Head Pleads Guilty

CHICAGO (AP) — George Lincoln Rockwell, 46, leader of the American Nazi party, pleaded guilty and paid a \$400 fine here for his activities against racial integration.

The white supremacist appeared before Magistrate James Sullivan on charges of soliciting funds and conducting a meeting on Chicago park property without a permit.

The warrant was based on a meeting Rockwell staged in Marquette Park, in a racially-tense area of the southwest side, Aug. 21. He was arrested Sept. 10 when he tried to lead a march into a Negro neighborhood.

The march was to have countered demonstrations by Dr. Martin Luther King Jr. and other Negro civil rights campaigners in the same area during the summer.

A member of Rockwell's party, Ralph Perry-Forbes, 36, of El Monte, Calif., paid a \$300 fine Tuesday on his conviction Sept. 12 of disorderly conduct and resisting arrest.

SNOWDROPS
These small, white, bell-shaped flowers with inner corollas that show tips of green are so precocious they may often be seen flowering through the snow during a mild period in early April. They should be planted away from the walls of the home, otherwise they might be forced into flowering in February and be frozen.

These small bulbs should be planted as soon as possible after receipt. So order them right away and plant immediately. Let them three to five inches deep and three inches apart in a moist peaty soil in light shade such as the shade of a tree, but not directly under the tree. The plant snowdrop (Galanthus elwesii) appears to be the best for growing in the colder parts of Canada.

SNAKE'S-HEAD, OR CHECKERED, LILY
These quaint little bulbous plants have nodding bell-shaped flowers checkered or spotted on the inside, in slender stems. They have gained considerable favor in recent years for planting in the shade of shrubs, where their graceful foot-high spikes of flowers show to best advantage. The white, light-purple and soft-violet varieties show up best in the garden. Plant the bulbs about four inches deep and on the prairies mulch with leaves.

GRAPE HYACINTH
These are very easy-to-grow

Hard Work Said Cause Of Sweating In Space

By RONALD THOMPSON
HOUSTON, Tex. (AP)—Hard work—not the atmosphere he breathed, as a Russian cosmonaut claimed—caused Richard F. Gordon Jr. to sweat so much he cut his Gemini 11 space walk short, says the doctor for the U.S. astronauts.

Dr. Charles A. Berry described as "peculiar" the way Dr. Boris Yegorov, who flew in space two years ago, said Russian spacemen do not have a sweat problem because they breathe a different atmosphere in orbit than do Americans.

All U.S. spaceships have been equipped with a pure-oxygen atmosphere, mainly because it requires a less complex control system. Russian vehicles have flown with a mixture of nitrogen and oxygen, much like air on earth.

Berry denied that the 100-per cent oxygen atmosphere caused American spaceman Gordon to perspire more than usual.

Gordon hurried back to the spacecraft Sept. 13 after spending 44 minutes of a planned 115-minute stay outside Gemini 11.

Officials said he worked so hard tying the spacecraft to an Agena rocket for a later experiment that his suit's evaporative gear did not expel body moisture fast enough. Sweat streamed down his face and into his eyes.

PERSPIRES FREELY
Berry described Gordon as a man who "does perspire very freely."

Yegorov told a space development meeting in Geneva, Switzerland, this week that a perspiration problem doesn't exist for Russians "because the atmosphere and environment of the Soviet space cabins and space suits are absolutely normal whereas Americans rely on artificial air mixture."

Berry said in an interview at the manned spacecraft centre here: "That's sort of a peculiar way to put it. You're artificially supplying everything up there—whether it be air or pure oxygen. The atmosphere doesn't cause the sweat."

"The temperature of the atmosphere and the air flow through the (space) suit, plus how much work you ask a man to do, are the things you have to watch."

"Anyway, sweating is the way the body cools itself. The body has to sweat in order to remain cool. If you think you have a problem if you sweat, man, if you don't sweat, you're really got problems."

Four U.S. astronauts have ventured outside—an orbiting spaceship for a combined time of six hours 52 minutes and all reported that it was a fatiguing experience. The only Russian to ever walk in space was Alexei Leonov. He spent 10 minutes outside Voskhod 2.

Yegorov, whose spaceflight in October, 1964, ended after only one day in orbit because he and one of the two other men aboard got sick, also claimed that breathing more than the normal amount of oxygen could cause heart and blood complications.

Berry said it is true that after some U.S. flights doctors detected decreases in the astronauts' blood cell mass and it appeared to "us perhaps some of this is related to an oxygen environment."

However, he added, flights of up to two weeks showed that the loss was not serious enough to cause concern on any American mission now planned, including a round trip to the moon.

N.S. Floating Fish Plant Now Begins Operations

LIVERPOOL, N.S. (CP)—Mersey Seafoods Ltd. has a fish processing plant with a difference: It's built on water.

The \$600,000 floating plant, the gem of a group of young businessmen, is to begin operation soon and provide employment for about 75 persons.

One of the few plants of its kind in North America, it will have an annual production of 10,000,000 pounds of fish.

Built after fire razed this south shore town's only other fish plant in 1958 and disrupted the local economy, it has three levels containing facilities for processing, freezing and storing fish.

Facilities also are provided for the conversion of off-heads, tails and other waste—into fish meal, a byproduct used, among other things, in the manufacture of cosmetics.

TIED TO WHARF
The plant, actually a steel barge 160 feet long and 40 feet wide, is permanently tied up at the government wharf, a site selected when no suitable land could be found.

Mersey officials said the only possible site on land bordering the harbor was ruled out because of deep mud.

but we knew it would be far too much," a spokesman said. "It was just a matter of simple economics."

Three trawlers—built for the firm at a cost of \$200,000 each—will serve the plant, constructed by Steel and Engine Products Ltd. of Liverpool.

COULDN'T FIND LAND
Various attempts were made to re-establish a processing plant by various business concerns at Liverpool, but founded primarily because of a lack of suitable terrain.

Along the south shore of the harbor, half the front is residential and the other half is owned by Steel and Engine Products Ltd.

On the north side, a federal public wharf occupies the only suitable site with the remaining land mainly tidal swamp or deep mud.

General Manager George Curphey of Steel and Engine Products Ltd., drew up the

plans for the floating structure for subsidies under the federal and pointed out it could qualify fish construction regulations.

HEREFORD DISPERSAL SALE "Shed Acre Farms"
Union Road, North (Near Covehead)
Saturday, Oct 1st 12:30 sharp

- 38 Registered Cows of Domino, Duotone and Miriam's Pride and other top blood lines.
- 33 grade cows bred to champion herd sires
- 28 feeder steers and heifers.
- 23 calves from registered cows
- 15 calves from grade cows
- 3 registered bulls.

NOVA NATIONAL ROMEO 23R: son of the Royal Winter Fair grand champion, WHITERN NATIONAL VELVET, and himself the grand champion for a number of years at the P.E.I. Provincial Livestock Exhibition and reserve grand champion at the Atlantic Winter Fair in 1964.
LAZY B. REAL ASTER 24U, son of PPHR Boc Real 188.
NOREEN NATIONAL LAD, son of Nova National Romeo.

Terms Cash
Catalogue of Registered Cattle will be available.
Lunch counter on grounds

Owner: THE ISLAND DEVELOPMENT CO. LTD. Auctioneer: IVAN KERRY
If weather questionable listen to CFCY Radio
"A chance to buy the best at your own price."

HOW TO OBTAIN DESIGN BOOK

The latest design book entitled "101 Selected Suburban and Country Homes, Designed for Canadians," is now available at the offices of The Guardian and The Evening Patriot for \$1, tax free. This new edition includes color selection, etc., plus over 100 popular new designs to choose from. Also included are full designs in how to order blueprints.

Aircraft Engine Company Formed

TORONTO (CP) — Hawker Siddeley Canada Ltd. and United Aircraft Corp. said here they have formed a new aircraft engine and industrial turbine company.

To be called Orenda Ltd. it will be formed from the Orenda Division of Hawker Siddeley, which will own 60 per cent of the stock of the new company.

It will be located in the 800,000-square-foot plant of the Orenda Division at nearby Malton.

H. M. Horner, chairman of United Aircraft, said in a prepared statement that formation of the new company should materially assist United's Pratt and Whitney Aircraft division in expanding its turbine engine productive capacity.

T. J. Emmert, president of Hawker Siddeley Canada, said the association "should help to assure our production future in company with the world's leading designer and producer of jet engines."

Shop Where Parking Is A Pleasure At —
ROBINSON SUPPLIES LTD.
42 St. Peter's Road

RED CROSS BLOOD DONOR CLINICS

CONFEDERATION CENTRE CHARLOTTETOWN
(Box Office Entrance—Queen St.)

Monday, Sept. 26th 8—10 p.m.
Tuesday, Sept. 27th 2—4 p.m.
and 7—9 p.m.
Wednesday, Sept. 28th ... 9—11 a.m.
and 7—9 p.m.
Thursday, Sept. 29th 2—4 p.m.
and 7—9 p.m.

"SHARE YOUR GOOD HEALTH"
BE ONE OF THE 1,140 BLOOD DONORS URGENTLY NEEDED!
Please clip and keep for reference

Looking for an Investment that offers Security Plus Extra Interest?

GET 5½% SIMPLE INTEREST WITH TORONTO-DOMINION 8-YEAR SAVINGS CERTIFICATES

Available in convenient amounts from \$10 to \$50,000 (a \$10 certificate costs only \$7.50) and may be cashed anytime if you need the money.

Go Ahead people bank on **TORONTO-DOMINION**
The Bank where people make the difference.

R. C. TOWNLEY, Manager, Charlottetown, P.E.I.
192 Queen Street, Charlottetown, P.E.I.

Autumn Magic

HOLMAN'S

Daffy as a Dilly! London - Inspired FASHIONS GO MOD!

THE PEA JACKET
By Lady Utex. It's switched-on... It's what's happening on the scene and it's at Holman's for you NOW! Big military style out, of rich warm melton cloth in navy shade. Bright and brassy buttons, 4 big pockets. Bright red quilted lining. Sizes 8 - 16 available. **16.95**
Others at 19.95

TEE/KAY KOZIES SLACKS
Trim, taut and terrific! Wild and wonderful for where the action is. Slim and trimmed for slick fit. Of bond wool, in Nassau blue, burgundy or charcoal. Sizes 9-15 available. **10.95**

THE POORBOY!
By Koret of California. Neat rib knit, with a smart turtle neck. Stripes of red and gold or blue and gold. You're in with the Poorboy... there's one waiting for you at Holman's... like. RIGHT NOW! Sizes small, medium or large. **9.98**

It's so easy for you to open a new **CAREER GIRL ACCOUNT**
Enquire at our Customer Accounts Office.

STORE HOURS: Charlottetown — Mon. thru. Thurs. — 9-5:30; Fri. — 9-9:30; Summerside — Mon. thru. Thurs. — 8:30-5; Fri. — 8:30-9; Sat. — 8:30-noon.