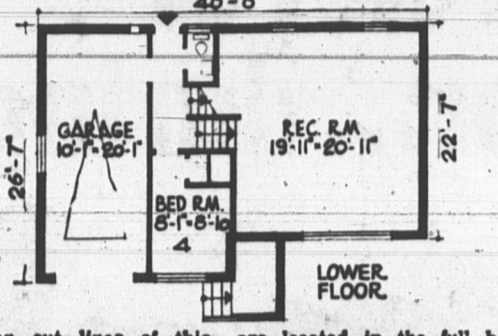


DESIGN No. CH-808
K11-Liv-Bed Rm. area 784 Sq. Ft.
Lower Fl. less garage 760 Sq. Ft.



The clean cut lines of this contemporary split level emphasize the modern trend in architectural design. There are three bedrooms on the upper level, and underneath is an extra room which would be suitable for a study, den, office, or even an extra bedroom. There is a handy wash room convenient to the back door. Furnace and utility area are located in the full basement beneath the Kitchen-Living area. There is also ample space for a large recreation room if desired. This home offers an exceptionally convenient layout for a growing family. Because of the very efficient use of the floor area, cost of building would be quite reasonable. 984 Sq. Ft. Design No. 808.

First Aid To Ailing Houses

INDENTATIONS IN CEILING
QUESTION: We converted a large closet into a sewing room several years ago. This was a plasterboard ceiling which we painted at that time, after applying a sealer first. Now the nail-head indentations are showing. How can we correct this?
ANSWER: Fill the indentations with spackle, allowing to dry thoroughly. Then touch up the spackle spots with shellac, thinned half-and-half with denatured alcohol. Then repaint.
QUESTION: We would like to paint the outside red brick chimney on our house to match the rest of the house. What kind of paint should be used?
ANSWER: Use a dampproof cement base paint, applying two coats. This comes in powder form to be mixed with water. Available at large paint stores or masonry supplies dealers. Or apply a vinyl plastic latex paint, the type for use on wood, masonry, metal surfaces.

GLUE ON LINOLEUM
QUESTION: We recently purchased a house which is three years old. When the rubber base was glued on in the kitchen, a lot of glue was spilled on the linoleum. How can this be taken off?
ANSWER: Read the label of the glue container carefully; it should contain mention of the solvent recommended by the manufacturer for this particular adhesive. Or consult the dealer from whom it was purchased. Different glues require different solvents for removal. And be careful not to allow it to remain too long on the linoleum surface; the solvent for the glue may adversely affect the linoleum.
CLEANING BIRCHWOOD
QUESTION: There are birchwood cabinets in our kitchen. How can these be cleaned? Over the stove there are quite a few grease spots on the cabinets.
ANSWER: The cabinets can be cleaned with a cream, clean-up wax, made by a nationally known manufacturer and widely available at supermarkets hardware and houseware stores; follow label instructions for use. This removes surface grease and grime, leaving a protective coating at the same time. If the cream wax does not remove the grease spots, apply a thick paste made of powdered whiting and a nonflammable liquid spot remover, placing a sheet of thin plastic over this to retard evaporation. When dry or discolored, brush off and replace with fresh paste; repeat treatment if necessary.
GURGLING SINK DRAIN
QUESTION: The water in our kitchen sink flows out very good but when the last goes down, there is an annoying gurgle. What can be done about it?
ANSWER: Since the water drains well from the sink, this is not due to pipe clogging. The gurgling may be due to a clogged vent stack, or an improperly vented fixture, creating a siphon in the trap. If the vent stack is not clogged with leaves a bird's nest or other debris. I recommend having a competent plumber inspect the venting system; one of the water seals may be broken.

PAINTING DARK
QUESTION: We want to repaint our kitchen walls a lighter color. They are now a dark green, gloss enamel. What procedure should we follow?
ANSWER: Wash down the walls to remove all trace of grease, grime, etc. Use one of the general purpose household cleaners. After rinsing thoroughly, allow the surfaces to dry out thoroughly. Then dull the gloss of the enamel by rubbing with "0" sandpaper and

Magnolia Available For Eastern Gardens

When I mention magnolias for eastern Canada to nongardening acquaintances they look at me and smile. They just will not believe that this kind of plant could possibly leave its Southern Georgia mansions and survive in our frigid climate. The name magnolia is always associated with the southern United States where, I admit, the great large-flowered southern magnolia (*Magnolia grandiflora*) flourishes in all its glory. But we are not limited to this tender species, as there are several equally beautiful magnolias, which, although deciduous will grow in the milder parts of eastern Canada and produce the magnificent blooms for which the plants are so well noted.

I must warn you, however, that the magnolia is not for those who treat plants carelessly. It is only for those who cherish and love the plants they grow, for during its first few years of life this lovely plant must be coddled and treated in the manner it deserves. The soil must be done in spring and the plants must not suffer from lack of water during the first three hot summers.

QUESTION: My husband has a plastic-upholstered chair. The leather-like material has gotten hard where his head touches the material. I am afraid it will crack and break. What can be done to soften it? The chair is two years old.
ANSWER: Consult the dealer from whom the chair was purchased; the plastic may be defective. Try cleaning the area with a plastic cleaner for plastic upholstery; available some large housewares dealers, or use a cloth or sponge moistened with a nonflammable liquid spot remover. Then use a creamy clean-up wax, made by a nationally known manufacturer, for regular cleaning of the plastic to prevent hair-oil penetration and build up.
(Note: All correspondence relating to home maintenance should be addressed to: Roger C. Whitman, Toronto Star Syndicate, 80 King Street W., Toronto, Ontario.)

FINISH OF OAK TABLE
QUESTION: I have a plain oak table and chairs that I would like to finish black in such a manner that the grain would

To produce best results, prepare the bed by mixing at least one third part of peat moss with good loamy soil and sand. At the base of the hole or bed, put a three-inch layer of gravel. If the soil is very heavy, drain it by placing a field tile or two out from the base.
Plant a magnolia no deeper than the soil mark on the stem would indicate to have been its previous planting depth. Its root run is extremely shallow. It thrives in full sun against a wall or in the open, but enjoys a little shade during the hottest part of the day. It needs shelter from the prevailing winds, so give it the advantage of a fence or hedge.

EXPENSIVE PLANT
Magnolias are slow growing and are usually propagated by budding or grafting. This makes them very expensive. Do not expect to get one for much under ten dollars - a price, though, that is small for a shrub that will give you a lifetime of beauty.
Only a few kinds are likely to be able to grow in the north. But what a glorious few! The soulangiana and all its color varieties bear large cup-shaped flowers that appear just before the leaves in late April or May. The color is usually creamy white on the inside and wine-red on the outside. The leaves are large, six to eight inches long, and heavily textured. One of its outstanding feats is to bloom when it is not more than two or three feet high. Three other varieties of this magnolia are the pure white 'Amabilis,' the deep almost purple 'Lenne' and the hybrid 'George W. Kern,' which is perfectly hardy at Montreal but not easy to get.
The beautiful star magnolia

(*Magnolia stellata*), which comes from Japan, is one of the most graceful and is just as hardy as the saucer magnolia. It forms a spreading shrub seldom more than five or six feet high in Eastern Canada. The pure-white flowers are delightfully fragrant and very early blooming.
The hardiest magnolia in the Arboretum of the Plant Research Institute is the tree magnolia (*Magnolia kobus borealis*). It is a little less showy than the others, but has pure-white flowers, which are produced in great profusion after the tree is about eight years old. It has the same clean sparkling leaves as the other magnolias and grows more like a small pyramidal tree.
The umbrella magnolia (*Magnolia tripetala*) has magnificent fourteen-inch white flowers but the leaves are so large (up to three feet long) that you cannot see the flowers unless you stand some distance away. As a bonus the flowers are followed by remarkably showy and beautiful red fruits that mature in the early fall. They look so much like a miniature bunch of bananas that many visitors to the Arboretum seeing the tree for the first time in fall are quite sure they have found a hardy banana tree.
(*Magnolia acuminata*) also of tree-like proportions, is worth growing in a sheltered area for its fine foliage effect. Its flowers are not showy at all, but its cucumber like fruits have some ornamental value.

abilities of greater trade between Canada and Singapore. The five-man team, representing electrical, mining and engineering concerns in Ontario, is to visit Malaysia and Thailand later.
DEPUTY IN HOSPITAL
LONDON (Reuters) - Deputy Prime Minister George Brown, 52, entered hospital Friday for weekend observation on medical advice. A spokesman for his economic affairs department said Brown cancelled his engagements for three days and should be back at work by Monday.

Coming Soon To Charlottetown
MECHANICAL MAN CAR-WASH
A new, economical, exciting method in car washing equipment.
The world's only 75c fully automatic car wash franchise.
Washes - Rinses - Waxes - Dries and Undercoats your car in 3 minutes.
Operating 24 Hours Daily
Watch your local paper for opening dates featuring opening special rates.

HOW TO OBTAIN DESIGN BOOK

The latest design book entitled "101 Selected Suburban and Country Homes Designed for Canadians," is now available at the offices of The Guardian and The Evening Patriot for \$1, tax free. This new edition includes color selection, etc., plus over 100 popular new designs to choose from. Also included are full designs on how to order blueprints.

window pane, in a wood frame, several months ago. Now the putty is crumbling off. How can I correct this?
ANSWER: Dry wood in the window frame probably drew oil out of the putty. Before applying new putty (after removing the present crumbling material), give the edge of the window frame a good, soaking coat of linseed oil, or oil paint. This will satisfy the wood's "thirst" and it will not blot up the new putty's oil.

QUESTION: I have a plain oak table and chairs that I would like to finish black in such a manner that the grain would

Only at Taylors . . .
TAMENTS
AT 25% SAVINGS DURING OUR BIG APRIL DIAMOND SALE!
Taylors
JEWELLERS
121 Grafton St. Dial 4-4283

We Trade
• Furniture
• Appliances
• Televisions
FIRESTONE
Home and Auto Ltd.
Dial 4-5547

NOTICE
Residents of P.E.I. who attain the age of 19 years must register separately under the Hospital Services Commission of P. E. I.
For information regarding Hospital Insurance Certificates, etc.
Address all correspondence to
HOSPITAL SERVICES COMMISSION
ELIGIBILITY SECTION
Post Office Box 4500
Charlottetown, P.E.I.

Progressive Conservative Nominating Convention
Of the 3rd District of Queens will be held in Mt. Stewart Memorial Hall Saturday, April 23rd at 8.30 p.m. Each poll is entitled to send 5 accredited delegates. Rev. David MacDonald, MP, guest speaker.
EVERYONE WELCOME
ARTHUR BROWN,
President of 3rd District Queens Progressive Conservative Association

ZELLER'S **VALUES WORTH SHOUTING ABOUT!**

SPRING COAT
S-P-E-C-T-A-C-U-L-A-R
QUALITY TAILORING, EXCITING FASHION DETAILS'

Fine fabrics include all wool basket weaves, flannels, camel types, novelty surface interest fabrics, Orlon knits. Watch for new fashion details: snappy styles for the young crowd sophistication for the more mature woman. Double-breasted fronts, low waists, belt effects, fine detailing found in higher-priced coats!

Tweeds, solids, fancies in an exciting palette of spring's light-and-bright shades. Petites' sizes 5 to 13, Junior sizes 7 to 15, Misses sizes 10 to 20, Young Matrons sizes 16½ to 24½ in the group. Not all sizes in each style and colour.

COAT VALUES TO 18.99	COAT VALUES TO 26.99	COAT VALUES TO 29.88
ONLY 9.97	ONLY 14.97	ONLY 19.97

BE EARLY FOR THE BEST CHOICE! BE SMART...CHARGE YOUR PURCHASE AT ZELLER'S!

CHARLOTTETOWN ZELLER'S RETAILERS TO THRIFTY CANADIANS

See ZELLER'S Selection of Merchandise For The GO-GO SET Bellbottoms, Shells, Skirts, Hose.