

WOMEN

Tuesday, Nov. 22, 1955 The Guardian Page 9

MRS. GORDON MACMILLAN

A COUNTRY GARDEN

I offer thanks for just familiar things:
The ruddy glory of the sunset sky,
The shine of firelight as the dusk draws nigh,
The cheerful song my little kettle sings;
The woodland music of my giant pine,
The last sweet tokens that my garden yields,
The mellow tints upon the Autumn fields,
The far-off misty mountain's purple line;

The sense of rest that home so surely brings
The books that wait my pleasure, true and fine,
Old friendships that I joy to feel are mine—
I offer thanks for just familiar things!

—Thorn.

In November we are very thankful for homes, books, and friends by the fireside in the longer evenings. If we have been out in the garden on the sunny days planting Tulips and other spring flowering bulbs the warmth of the home is doubly precious. Any time this month and even the next month is the proper time for bulb planting before the hard frost comes along.

There are several methods of planting bulbs and success is possible with any of them as I have tried them all—Lifting out the soil to a depth of about six inches and planting the bulbs right side up (the pointed end of bulb) in long drifts and then replacing the top soil is the better way.

If the drainage is good and it should be, there is not any need for a covering especially when some snow lies over the borders. All gardening is easy, but bulb gardening is the easiest of all if a few necessary rules are followed and drainage is the most important.

If the soil is good for vegetables then spring bulbs should grow well in it. A heavy clay will be improved with the addition of sand or peat moss. Each year I try to better the soil before planting. Of course fresh manure is never used but a well-rotted compost is especially good when incorporated in the soil.

To have the most delightful spring garden some thought is necessary to the arrangement of the bulbs and the carpet of flowers which will be blooming at the same time. For-get-me-not is a beautiful blue with many of the colorful Tulips and other spring flowering bulbs. Planted now or very early in the Spring they will make the garden lovely for weeks. Violas and pansies, carefully selected for color will also enhance the bulb garden rather than when there is nothing but the bare tulip stalk.

Planting the bulbs with a good background is necessary and flowering shrubs blooming at the same time and hedges and specimen evergreens bring out the beauty of all flowers including the spring bulbs.

So, plant where your bulbs will give you most attractive results. It does not matter too much whether you can only have two dozen making a jumbled effect, so the yellow tulips will all be planted together with a carpet of the blue for-get-me-not under the apple Tulips or two thousand bulbs if

you get the beauty from them that it is possible to obtain with careful placing in your garden picture.

In the centre bed with the bird-bath a planting of the Cottage Tulip named Marjorie Bowen will be made this week if all goes well. This Tulip is buff and salmon in color, a most unusual color and long-lasting, so that late garden visitors will see some of the beauty of the spring garden.

MASSED COLOUR

From my experience, the plantings of one color or colors is more attractive than a few of one variety here and another variety there, trees in fragrant bloom.

The Breeder tulips in shades of wine, bronze and purples will be planted near the garden of shrubs with the new leaves in the same shade making a lovely corner. Lavender tulips with the evergreen white Iberis makes a good combination and when thought is given to the color and design in gardening there is much more satisfaction each year when everything the gardener has learned through the years is applied to the coming year.

Tulips contribute colors of rare quality to the home grounds at a season when color is most welcome. Use them in groups of six or twelve to make spring gay around the garden gate, steps, bench and terrace. They are unsurpassed for balanced color arrangements in special gardens and in drifts and groups in the mixed flower border.

It is not too late to obtain spring bulbs of different varieties and plant them up until heavy frost. Much garden work can still be done on the sunny days, especially in the mornings and think of the happy anticipation there is all through the winter months when we think of the lovely spring garden we will have.

One night of frost and only the hardiest flowers bloom, the polyantha roses, garden Chrysanthemums and fragrant stocks in mauve and white. Some others will be good again if the weather is mild and the Iceland Poppies are blooming in a deep orange with tall willow stems.

If those had never been My eyes could dream them up: Carnation, rose and marigold The lily's starchy cup;

But they were here just yesterday, A rainbow on the lawn, A rainbow with sweet fragrances— A frost and they are gone.

But Keats writes:
Shed no tear! Oh shed no tear!
The flower will bloom another year
Weep no more! Oh weep no more!
Young buds sleep in the root's white core.

We gardeners have a wonderful time at this season of the year reading of other gardens in many countries and our own Public Library contains many books on all



JERSEY JOY

Wool jersey, so light yet so cosy, drapable, dramatic, stars this season in many beautiful suits and coats. Pretty as a picture, comfortable as an old shoe, as smart as one could desire is this wonderful wool jersey

cape collar suit designed by the talented Bonnie Cashin. We can see this suit going through the season on its own, with furs and under a coat. And it's right always because it is as comfortable and practical as it is attractive.

garden subjects.

RIBBON WALL

In continuing our review of some of the English Gardens opened to the public and described by Eric Parker in his book *Surrey Gardens* we read about West Horsley Place.

Ribbon wall—What does it mean? What is a "ribbon wall"? When we visited West Horsley Place it was our good fortune to be shown the features of the garden by its owner, the Marchioness of Crewe, I had no idea what a ribbon wall was or could mean. Then I set eyes on a wall unlike any other, and have been wondering ever since how or why it ever entered anybody's head to build bricks into such an extraordinary pattern.

Before coming to the wall itself, we found ourselves looking at other features of the house and garden. Under each wing of the long house front he will see a solid red brick dog kennel, and will wonder what kind of owner built it, and for what kind of dog. Then on the far side of the house, which faces south-east, he will walk under the branches of a centuries-old mulberry tree, and perhaps may ask himself what is the best way to cook mulberries. And then, by other orchard paths, we will come in sight of the ribbon wall.

It forms the northern side of a four-walled garden, cherries, plums, pear trees climb the walls, which surround a mown lawn, edged, when I saw them in July, by the finest dahlias, scarlet, mauve, yellow, dark red that I had seen all that summer.

But the wall took the eye more certainly than the dahlias, and later that afternoon, at our host's years.

kindly suggestion, we found our way round to the far side, and could look at it without its clothing of fruit trees. It is some ten feet high, and runs, or rather wriggles, east and west in the shape of seven s, even as if the serpent were unable to find his way into the Garden of Eden.

It is on the west side of the house indeed that you will find an orderly planning of space and as varied a scheme of colour as a gardener could hope to see in an English summer. From the house runs a long grass path, dividing four separate enclosures, two on either side, of flower bed and turf. Here snapdragon contrasts a dozen hues with the pinks and crimsons of Poulson roses; there, lavender scents the air opposite phlox, carnation, lily.

But you will be taken in thought from tree and blossom, to bricks and mortar, to the building of the house itself. It is for historians, rather than writers of the lay-out of gardens, to trace the supposed foundation of the house by Sir Anthony Browne, husband of the fair "Geraldine", of whom, possibly, the Earl of Surrey wrote his poem: here it is enough to chronicle traditional association with royalty in King John and the certainty of Dutch influence in the days of William and Mary. Of such possibilities argument and discussion fade from conversation in the charm and atmosphere of the building itself, the grace of patterned garden and water-lilies white and crimson under its walls.

EARTH'S AGE

For the oldest rocks in the earth's crust scientists now give an age estimate of 3,500,000,000 years.

Return To Elegance Seen In New Bedroom Decor

The living room area may be casual, happy-go-lucky, furnished for fun and a varied round of activities; but if furniture purchases are any criterion, luxury is returning to the bedrooms.

Recent trends seem to indicate a decided swing towards bedrooms that have a touch of elegance and graciousness. The hard, prim, functional look is on the wane. Color schemes are really lovely and there are new and charming accessories that reflect a gracious setting.

CLUTTERED LOOK

Also, there is a decided tendency to get rid of the cluttered look in the bedroom. Fewer pieces of furniture lend an air of spaciousness, one of the prime requisites for elegance.

The stores report a demand for, of all things, canopy beds. Obviously, they have always been in style for Provincial and Early American rooms. But now, in streamlined form, they are appearing in contemporary settings with attractively tailored canopies in a variety of beautiful fabrics and neat, clean lines.

Another touch that has moved out of de luxe settings is the coupling of twin beds to a single wide headboard. This gives the illusion of a double bed but provides the sleepers with the greater individual comfort of separate beds. One large, well-designed spread, interesting in fabric and color scheme, adds the luxury note to this convenient arrangement.

GROWING POPULARITY

Today, everything is super or king-size, so we aren't all astonished to note the growing popularity of the new super size bedding—another page taken from the book

of luxury. And while many of us would like to dash out and treat the household to king-size beds, it just isn't feasible. So how about converting regular beds to that new size?

There's actually nothing complicated about it. A pair of extenders attached to the bed rails will lengthen them enough to take super size bedding. They slip into place in a matter of seconds.

Made of metal, the extenders come in three lengths—6, 8, and 10 inches—and are finished in all the wanted popular wood tones. Most furniture shops and bedding firms carry them or would, no doubt, order them for you.

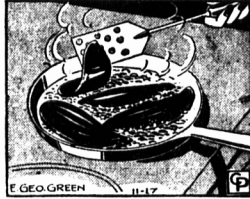
Words Of The Wise

That error is most dangerous which has a great deal of truth mixed with it. —(Sidney Smith)

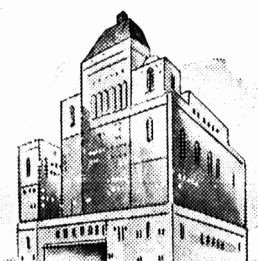
REALLY SALTY

Waters of Great Salt Lake in Utah have about six times as much salt content as the ocean.

Wife Preservers



When you are cooking sliced liver in bacon fat, turn often until brown. Do not over cook liver as that toughens it.



At the stately Royal York they serve famous Chase & Sanborn

in the palatial dining rooms of Toronto's loyal York Hotel, a faultless cuisine daily meets the challenge of an international reputation and important clientele. The enjoyment of gracious dining is heightened by a coffee of rare distinction... Chase & Sanborn.

Your family, too, will find supreme satisfaction in the costly aroma and flavor of this matchless coffee. Why not serve delicious Chase & Sanborn at home!



More fine hotels and restaurants throughout Canada serve Chase & Sanborn Coffees than any other brand.

live and breathe in beauty

in new Sarong by **GOthic** bra

Fashioned in elastic and nylon to give you natural uplift... perfect fit... the smoothest silhouette! New Sarong Bra adjusts itself to every move you make... fits you up and down and all around... actually seems a part of you! Washes easily, dries quickly, needs no ironing. In purest white, BANDEAU and LONGLINE styles, in junior, medium, full.

Sarong by **GOthic** girdle

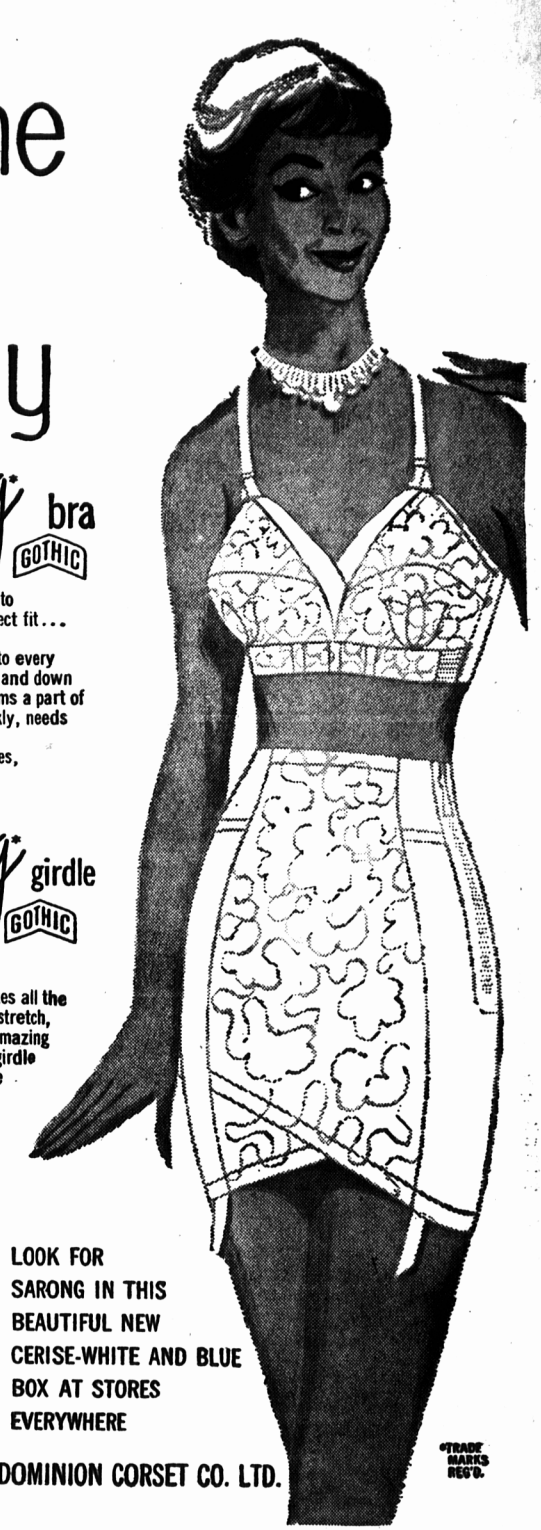
The criss-cross girdle that slims as it trims! Exclusive criss-cross front makes all the difference! You sit, walk, run, stretch, bend—in controlled comfort. Amazing Sarong is the perfectly-fitting girdle for every figure type. In a wide range of styles and sizes.



LOOK FOR SARONG IN THIS BEAUTIFUL NEW CERISE-WHITE AND BLUE BOX AT STORES EVERYWHERE

DOMINION CORSET CO. LTD.

SARONG — THE ANSWER TO A MORE BEAUTIFUL FIGURE



Patients Cured By Hypnotism

Canadian Dr. Philip Magonet is putting hypnotism to scientific use in treating patients in his Harley Street, London, office. Painless childbirth, the cure of asthma and adjustment of many nervous disorders are some of his most recent successes. He operates while patients are under hypnotic sleep and can even effect cures by telephone. Story in The Standard this week. Get The Standard — on sale now, complete with magazine, 12-page novel and 20 pages of comics. Only ten cents.

The Standard

FAST RELIEF FROM PAIN OF NEURALGIA

When you suffer from pain of Neuralgia, Headache or Muscular aches you want relief and you want it fast... That's Aspirin! A tablet starts disintegrating almost the instant you take it—starts to relieve that pain almost instantly!



B.F. Goodrich STORMY WEATHER PROTECTION



Styles and models for all the family... for every occasion!



FURLOSH

Deluxe all-rubber, laced overshoe with motion for cuff in smart plaid. Warm fleece lining. Built-in felt insole. Choice of black with grey trim and brown with brown trim in low and high heel fittings.



NYLFUR

Deluxe NYLON overshoe with warm fleece lining and smart moose trim. Front lacing gives snug, cozy fit. Built-in felt insole. Inside fur-protector collar prevents marking hose. Ladies sizes in black with black trim and brown with brown trim in low and high heel fittings.



HIGHLAND

Deluxe all-rubber "Genuine-Zipper" overshoe. Smart printed plaid design upper with concealed front slide fastener. The HIGHLAND assures winter comfort with its warm fleece lining and built-in felt insole. Choice of black with grey trim and brown with brown trim in low and high heel fittings.



WEATHERBOOT

All rubber pullover boot with warm fleece lining. A popular winter boot with men, boys, juniors, and children. Adjustable buckle strap for easy on-and-off. Name tops on back of strap. Non-skid sole. Mens' and boys' sizes only have protective toe-guard. Brown only.



RAINSTEPS

New popular B. F. Goodrich Rainsteps, lightweight plastic styled footwear to keep feet snug and dry. Molded from soft, durable plastic. Rainsteps never become brittle. Really fit, made in right and left foot sizes. Non-skid outsoles. Clear and solid colors. Styles for low and high heel shoes. Sizes for children, mens and women.



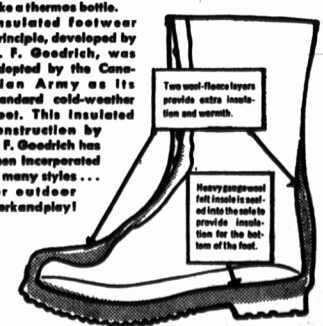
COMMUTER

Men's flexible feather-weight all-rubber overshoe, 12" high. Stretchable net lining for snug fit. Can be worn over or under trousers. Bright black finish. Not shown is HILOSH with "Genuine Zipper" slide fastener.



B.F. Goodrich INSULATED FOOTWEAR

(Patents Pending) This amazing insulated boot defies sub-zero cold. An exclusive construction provides a sealed-in "dead-air" chamber that surrounds the foot to above the ankle... keeps cold out and warmth in... acts like a thermos bottle.



THE IDEAL BOOT FOR OUTDOOR WORKERS, SPORTSMEN AND THE WHOLE FAMILY

B.F. Goodrich WATERPROOF FOOTWEAR at your favourite footwear store

LePage Shoe Co. Ltd.

138 GRAFTON ST.

DIAL 4748

SUMMERSIDE

Sheen & MacInnis

YOUR FAMILY SHOE STORE

DIAL 8091

133 GRAFTON ST.

LePage Shoe Co. Ltd.

DIAL 4748

Tignish Co-operative Association

TIGNISH

PHONE 32

Mrs. Nellie Maillett

ST. LOUIS, P. E. I.

R. C. MacNeill

TYNE VALLEY

PHONE 31

St. Peters Co-op

ST. PETERS, P. E. I.