

Exciting fishing journeys available



Francis, No. 313390, 10.9 ton, 45 ft. long two trips daily, 7.30 p.m.—11.30 a.m. and 1:30 p.m.—4:30 p.m. Keith H., No. 310997, 9'22 ton 41 ft. long. Two trips daily: soft drinks aboard, tackle supplied, your fish made ready for the pan. Evening cruises at 6:00 p.m. Boats equipped with two way radio.

Fred Doucette, Master: Tel. 7-6. Cape Island Type Boat, Bonnie Lee I, No. 314459, 9 ton, 40 ft. long. Deepsea fishing, tackle supplied. Sight - seeing cruises. Archibald Hartling, Owner: Cape Island Type Boat, Ariel II, O.N. 310773, 38 ft. long, 7.52 tons. Deepsea fishing and sight- seeing cruises. Tackle Supplied.

COVEHEAD HARBOUR
John Myers, Master: Cape Island Type Boat, Janice D., No. 312774, 7.26 ton, 40 ft. long. 2 trips daily. Deepsea fishing, tackle supplied, sightseeing and moonlight cruises, soft drinks on board, private charter cruises on application. Office at Covehead Harbour.

Malcolm Allen, Master: Tel. 892-1100. (2) Cape Island Type Boat, Northern Queen II, No. 318946, 11 ton, 43 ft. long. Antia A. II No. 319600, 13.18 ton, 45.9 ft. long. Boats fully equipped for deepsea fishing and sight- seeing cruises, private charter- cruises. Fish dressed as desired. Our aim "to assure our passen- gers an enjoyable trip. Office at Covehead Harbour for informa- tion and reservations.

Emmett Robinson, Master: Cape Island Type Boat, C.L.M. No. 311122, 8 ton, 40 ft. long. Deepsea fishing and pleasure cruises, tackle supplied. Spin- ning rods and mackerel avail- able. Apply at Covehead Har- bour.

KINGS COUNTY
SAVAGE HARBOUR
Fred Moser, Master: Tel. M.

LePAGE'S

Your Holiday Will Be More Fun If Your Feet are Comfy!



And we can fit you, and your family, with shoes that guarantee comfort. Choose from the largest selection of casuals east of Montreal. All the famous names you like . . . i na complete size range. See to- day!

LePage Shoe Co. Ltd.

"The Home of Good Shoes Since 1920"
133 Grafton St. Charlottetown Dial 4-4748



ALL DEEP SEA FISHING BOATS MUST PASS RIGID INSPECTIONS

Deepsea fishing can be the most exciting and rewarding part of a vacation for those who love the sea and possess a spirit of adventure.

In Prince Edward Island salt water fishing is a sport for the whole family. Schools of cod, fish, mackerel, haddock and halibut abound only a few miles off shore. The experienced fisherman can take you and your party to the choice fishing grounds in an hour or less.

Many tourists who have never gone out on a fishing expedition before very often return with a boatload of fish. Some are taken back to the hotel or cottage and are eaten fresh from the sea. The others are left with the fisherman who delivers them to a nearby factory for processing. There is never any waste.

NO LICENCE NEEDED

Another feature of the fun of deepsea fishing is the fact that you do not require a licence to enjoy this excellent recreation. All equipment is supplied by the captain of your boat. Most fishing is done with hand lines but you can also take along your fly rod for a go at the mackerel—a fighting game fish belonging to the same family as the tuna but weighing anywhere from a pound to five pounds!

When you choose a skipper from the list below you are getting an expert seaman. You are also getting a boat that has passed a rigid inspection and contains all safety equipment necessary as well as certain other equipment installed for your comfort and pleasure. Proper toilet facilities are available on the boat.

Remember — your captain of the boats listed below have passed examinations and possess a temporary master's certificate issued by the Federal Department of Transport, for your own protection. Ask the master of the boat of your choice to show the necessary credentials —master's certificate and the current year's boat inspection certificate.

PRINCE COUNTY
ALBERTON HARBOUR
Cecil Hutt, Master: Tel. 58-31, Cape Island Type Boat, Sea- worm II, No. 35-1610, deepsea 40 ft. long. Two trips daily, sightseeing cruises of bays and rivers in area, Coffee available on board. Private charter trips on request.

QUEENS COUNTY
STANLEY BRIDGE WHARF
Thomas Gallant, Master: Tel. 4-6, Cape Island Type Boat, Bonny Ann, No. 319329, 10.1 ton, 40 ft. long. Two trips daily. Tackle and bait supplied. Pleasure cruises around New London bay and rivers. On main highway between Cavendish and Borden ferry.

RUSTICO HARBOUR
Alden Doiron, Master: Tel. 21-4-6, Cape Island Type Boats, (2) Cape Island Type Boats, Northern Queen II, No. 318946, 11 ton, 43 ft. long. Antia A. II No. 319600, 13.18 ton, 45.9 ft. long. Boats fully equipped for deepsea fishing and sight- seeing cruises, private charter- cruises. Fish dressed as desired. Our aim "to assure our passen- gers an enjoyable trip. Office at Covehead Harbour for informa- tion and reservations.

WELCOME TO P.E.ISLAND

May your Island visit be a pleas- ant one. While in Kensington we invite you to visit us for footwear, groceries, Wesco Paints, hard- ware, dry goods.



G. L. MacKENZIE CO.

Kensington P.E.I.

TWO STORES TO SERVE YOUR VACATION NEEDS



OPEN 7 DAYS A WEEK UNTIL 10 P.M.

A registered pharmacist is on duty to compound your prescriptions . . . a qualified cosmetician can pre- scribe for your particular beauty needs . . . and of course, you will find all the latest items you expect in an up-to-date drug store.

45 St. Peters Road — Parkdale

Our Welcome Mat Has Been Out For Over 150 Years



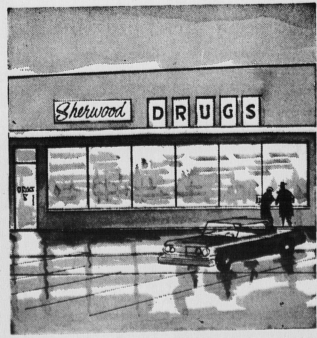
Mr. Earle C. Baker President

We are located across the street from the Fathers of Confederation Memorial Buildings, and we would like you to visit us also . . . one of Canada's oldest drug stores . . . See our hand carved oak fixtures . . . a REAL drug store in every sense of the word . . . a drug store which has kept pace with the changing times . . . here you'll find all the modern requirements of any tourist, regardless of what you need . . . we've been serving visitors for 150 years, and we look forward to extending you a warm welcome.

SUNDRY AND BABY DRUG NEEDS

Famous name cosmetics, perfumes and colognes are a specialty . . . while chocolates, books, novelties and sundry drugs and baby needs are including in our attractive display. Here too you'll find many gift and souvenir ideas.

located in the Sherwood Shopping Centre, St. Peters Road



PARKDALE PHARMACY SHERWOOD DRUG SUNDRIES

"Two Stores To Serve You Better"

HIGES DRUG Co. Ltd.

Established 1810
Corner Queen & Grafton Streets Charlottetown