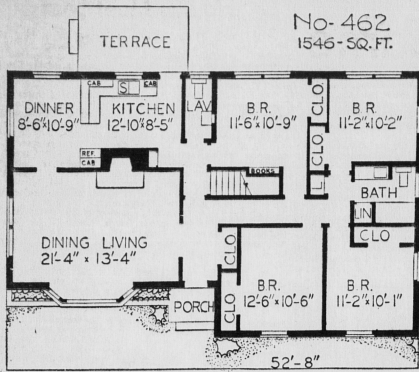


No. 462
1546-SQ. FT.



Quite often a four bedroom home becomes too large after the children are grown and away from home. Such is not the case here. You will notice that the rear center bedroom can easily be converted into a TV room if three bedrooms is all you require. Extra lavatory is conveniently located.

Entry hall provides direct approach to all major areas of the home. The living area is spacious with a charming bay and wide windows providing ample light and ventilation. Separate dining area and functional kitchen completes the layout of this well planned Brick Veneer home. It would be quite easy to add an attached garage. This would entail eliminating the end diner window but to offset this, the rear one could be made larger.

HOW TO OBTAIN DESIGN BOOK

The latest design book entitled "Canadian Guide to Home Planning and Design" is now available at the office of The Guardian and The Evening Patriot for \$1. tax free. This new edition includes information on financing in detail, landscaping, color selection etc., plus over 100 popular new designs to choose from. Also included are full details on how to order blueprints.

MORE NEWSPRINT

MONTREAL (CP) — Shipments of newspaper in October totalled 661,206 short tons compared with 638,160 short tons in October, 1963, the Newspaper Association of Canada said Friday. Thursday, the association erroneously reported that shipments in October, 1964, totalled 161,206 short tons.



Everything from the roof to the foundation . . . to add to home comfort, beauty and value!

**Don't Wait For Spring
DO IT NOW!**

While men and materials are readily available

You get the most for your dollar now when skilled men and materials are available. In addition to interior renovations to homes, plants and businesses, there are many other things that can be done to advantage during the winter — maintenance of lawn garden equipment, electrical appliances, outboard motors and automobiles, as well as drycleaning of drapes and rugs, replacement of upholstery and many more. Why wait for Spring?

DO IT NOW!

This message published in the interest of the Winter Works Program by the following firms:—

- BATT and MacRAE LTD.**
91 Euston St. Dial 4-6537
- MacINNIS PHOTO and HOBBY**
111 Kent St. Dial 4-9153
- PALMER ELECTRIC LTD.**
96 Fitzroy St. Dial 4-8543
- KING'S BUILDING MATERIALS**
Southport Dial 4-4830
- CHANDLER BROS. LTD.**
1 Plywood Place Dial 4-6557
- TURNER FARM EQUIPMENT**
68 Fitzroy St. Dial 4-7349
- ROGERS HARDWARE CO.**
137 Queen St. Dial 4-6501

- M.F. SCHURMAN LTD.**
Longworth Ave. Dial 4-7515
- DOUGLAS BROS. and JONES Inc.**
Kent St. Dial 2-1234
- ISLAND GRILL**
162 Queen St. Dial 4-8228
- VERE BECK and SON LTD.**
217 Elm Ave. Dial 4-6933
- MOORE and McLEOD LTD.**
119 Queen St. Dial 4-6541
- IRA YOUNKER**
General Contractor
St. Peters Road Dial 4-5954
- LePAGE SHOE CO.**
Grafton St. Dial 4-4748

SCHURMAN'S

SEE - SHOP - SAVE

For Your Rumpus Room or Attic Remodelling We Have a Full Range of . . .

PRE - FINISHED PLYWOODS . DECORATIVE WALLBOARDS

SPECIAL NEXT WEEK ONLY

Wildwood Mahogany Prefinished

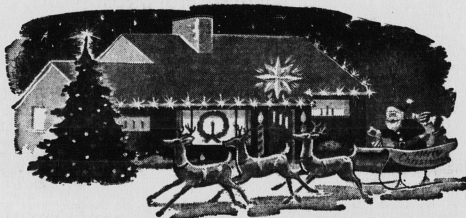
PLYWOOD

- 3/16" x 4' x 8'
- Toasted Finish
- Vee Grooved
- Reg. 7.45 per sheet

EXTRA SPECIAL **6.39** PER SHEET



Beautifully Colored Life Size Plywood Cut - Outs



- Santa Clause
- Sleights
- Reindeers

and
We have the Plywood to Mount them

BE SAFE!

A "BURGESS"
FLASHLIGHT

One for the home—and one for the car
—with spare batteries of course.

THINK

of a practical gift for the man about the house.

- ELECTRIC DRILL
- SANDER
- JIG SAW

By Black & Decker

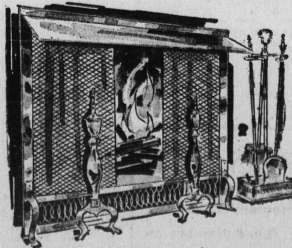
ITS HERE!



- And we have the answer for it.
- Snow Shovels
 - Snow Pushers
 - Ice Scrapers

Give Your Home A CHRISTMAS PRESENT ..

- Lazy Susan
- Medicine Cabinet
- Adjustable Shelving
- Mail Box
- Range Hood
- Ventilating Fan



Hearth-Warming Accessories

**Fireside Evenings are Here!
Dress Up Your Fireplace**

Brooks Fireplace Furnishings in Stock Now.

SCHURMAN'S

Kensington
Broadway
267-3130

Summerside
Eustane Street
436-2265

Charlottetown
112 Longworth Ave.
894-7315