

# Atlantic Shuffle For Two Canadian Infantry Brigades

EDMONTON (CP) — The 1st and 2nd Canadian Infantry Brigades have been packing for a move that will transport between continents 18,000 persons—a number equal to the population of Fredericton.

The brigades sail shortly—the 1st from Europe to Canada, the 2nd from Canada to Europe—and the army says they'll be settled in time to hang their stockings for old St. Nick.

For several weeks beginning Sept. 29, the Atlantic will be crowded with 10,000 Canadian soldiers and 8,000 dependents as Canada rotates her North Atlantic Treaty Organization forces in Europe.

**TWO-YEAR STINT**

The 5,000 men of the 2nd brigade, many of whom saw action during the Korean War, move from Canada to Soest, in West Germany, for a two-year hitch as the Canadian NATO army force.

The 1st brigade, with an equal number of men who have served

under NATO command in Europe for two years, returns to Canada as this country's mobile striking force, a role held for the last two years by the 2nd brigade. The battalions returning from Germany were the first Canadian units to fight in Korea four years ago.

Wheels have been turning for months as the Canadian army prepared for the change of roles of the two parachute-trained brigades of the 1st Canadian Infantry Division. The 3rd brigade remains in Canada.

An advance party was sent to Germany several weeks ago to take stock of equipment being turned over to the 2nd brigade and generally prepare for arrival of the main body of troops.

**FAMILIES GO LATER**

The men of the 2nd will travel to Europe alone, their wives and children following about two weeks later. About 3,000 dependents are making the trip.

Once at their stations in the

Soest area some of the men will take over furnished married quarters provided by the Canadian government and allotted before the brigade leaves Canada. Their own furniture will be stored at government expense in Canada. Others will have to find their own billets.

An army spokesman at brigade headquarters here said the plan is to allow the officers and men to move in and have time to prepare the welcome mat for their wives and children.

The movement schedule allows plenty of time for the men and dependents to be well settled before Christmas.

In the case of the 1st brigade's return to Canada, the army will—wherever possible—let the men, their wives and children travel together. Nearly 5,000 dependents are returning.

The spokesman said this plan was worked out with the view that returning men will go on 30-day leaves and will have places to stay

when they arrive home.

**SAIL FROM QUEBEC**

The 2nd brigade sailings start from Quebec City Sept. 29 when brigade headquarters units and three service units, totalling 650 men, will embark. The 1st will start moving out of Germany as the 2nd arrives.

The second draft—800 officers and men of the 1st battalion, Royal 22nd regiment, and the advance party of the 1st field squadron, Royal Canadian Engineers—will leave Oct. 5.

On Oct. 11, some 600 members of the 1st battalion, Princess Patricia's Canadian Light Infantry, will leave, and three days later a draft of 875 men embarks—including a company each from the PPCLI, Royal 22nd and 1st battalions, Royal Canadian Regiment, A-squadron of the Royal Canadian Dragoons and a battery from the 4th Field Regiment, Royal Canadian Horse Artillery.

Four more ships will follow Oct. 26, Nov. 1, Nov. 8 and Nov. 12, carrying 1,964 officers and men of the brigade's remaining arms and service units.

Six Atlantic crossings will be made for the 3,000 wives and children going to Europe and nine vessels will return men and dependents of the 1st brigade.

**VETERAN OF NORMANDY**

The 2nd brigade is under Brig.

Roger Rowley, DSO, 40, of Ottawa, a veteran of the Normandy fighting during the Second World War, who took over as commander in December, 1954, following study at the Military Staff College and Imperial Defence College in England.

Brigade units are scattered across the country and officers and men began in mid-September returning to home stations from 30 days' leave for embarkation concentration.

Brigade headquarters are in Edmonton. The 1st battalion, PPCLI, under command of Lt.-Col. Thomas DeFay, has its home station at Calgary. The 1st battalion, RCR, with its home base at London, Ont., is under Lt.-Col. T. McCoy, while Lt.-Col. B. J. Guimond commands the 1st battalion, Royal 22nd, based at Valcartier, Que.

The 4th field regiment, RCHA, is under Lt.-Col. T. R. Gemmill and based at Camp Utopia, N.B. Maj. A. E. Ballantyne commands the 1st field squadron, RCE, at Chilliwack, B.C., and A-squadron of the Dragoons is under Maj. G. Fawcett at Petawawa, Ont.

The 2nd battalions of the PPCLI, RCR and Royal 22nd, which make up the main body of the 1st brigade under Brig. W. A. B. Anderson, 40, of Montreal, will return to their units' home stations following the return to Canada. The 2nd battalion PPCLI, will move from Calgary to Edmonton sometime in 1956.

**HUNTERS MISSING**

ST. TITE, Que. (CP) — Search was started Tuesday for two 20-year-old youths missing since the weekend on a duck-hunting trip to

nearby Lac Roberge. Jean Denis St. Arnaud of Cap-de-la-Madeleine, Que., and Jean-Guy Veilleux of Montreal, left Saturday for the lake about 50 miles north of Trois-

Wednesday, Oct. 5, 1955 The Guardian Page 9

Rivieres. They were to have returned here Sunday evening, but Westminster Hall at London, England, was built for King William Rufus in the 11th century.

It's easier to paint with Super Kem-Tone

It's easier to clean up after!

paint it yourself with **SUPER KEM-TONE**  
The Superior Latex Wall Paint

- Ready to use.
- Glides on like magic with "Roller-Koater" or brush.
- One coat covers most surfaces including painted walls and wallboard.
- Dries in a matter of minutes without lumps or streaks. Furniture can go back the same day.

- Super Kem-Tone washes off Roller-Koater or brush under the tap.
- Spots on floors or woodwork vanish with a wet cloth.
- 22 beautiful ready-to-use colors.

Ask Your Dealer About THE NEW KEM TINTING COLORS More Than 100 Beautiful Shades To Choose From

**RICH AS VELVET . . . TOUGH AS RUBBER**  
One of the famous Kem Paint Products

# THURSDAY SHOPPING NEWS

## At EATON'S You Get These LOW PRICES on ELECTRICAL APPLIANCES...

**PLUS** the accommodation of EATON Services and the All-Out Protection of the Famed EATON Guarantee, "Goods Satisfactory or Money Refunded!"

**STORE HOURS:**  
MONDAY TO FRIDAY  
9 A. M. to 5:30 P. M.  
SATURDAY  
9 A. M. to 12:30 P. M.  
Telephone: 6593

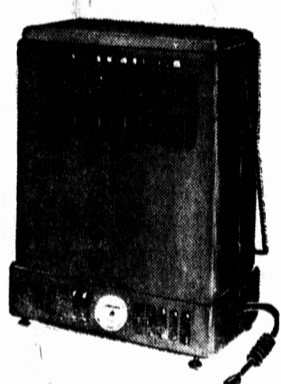
**WELL KNOWN MAKES! A SPECIAL OFFER! NOTE THE SAVINGS! YOUNG MARRIEDS! BUY YOUR APPLIANCES NOW AT EATON'S WHILE THIS OUTSTANDING OFFER LASTS! HERE'S YOUR CHANCE TO SAVE DOLLARS!**



**FAMOUS "SUNBEAM" MIXMASTER**  
ORDINARILY 53.25

One of the best known makes of electric mixers. Fast, powerful with fingertip speed selector for nearly every need. Bowl turns to assure even mixing. Automatic beater release. Gleaming white finish with black trim. Two mixing bowls.

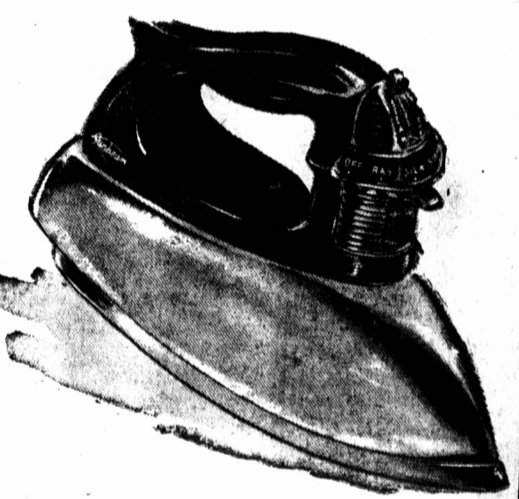
NOTE THE LOW PRICE  
EATON SPECIAL PRICE EACH **39.89**



**"TUDHOUE" ELECTRIC SAFETY HEATER**  
ORDINARILY 15.95

Prepare now for the cold weather! This safety heater incorporates a non-glowing, woven electric element. Just plug it in wherever needed for extra warmth this winter. Buy now and save!

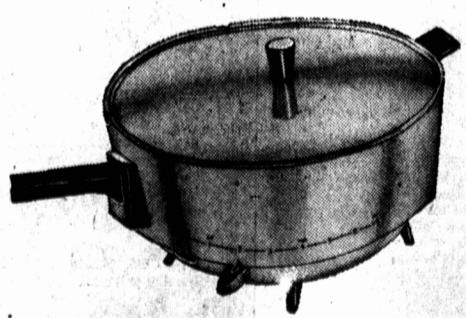
EATON SPECIAL PRICE EACH **10.99**



**"SUNBEAM" STEAM OR DRY IRON**  
ORDINARILY 21.95

Big Savings Are Yours. Buy Now!  
Steams longer and yet is lighter than most steam irons of this type. Practical, a "must" for nearly every home. Smartly styled with gleaming black handle. Finger-tip temperature control.

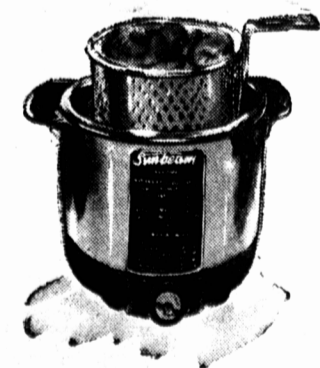
EATON SPECIAL PRICE EACH **16.49**



**"SUNBEAM" DEEP FRYER AND COOKER**  
ORDINARILY 34.78!

FOR FAMILY COOKING  
Extra large family size, for cooking, frying, roasting, stewing, baking, etc. Fully automatic, heats instantly and maintains constant heat. Chromium plated, black plastic handles.

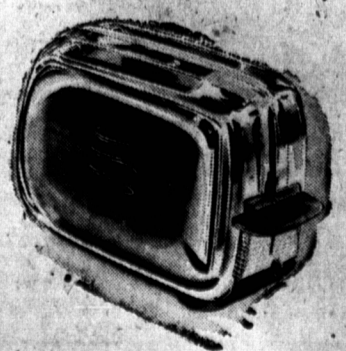
EATON SPECIAL PRICE EACH **24.99**



**GSW ELECTRIC KETTLES**  
ORDINARILY 12.95

WITH SAFETY CAP OVER SPOUT—  
trite kettle. Specially designed cap over spout prevents steam from rising to handle, when pouring. Gleaming chromium plated finish with black handles.

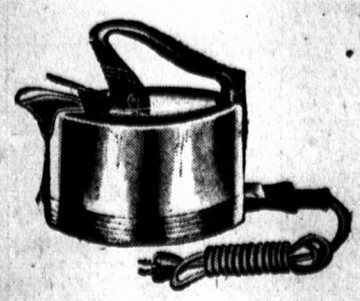
EATON SPECIAL PRICE EACH **8.99**



**GENERAL ELECTRIC AUTOMATIC TOASTERS**  
ORDINARILY 23.95 . . . SAVE AT EATON'S

Automatic two slide toaster with toast selector to give the type of toast you want. Finished in gleaming chromium plate with black plastic handles. Cord attached.

EATON SPECIAL PRICE EACH **18.99**



**"WESTINGHOUSE" MENU MASTER ELECTRIC GRIDDLE**  
ORDINARILY 17.95

Thermostat prevents overheating. Homemakers will love this versatile table appliance. About 8" x 15" top. Grills, fries, toasts . . . for pancakes, chops, bacon, and eggs, etc. Baked white enamel finish.

EATON SPECIAL PRICE EACH **11.99**

**NO DOWN PAYMENT FOR A LIMITED TIME MINIMUM PURCHASE 15.00**

**EATON'S**