

Campus Comment

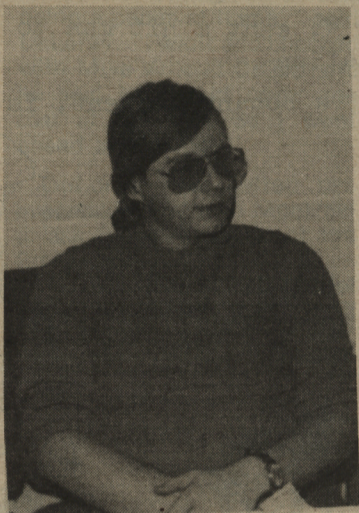
By Ann Higdon and Todd MacLaughlan

THE QUESTION: HOW MUCH DID YOU ENJOY REGISTRATION?



Mike M. Freshman

I really enjoyed registration. It was a chance, you know, to meet people that you know and to talk over what happened over the holidays. Standing in the lineups was the pits.



Peter "Cooch" D. Senior

I thought it was a real breeze. I paid my dues, got my slip of paper, and was out in about ten minutes. It was alright, very easy.



Karen J. Senior

I hated it. How could you enjoy it?

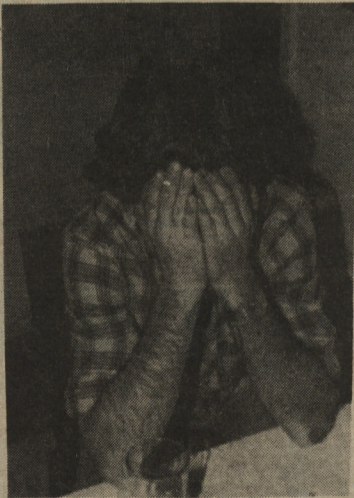


Jim W. Sophomore

Nobody can really enjoy registration, especially since it puts a big hole in the paycheck.

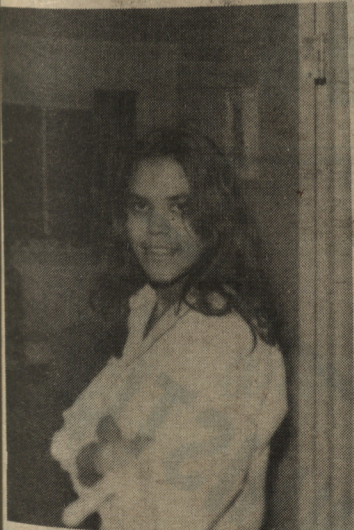
Nancy M. Junior

I enjoyed it all, except for paying the money.



Jane V. Freshman

I liked it. It's not bad, except that it's awfully slow. They could fix it better.



Wade W. Freshman

It was long, tiresome, and very boring, as usual. It wasn't that bad but they could probably spread it out over a few days or preregister and prepay mandatorily.

MPHEC RECOMMENDS \$ HIKES

JANUARY 4, 1980

The Maritime Provinces Higher Education Commission (MPHEC) today released its report "Financial Plan 1980-81". The report contains the Commission's financial assistance recommendations for Maritime post-secondary education institutions for the 1980-81 year, together with forecasts for 1981-82 and 1982-83. The recommendations have been submitted to the Council of Maritime Premiers.

The Commission recommends that general operating assistance to post-secondary education institutions be increased by 8.1% in 1980-81. In addition, it recommends that a 0.75% increase be provided in equalization assistance for institutions receiving a low level of support and that a 0.45% increase be provided in respect of expanded dental school facilities at Dalhousie University. The recommended increase is made with the expectation that institutions will find it necessary to increase tuition fees by a similar rate. The Commission forecasts general operating assistance increases of 9% and 8.5% for 1981-82 and 1982-83 respectively.

The Financial Plan also contains the Commission's recommendations for restricted operating assistance and capital assistance. The Maritime Provinces Higher Education Commission recommends that restricted operating assistance for equipment and renovations increase at the same rate as operating assistance. The MPHEC's capital assistance recommendations place emphasis on regional projects and renovation projects that will enable institutions to enhance the utility of existing space and facilities.

In support of the MPHEC's recommendations, the Financial Plan contains documentation on the current support levels for Maritime post-secondary institutions, the financial pressures facing institutions, projected enrollments, and the educational characteristics of the region's population. The Commission also emphasizes that its recommendations are considered the minimal requirements to meet the post-secondary education needs of the region.

The Commission expects the Council of Maritime Premiers to respond to its recommendations within the next two months.

Copies of the Maritime Provinces Higher Education Commission's Financial Plan 1980-81 are available at the Commission office, P.O. Box 6000, Fredericton, New Brunswick.

