



QUEEN'S PERSONAL PIPER

Pipe Major Andrew Pitkeathly, 38, has been appointed personal piper to Queen Elizabeth II, ending a month-long search for a man willing to fill the vacancy which was suitable to the Queen. Pitkeathly, whose job will include piping outside the queen's window each morning and perform at banquets, gets a rent-free home in addition to his salary in his new job. (AP Wirephoto)

NORAD To Compress Eight Regions To Six

By DAVE MCINTOSH
OTTAWA (CP)—North American Air Defence Command will compress its eight regions into six April 1, it was learned here. In 1961, the original 11 regions established under the joint Canada-U.S. command were reduced to eight. NORAD was set up in 1957. For RCAF Air Defence Command, the main difference will be that some operational orders will come from more distant points in the United States. For example, the present 25th NORAD region, which takes in British Columbia and western Alberta, has its headquarters at Tacoma, Wash. This region will be amalgamated with the 28th and the headquarters for the new western region will be at Hamilton Air Force Base in California. The northern NORAD region, which has its headquarters at North Bay, Ont., remains by far the largest division within the command though it will lose a northern chunk of the Prairie provinces to central region, commanded from Richards-Gebaur Air Force Base in Missouri. The northern region takes in the Canadian Arctic Archipelago, Yukon and Northwest Territories, eastern Ontario, Quebec and the Atlantic provinces. Populiquis—southwestern Ontario comes under the central region. The other three regions will be Alaska, which remains unchanged, southern U.S. and eastern U.S. The last excludes the northern half of Maine which comes under northern region, the only one commanded by a Canadian. Though NORAD did not state officially why the number of regions is being further reduced, the compression is believed part of the lesser emphasis being placed on anti-bomber defences.

Profit And Loss Yardstick Opposed In Rail Closing

OTTAWA (CP)—Profit or loss should not be the deciding factors in the abandonment of rail services, leaders of the international railway brotherhoods said in a formal petition to the federal cabinet. The petition asks the cabinet to reverse a decision of the Board of Transport Commissioners earlier this month that allowed the CPR to cancel its Dominion passenger train. It says the board's ruling was based on the "narrowed and confined guideposts" of the Railway Act and is devoid of reality because it does not take into account the public interest. The petition, prepared for the Canadian Railway Labor Executives' Association by lawyer Maurice Wright, asked for a hearing by the cabinet of an oral presentation of details behind its argument. The CPR originally sought to cancel the Dominion, its secondary Montreal-Vancouver passenger train, last September. After receiving complaints about the move, the board ordered that it be postponed pending public hearings. HELD HEARINGS Hearings were held in various cities along the Dominion's route in October and November. On Jan. 7 the board announced it would allow the cancellation and the CPR acted immediately to discontinue the service. The railway labor organization served notice last week that it would file an appeal against the board's ruling, which only the cabinet can reverse. The petition accuses the CPR of setting out to destroy transcontinental passenger service. "This was accomplished by reducing the standard of the Dominion... to a level which was simply insulting to the people of Canada and to such of its residents who were prepared to brave the vicissitudes of such an ordeal. "Passengers were deliberately deprived of sleeping and eating facilities while engaged in transcontinental travel." At the same time, fares were raised above the levels charged by CNR trains. "Having succeeded in its plan to drive passengers away from the Dominion, the CPR now claims that the resulting unprofitability justifies permanent discontinuance of the Dominion." The petition says the question of operating losses may be a prime factor in considering the abandonment of branch lines or commuter services but is totally inadequate in deciding whether half of a railway's transcontinental service should be withdrawn.

Public Housing Schemes Described Too Grandiose

OTTAWA (CP)—Less grandiose public housing schemes and incentive housing for servicemen were suggested by Robert McCleave (PC—Halifax) during the Commons' supply debate. The whole federal public housing scheme probably was being carried out on too grandiose a scale. Large areas of cities were being torn down at a cost of \$12,000 to \$15,000 a unit. Thus new dwellings probably were costing \$30,000 a family. The figures had become "rather fantastic." Mr. McCleave suggested more modest public housing scattered about a community. Turning to housing for serv-



Holman's P.B.I.

Aimed to Please and Save You Money! Today 'Til Saturday!

Valentine

Valentine's Day Monday, February 14th

VALUES

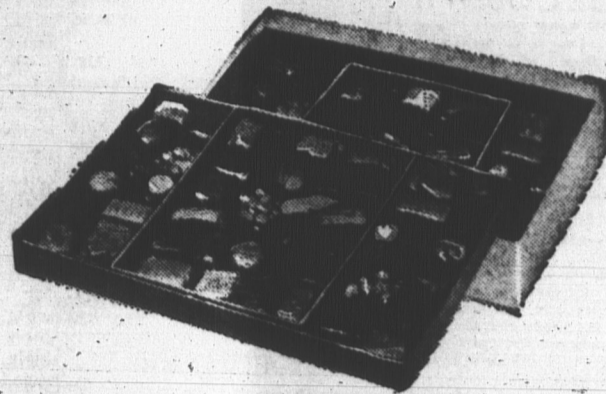
Specials For A Sweet Tooth!

Famous Rose Chocolates

Assorted flavours dipped in rich quality chocolate. A real buy at this price. Buy several 1-lb. boxes. Reg. 98c. Special **87c**

Luxury Brand Chocolates

Another favourite for gifts. Delicious dark centres. 1-lb. boxes. Reg. 1.45. Special **1.27**



"Happiness" Brand Chocolates

You'll love these... so will your Valentine! Assorted centres. 1-lb. boxes. Reg. 1.39. Special **1.23**



New! Just Arrived! Children's BALLET SLIPPERS

Perfect for beginners. With the interest in ballet being shown, be quick to order for your girl taking ballet. Sizes 8-3, girls: 4-9. Special **2.19**

Men's Jarman Shoes

Special clearance of these finely made shoes. Smartly-styled, crafted in Canada. Rich supple leathers, in laced and slip-on styles. Long-wearing genuine leather soles, rubber heels. Sizes 7-11 in this group. Reg. 19.95 pr. Special **14.97**

Ladies 'Kitty Kelly' Shoes

Special clearance of "Kitty Kicks". Quite a buy on these beautifully made shoes, comfortable to fit. In black or brown quality leather. In step-in or strap styles. Blush heels. Sizes 5 1/2 to 10 in the group. Reg. 9.98. Special, pair **7.97**

Buy Your Spring Paint Needs, Save

REGAL WALL SATIN

By Moore. Premium quality latex base. Dries in less than one hour, easy to apply with brush or roller. 20 lovely pastels and white. Reg. 2.98. Special, qt. **2.37**



DULAMEL PAINTS

By Moore. A semi-gloss enamel that dries hard overnight. Ideal for walls, ceilings, woodwork. 24 beautiful shades and white. Reg. 3.19. Special, qt. **2.57**

WALLPAPER

ALL NEW 1966 PATTERNS

Good time to come and buy all your requirements. The new patterns are in. Lovely full range of patterns, textures and shades. All are quality papers, washable and fadeless. Easy to apply. Many are pre-pasted. Come revel in the wonderful selection now. Double rolls from Many factory clearouts **90c**



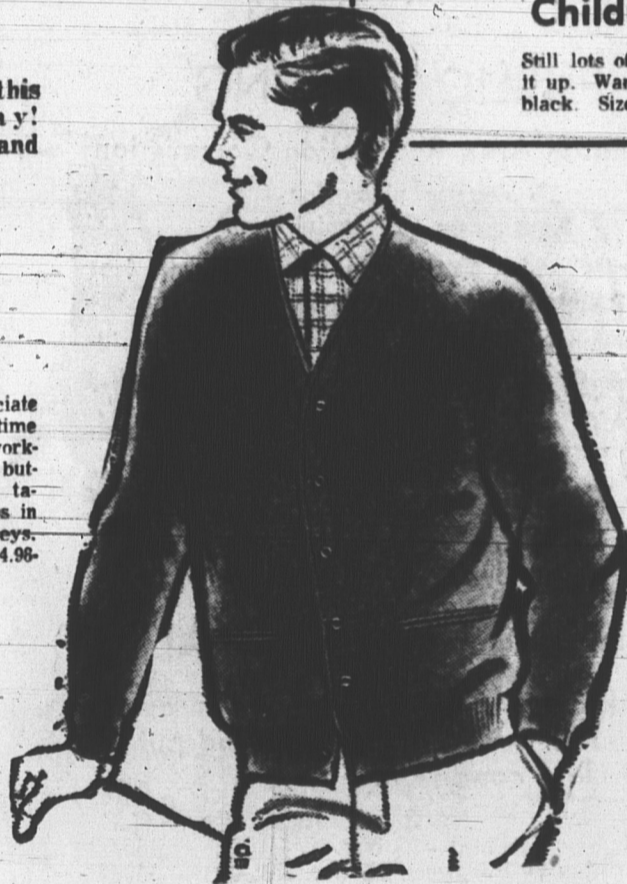
50% DISCOUNT

Dad'll really like this for Valentine's Day! Buy him several and save!

Men's Sport Shirts

Nothing Dad will appreciate more for his leisure time around home, in the workshop. Long sleeves, full button front. Reg. or trim tapered body. New patterns in blues, greens, browns, greys. Sizes S, M, L, XL. Reg. 4.98-6.95. SPECIAL

3.97



Ladies Shift Dresses

What a buy, too tempting to miss. Luscious American prints, in myriad floral designs, multi-prints... you'll love them. Attractive jewel necklines, with jaunty short sleeves. There are stitched sham pockets and attached self-belt that cinches for that dressed look. In sizes 12-20. Reg. value 6.98.

SPECIAL

3.97

Very special values in smart and dressy

Ladies' Shirts and Blouses

So low-priced, you'll buy several of both styles. BLOUSES of Terylene or cotton, so easy to care for. Sizes 10-20. Reg. 4.98-5.98 values. SHIRTS—Assorted prints, roll-ups, split McMullins or regular collars. Short or long sleeves. Sizes 10-20. Reg. 3.98-4.98—your choice.

Special, each

2.97



Children's Duffle Coats

Still lots of winter left, and when you see a buy like this, snap it up. Warm quilt lining, pile lined hood. In charcoal, loden or black. Sizes 4-6x. Reg. 9.98. SPECIAL

6.67

Manufacturer's Clearance! You Can Save Handsomely on these quality

Men's and Boys' Cardigans and Pullovers

MEN'S SWEATERS—In cardigan or pullover style... something to please him this Valentine's Day, for sure, and years after. Five-button front cardigans or pullovers. Many plain or fancy designs in shades of white, brown, grey, black or fawn. Sizes small, medium or large. Don't miss this wonderful buy. Reg. 12.95-19.95.

SPECIAL

8.97

BOYS' SWEATERS—In cardigan or pullover style. 100% wool in bulky knit. Full raglan shoulder. In beige, brown, green, blue. Sizes small, medium or large. Reg. 8.98-13.95 values.

SPECIAL

6.97

Enjoy the Island's Newest Sport!

Lots of SKIING Yet for You!

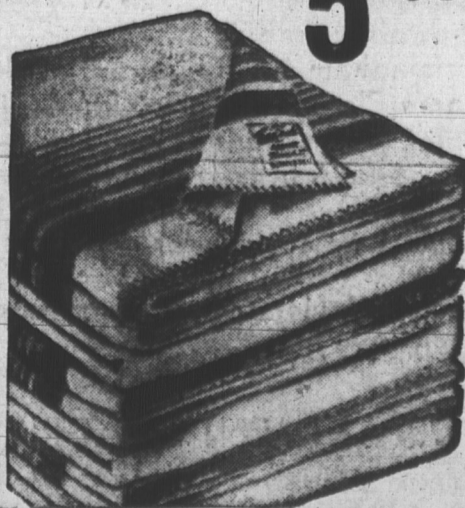
ASPEN SKIS—A 28-pc. laminated ski with full tip and heel protectors, ebony base and durable interlocking steel edges. Quality Nordkapp single release toe binding with standard cable straps. Complete with the lightweight, durable aluminum poles. Reg. 39.95 value **34.97**

NORDAPP SKIS—Bright solid red ski, with white-top edge. Full tip and heel protectors. Fully steel edged. Nordkapp toe release toe binding. Aluminum poles included. Reg. 32.95 value. Special **27.97**



Flannelette Blankets

Another Big Value for Gifts! Famous for quality in make and warmth. Tex-Made Ixex brand. Thick fleecy cotton. Double bed size, 70" x 90". Reg. 6.79. Special, pair **5.97**



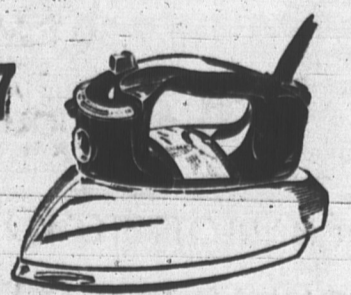
The best iron for wash and wear fabrics!

G. E. Steam Irons

Has a constant flow steam system that gives twice as much steam. Changes from steam to dry ironing quickly, easily. Lightweight with long attached, out-of-the-way cord. Fast-heating element is guaranteed for 1 year. Good gift idea. Reg. 13.95.

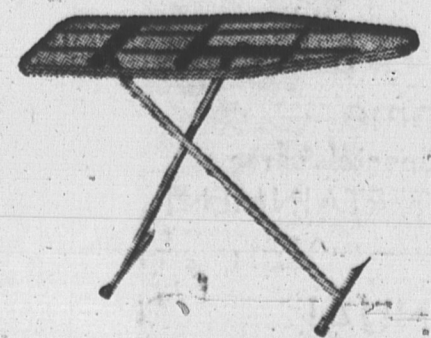
SPECIAL

12.97



All-Metal Folding Ironing Boards

Double tubular, rubber tipped legs for sturdiness. 54" standard size—with smart-looking two-tone enameled finish. Fully adjustable to any height to make it just right for your ironing. Cool meshed top. Reg. 9.98. Special **7.87**



Don't Wait 'til Spring . . . DO IT NOW!

Douglas Fir Plywood

Do your own cupboards. Easily installed. Laminated with waterproof glue. Light, easy to handle 4' x 8' sheets, 5/16" thick. Strength without weight. Standard grade. Reg. 4.49. Special **3.57**

4' x 8' Arborite Sheets

Glamour for your kitchen or bathroom. Durable plastic laminate resists scratches. Wipes clean, colourfast beauty. Easily installed. 1/16" thick. Reg. 22.95. Special, sheet **19.47**

Save on Sheetrock!

Avoids messy plastering. Fire-resistant Gypsum for maximum fire protection. Exclusive tapered edges for easy joint filling. 3/4" thick. 4' x 8' sheets. No out of town delv. Reg. 2.59. Special **2.17**

Attractive Ceiling Tiles

Beautiful, glistening white ceiling tiles to brighten your home up. Fire-resistant. 12" x 24" size. V-grooved on 12" centre. For older homes, simply strip over your existing ceiling and apply with staples. Reg. 35c. Special **28.97c**

Beautiful Floor Tiles

Of durable vinyl asbestos. Hardly any waxing to keep the lustre. Resists spills and grease spots. Beautiful modern shades. 9" x 9", .080 gauge. Reg. .16 each. Special, each tile **13c**

Douglas Fir Plywood

Adds glamour to your rumpus room; any wall you install. Easy to install and quick. Good, durable 3/4" material, good 1 side. Reg. 13.35. Special, sheet **11.37**

STORE HOURS:

CHARLOTTETOWN:
Monday thru Thursday 9:00-5:30
Friday 9:00-9:30
Saturday 9:00-3:30
SUMMERSIDE
Monday thru Thursday 8:30-5:00
Friday 8:30-9:00
Saturday 8:30-Noon

