



PHYSICAL EDUCATION DIRECTORS MEET

Representatives from every high school district in the province were on hand Saturday for the annual meeting of the Prince Edward Island Inter-Scholastic Physical Education Association, held at Birchwood High School. In addition to the

presentation of the usual reports, discussion ranged over an extensive field of sports and recreational activities. A number of the directors are shown here with Dave Bowell, provincial director of physical education; left to right, Don School,

Matheson, Athena Regional High School, Summerside; Mr. Boswell, Dave Hooper, Tignish Regional High School, Don Le-Clair, Montague Regional High School and Clarence Gallant, Miscouche Regional High School.

Speaker Voices Concern For The Underdeveloped

By GEOFF TURNBULL
Unwinding after a remarkable speech to a large audience composed mainly of delegates to the Labor Council's education workshop at their annual dinner, Romeo Malone sat easily on the edge of his hotel room bed and watched the first game of the Toronto-Detroit Stanley Cup series on television.

Assistant Director of the International Labour Department of the C.L.C. he is a big, heavy man with dark, beetle-browed eyes and a very pleasant disposition.

of millions of people in the bad underdeveloped nations of the world.
This and related problems were the core of his address. Expounding eloquently on the severity of difficulties imposed by the transition to modern life on a backward, underdeveloped and depressed area, he said, "it is important that we get rid of the 'we' and 'they' approach, — for we are all in the same boat."

Water Leak Is Patched

Water pressure throughout the city was close to normal as crews of the Water Dept. patched the "big leak" on Goodwill Avenue near Sidmouth Saturday.

The break in the main was caused by a large stone pressing against the line as it settled in the earth.
The main is fed from two directions at once and so the break had the effect of two breaks.

More than 5,000,000 gallons of water leaked into a sewer line running some eight feet beneath the water main, early Friday and water pressure in most homes in Charlottetown was down considerably during the period of the break, some 24 hours.

LOCAL BRIEFS

VISITED DAUGHTER
Mrs. Norman Stewart, Charlottetown, was a recent visitor at the home of her daughter, Mrs. Ernest Machon, Murray Harbor. She also visited with her son William Stewart and her sister-in-law, Mrs. William J. MacKay, Murray River.

NOT IN HOSPITAL
The man which appeared in Saturday's issue of the paper in which it was stated that Mrs. Joseph Carr, Charlottetown, was a patient in the hospital, is incorrect. Mrs. Carr is not in hospital, neither is she ill.

CAKE WINNER
At the conclusion of the bake sale staged at Moore and MacLeod's store, Queen Street, on Friday, Mrs. Fred Mahon, 203 Dixon Street was declared the winner of the light fruit cake.

WRONG NAME
In Saturday's published list of the winners of the Centennial Penmanship competition, the name of May Beth Hogan which appeared as 1st place winner for grade 4 should have read Mary Beth Hogan.

DIES IN CAR
Norman Russell MacLeod, 37, of Uizig, was found dead in his car at Lindale at 2:30 p.m. yesterday. It is believed he died from carbon monoxide poisoning. A doctor at the scene estimated the time of death at approximately four a.m. Sunday. Mr. MacLeod was married.

HUGHES FUNERAL — The funeral for Mrs. George H. Hughes of Brackley point was held Sunday afternoon from the Catholic Funeral Home where service was conducted by Rev. P.H. Baxter. Hymns sung were: "Unto The Hills" and "The Lord's My Shepherd." Pallbearers were: David Seaman, Earl Sheffington, Edward MacCallum, George MacCallum, Fenton McLane and George Shaw. Flowerbearers were: Lowell Younker, Miller Bearisio, Glendon MacLaughlin and James MacCallum. Interment was in West Covehead cemetery.

ISLAND NEWS PAGE

Eastern And Central Districts
The Guardian, Charlottetown, Mon. April 13, 1964. 5

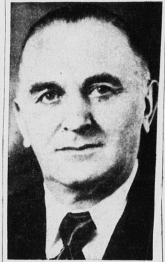
G'town Legion Honors Its Service Officer

GEORGETOWN — At a recent meeting of the Georgetown Branch No. 16 of the Royal Canadian Legion, presided over by Alec Arsenault, it was voted that the Branch pay the sum of \$1.00 on a 1964 per capita basis to Comrade D.F. Campbell, Legion Service Officer, who has done valuable work in the interests of veterans without any extra remuneration.
Comrade Campbell who was in attendance addressed the meeting, dealing with matters of pensions obtained; medical care; Department of Veterans Affairs services; and other matters vital to Legion members and all veterans.
At the conclusion of his remarks he was the recipient of thanks of the members, shown

by a hearty round of applause. Following the reading of the minutes by secretary Harry Vorstan, a circular addressed to all Legion Branches, from the Minister of Veterans Affairs, explaining the position of the Government with regard to closure of certain Veterans Hospitals, was read.
President Arsenault, in the absence of the treasurer, gave the branch a brief outline of the branch's financial standing.
The application of Robert Burke for membership status was accepted.
It was decided to purchase a Canadian Ensign, measuring 6 feet by 3 feet, to be presented to Georgetown High School for use during Centennial Celebrations and afterwards. Stewart and Gordon Lavers, having resumed his duties as a crew member of one of the Canadian National Railway car ferries, his duties will be taken over on an interim basis by Comrade William Stevens.
As branch sports officer, president Arsenault reported that the Cribbage Tournament, which had been carried on during the winter months, on a weekly basis had been won by Mr. and Mrs. Albert Brossard.
The winners of teams made up of Legion members were: Alec Arsenault and Lawrence Batchelder finishing first and Wallace MacDonald and Gordon Lavers finishing second.
The two Legion teams will play off in a round-robin tournament with teams from the Montague and Carleton Place branches for the right to represent the Southern Kings Zone in Legion Provincial Cribbage Playoffs.

Construction Office Guffed In Sunday Fire

A fire Sunday morning gutted a building at Belvedere Corner occupied by Comac Construction and Alvin MacCurville.
The MacCurville family, who had moved into the upstairs apartment only two weeks ago, were in Montreal on holiday and there were no persons in the building when the fire broke out.
The fire was believed to have originated in the wall of the garage office, near an electrical outlet. It quickly spread throughout the downstairs and completely destroyed the records and office equipment of the construction firm.
The fire ate its way upstairs and caused some damage to the apartment, but the majority of the damage in the apartment was caused by smoke.
The building is owned by Irving Oil Company, but it was not known if the building was covered by insurance.
Parkdale Fire Department answered the call at 8:15 a.m. and the fire was declared out at 8:30.



IN HOSPITAL

Mayor Bruce H. Yen of the Kings County Memorial Hospital for treatment for an undisclosed illness. Mayor Yen, 54, last week returned from a business trip to the mainland.

GET TWINS AGAIN
MINNEAPOLIS (AP) — The third set of twins for the James Streblo family since early 1961 arrived Tuesday at University of Minnesota Hospital. The two boys, six pounds four ounces and five pounds 10 ounces, bring the family to a total of eight children, all under 6.

Rev. Campbell Dies In Winn.

The death occurred in Winnipeg of Rev. Joseph Campbell, formerly of Carleton, on April 6, 1964. Death was attributed to a heart attack.
He was the son of the late Mr. and Mrs. Donald Campbell of Carleton, but he lived most of his life in the west after being ordained in 1929 for a Winnipeg diocese. He graduated from St. Dunstan's University in the mid-20's. He served as a chaplain in the Air Force during the World War II.
He left no living brothers or sisters, as a brother, John J. Campbell died in 1948 as did a sister, Marjorie Mrs. John A. Campbell of Newport. Two half-sisters, Lucy and Annie are both dead.

those days. You used the camera like a pen."
Talking about the assassination of President Kennedy and the subsequent murder of Lee Harvey Oswald, he said he is sure both killers were engineered by haters.
"The God I'm not American," he said.
Chaplin also recalled his own law troubles. He was acquitted in 1944 of charges of transporting Joan Barry across state lines for immoral purposes, but later lost a paternity suit Miss Barry brought.
The comedian left the United States in 1952 after being charged in the U.S. Congress with extreme left-wing affiliations. He vowed never to return and never has.

STARTING TODAY 3 DAYS

SEVEN ARTS PRODUCTIONS, ITEL PRODUCTIONS
BURT LANCASTER
KIRK DOUGLAS
FREDDIE MARCH
JOHN FRANKENHEIMER, GEL
SEVEN DAYS IN MAY
AN EPIC BY JOHN FRANKENHEIMER
FROM THE BEST SELLER THAT ASTOUNDED THE NATION!
EDMUND O'BRIEN - MARTIN BALSAM
EDWARD LEWIS JOHN FRANKENHEIMER ROD SERLING
BASED ON THE NOVEL BY PERCIVAL WOODS AND COINED BY MURDER BY THE BOOKS COLLECTIVE
CAPITOL SHOWS
3:30 - 7 - 9:10

Charlie Chaplin Says Hollywood Was Wonderful

LONDON (AP) — "Thank God I'm not American," Charlie Chaplin said Sunday.
He was interviewed by The Sunday Times at the Irish fishing village of Waterville, where he was working on his memoirs before returning to Switzerland for his 75th birthday party Tuesday.
The British-born star recalled his U.S. film days fondly, however.
"Hollywood was wonderful," he said. "A marvellous place in



She used to be bothered by backaches and tired feeling. When she learned that irritation of the bladder and urinary tract can result in backache and tired feeling, she took Dodd's Kidney Pills. Smart girl, Dodd's Kidney Pills stimulate the kidneys to help relieve the condition causing the backache and tired feeling. Soon she felt better — rested better. If you are bothered by backache, Dodd's Kidney Pills may help you, too. You can depend on Dodd's. 85

TAX TIME SPECIALS!
New Adding Machines **97.50 UP**
CUDIMORE BUSINESS EQUIPMENT



NOT JUST STRETCH STRAPS... BUT STRETCH STRAPS THAT CONTINUE DOWN AND OVER THE BUST FOR COMPLETE FREEDOM OF MOVEMENT.

More good news—Gothic's improved stretch straps have adjustable slides and velvety shoulder pads that feel wonderful, prevent curling and "digging in." Of course, it's made with exclusive "gortex" "butterfly" inserts for fashionable support—the feature that earned Gothic its reputation as a "bra with the beautiful fit." Tailored with Canadian air of lovely all-over embroidered fine cotton in fustayles—one is perfect for you.
Bandeau (shown above) in sizes 32-36A, 32-38B, 32-40C, 32-40D, 32-40E, 32-40F, 32-40G, 32-40H, 32-40I, 32-40J, 32-40K, 32-40L, 32-40M, 32-40N, 32-40O, 32-40P, 32-40Q, 32-40R, 32-40S, 32-40T, 32-40U, 32-40V, 32-40W, 32-40X, 32-40Y, 32-40Z, 32-40AA, 32-40AB, 32-40AC, 32-40AD, 32-40AE, 32-40AF, 32-40AG, 32-40AH, 32-40AI, 32-40AJ, 32-40AK, 32-40AL, 32-40AM, 32-40AN, 32-40AO, 32-40AP, 32-40AQ, 32-40AR, 32-40AS, 32-40AT, 32-40AU, 32-40AV, 32-40AW, 32-40AX, 32-40AY, 32-40AZ, 32-40BA, 32-40BB, 32-40BC, 32-40BD, 32-40BE, 32-40BF, 32-40BG, 32-40BH, 32-40BI, 32-40BJ, 32-40BK, 32-40BL, 32-40BM, 32-40BN, 32-40BO, 32-40BP, 32-40BQ, 32-40BR, 32-40BS, 32-40BT, 32-40BU, 32-40BV, 32-40BW, 32-40BX, 32-40BY, 32-40BZ, 32-40CA, 32-40CB, 32-40CC, 32-40CD, 32-40CE, 32-40CF, 32-40CG, 32-40CH, 32-40CI, 32-40CJ, 32-40CK, 32-40CL, 32-40CM, 32-40CN, 32-40CO, 32-40CP, 32-40CQ, 32-40CR, 32-40CS, 32-40CT, 32-40CU, 32-40CV, 32-40CW, 32-40CX, 32-40CY, 32-40CZ, 32-40DA, 32-40DB, 32-40DC, 32-40DD, 32-40DE, 32-40DF, 32-40DG, 32-40DH, 32-40DI, 32-40DJ, 32-40DK, 32-40DL, 32-40DM, 32-40DN, 32-40DO, 32-40DP, 32-40DQ, 32-40DR, 32-40DS, 32-40DT, 32-40DU, 32-40DV, 32-40DW, 32-40DX, 32-40DY, 32-40DZ, 32-40EA, 32-40EB, 32-40EC, 32-40ED, 32-40EE, 32-40EF, 32-40EG, 32-40EH, 32-40EI, 32-40EJ, 32-40EK, 32-40EL, 32-40EM, 32-40EN, 32-40EO, 32-40EP, 32-40EQ, 32-40ER, 32-40ES, 32-40ET, 32-40EU, 32-40EV, 32-40EW, 32-40EX, 32-40EY, 32-40EZ, 32-40FA, 32-40FB, 32-40FC, 32-40FD, 32-40FE, 32-40FF, 32-40FG, 32-40FH, 32-40FI, 32-40FJ, 32-40FK, 32-40FL, 32-40FM, 32-40FN, 32-40FO, 32-40FP, 32-40FQ, 32-40FR, 32-40FS, 32-40FT, 32-40FU, 32-40FV, 32-40FW, 32-40FX, 32-40FY, 32-40FZ, 32-40GA, 32-40GB, 32-40GC, 32-40GD, 32-40GE, 32-40GF, 32-40GG, 32-40GH, 32-40GI, 32-40GJ, 32-40GK, 32-40GL, 32-40GM, 32-40GN, 32-40GO, 32-40GP, 32-40GQ, 32-40GR, 32-40GS, 32-40GT, 32-40GU, 32-40GV, 32-40GW, 32-40GX, 32-40GY, 32-40GZ, 32-40HA, 32-40HB, 32-40HC, 32-40HD, 32-40HE, 32-40HF, 32-40HG, 32-40HH, 32-40HI, 32-40HJ, 32-40HK, 32-40HL, 32-40HM, 32-40HN, 32-40HO, 32-40HP, 32-40HQ, 32-40HR, 32-40HS, 32-40HT, 32-40HU, 32-40HV, 32-40HW, 32-40HX, 32-40HY, 32-40HZ, 32-40IA, 32-40IB, 32-40IC, 32-40ID, 32-40IE, 32-40IF, 32-40IG, 32-40IH, 32-40II, 32-40IJ, 32-40IK, 32-40IL, 32-40IM, 32-40IN, 32-40IO, 32-40IP, 32-40IQ, 32-40IR, 32-40IS, 32-40IT, 32-40IU, 32-40IV, 32-40IW, 32-40IX, 32-40IY, 32-40IZ, 32-40JA, 32-40JB, 32-40JC, 32-40JD, 32-40JE, 32-40JF, 32-40JG, 32-40JH, 32-40JI, 32-40JJ, 32-40JK, 32-40JL, 32-40JM, 32-40JN, 32-40JO, 32-40JP, 32-40JQ, 32-40JR, 32-40JS, 32-40JT, 32-40JU, 32-40JV, 32-40JW, 32-40JX, 32-40JY, 32-40JZ, 32-40KA, 32-40KB, 32-40KC, 32-40KD, 32-40KE, 32-40KF, 32-40KG, 32-40KH, 32-40KI, 32-40KJ, 32-40KL, 32-40KM, 32-40KN, 32-40KO, 32-40KP, 32-40KQ, 32-40KR, 32-40KS, 32-40KT, 32-40KU, 32-40KV, 32-40KW, 32-40KX, 32-40KY, 32-40KZ, 32-40LA, 32-40LB, 32-40LC, 32-40LD, 32-40LE, 32-40LF, 32-40LG, 32-40LH, 32-40LI, 32-40LJ, 32-40LK, 32-40LL, 32-40LM, 32-40LN, 32-40LO, 32-40LP, 32-40LQ, 32-40LR, 32-40LS, 32-40LT, 32-40LU, 32-40LV, 32-40LW, 32-40LX, 32-40LY, 32-40LZ, 32-40MA, 32-40MB, 32-40MC, 32-40MD, 32-40ME, 32-40MF, 32-40MG, 32-40MH, 32-40MI, 32-40MJ, 32-40MK, 32-40ML, 32-40MM, 32-40MN, 32-40MO, 32-40MP, 32-40MQ, 32-40MR, 32-40MS, 32-40MT, 32-40MU, 32-40MV, 32-40MW, 32-40MX, 32-40MY, 32-40MZ, 32-40NA, 32-40NB, 32-40NC, 32-40ND, 32-40NE, 32-40NF, 32-40NG, 32-40NH, 32-40NI, 32-40NJ, 32-40NK, 32-40NL, 32-40NM, 32-40NN, 32-40NO, 32-40NP, 32-40NQ, 32-40NR, 32-40NS, 32-40NT, 32-40NU, 32-40NV, 32-40NW, 32-40NX, 32-40NY, 32-40NZ, 32-40OA, 32-40OB, 32-40OC, 32-40OD, 32-40OE, 32-40OF, 32-40OG, 32-40OH, 32-40OI, 32-40OJ, 32-40OK, 32-40OL, 32-40OM, 32-40ON, 32-40OO, 32-40OP, 32-40OQ, 32-40OR, 32-40OS, 32-40OT, 32-40OU, 32-40OV, 32-40OW, 32-40OX, 32-40OY, 32-40OZ, 32-40PA, 32-40PB, 32-40PC, 32-40PD, 32-40PE, 32-40PF, 32-40PG, 32-40PH, 32-40PI, 32-40PJ, 32-40PK, 32-40PL, 32-40PM, 32-40PN, 32-40PO, 32-40PP, 32-40PQ, 32-40PR, 32-40PS, 32-40PT, 32-40PU, 32-40PV, 32-40PW, 32-40PX, 32-40PY, 32-40PZ, 32-40QA, 32-40QB, 32-40QC, 32-40QD, 32-40QE, 32-40QF, 32-40QG, 32-40QH, 32-40QI, 32-40QJ, 32-40QK, 32-40QL, 32-40QM, 32-40QN, 32-40QO, 32-40QP, 32-40QQ, 32-40QR, 32-40QS, 32-40QT, 32-40QU, 32-40QV, 32-40QW, 32-40QX, 32-40QY, 32-40QZ, 32-40RA, 32-40RB, 32-40RC, 32-40RD, 32-40RE, 32-40RF, 32-40RG, 32-40RH, 32-40RI, 32-40RJ, 32-40RK, 32-40RL, 32-40RM, 32-40RN, 32-40RO, 32-40RP, 32-40RQ, 32-40RR, 32-40RS, 32-40RT, 32-40RU, 32-40RV, 32-40RW, 32-40RX, 32-40RY, 32-40RZ, 32-40SA, 32-40SB, 32-40SC, 32-40SD, 32-40SE, 32-40SF, 32-40SG, 32-40SH, 32-40SI, 32-40SJ, 32-40SK, 32-40SL, 32-40SM, 32-40SN, 32-40SO, 32-40SP, 32-40SQ, 32-40SR, 32-40SS, 32-40ST, 32-40SU, 32-40SV, 32-40SW, 32-40SX, 32-40SY, 32-40SZ, 32-40TA, 32-40TB, 32-40TC, 32-40TD, 32-40TE, 32-40TF, 32-40TG, 32-40TH, 32-40TI, 32-40TJ, 32-40TK, 32-40TL, 32-40TM, 32-40TN, 32-40TO, 32-40TP, 32-40TQ, 32-40TR, 32-40TS, 32-40TT, 32-40TU, 32-40TV, 32-40TW, 32-40TX, 32-40TY, 32-40TZ, 32-40UA, 32-40UB, 32-40UC, 32-40UD, 32-40UE, 32-40UF, 32-40UG, 32-40UH, 32-40UI, 32-40UJ, 32-40UK, 32-40UL, 32-40UM, 32-40UN, 32-40UO, 32-40UP, 32-40UQ, 32-40UR, 32-40US, 32-40UT, 32-40UU, 32-40UV, 32-40UW, 32-40UX, 32-40UY, 32-40UZ, 32-40VA, 32-40VB, 32-40VC, 32-40VD, 32-40VE, 32-40VF, 32-40VG, 32-40VH, 32-40VI, 32-40VJ, 32-40VK, 32-40VL, 32-40VM, 32-40VN, 32-40VO, 32-40VP, 32-40VQ, 32-40VR, 32-40VS, 32-40VT, 32-40VU, 32-40VV, 32-40VW, 32-40VX, 32-40VY, 32-40VZ, 32-40WA, 32-40WB, 32-40WC, 32-40WD, 32-40WE, 32-40WF, 32-40WG, 32-40WH, 32-40WI, 32-40WJ, 32-40WK, 32-40WL, 32-40WM, 32-40WN, 32-40WO, 32-40WP, 32-40WQ, 32-40WR, 32-40WS, 32-40WT, 32-40WU, 32-40WV, 32-40WW, 32-40WX, 32-40WY, 32-40WZ, 32-40XA, 32-40XB, 32-40XC, 32-40XD, 32-40XE, 32-40XF, 32-40XG, 32-40XH, 32-40XI, 32-40XJ, 32-40XK, 32-40XL, 32-40XM, 32-40XN, 32-40XO, 32-40XP, 32-40XQ, 32-40XR, 32-40XS, 32-40XT, 32-40XU, 32-40XV, 32-40XW, 32-40XX, 32-40XY, 32-40XZ, 32-40YA, 32-40YB, 32-40YC, 32-40YD, 32-40YE, 32-40YF, 32-40YG, 32-40YH, 32-40YI, 32-40YJ, 32-40YK, 32-40YL, 32-40YM, 32-40YN, 32-40YO, 32-40YP, 32-40YQ, 32-40YR, 32-40YS, 32-40YT, 32-40YU, 32-40YV, 32-40YW, 32-40YX, 32-40YY, 32-40YZ, 32-40ZA, 32-40ZB, 32-40ZC, 32-40ZD, 32-40ZE, 32-40ZF, 32-40ZG, 32-40ZH, 32-40ZI, 32-40ZJ, 32-40ZK, 32-40ZL, 32-40ZM, 32-40ZN, 32-40ZO, 32-40ZP, 32-40ZQ, 32-40ZR, 32-40ZS, 32-40ZT, 32-40ZU, 32-40ZV, 32-40ZW, 32-40ZX, 32-40ZY, 32-40ZZ

GOthic 300
STRETCH STRAP BANDEAU
DOMINION CORSET COMPANY, LTD.
QUEBEC - MONTREAL - TORONTO - VANCOUVER



Great new standout in the economy car field now at your Vauxhall-Pontiac-Buick Dealer's

Viva is no ordinary small car. Compared to the others, it gives you more power — much more. It gives you tight-fisted economy that lets you go 30,000 miles between lubrications and get up to 45 mpg. Viva is roomy. Has lots of luggage space. Rides smoothly, handles delightfully. Like we said — Viva is no ordinary small car. See and drive one soon.
VAUXHALL VIVA \$1,735*
*Suggested maximum retail price of a Viva Sedan with heater and defroster at CHARLOTTETOWN
Price quoted includes delivery and handling charges, Federal Sales and Excise taxes, Provincial and local taxes and licence are not included.
SEE YOUR LOCAL VAUXHALL-PONTIAC-BUICK DEALER
AUTHORIZED VIVA DEALER IN CHARLOTTETOWN
HILLSIDE MOTORS LTD.
113 St. Peters Road Charlottetown, P.E.I. Dial 2-1343
Be sure to watch "Telescope" on CFXY-TV Friday at 10:30 p.m. and "Zero One" on CFXY-TV Tuesday 8 p.m.