

**Vikings Said  
In Nfld. 1,000 Yrs.  
Before Columbus**

LONDON (CP) — Norwegian explorer Helge Ingstad says he has evidence that Vikings lived in Newfoundland nearly 1,000 years ago—long before Columbus arrived in America.

Ingstad said here that he and a team of international scientists completed excavation of a number of Newfoundland sites last fall.

Among their finds was the remains of a house, 60 feet by 45 feet, with traces of iron workings unknown to the Eskimo and Indians of the 10th century.

"From the evidence we have, it is overwhelmingly likely that this place was a Norse site from a time before Columbus," he said.

Other finds include large sails and fragments of bronze but they have yet to be analyzed. A final report on the expedition will be published when tests are finished.

**Letter Shows  
Senator Opposed  
Cuban Invasion**

WASHINGTON (AP) — Senator J. William Fulbright, chairman of the Senate foreign relations committee, raised strong objections to a U.S.-backed invasion of Cuba in a memorandum to President Kennedy shortly before the Bay of Pigs fiasco in March, 1961.

The communication was published for the first time in the book Fulbright of Arkansas, a collection of the Democratic senator's papers and speeches edited by Karl E. Meyer, editorial writer for the Washington Post.

Fulbright's argument was that the United States would get such a moral black eye, and set off such public reaction south of the Rio Grande, that the result would be a net loss for the country even if Fidel Castro's regime were successfully erased as a base for subversive organization and money.

"For the United States to overthrow Castro behind a facade of Cuban exiles would merely add fuel to the appeal of Castroism," Fulbright wrote.

**WARNS OF REACTION**

"Such an action would be denounced from the Rio Grande to Patagonia as an example of imperialism. . . . We would undoubtedly also confront a serious situation in the UN."

Fulbright's preference was for an effort to isolate and isolate Castro from the rest of Latin America.

"Whether we like it or not, we are in truth engaged in a kind of competitive coexistence with Castro to see whose system can produce reform and progress more quickly. . . . To look at the other side of the proposition, it would be a fatal confession of lack of faith in ourselves and our values if we decreed that Castro must go because he might succeed."

**Garden Party  
Crowd Called  
'Mad Dogs'**

MELBOURNE, Australia (Reuters)—The Melbourne Age quotes a senior Adelaide police officer as saying huge crowds at a royal garden party in Adelaide Wednesday behaved like "mad dogs."

Elegantly dressed women pushed and shoved to within "touching distance" of the Queen and Prince Philip, hats were knocked off, shoes were broken and stockings torn as many of the 10,000 guests surged forward, the newspaper says.

The Age says at one stage the Queen was practically immersed in a two-yard circle in the midst of a surging sea of people in the 90-degree heat. The prince was isolated some distance away.

The Queen, however, never lost her composure and continued to chat with those closest to her and ignored the hundreds pushing from the rear.

The Age says:

Philip also seemed relaxed and unbothered. He drew a cheer when he stopped to pick up a white handkerchief dropped by an elderly woman waving to him, the newspaper says. He returned it with a slight bow, smiled and passed on.

**RESTRICT EX-LABOR CHIEF**

JOHANNESBURG (Reuters)—Leo Levy, former president of the South African Congress of Trade Unions, has been placed under restrictions through the Suppression of Communism Act. Levy was confined to the Johannesburg magisterial district and forbidden to attend social gatherings, communicate with other banned persons or enter areas reserved for non-whites.

**NAMES PAPAL ENVOY**

VATICAN CITY (AP) — Pope John XXIII has established diplomatic relations with the Congo and created an apostolic nunciature in Leopoldville, the Vatican announced Saturday.

The papal nuncio (ambassador) will be Most Rev. Vito Roberti, a Milan-born titular Archbishop of Tumi, who is also the Vatican's diplomatic representative to neighboring Burundi.

# BREAKFAST SPECIALS



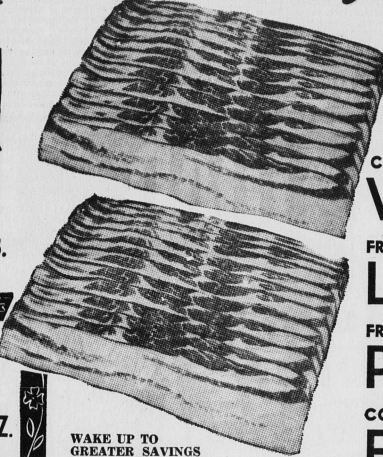
Wake up your family's appetite with the tantalizing smell of frying bacon. Ummm—how they'll go for breakfast!

**Maple Leaf Picture Package**

**BACON**

Canada Packers Bacon  
1/2 Extra Lean  
And Meaty. It's  
Made from Choice  
P.E.I. Hogs.

**65** LB.



P. E. I. First Grade  
**BUTTER** LB. **56**<sup>c</sup>

CHICKEN  
**WINGS** .. lb. **29**<sup>c</sup>

FRESH FROZEN BEEF  
**LIVER** .. lb. **39**<sup>c</sup>

FRESH ROASTING  
**PORK** .. lb. **45**<sup>c</sup>

COD  
**FILLETS** lb. **33**<sup>c</sup>

FRESH GRADE "A"  
**EGGS** **45** DOZ.

WAKE UP TO  
GREATER SAVINGS  
ON FOOD BY  
SHOPPING HERE!

CLARK'S IN TOMATO SAUCE  
**BEANS**  
20 OZ.  
**5** TINS  
FOR **1**

PINK SEAL FANCY  
**SALMON**  
1/2 lb. tin  
**3** TINS  
FOR **1**

RADIC  
**PEAS**  
15 oz.  
**7** TINS  
FOR **1**

MONARCH POUCH PAK  
**CAKE MIX**  
White or Chocolate  
**2** KING  
SIZE  
PKGS.  
FOR **39**<sup>c</sup>

DOMESTIC  
**Shortening**  
1 lb. Packages  
**2** LBS. **59**<sup>c</sup>

**SPECIAL for Pancake Day, Feb. 26th**

AUNT JEMIMA PANCAKE  
**FLOUR** 1 Lb. Box **23**<sup>c</sup>

CROWN BRAND CORN  
**SYRUP** 2 Lb. Tin **35**<sup>c</sup>

SILVER SEAL EXTRA FANCY  
**MOLASSES** 3 QTS. **85**<sup>c</sup>

Giant  
**CHEER** **69**

Newport  
**FLUFFS** **35**<sup>c</sup> 8 QT.

CAMPBELL'S VEGETABLE  
**SOUP** 2 10 OZ. TINS FOR **29**<sup>c</sup>

NESTLES  
**QUIK** 1 Lb. **57**<sup>c</sup>

FIVE ROSES—25 LB.  
**FLOUR** **2.15**

HEINZ—20 OZ.  
**KETCHUP** **39**<sup>c</sup>

HEINZ TOMATO  
**JUICE** 48 OZ. TINS FOR **89**<sup>c</sup>

BALLET TWIN PACK  
**TISSUE** 2 ROLLS FOR **27**<sup>c</sup>

KLEAR PASTE  
**WAX**, 1 LB. TIN **59**<sup>c</sup>

KLEAR LIQUID  
**WAX** QT. **99**<sup>c</sup>

32 OZ.  
**JAVEX** **27**<sup>c</sup>

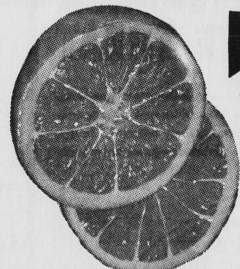
IVORY TWIN PAK  
**SOAP** 2 For **35**<sup>c</sup>

SMILES N' CHUCKLES CANDY  
**JELLIES....29**<sup>c</sup>

From Our Frozen  
Food Department

PERFECTION  
**ICE CREAM**  
**89**<sup>c</sup> 1/2 Gal.

KOLD PAK  
**Strawberries**  
**37**<sup>c</sup> Tub



**PRODUCE**

SUNKIST  
**ORANGES**  
SIZE 138  
DOZ. **69**<sup>c</sup>

P.E.I. CORTLAND  
**APPLES** 5 LB. CELLO BAG **39**<sup>c</sup>

ONTARIO  
**ONIONS** 2 LB. CELLO BAG **23**<sup>c</sup>

EMPEROR  
**GRAPES** . . . . **23**<sup>c</sup> lb.

