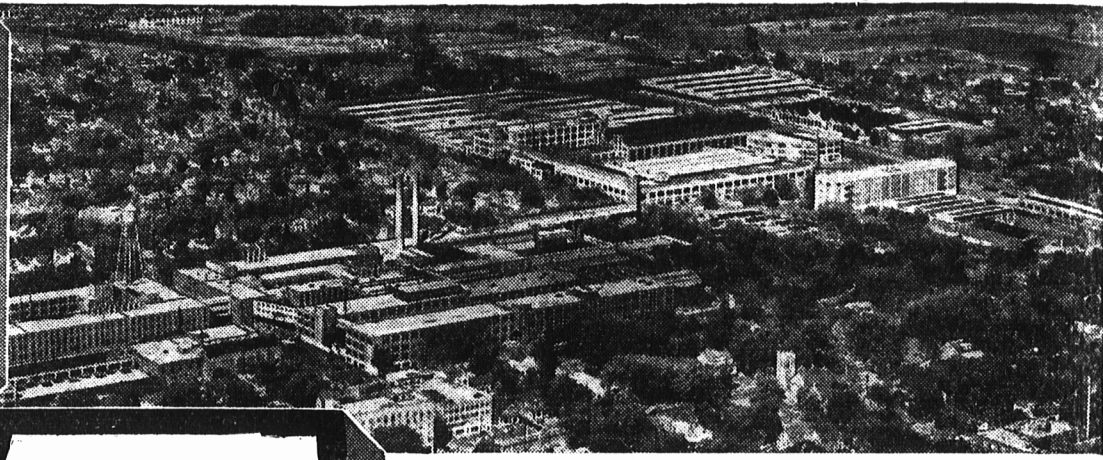
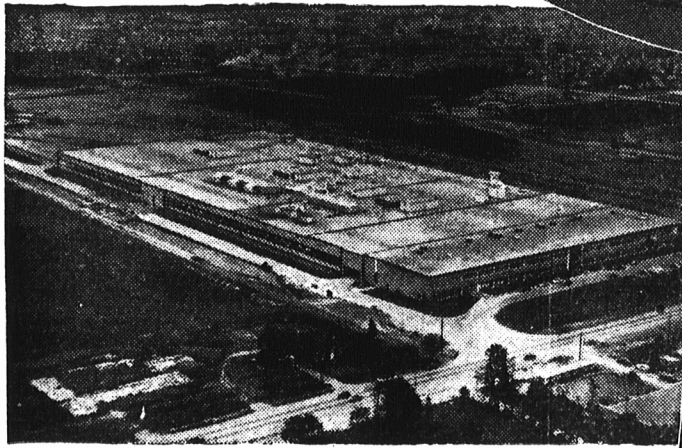


# Moving Ahead with Canada

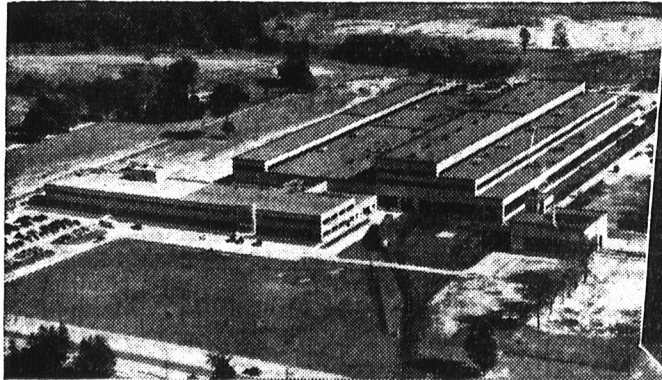
# GENERAL



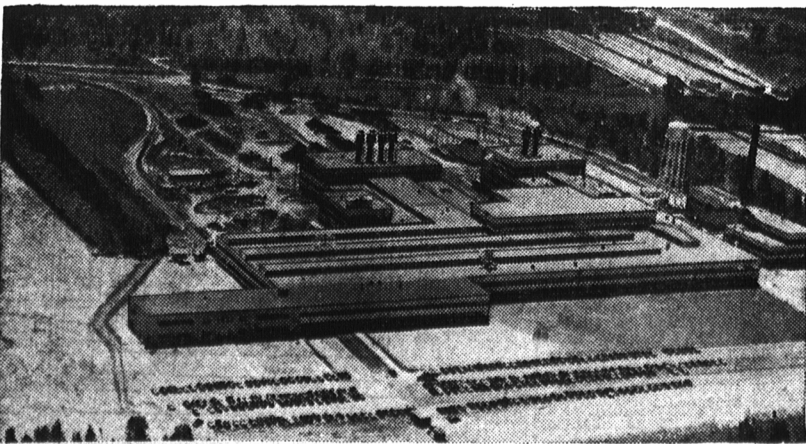
**OSHAWA**—General Motors of Canada Limited moves ahead with Canada, turning out more and better cars and trucks in the tradition of fine craftsmanship established more than 80 years ago by carriage maker Robert McLaughlin. The plant shown has 50 acres of floor space. In addition a new 17-acre truck plant will be opened in 1953 . . . a new six-acre central parts warehouse was opened in 1951, and other new parts warehouses built or under construction are at Vancouver, Winnipeg, London, Montreal and Moncton.



**SCARBOROUGH AND LEASIDE**—Frigidaire moves ahead with Canada. This new 11-acre plant in Scarborough was opened officially on October 16th. In addition, a large plant at Leaside is occupied on defence contracts.



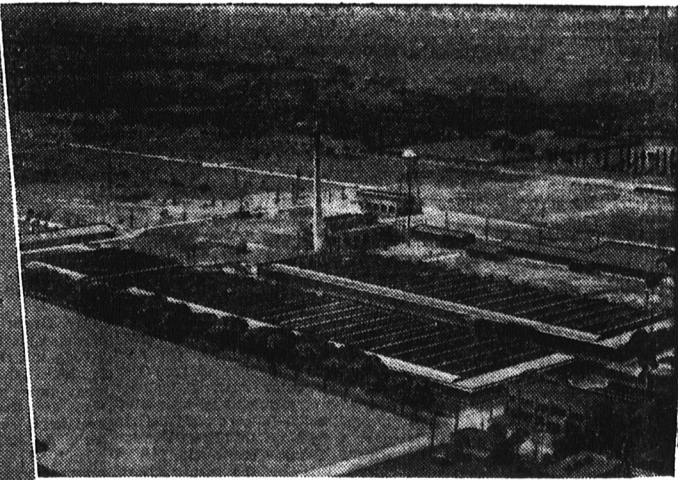
**LONDON**—General Motors Diesel Limited moves ahead with Canada. This seven acre plant opened in 1950 has already announced plans for an 85,000 square foot addition, which will enable it to provide the most modern service facilities for locomotives.



**ST. CATHARINES AND GRANTHAM**—The McKinnon Industries move ahead with Canada. This vast new foundry, opened in Grantham Township on October 15th, makes possible the construction of heavy engine components impossible before. Together with the main plant in the city of St. Catharines, the McKinnon enterprise now has 35 acres under roof and contracts are being let for additional building covering eight acres.

# MOTORS

# MOTORS



**WINDSOR**—The GM Engine Plant moves ahead with Canada. Producing more engines than ever before, the Engine Plant is constantly expanding to meet production demands at Oshawa. It covers 8 acres.

General Motors builds more cars and trucks in Canada than any other manufacturer . . . and because of GM's unchallenged leadership in motor vehicles, many people think of GM as *only* an automotive firm. But there is much more than that to the GM story.

True, GM's largest contribution to Canada's industrial strength is in the vast group of plants in Oshawa, which last year turned out 185,000 cars and trucks. But in London, Ontario, the new plant of General Motors Diesel Limited is building every type of diesel locomotive—quick, efficient switchers, mammoth high-speed road locomotives. In St. Catharines, Ontario, the two plants of The McKinnon Industries Limited turn out varied products from heavy malleable and gray iron castings to small electric motors—Delco motors that power a high percentage of home appliances in Canada. Frigidaire Products of Canada Limited, at Scarborough and Leaside plants, builds world-famous home appliances, as well as com-

mercial refrigeration, air-conditioning and humidity control equipment. In Windsor, the GM Engine Plant builds and tests the power plants for GM's Canadian-built cars and trucks.

Pictured here are representative plants of GM's Canadian divisions. They have been growing impressively—in output, in number of employees, in size of plant . . . striding ahead with our country. Today GM gives employment to over 20,000 Canadians. And what does GM's great industrial strength mean to any one citizen of Canada? It means more things made at home—less to import and thus more to be shared among ourselves in Canada. In addition to turning out more and better things for Canadians, General Motors plants are also contributing to the nation's defence program and to its expanding export markets. That is our proud story. That is General Motors in Canada.



**GENERAL MOTORS OF CANADA**  
LIMITED  
OSHAWA AND WINDSOR

**FRIGIDAIRE PRODUCTS OF CANADA**  
LIMITED  
LEASIDE AND SCARBOROUGH

**GENERAL MOTORS DIESEL**  
LIMITED  
LONDON

**THE MCKINNON INDUSTRIES**  
LIMITED  
ST. CATHARINES AND GRANTHAM TOWNSHIP

**PRODUCING MORE AND BETTER THINGS FOR MORE PEOPLE**