

Work of Army appreciated by many throughout world

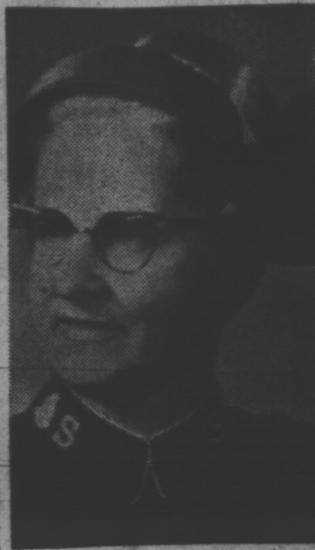
The opening of the new Salvation Army Citadel and Welfare Centre this weekend recalls an earlier era.

It was way back in October, 1890, the local press recorded the laying of the cornerstones for "the new Barracks and officers quarters combined" on the Great George Street site. Salvation Army Major Jacobs was in charge and the stone was laid by Ex-Governor Laird.

In the nearly 76 years which have passed since that day the Army has come to mean a great deal in the life of this city and its people. Thousands have known its work and appreciated the help so freely given.



BRIG. SLOAN



MRS. SLOAN

WAR SERVICE

This is particularly true of former service men who came to know and love the Army and its 'Lassies' in all parts of the world. Veterans of the First World War were loud in their praise of the service rendered to troops on the muddy battlefields of Europe; and millions more came to know and understand the tremendous work of the Army in the holocaust which was the Second World War.

But it is in peacetime the Salvation Army has come to mean so much to the people of this province. When fires broke out on bitterly cold days the Army was there with coffee to warm the dispirited firefighters, and to offer shelter and clothing to homeless and disheartened victims. And just so has the Army helped many disheartened victims of a losing way of life and in so doing has brought hope to countless people.

The Charlottetown Salvation Army Corps was opened in January, 1896, by Captain Doherty.

List of Officers stationed at Charlottetown from date of opening to present were:

Captain Doherty, Capt. Hanna Cook, Capt. Walter Archibald, Capt. Mary Kimberly, Capt. Mariah Carpenter, Capt. Ben Beatty, Capt. Alex McLean, Capt. Maggie Phillips, Capt. Edwin Webb, Capt. William Fraser, Capt. Fred Young, Capt. Robert Gardner, Capt. James Jarvis, Capt. Joe Allan, Capt. Nettie Fradsham, Capt. J. F. McLean, Capt. William Andrews, Capt. William Fraser, Capt. Charles Allen, Ensign Thomas Hughes, Capt. Williams Cummings.

Ensign Ethel Galt, Ensign Helen Matthews, Capt. Mary Moore, Capt. Annie Newell, Ensign Iva Hendricks, Capt. Carrie Sabre, Adj. McGillivray, Capt. Aubrey Harwood, Adj. D. Creighton, Ensign J. K. Miller, Capt. Elmer Goodwin, Adj. Ella McNamee, Ensign Mary Graham, Adj. Alex Crichton, Capt. Andrew Kirk, Capt. W. Jones, Capt. Emily White, Adj. George Howell, Adj. Henry Byers, Ensign Jessie Laws, Capt. Christina March, Ensign Uriah Purdy, Ensign Jane J. Lewis, Capt. I. Forsyth, Adj. Isaac Sparks, Adj. James Bowering, Capt. Chas. Robinson, Ensign William Hargrove, Capt. William

The Plastering and Lathing For the New Salvation Army Citadel

Done By ----

STEWART WATSON

2 Johnston Ave. Charlottetown

The Salvation Army

Charlottetown

Wish to thank the citizens of Prince Edward Island for their generous support of our capital appeal which has made the erection of our New Citadel possible.

OPENING DEC. 3rd

Best Wishes to the Salvation Army on the opening Of Their New Citadel Painting Contractor for this New Citadel

LOUIS HOWATT (Jr.)

Painting Contractor

5 Maple Ave. Dial 4-9610

We Extend

Congratulations

on the opening of

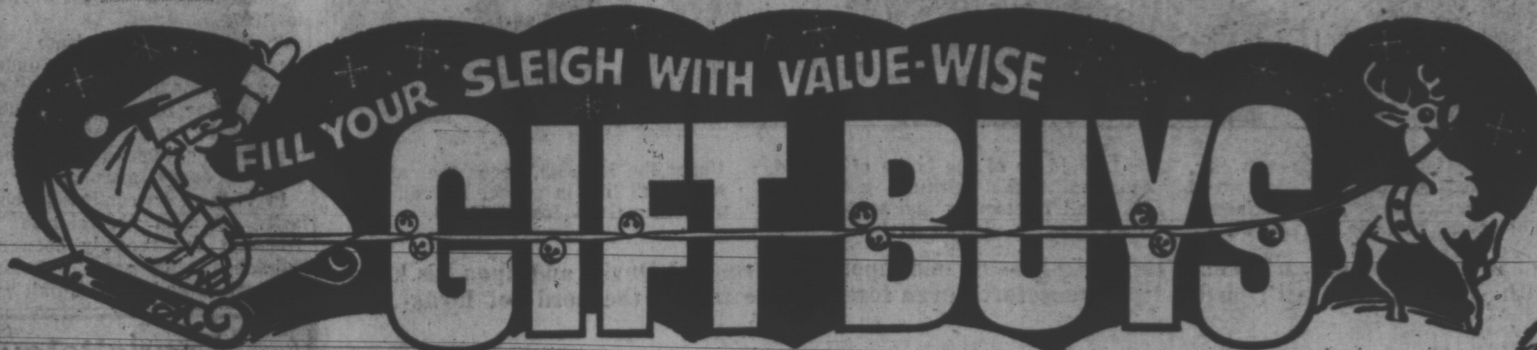
THE NEW SALVATION ARMY CITADEL

We were pleased to have been chosen to do the plumbing, heating and ventilation on this fine new building.

NELSON S. GOOD

17 Hawthorne Ave. Dial 4-8095

Don't Wait Till Christmas SHOP NOW!



CHARLOTTETOWN BRANCH

After Inventory Paint CLEARANCE

INTERIOR LATEX Green Only	5.25 Gal.
INTERIOR SEMI GLOSS ENAMEL Green Only	6.75 Gal.

6 Piece Wrench SET	Hand Rip SAW
Reg. 4.10 So. Reduced to	5 1/2 teeth per in. SPECIAL PRICE
3.25	3.00 ea.



BLACK & DECKER DELUXE

JIG SAW

Regular	\$39.95
Sale	30.70

SAVE 9.25

Black and Decker Utility

SANDER

Regular	\$21.95
Sale	18.45

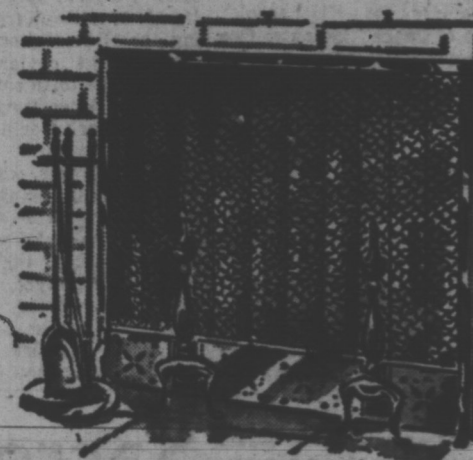
SAVE 3.50

DEWALT RADIAL

ARM SAW

Ideal for the workshop SPECIAL PRICE 329.00

Hearth Warming Gifts



We have a Complete Assortment of Fireplace Accessories

- Spark Guards
- Andiron Sets
- Coal and Wood Cradles

TOP QUALITY SNOWTOOLS FOR WINTER WORK

Snow Shovels	\$2.98 ea.
Snow Pushers	\$5.45 ea.
Snow Sleighs	\$10.50 ea.
Ice Scrapers	\$2.15 ea.

INDOOR OUTDOOR Christmas LIGHTS 15 Lamps Frost Glo

FOR Outdoors	6.90 set
For Indoors	5.00 set

- Weatherstrip-Tape \$1.65 roll
- Weatherstrip-Felt .30 ea.
- Weatherstrip Foam .59 ea.
- Weatherstrip Aluminum and Rubber \$1.50 set
- Draft Check Door Bottoms 3.49 ea.

SUMMERSIDE BRANCH

KEEP DIRT OUT USE OUR COCOTEX MATS

16" x 27"	2.69 ea.
-----------	----------

SCOTCH GARD Rain and Stain Repellants For All Fabrics

12 oz.	2.49 ea.
20 oz.	3.98 ea.

Plate Glass MIRROR

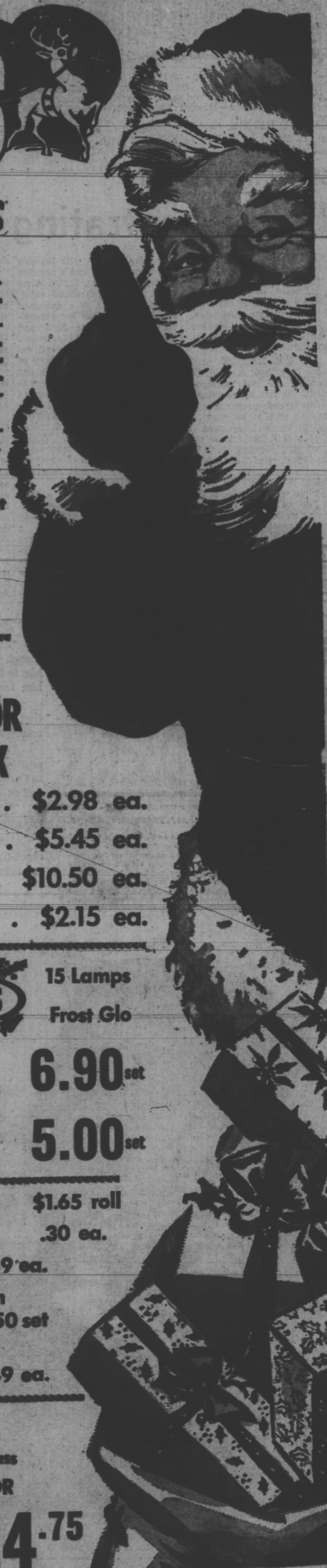
30" x 38" Special	24.75
-------------------	-------

SCHURMAN'S

KENSINGTON Broadway 267-3130

SUMMERSIDE Eustace St. — 436-2265

CHARLOTTETOWN 112 Longworth Ave.—894-7315



Centennial Projects To Be Reviewed

OTTAWA (CP)—The CBC will preview 30 centennial projects across the country in a one-hour telecast Dec. 8.

One of the things Centennial Overture, a national network program, that will begin at 8 p.m. EST, will look at is an outdoor stage shaped like a lobster trap being built for the Centennial Lobster Festival at Shediac, N.B.

The cameras also will focus on an Arctic museum in the Yukon, the Wolf Creek Jubilee Court at Wolsley, Sask., the new Centennial Arts Centre in St. John's, Nfld., preparations for the 1967 Banff Indian Days celebration in Alberta, and a replica of a British Columbia stage coach.

The restoration of Fort Louisbourg in Nova Scotia and Charlottetown's Confederation complex also will be subjects.