

Summerside And Prince County

The Guardian, Charlottetown, Thurs., Aug. 16, 1962. 3

Notable Increase Reported In Potato Blight In Province

A "notable increase" in the number of potato fields infected with late blight is reported in the Weekly Potato Bulletin.

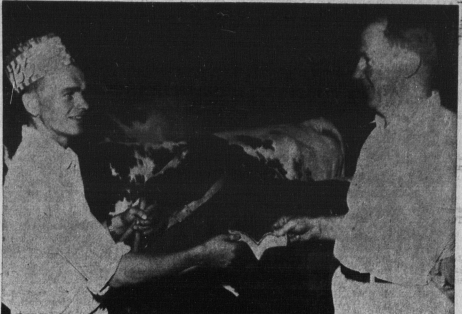
At that, however, the disease has not progressed as much as potato experts have expected.

The bulletin says that it is likely low temperatures have slowed the spread of the disease.

SOUND WARNING The bulletin warns the disease could become a serious problem within a few days if the warm and moist weather continues.

It is strongly advised that spraying should be carried out thoroughly and frequently at this time.

The bulletin is prepared by F.M. Cannon and J.C. Callbeck of the Experimental Farm in Charlottetown.



RAEDALE FARM PRIZE PRESENTED Agriculture Minister Andrew B. MacEliot right, presents a cheque for \$25 donated by Raedale Farm to Wallace Wood who showed the best Arryshire cow 10 years and over, which is owned by Marshall Wood and Sons, Arryshire field.

3 Youths Injured At Borden Pier

BORDEN—Three youths, two from Cornwall and the other from North Fincastle were injured last night when a 1962 Valiant cut the road between the ferry terminal at Borden.

Blair Wendell, Boer, Cornwall, said to have been the driver; Blair Frizzell, Cornwall and Donald Ross of North Fincastle, all in the front seat of the vehicle hit the curb of the road, bounced to the opposite side of the road and went over a fairly steep embankment.

The car is estimated to be a total loss by the Borden detachment of the RCMP. The Borden Funeral Home ambulance, Summerside, was called and the patients taken to the Prince County Hospital. Dr. J. C. Bonnell, Bedouque was called to the scene of the accident and they were treated by Dr. S. R. Cameron of Summerside at the hospital.

A large police hearing of the parking space for its cars. The old Hamilton residence located immediately to the east of the annex site will be torn down and this area will be used as a parking lot.

The car was proceeding toward the ferry at the Borden pier at what the driver reports as not an excessive rate of speed. Donald Ross was admitted to hospital with a broken left hand. It could not be learned if the other two would be admitted last night.

In cases where a man was ordered not to return to Lennox Island, to keep the peace and to be good behaved and to make restitution for medical and hospital expenses incurred by the incident.

Both men are said to be residents of Scotchfort.

Small House Burns Near Miscouche

SUMMERSIDE—The small home of Ernest Cannon, Miscouche RR, located on the N. Nicholas road, and its contents were quickly destroyed by fire around noon yesterday while Mr. Cannon was away.

The fire of undetermined origin was first noticed by a next door neighbour who had to run about a half-mile to the nearest telephone to summon the Miscouche fire department.

However the flames, fanned by a high wind, had enveloped the home when the firemen arrived and it was too late to save the home or its contents.

This is the second time Mr. Cannon has lost his home to fire within the last two years. His former residence at lives Point burned to the ground early in 1960.

PRINCESS-PAT DRIVE-IN THEATRE Thursday, Aug. 16

"HEY LET'S TWIST" Show at Dusk

FOR... ALL YOUR CAR NEEDS!

Robell Engines, Automotives, Generators, Starters, Pumps, Belts, Cranks, Water Pumps, Radiators, etc. etc. etc. and accessories for '62 models.

Stewart Motors 254 St. George St. 4-6279

Last of the BIG TIME SPENDERS

We will buy your used tires at Highest Prices to give you Top Value on your New Tires or Retreads.

TANTON TIRE 152 Kent St. Dial 4-5374

GOOD-YEAR

REAL OLD ISLAND CHEESE 59c

FRASER'S ISLAND BONELESS CHICKEN 69c

FLAVOR PAK 20 OZ. TIN 39c

PEAS 39c

SNOWFLAKE SHORTENING 25 lb.

TASTY LEAN PORK CHOPS 79c

OUR OWN SLICED DEVON BACON 73c

BRISK TOOTH PASTE 29c

LARGE SIZE GIANT SIZE 49c

BABY CLAMS 31c

COLGATE'S TOILET SOAP 25c

REAL OLD ISLAND CHEESE 59c

FRASER'S ISLAND BONELESS CHICKEN 69c

FLAVOR PAK 20 OZ. TIN 39c

PEAS 39c

BRISK TOOTH PASTE 29c

LARGE SIZE GIANT SIZE 49c

BABY CLAMS 31c

COLGATE'S TOILET SOAP 25c

REAL OLD ISLAND CHEESE 59c

FRASER'S ISLAND BONELESS CHICKEN 69c

FLAVOR PAK 20 OZ. TIN 39c

PEAS 39c

BRISK TOOTH PASTE 29c

LARGE SIZE GIANT SIZE 49c

BABY CLAMS 31c

COLGATE'S TOILET SOAP 25c

REAL OLD ISLAND CHEESE 59c

FRASER'S ISLAND BONELESS CHICKEN 69c

FLAVOR PAK 20 OZ. TIN 39c

PEAS 39c

BRISK TOOTH PASTE 29c

LARGE SIZE GIANT SIZE 49c

BABY CLAMS 31c

COLGATE'S TOILET SOAP 25c

REAL OLD ISLAND CHEESE 59c

FRASER'S ISLAND BONELESS CHICKEN 69c

FLAVOR PAK 20 OZ. TIN 39c

PEAS 39c

BRISK TOOTH PASTE 29c

LARGE SIZE GIANT SIZE 49c

BABY CLAMS 31c

COLGATE'S TOILET SOAP 25c

REAL OLD ISLAND CHEESE 59c

FRASER'S ISLAND BONELESS CHICKEN 69c

FLAVOR PAK 20 OZ. TIN 39c

PEAS 39c

BRISK TOOTH PASTE 29c

LARGE SIZE GIANT SIZE 49c

BABY CLAMS 31c

COLGATE'S TOILET SOAP 25c

REAL OLD ISLAND CHEESE 59c

FRASER'S ISLAND BONELESS CHICKEN 69c

FLAVOR PAK 20 OZ. TIN 39c

PEAS 39c

BRISK TOOTH PASTE 29c

LARGE SIZE GIANT SIZE 49c

BABY CLAMS 31c

COLGATE'S TOILET SOAP 25c

REAL OLD ISLAND CHEESE 59c

FRASER'S ISLAND BONELESS CHICKEN 69c

FLAVOR PAK 20 OZ. TIN 39c

PEAS 39c

BRISK TOOTH PASTE 29c

LARGE SIZE GIANT SIZE 49c

BABY CLAMS 31c

COLGATE'S TOILET SOAP 25c

REAL OLD ISLAND CHEESE 59c

FRASER'S ISLAND BONELESS CHICKEN 69c

FLAVOR PAK 20 OZ. TIN 39c

PEAS 39c

BRISK TOOTH PASTE 29c

LARGE SIZE GIANT SIZE 49c

BABY CLAMS 31c

COLGATE'S TOILET SOAP 25c

REAL OLD ISLAND CHEESE 59c

FRASER'S ISLAND BONELESS CHICKEN 69c

FLAVOR PAK 20 OZ. TIN 39c

PEAS 39c

BRISK TOOTH PASTE 29c

LARGE SIZE GIANT SIZE 49c

BABY CLAMS 31c

COLGATE'S TOILET SOAP 25c

REAL OLD ISLAND CHEESE 59c

FRASER'S ISLAND BONELESS CHICKEN 69c

FLAVOR PAK 20 OZ. TIN 39c

PEAS 39c

BRISK TOOTH PASTE 29c

LARGE SIZE GIANT SIZE 49c

BABY CLAMS 31c

COLGATE'S TOILET SOAP 25c

REAL OLD ISLAND CHEESE 59c

FRASER'S ISLAND BONELESS CHICKEN 69c

FLAVOR PAK 20 OZ. TIN 39c

PEAS 39c

BRISK TOOTH PASTE 29c

LARGE SIZE GIANT SIZE 49c

BABY CLAMS 31c

COLGATE'S TOILET SOAP 25c

REAL OLD ISLAND CHEESE 59c

FRASER'S ISLAND BONELESS CHICKEN 69c

FLAVOR PAK 20 OZ. TIN 39c

PEAS 39c

BRISK TOOTH PASTE 29c

LARGE SIZE GIANT SIZE 49c

BABY CLAMS 31c

COLGATE'S TOILET SOAP 25c

REAL OLD ISLAND CHEESE 59c

FRASER'S ISLAND BONELESS CHICKEN 69c

FLAVOR PAK 20 OZ. TIN 39c

PEAS 39c

BRISK TOOTH PASTE 29c

LARGE SIZE GIANT SIZE 49c

BABY CLAMS 31c

COLGATE'S TOILET SOAP 25c

REAL OLD ISLAND CHEESE 59c

FRASER'S ISLAND BONELESS CHICKEN 69c

FLAVOR PAK 20 OZ. TIN 39c

PEAS 39c

BRISK TOOTH PASTE 29c

LARGE SIZE GIANT SIZE 49c

BABY CLAMS 31c

COLGATE'S TOILET SOAP 25c

REAL OLD ISLAND CHEESE 59c

FRASER'S ISLAND BONELESS CHICKEN 69c

FLAVOR PAK 20 OZ. TIN 39c

PEAS 39c

BRISK TOOTH PASTE 29c

LARGE SIZE GIANT SIZE 49c

BABY CLAMS 31c

COLGATE'S TOILET SOAP 25c

REAL OLD ISLAND CHEESE 59c

FRASER'S ISLAND BONELESS CHICKEN 69c

FLAVOR PAK 20 OZ. TIN 39c

PEAS 39c

BRISK TOOTH PASTE 29c

LARGE SIZE GIANT SIZE 49c

BABY CLAMS 31c

COLGATE'S TOILET SOAP 25c

REAL OLD ISLAND CHEESE 59c

FRASER'S ISLAND BONELESS CHICKEN 69c

FLAVOR PAK 20 OZ. TIN 39c

PEAS 39c

BRISK TOOTH PASTE 29c

LARGE SIZE GIANT SIZE 49c

BABY CLAMS 31c

COLGATE'S TOILET SOAP 25c

REAL OLD ISLAND CHEESE 59c

FRASER'S ISLAND BONELESS CHICKEN 69c

FLAVOR PAK 20 OZ. TIN 39c

PEAS 39c

BRISK TOOTH PASTE 29c

LARGE SIZE GIANT SIZE 49c

BABY CLAMS 31c

COLGATE'S TOILET SOAP 25c

REAL OLD ISLAND CHEESE 59c

FRASER'S ISLAND BONELESS CHICKEN 69c

FLAVOR PAK 20 OZ. TIN 39c

PEAS 39c

BRISK TOOTH PASTE 29c

LARGE SIZE GIANT SIZE 49c

BABY CLAMS 31c

COLGATE'S TOILET SOAP 25c

REAL OLD ISLAND CHEESE 59c

FRASER'S ISLAND BONELESS CHICKEN 69c

FLAVOR PAK 20 OZ. TIN 39c

PEAS 39c

BRISK TOOTH PASTE 29c

LARGE SIZE GIANT SIZE 49c

BABY CLAMS 31c

COLGATE'S TOILET SOAP 25c

REAL OLD ISLAND CHEESE 59c

FRASER'S ISLAND BONELESS CHICKEN 69c

FLAVOR PAK 20 OZ. TIN 39c

PEAS 39c

BRISK TOOTH PASTE 29c

LARGE SIZE GIANT SIZE 49c

BABY CLAMS 31c

COLGATE'S TOILET SOAP 25c

REAL OLD ISLAND CHEESE 59c

FRASER'S ISLAND BONELESS CHICKEN 69c

FLAVOR PAK 20 OZ. TIN 39c

PEAS 39c

BRISK TOOTH PASTE 29c

LARGE SIZE GIANT SIZE 49c

BABY CLAMS 31c

COLGATE'S TOILET SOAP 25c

REAL OLD ISLAND CHEESE 59c

FRASER'S ISLAND BONELESS CHICKEN 69c

FLAVOR PAK 20 OZ. TIN 39c

PEAS 39c

BRISK TOOTH PASTE 29c

LARGE SIZE GIANT SIZE 49c

BABY CLAMS 31c

COLGATE'S TOILET SOAP 25c

REAL OLD ISLAND CHEESE 59c

FRASER'S ISLAND BONELESS CHICKEN 69c

FLAVOR PAK 20 OZ. TIN 39c

PEAS 39c

BRISK TOOTH PASTE 29c

LARGE SIZE GIANT SIZE 49c

BABY CLAMS 31c

COLGATE'S TOILET SOAP 25c

REAL OLD ISLAND CHEESE 59c

FRASER'S ISLAND BONELESS CHICKEN 69c

FLAVOR PAK 20 OZ. TIN 39c

PEAS 39c

BRISK TOOTH PASTE 29c

LARGE SIZE GIANT SIZE 49c

BABY CLAMS 31c

COLGATE'S TOILET SOAP 25c

REAL OLD ISLAND CHEESE 59c

FRASER'S ISLAND BONELESS CHICKEN 69c

FLAVOR PAK 20 OZ. TIN 39c

PEAS 39c

BRISK TOOTH PASTE 29c

LARGE SIZE GIANT SIZE 49c

BABY CLAMS 31c

COLGATE'S TOILET SOAP 25c

REAL OLD ISLAND CHEESE 59c

FRASER'S ISLAND BONELESS CHICKEN 69c

FLAVOR PAK 20 OZ. TIN 39c

PEAS 39c

BRISK TOOTH PASTE 29c

LARGE SIZE GIANT SIZE 49c

BABY CLAMS 31c

COLGATE'S TOILET SOAP 25c

REAL OLD ISLAND CHEESE 59c

FRASER'S ISLAND BONELESS CHICKEN 69c

FLAVOR PAK 20 OZ