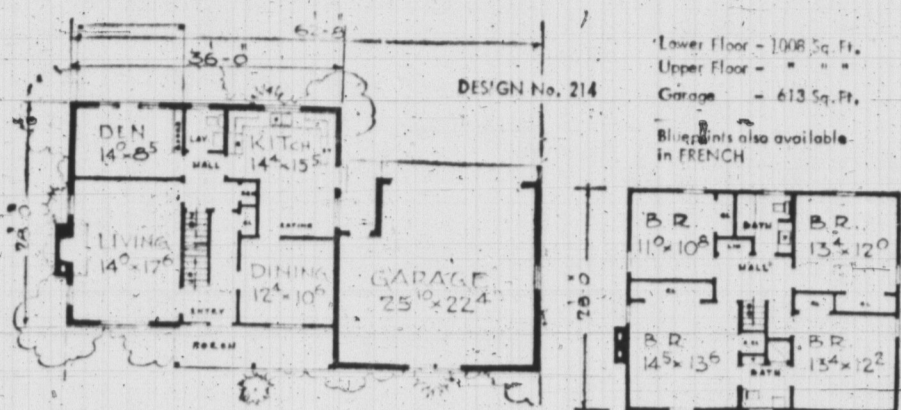
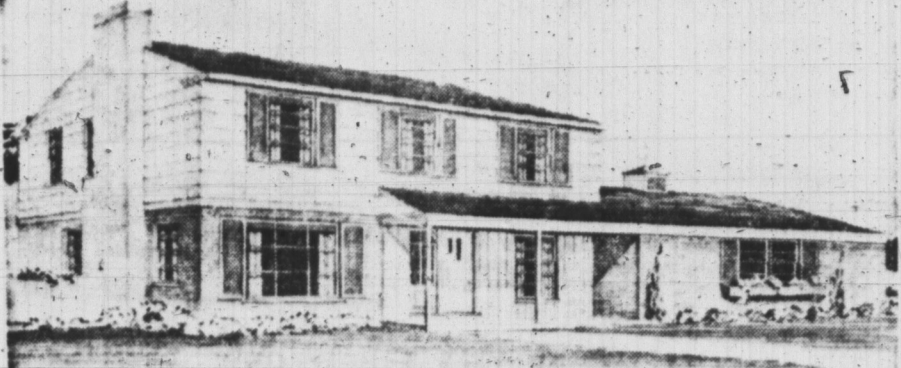


**GUARDIAN-PATRIOT HOME OF THE WEEK**



This fine Colonial home with its two-car garage and large kitchen would provide delightful living for a large family. There is an attractive fireplace in the living room. The den could serve as a family room, or even as an additional bedroom. Also included is a patio with an access door from the den. Upstairs are four bedrooms with ample closet space. All have windows arranged for cross ventilation. Construction is a combination of brick veneer and frame.

**First Aid For Ailing Houses**

**TILE OVER PAINTED FLOOR**  
QUESTION: Our basement floor has been painted with rubber base paint. Now I wish to put down asphalt tile in the recreation room. Should I remove the paint first?  
ANSWER: It is much safer to do this. The reason is that the tile adhesive often softens up the paint. So the tile won't adhere tightly. Freely admit that removing paint from a concrete floor is a long, tedious job. If you can rent a floor scraping machine, this will be quickest. But the rental services don't like the way concrete dust messes up the electric motors, so they'll often refuse to rent their machines for this purpose.

**PAINT PEELS OFF PIPE**  
QUESTION: The riser pipe carrying heat to apartments above looks terrible in the corner of our bedroom, because the paint constantly peels. Is there some trick to painting so that the paint will stay on?  
ANSWER: The trick is keeping other tenants from complaining about the heat being turned off for a couple of days. You see, such pipes — radiators, too — must be stone cold until the final coat of paint is thoroughly dry. Any heat will not only cause darkening but peeling, too.

**LEAKY SHOWER**  
QUESTION: When anyone takes a shower, there is leakage down to the basement. Should we call a plumber, or can you suggest a home-cure?  
ANSWER: Get the plumber over as quickly as possible, so that he can check the cause of the leak. It could even be a broken pipe or a faulty connection.

**SHAKY VENEER**  
QUESTION: On an old table, the veneer has chipped off along the edges. And in some spots on the surface it seems to bulge up. Can these faults be corrected easily?  
ANSWER: If you saved the pieces which fell off, the repair is easy enough. Sand off a 11 remnants of dried glue and cement the pieces back in place. If you didn't save them all, you may be able to buy a strip of veneer the same color. Which you can put along the edge. Consult a cabinet-maker or a hobbyist.

**VARNISHED COOKIE JAR**  
QUESTION: I have a cookie bucket made of pine, varnished on the outside. But how can I get rid of the odor of varnish, which works through and gets into the cookies too?  
ANSWER: First, leave the bucket outdoors for a month, and let the weather do its worst. If sun, wind and rain can't drive away the odor, remove the varnish completely, using paint remover. After neutralizing the remover, rub the bucket thoroughly with vegetable oil or linseed oil, wiping off all excess and let it dry for a week or so. The oil will preserve the wood.

**CLOUDY TABLE**  
QUESTION: I bid in a nice table at an auction. But the varnish has a cloudy look. How can I clear it up?  
ANSWER: Try wiping with a cloth wrung out in a solution of a tablespoon of cider vinegar in a pint of warm water. Rub with the grain as much as possible, and don't use too much pressure. Wipe off with soft, dry cloths. If this doesn't work, the cloudy appearance has probably worked through the finish itself. So you'll have to remove it with paint remover and re-finish.

**TAR STAINED CLOTHES**  
QUESTION: Is there any way to remove tar stains from heavy work clothes?  
ANSWER: Take time and patience. First, dissolve the tar by rubbing with crude creosote (often easier said than done). This will leave a yellow stain, which will eventually wash out with soap and water. If you can't get it all out, let a good dry cleaner take over — which is what I would suggest first.

**HOW TO OBTAIN DESIGN BOOK**

The latest design book entitled "101 Selected Suburban and Country Homes, Designed for Canadians," is now available at the offices of The Guardian and The Evening Patriot for \$1, tax free. This new edition includes color selection, etc., plus over 100 popular new designs to choose from. Also included are full designs and how to order blueprints.

shop or lumber yard, in that order.

To flatten the bulge, slice across it with a sharp blade, to permit working in some cement on a thin blade, such as a spatula. Cover the underside of the bulged area, then press back into position and weight down until the cement sets. Wipe up any cement which may ooze up through the slit.

**PLUMBING REPAIRS**  
QUESTION: I have a sink which works through and gets into the cookies too?  
ANSWER: Powdered lime proof concrete colors are available at any good masonry supplies dealer. They are mixed right in when the concrete is mixed. However, don't use more than 10 per cent of the dry weight of cement.

**PLANTING CUTTINGS**  
Next, insert the cuttings two to three inches deep in the medium and space them one inch apart in the box, in rows two to three inches wide according to their size and substance. A flat with the dimensions given will hold from 75 to 100 cuttings. When you have inserted all your cuttings water them well from above with a fine rose watering can.

but won't affect the cookies. If you prefer, you can paint the outside, using latex paint or enamel.

**COLORING CONCRETE**  
QUESTION: How do I go about coloring concrete?  
ANSWER: Powdered lime proof concrete colors are available at any good masonry supplies dealer. They are mixed right in when the concrete is mixed. However, don't use more than 10 per cent of the dry weight of cement.

**CLOUDY TABLE**  
QUESTION: I bid in a nice table at an auction. But the varnish has a cloudy look. How can I clear it up?  
ANSWER: Try wiping with a cloth wrung out in a solution of a tablespoon of cider vinegar in a pint of warm water. Rub with the grain as much as possible, and don't use too much pressure. Wipe off with soft, dry cloths. If this doesn't work, the cloudy appearance has probably worked through the finish itself. So you'll have to remove it with paint remover and re-finish.

**TAR STAINED CLOTHES**  
QUESTION: Is there any way to remove tar stains from heavy work clothes?  
ANSWER: Take time and patience. First, dissolve the tar by rubbing with crude creosote (often easier said than done). This will leave a yellow stain, which will eventually wash out with soap and water. If you can't get it all out, let a good dry cleaner take over — which is what I would suggest first.

**PLUMBING REPAIRS**  
QUESTION: I have a sink which works through and gets into the cookies too?  
ANSWER: Powdered lime proof concrete colors are available at any good masonry supplies dealer. They are mixed right in when the concrete is mixed. However, don't use more than 10 per cent of the dry weight of cement.

**PLANTING CUTTINGS**  
Next, insert the cuttings two to three inches deep in the medium and space them one inch apart in the box, in rows two to three inches wide according to their size and substance. A flat with the dimensions given will hold from 75 to 100 cuttings. When you have inserted all your cuttings water them well from above with a fine rose watering can.

**Propagating Shrubs By Summer Cuttings**

Modern materials and new techniques have made it possible for the average home owner to propagate some of the most ornamental deciduous shrubs from summer cuttings. One of the easiest ways of doing this is by the 'covered wagon' method, a technique involving the use of a propagating case, covered with polyethylene plastic, which because of the framing used, bears a resemblance to this wagon of bygone days.

To make this structure, get a box or a flat about 20 inches long, 14 inches wide and 4 inches deep. Fill the box to within half an inch of the rim with a mixture of equal parts sand and peat moss. Firm the medium into the box with a tamper made from a block of wood. Now get some willow twigs, thin bamboos or heavy gauge wire. Bend them like hoops and insert the ends in the inside of the flats, making a framework similar to that of a covered wagon. Have at hand some sheets of polyethylene or a number of laundry or fruit bags made from this material, to be attached to the frame after the cuttings have been inserted.

From now until the end of July is a good time to take green wood cuttings. Of course, you must have a source of material. If it is a hedge you need and you are visiting friends who have hedges of alpine currant, Amur privet, highbush cranberry, arctic willow or spirea; you could ask them for cuttings since they should be trimming their hedges soon. Similarly, if you want deciduous shrubs, get in touch with someone who has spirea, honeysuckle, variegated elder, snowberry, Somerset daphne, cotoneaster, forsythia, hydrangea, mock-orange, tamarix or weigela growing in their garden. These are all easy to root if taken in July.

**REQUIRED TOOLS**  
When you are ready to collect your cuttings, equip yourself with a pair of pruning shears, can

some labels twine or plastic wire and a polyethylene bag. Select leafy stems produced this year that snap easily, for this is the wood that is most likely to take root. Cut twigs, 10 inches to a foot long, which is much larger than your cuttings will be. Tie them in bundles, affix a label to each separate kind of twig clipping and then place them in the polyethylene bag. The cuttings will not wilt in this bag and you can safely leave them for several hours until you are ready to make the cuttings.

To prepare the cuttings select the semi-soft tip wood and make a slanting cut just below a node or the point from which a leaf or leaves arise. Remove the leaves from the two lower nodes and treat the cuttings by dipping the ends in a mild rooting compound. There are many kinds of these root inducing hormones on the market. They are available in powder and liquid forms and all of them make rooting faster.

**PLANTING CUTTINGS**  
Next, insert the cuttings two to three inches deep in the medium and space them one inch apart in the box, in rows two to three inches wide according to their size and substance. A flat with the dimensions given will hold from 75 to 100 cuttings. When you have inserted all your cuttings water them well from above with a fine rose watering can.

**STOCK CAR RACES**  
Sun., July 10  
LOWER MONTAGUE RACEWAY  
\$450 In Prize Money  
All cars must register by 1:30 p.m.  
SPECIAL EVENT!  
Old Timers Race

**THE TOP NAME ON EACH BALLOT**

1. MacKENZIE, KEITH OF SOURIS AUTOMOBILE DEALER	X
2. STEWART, BRUCE L. OF SOURIS OIL AGENT	
1. MacAULAY, PETER J. OF SOURIS, R. R. 1 FARMER	X
2. MacDONALD, DANIEL J. OF BOTHWELL FARMER	

**"KEEP FIRST KINGS FIRST"**

**ABERDEEN**  
**COFFEE SHOP & DAIRY BAR**  
AT ROCKY POINT ON ROUTE 19

OPENING SUNDAY JULY 10th. 11:00 A.M.

- Open 7 days a week from 11 a.m. to 11 p.m.
- Only Eating Place on the Rocky Point Beach Area.

BRING THE FAMILY ALONG AND ENJOY . . .

- Hamburgers
- Cheeseburgers
- Hot Dogs
- Cold Sandwiches
- Fish 'N Chips
- Shakes and Sundaes
- Ice Cream
- Soft Drinks
- Smokers' Supplies

The following Business Firms Are Pleased To Have Been Associated with the Construction of This Bright New Coffee Shop and Dairy Bar . . .

Michael Bros. "Jobbers" 240 Dorchester St. — Dial 4-8395	Spurgeon MacLennan "Plumbing and Pump Repairs" 22 Brackley Pt. Road — Dial 4-6329	Reid Construction Co. 27 St. Peters Road — Dial 3-2364
Newson Electric 161 Queen St. — Dial 4-8325	R. E. Mutch & Co. Ltd. 39 Queen St. — Dial 4-5584	Seaman's Beverages Ltd. 27 Water St. — Dial 4-6528