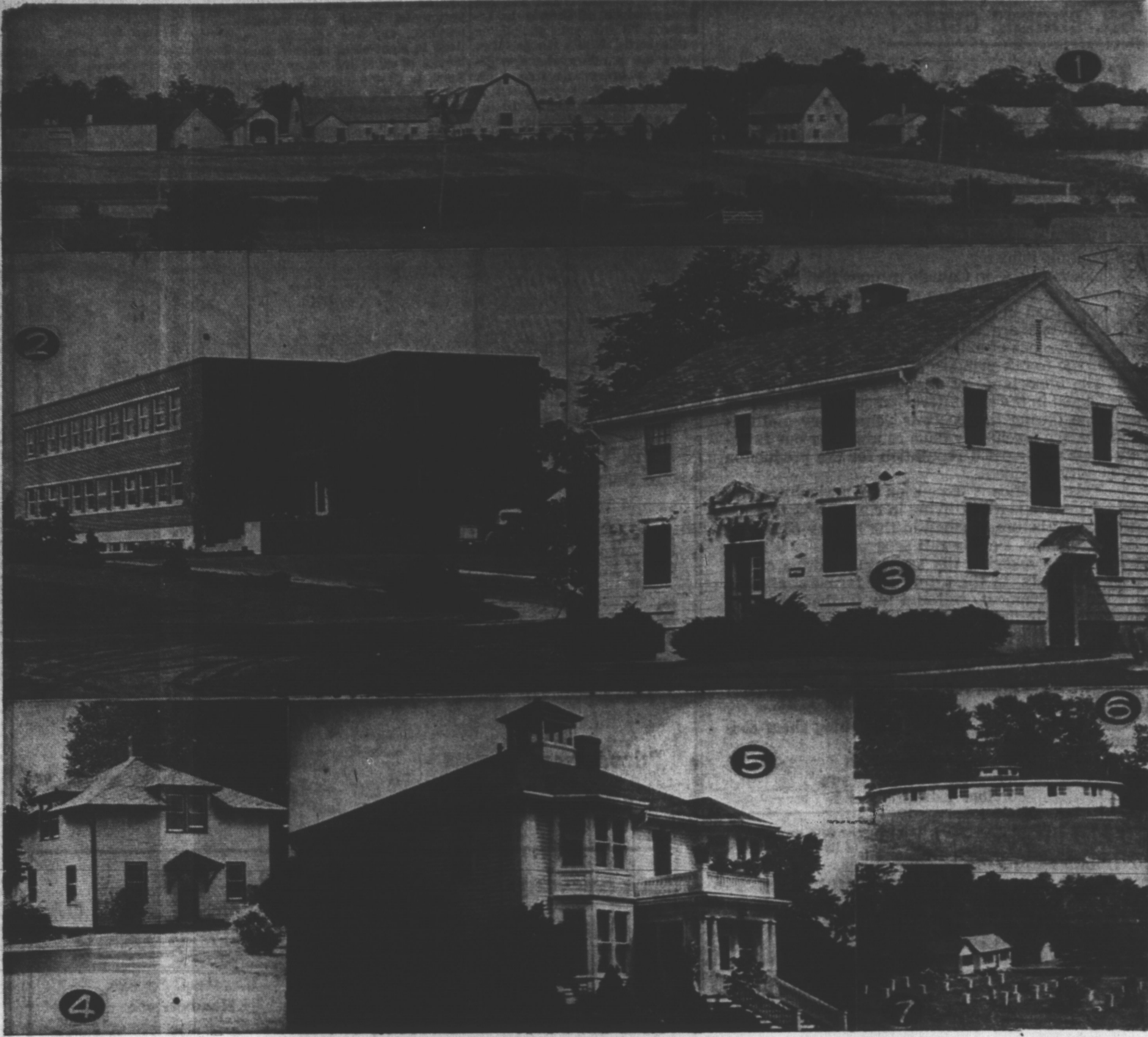


EXTENSIVE PLANT REQUIRED FOR EXPERIMENTAL FARM'S MULTIPLE FUNCTIONS



JUST LOOK HOW IT HAS GROWN

While the opposite page is devoted to the beginnings of the Experimental Farm at Charlottetown and the story of its progress through the years, pictures on this page offer a suggestion of its present size and scope of operation. As identified by number, the pictures show:

- 1—General view of barn area.
- 2—Canada Agriculture Research Laboratory, situated at Experimental Farm and associated with its activities.
- 3—Main offices of Experimental Farm.
- 4—Horticulture building.

5—Superintendent's residence. Once the home of Hon. J. C. Pope, premier of P.E.I. at the time of Confederation, the residence was built about 1820.

6—Poultry activities centre in this circular structure.

7—Aperture work is carried out in this area. Since its founding 50 years ago, in August 1909, the Experimental Farm has grown from 29 acres to 427 acres, with a corresponding increase in its facilities and the range of its activities.

ONLY AT *Taylor's* COULD YOU GET A VALUE LIKE THIS . . .



Taylor's
JEWELLERS LTD
121 Grafton Street Dial 4253

Do you need a NEW TRACTOR?



If you need a new tractor on your farm, but haven't the ready cash to buy one...FIL may be the answer to your need.

A B of M Farm Improvement Loan can put you at the wheel of the latest model very quickly. And there's nothing that saves money, time and work on a farm quite so much as a modern tractor.

If your proposition is sound, you can get a B of M Farm Improvement Loan for any type of equipment you need on your farm. Why not talk to your nearest B of M manager? He'll gladly show you how a Farm Improvement Loan can help you in your operations...and how little it costs.



Charlottetown Branch, 105-107 Grafton Street;
REG. G. BOYNE, Manager

BANK OF MONTREAL
Canada's First Bank

Moore & McLeod Ltd.



Mr. Farmer Says . . .
It Takes
TOUGH CLOTHING
To Do A Tough Job!
and

"Moore & McLeod's Have Exactly What It Takes"

Yes, that's right folks . . . when you want hard-wearing or dressy, tailored clothes and furnishings, whether it be for man or boy, you can shop with confidence at MOORE & McLEOD'S. It's here where you get those sturdy overalls, pants, shirts and smocks that wear so well . . . or those sport clothes the young lad likes.

When in town, drop in and see our selection of the latest and best in all types of clothing for both Dad and the Lad . . . whether it be for work or for rest . . . for school or play.

- ★ OVERALLS
- ★ WORK SHIRTS
- ★ SOCKS
- ★ WORK PANTS
- ★ TOPCOATS
- ★ SUITS
- ★ DRESS SHIRTS
- ★ TROUSERS
- ★ WINDBREAKERS

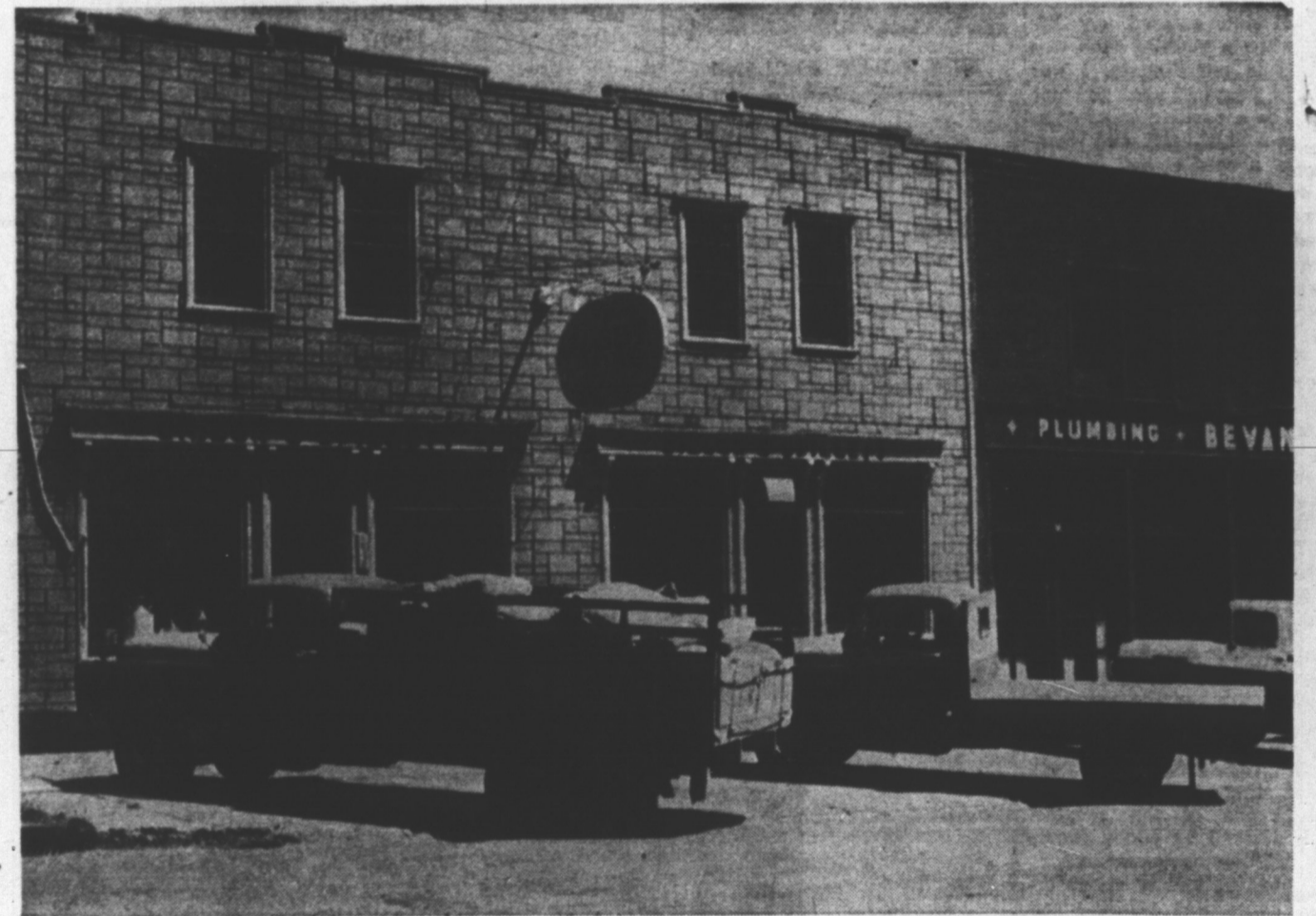
Our Department for BOYS is the LARGEST in the CITY



On the Island it's
MOORE & McLEOD LTD.
"Your Favorite Shopping Centre"



MASTER FEEDS
... for results that count!



Dillon and Spillett . . . one of the Island's longest established feed supply firms, handling "everything" for the farmer . . . and backing up their merchandise and service with the guarantee that built their business—"we aim to satisfy our customers". Their large warehouse on Prince Street, with fresh feed arriving every few days, ensures the best of service for both dealers and farmers.

OTHER ISLAND MASTER FEED DEALERS

- Prince Edward Island Fur Pool Ltd., Summerside—sold Master Feeds since the days of the silver fox!
- Pridham's Feed Service, Alberton—farmer dealer who realizes value from farmer and dealer viewpoint!
- Amalgamated Dairies Limited, Central Bedeque—your choice of feed, they likely have!
- Keith Kennedy, Kensington . . . the K. O. Kid . . . always fighting for a fair deal for farmers!
- Roland Hyde, Cornwall . . . started from scratch; now offers a most complete and satisfying feed service!
- Preston Rackham, Wheatley River . . . a farmer dealer, probably from Missouri! He has to prove everything himself to protect his customers!
- E. M. Cudmore, Oyster Bed Bridge . . . long noted for giving his customers top quality!
- Clark's Feed Service, Mt. Stewart . . . an ex-sailor, fought for a small country; now fighting for the small farmer!
- McGowan's Limited, Kilmuir . . . old established feed and general store . . . Kerry's first sale in P.E.I.

Best Wishes to the P. E. I. Experimental Farm on their 50th Anniversary!
For information on Master Feeds by bag, ton or carload . . . See these Dealers or contact the Maritime Representative IVAN KERRY . . . Box 741 . . . Charlottetown . . . Dial 5455