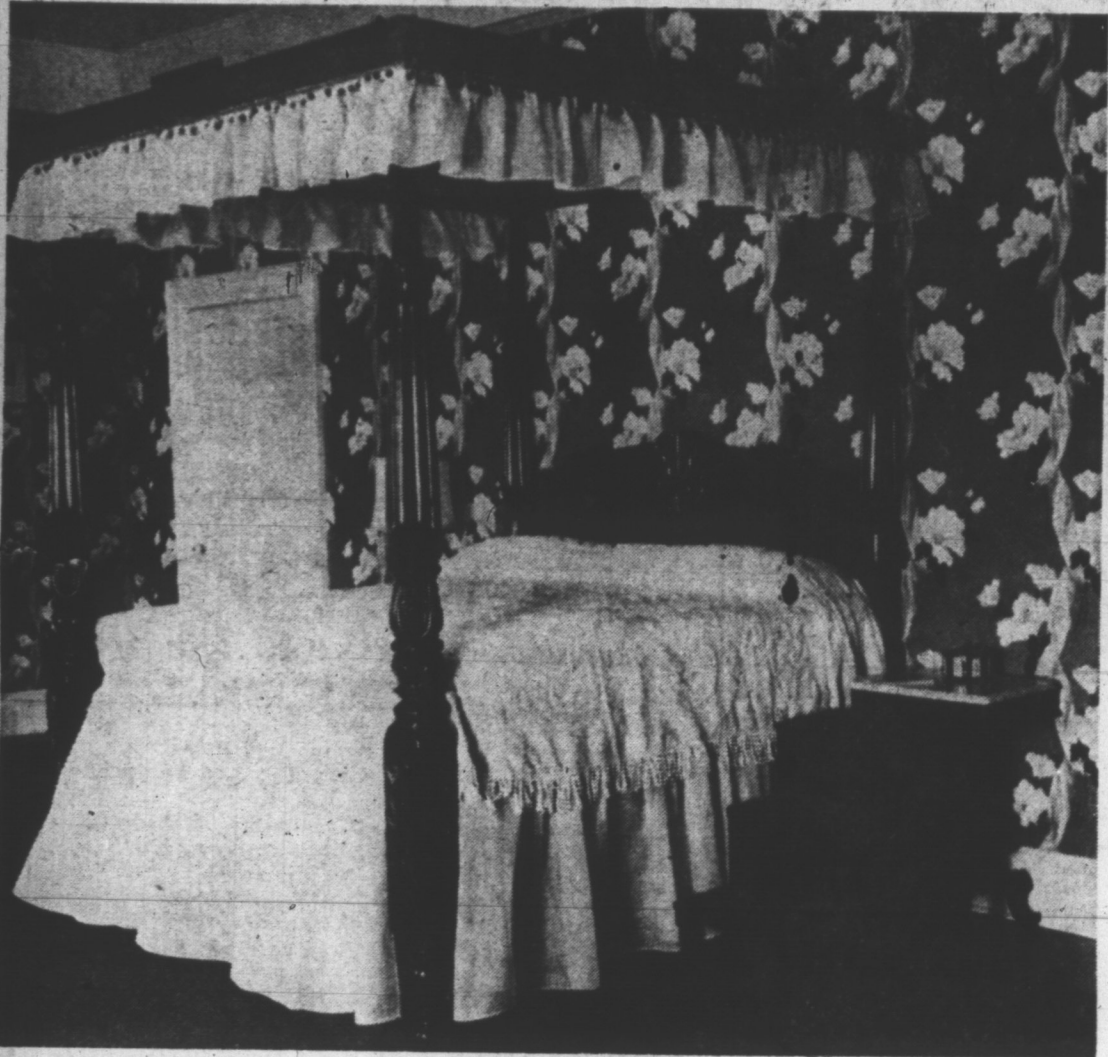
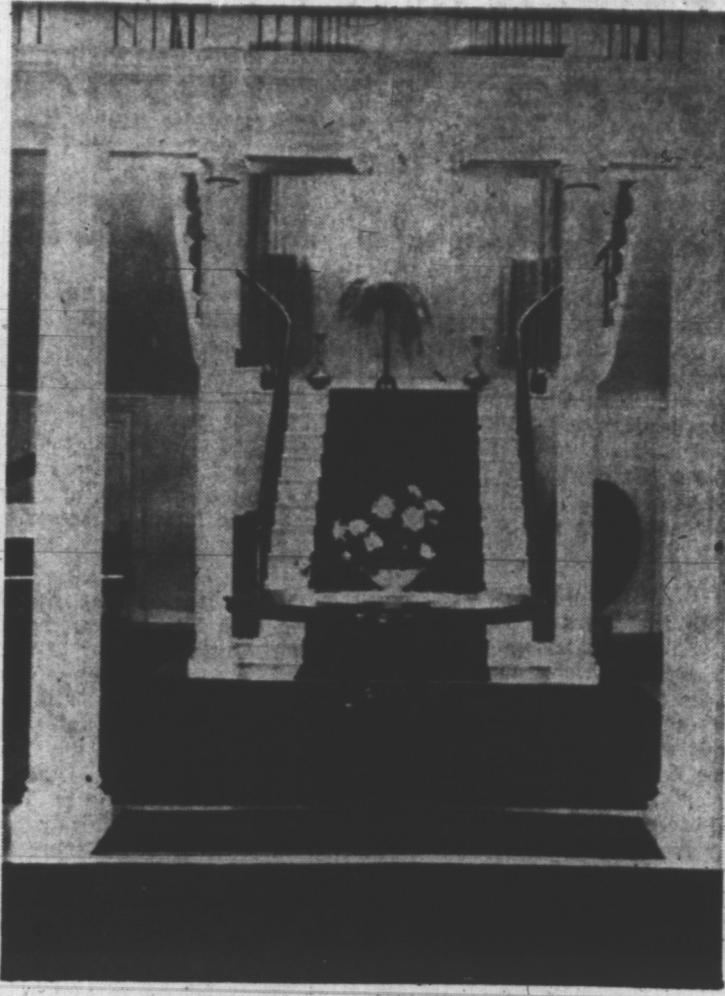


Historic Gov't House Nears 'Greatest Day'



HISTORIC BED PROVIDED FOR COMFORT OF HER MAJESTY



PILLARS FRAME MAIN STAIRWAY



GOVERNMENT HOUSE AFFORDS STATELY SOCIAL FUNCTIONS THURSDAY

Visit To Make Sovereign First In Residence Here

When Her Majesty Queen Elizabeth and His Royal Highness, Prince Philip take up residence in Government House, Prince Edward Island, a Household Guard will be mounted by the Prince Edward Island Regiment (RCAC). This regiment was formed following the re-organization of the non-permanent, active militia in the post war years. It carries on the traditions of the Prince Edward Island Highlanders (Black Watch) and the Prince Edward Island Lighthorse.

The Prince Edward Island Regiment (RCAC) is commanded by Lt. Colonel John Macdonald, CD. Col. Macdonald rose through the ranks having joined the P.E.I. Highlanders in pre-war years as a private. On mobilization of the unit in 1939 he was a lieutenant.

REPRESENTS KINGS
He volunteered for overseas with the North Nova Scotia Highlanders, a "D" Day battalion with the 9th Highland Brigade of the 3rd Canadian Division. Col. Macdonald was wounded leading a company near Caen. He represents Kings County (PC) in the House of Commons, Ottawa. His home is in Cardigan, P.E.I.

Guard Commander at Government House is Major Lloyd G. MacNeven, CD. He is officer commanding "B" squadron (Montague) of the Prince Edward Island Regiment (RCAC). Major MacNeven began his military career with the Prince Edward Island Highlanders during the second World War and for a time served with the Kent Regiment at Chatham, Ont. He enlisted as a private. His home is in Charlottetown.

ENLISTED IN RANKS
Capt. W.B. Peters, MM, CD, Officer of the Guard, is adjutant of the Prince Edward Island Regiment. He enlisted in the ranks of the P.E.I. Highlanders during World War Two and later volunteered for overseas with the Cape Breton Highlanders. He won the Military Medal while serving with his unit in Italy. His home is in Charlottetown.

The 35 piece band of the Prince Edward Island Regiment is commanded by Lieut. Charles E. MacGregor. He commenced his appointment in 1955 with the rank of warrant officer and was granted a commission in 1958.

During the last war, Lieut. MacGregor served as bandsman with the Royal Canadian Navy. The band is a familiar and colorful sight at all military parades here and enjoys a Maritime-wide reputation. Lieut. MacGregor resides in Charlottetown.



RCAC SUMMERSIDE MOUNTS ROYAL GUARDS
Lt. D. F. McGrath, DFC, is Guard Commander

Island Regiment To Form Queen's Household Guard

Out of all the great days that have been known by the Island's stately Government House, with its history of great occasions stretching back more than 124 years, next Thursday looms as its greatest day of all.

Arrival of Her Majesty Queen Elizabeth and His Royal Highness Prince Philip will bring the first occasion on which Canada's reigning Sovereign has been "in residence" here. When Her Majesty spends the night at Government House, she will be the first Monarch to do so.

The only former visit to the Island of a reigning Sovereign was in 1939, when the late King George VI and the present Queen Mother were here. Their stay was for a matter of four hours. They arrived at 12.30 p.m. on July 14, 1939, and left at 4.30 p.m. the same day.

HERE FOR A DAY
In contrast, Her Majesty and Prince Philip will be here more than 23 hours—virtually a full day and 20 hours longer than the Queen's father and mother, and will travel outside the capital city, through the Island's pastoral loveliness, for a distance of almost 50 miles. The former visit of the Queen, when she was here as Princess Elizabeth with Prince Philip, in 1951, was for 14 hours.

While "in residence" at Government House the Royal couple will be the guests of His Honor Lieut. Gov. F. W. Hyndman and Mrs. Hyndman.

In preparation for the occasion, Government House has had its inherent beauty and grace burnished to a state of perfection, and has been equipped exactly "to the taste of the Queen."

HISTORIC BED.
The bed that is in the quarters set apart for Her Majesty is known to have a long history, and was brought here recently from Montreal, where it was in storage, although the facts of its history have become obscured with the passage of the years.

Historic Government House with its pillared Colonial facade, for well over a century the official home of the representative of the Crown, beginning in the year 1834, is a familiar and attractive landmark in this Island province.

Government House was built under order of a commission appointed by the Legislature in 1831.

the contract being let on June 7, 1833, to Isaac Smith, Henry Smith (brothers) and Nathan Wright for the sum of \$2,434 pounds (about \$8,000 Island currency). Government House overlooks the waterfront and is an impressive sight, along with Fort Edward and the woods and grounds of Victoria Park, to the visitor entering Charlottetown Harbour from the sea.

WELCOME
QUEEN ELIZABETH II
and PRINCE PHILIP

Royal Yacht Britannia
BRANCH NO. 9
Canadian Legion
Kensington, P. E. I.

Welcome To The
ROYAL COUPLE

We rejoice with all Islanders on the occasion of the visit of Queen Elizabeth and Prince Philip

CUDMORE'S GROCERY
1 Elm Ave. Charlottetown

Welcome

EASTERN AUTO SUPPLY
Charlottetown

ROYAL VISIT 1959

Welcome Queen Elizabeth and Prince Philip; may your visit with us be a most memorable one.

J. H. ENGLAND,
Construction
and
ENGLAND'S ESSO SERVICE
West Royalty P. E. I.



EASY GRACIOUSNESS IS MARK OF MAIN DRAWING ROOM



DINING ROOM IS IN READINESS FOR PRIVATE DINNER



P. E. I. REGIMENT (RCAC) IS TO MOUNT HOUSEHOLD GUARD AT GOVERNMENT HOUSE

Greetings
To Their
ROYAL
HIGHNESSES
A. H. ROPER
Esso
Service Station
Charlottetown

LONG LIVE THE QUEEN
and Prince Philip

TOM DAVIES
TEXACO
Ch'town P. E. I.