

FEED MEASURING BOX

Three quarter inch thick water-proof glue fir plywood is used to make this handy feed measuring box. The bottom is 13 1/2" x 15 1/4"; the sides (two required) are 15 1/4" x 12" and the ends are 12" x 12". Two by two inch battens (actually 1 1/2" x 1 1/2") are nailed or glued and screwed around three edges of the ends. The sides are then attached and, lastly, the bottom. 36" long handles, shaped at both ends as shown are made of 2" x 2" stock. This box will hold exactly 1 cu. ft. of material. Mark one corner in 12 one-inch lines so smaller quantities can be measured.

FIRST AID
(Continued from page 8)

cover with aluminum foil, to act as a vapor barrier.
CARPET IN DAMP ROOM?
QUESTION: During the winter, we have the vaporizer running quite often in our children's bedroom. We had to cover the walls and ceiling with an enamel paint because they often became wet and the rubber base paint ran. Now we want to put a carpet and rubber padding in the room. Will this dampness, ever, in time effect the carpet or padding?
ANSWER: Certainly don't recommend this. Unless taken up and aired frequently, strong likelihood of mildew developing.

PAINT REMOVER
QUESTION: Is it possible to make my own paint and varnish remover? If so, how is it done?
ANSWER: Strong solutions of trisodium phosphate or washing soda and water will soften paint coatings so they can be removed. Or a paste type remover can be made by mixing dry trisodium phosphate with twice as much fuller's earth or whiting and moistening with water. This is applied in a one-half inch thick layer and allowed to remain about a half hour. Either the paste or liquid remover is followed by rinsing with clear water, after scraping off the paint.

DOG ODOR IN CONCRETE
QUESTION: We have a basement smell I cannot get rid of. Almost all our cellar is cement-floored. Through the years, dogs have eliminated on it and when the weather is damp, the smell is bad. I've washed the floor with every deodorizer I can find on the market, to no avail. I use a dehumidifier in the basement during humid weather. Do you know of anything that can be put on the basement floor to counteract the odor? Is there anything that can be used on the dirt part?
ANSWER: For the dirt part, I suggest removing the affected earth. Best solution would be to have a professional odor removal service do the job. Or use a combined detergent and odor counteragent available from this type of service. This kind of product attacks embedded odors.

QUESTION: On an enameled steel shower stall that has just been installed I have tried to remove the labels. I removed the outside coating, but can't remove the glue.
ANSWER: Try sponging it off by soaking with hot water. This frequently is enough to loosen the glue. Or use naphtha, being very careful of the fire hazard.

Grant Made To Dalhousie U

HALIFAX (CP)—The W. K. Kellogg Foundation of the United States has made a grant of \$420,000 in U.S. funds to Dalhousie University, it was announced.

The money is to provide a comprehensive health service library in the Sir Charles Tupper medical building. In terms of Canadian currency, the grant is worth about \$453,000.
Dr. C. B. Stewart, dean of Dalhousie's faculty of medicine, said it was by far the largest of several grants the Kellogg Foundation has made to the Halifax university in the last 15 years and would be valuable to the entire Atlantic region. He said it would allow Dalhousie to expand the medical library to about three times its present size and it will make possible the two-storey health sciences section in the 15-storey building. Dr. Stewart said the library will serve all the health areas at Dalhousie and function as a reference centre for the health professions of the four provinces.

WAS OLD, OLD WOMAN

TOKYO (AP)—China reports that its scientists have decided the Lantien ape man discovered last year is the oldest ape man ever found—and that it was an ape woman, not a man. Peking's New China news agency said paleontologists estimate the Lantien woman lived about 500,000 to 600,000 years ago. Scientists have generally accepted the Peking and Java man as the oldest proof of man's existence.

RIVER LONG USED
Sword makers at Toledo, Spain, have tempered their new blades in the Tagus River since the first century.

Teachers Get Some Blame In Drop-Outs

VANCOUVER (CP)—Part of the blame for drop-outs and vandals among lower-class students was placed on middle-class school teachers.

R. A. Helling of the University of Windsor said teachers—especially in Ontario—are strongly middle class and can't understand many of the problems of economically-deprived students.

He said these students often resent their middle-class teachers and take it out in school vandalism.

"If there is much vandalism at a school, the first place I would look is toward the teachers."

Prof. Helling told the Canadian Political Science Association that schools are biased toward middle-class students and the lower-class student has a hard time.

"His parents have no tradition of learning, and difficulties in the school cause him to drop out first mentally—staring out the window, trunkey—then physically," he said.

The association is meeting at the University of British Columbia as part of the learned societies conference in which 35 academic groups participate each year.

Dr. D. R. Pullman, of the University of New Brunswick told the discussion that persons living in poverty acquire attitudes that keep them poor.

He said the community status of fishermen on an east coast island goes up with the size of their unemployment insurance cheque—because only the richest work enough months of the year to qualify for the benefit.

He said Canada's underdeveloped areas have been largely ignored by sociologists in recent years. "A great deal of research is needed to find out just what is going on in these areas."

SHEEP LEARN SPANISH
HYTHE, England (CP)—Kent farmer Ray Edwards heard that farmers abroad have trouble making British animals understand them because they are accustomed to taking orders in English. Now he's giving his sheep Spanish lessons before they're exported.

Worried Burglar Choses Arrest

WOBURN, Mass. (AP)—An unemployed father of three, heeding his wife's plea to "choose arrest rather than death," has been given a five-month jail sentence for punishment and medical treatment.

Richard Vidito, 25, telephoned police after he and his wife learned on a radio broadcast that he may have been exposed to deadly high frequency radio energy during a burglary of the Comtek Incorporated laboratory Tuesday night.

After he pleaded guilty, Judge Francis P. Cullen sentenced him to prison where he is to be placed under observation for effects of the radio energy. Police said Vidito, in a burglary which netted \$5, knocked the lead shield off an ultra high frequency radio generator. An official of the laboratory said the energy rays could cause death within a week or 10 days.

AD BUSINESS GROWS
Advertising revenue from United States radio now is more than \$800,000,000, up from \$545,000,000 in 1955.

NEW
Niagara Polyram
stops blight on potatoes!

New Niagara Polyram fungicide gives excellent control of early and late blight of potatoes. Tomato fungicide, too, for control of Early and Late Blight, Anthracnose and Gray Leaf Spot.

NIAGARA BRAND CHEMICALS
44 SUMMER ST., CHARLOTTETOWN, P.E.I.
J. E. ARSENAULT, B.S.A., CHARLOTTETOWN 894-5369

GET POLYRAM FROM YOUR LOCAL NIAGARA DEALER

YOUR 1965 WOOL CLIP

Secure the utmost for your wool by patronizing your own organization.

Ship your wool FREIGHT COLLECT (not by express) to our Registered Wool Grading Station, Curling Rink, New Glasgow, Nova Scotia.

Just as soon as WOOL is received and graded, Cash Advance cheques will be mailed to you through our associate, the Maritime Co-operative Services at Moncton, New Brunswick, with Final Settlements to follow later.

Be sure and send your wool FREIGHT COLLECT as due to exceptional circumstances such charges will be absorbed by us. Sacks and twine are also available without charge to all our shippers from:

Tignish Co-operative Warehouse—Tignish
O'Leary Co-operative Warehouse—O'Leary
Wellington Co-operative Warehouse—Wellington

Souris Co-operative Warehouse—Souris
Maritime Co-operative Services—Moncton, N. B.

Maritime Wool Grading Station—New Glasgow, N. S.

At our Annual Meeting a Patronage Dividend of 2 1/2 cents per pound was declared payable to all our 1964 shippers. Cheques are being mailed direct.

MARITIME WOOL GRADING STATION
New Glasgow, N. S.

CANADIAN CO-OPERATIVE WOOL GROWERS LIMITED

Tourist Information Guide

Summer Cottons
sizes 7 - 24 1/2
The Gloria
Ladies' Wear
155 Gt. George St.

WELCOME TOURISTS
Your Bank for speedy efficient service is the Bank of Montreal with two offices to serve you.
Main Branch—105-7 Grafton St., Charlottetown, across the street from Confederation Centre Theatre.
Parkdale, P.E.I.—Corner St. Peter's Road and Palmer's Lane on Route 2 where ample parking is always available.

For the Best Shows on P.E.I. visit
STAR-LITE DRIVE-IN
3 miles east of Summerside

NORTH RIVER Drive-In Theatre
3 Miles from Charlottetown
On Trans-Canada Highway to Borden
● Speakers for 400 cars
● Shows seven nights a week
● Modern up to date Canteen
● First run movies

Blankets
Visitors Welcome
● Yarns ● Blankets
● Auto Robes
● Island Tartan Blankets
Made of 100% Virgin Wool
WM. CONDON and SONS
65 Queen St. Dial 4-8712
Charlottetown

ICE FOR ALL YOUR PICNIC NEEDS
MacLean's Grocery
Winstoe

WE RENT
Televisions, Fridges, Washers, Stoves

WE SELL
Toys, Furniture, Tires and all Appliances large and small.
FIRESTONE HOME & AUTO CO. LTD.
CHARLOTTETOWN
Next Door To Firestone's New Furniture and Appliance Store

THYMEWOOD
Stanhope P. E. I.
"For the best in handcrafts from the four Atlantic Provinces."

AND YOU FORGOT TO BUY FILM!
Don't let it happen to you, get KODAK FILM here!
McInnis Photo-Hobby
111 Kent St. Ch'town

CHILDREN'S PLAY CLOTHES
● Swim Suits
● Shorts
● Slacks
The Misses
Holmes & Bradley
Queens St. Ch'town

BUYING FURNITURE for the FOLKS at HOME?
See
Archer & MacDonald Ltd.
Open 'til 9 every night
Parkdale Dial 4-6345

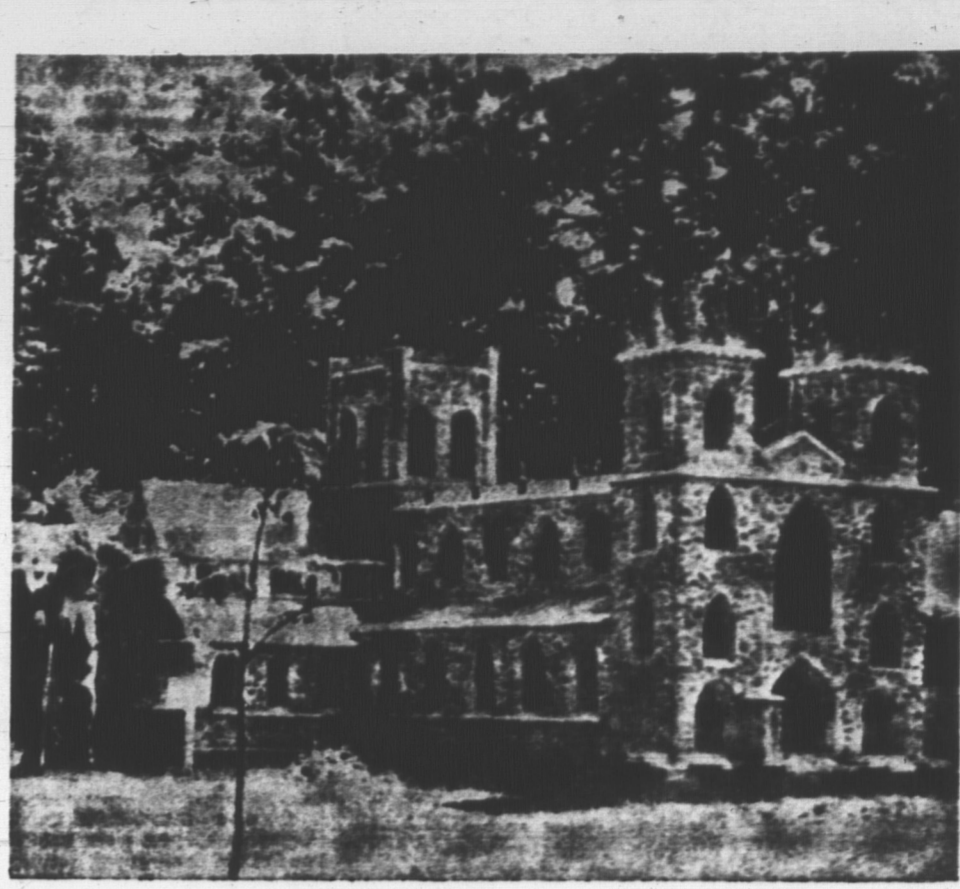
BILLIARDS
FOR RELAXATION
—at—
Ch'town Billiard Club
175 Gt. George Ph. 2-2167

● SUNTAN LOTIONS
● FIRST AID NEEDS
● SOUVENIRS
SHERWOOD DRUG SUNDRIES
Sherwood Shopping Centre
St. Peter's Road

FILMS
All Types
● Souvenirs
● Toiletries — most all makes
● Bathing Caps
● Swim goggles and fins
PRESCRIPTIONS PROMPTLY FILLED
Dial 3237
FOLEY'S DRUG STORE
309 Water St. S' side

When Thirst Says **STOP**
Start really refreshed with
Seaman's Beverages
St Water St. Ch'town

The **Charlottetown** Welcomes you
Visit the Only
HEATED TERRACE GARDEN
In The Maritimes
Open daily 7 a.m. — 11 p.m.
Continental Cuisine — Fully Licensed Cocktail Lounge
100 Rooms with Bath and T.V.
Telephone 4-7871
Jan Wesel Grude your host.



WOODLEIGH REPLICAS
"A Touch of Britain on P.E.I."
One of the popular attractions for tourists on P.E.I. Don't miss it

Moore & McLeod Ltd.
4 Floors Of Quality Merchandise
on the island it's Moore & McLeod
Your Favorite Shopping Centre
119 Queen St., Charlottetown

- Ladies' Wear
- Men's Wear
- Children's Wear
- House Furnishings
- Tartans
- Souvenirs

Woodleigh Replicas
A Glimpse of Britain in P.E.I.
Located at Burlington near Kensington.
Open Daily Except Sundays
the finest shows to be seen on P.E.I. are at the

Parkview
Drive In Theatre
Brackley Point Road
Route 15
Show Nightly at Dusk
Snack Bar on Grounds

RIVER VIEW ESSO SERVICE
15 Miles from Borden
CRAPAUD, P.E.I.

"The home of Good Shoes Since 1920"
Put yourself in our SHOES!
LePage Shoe Co.

on your way to the **National Park** stop for
● All size Film
● Suntan Lotions
● First Aid Products
● Prescriptions
● Souvenirs
PARKDALE PHARMACY
St. Peter's Road Parkdale
open daily 'til 10 p.m.

CHARLOTTETOWN DRIVING PARK
Racing Saturday night, June 12th
Old Home Week Aug. 16 to 21
The Charlottetown Driving Park and Provincial Exhibition Association

Just A Phone Call Away
RADIO CAB SERVICE
ED'S TAXI..Dial 894-6561-2

Sea-View Hotel
Souris P. E. I.
Close to beaches, European Plan, reasonable rates.
Phone 51 Souris

BELL'S BOOK & NOVELTY STORE
Souvenirs, English Bone China, Books, etc.
14 Summer St. S' side

Rite-Way Cleaners
● Quality cleaning
● In by 9, out by 5
● repairs, pressing
109 Fitzroy St. 4-7387

"Coin-operated"
CAR WASH
Spence & McLeod Ltd.
Eden St. Ch'town

S. R. Johnston Ltd.
ICE CUBES
For Your --- Picnic & Camping Needs
Large amounts sold at wholesale prices to hotel, motel, resort operators.
Agents for Tilden Rent a Car Service.
S. R. Johnston Ltd.
FINA Station
St. Peter's Road Parkdale
For Ice and Rental Service
Phone 2-1632

ADELLA'S
dramatic HATS for now and Fall
177 Grafton St. Ch'town

TOURISTS
For Your Groceries, Fruits and Vegetables
S. N. KAYS
57 Pownall St. Ch'town

BAY VISTA MOTOR INN
Route 6 (One Mile West) Cavendish National Park
Licensed Dining Room and Lounge
Dancing July and August
Wednesday & Saturday nights

WOOLWORTH'S
Queen St. Ch'town
GIFTS
To remember your visit to P.E.I.
Lunch Counter
Open daily from 9 a.m. for Breakfast.
Bakery Counter
All Goods Baked Fresh Daily in our own Kitchen.
Your Money Buys More at Woolworth's.

CHINESE & CANADIAN FOOD
● Full course dinners
● Air conditioned
● Take out service
Chicken Chow Mein \$1.25
Sweet and Sour
Spareribs \$1.00
Chicken Fried Rice \$1.00
Mushroom Foo Yung \$1.00
Beef Chop Suey \$1.00
We serve every kind of Chinese Dinner.
Dial 4-5150 and your dinner will be prepared as you drive to Lotus.

LOTUS CAFE
78 Queen Ch'town
"HONDA"
C-102
For fun all summer long
Keith Carmichael
Brackley Pl. Ed. Ch'town

● Souvenirs
● Gifts
● Novelties
From the Island's Largest Gift House
"GIFTARAMA"
Prince St. Ch'town

DIAL 4-8506
And place your message before thousands of Tourists