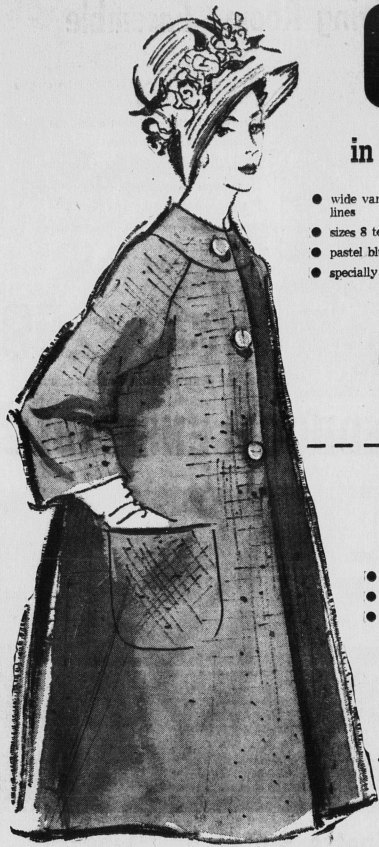


# ANNUAL MAY SALE

Both Stores, Charlottetown and Summerside

Tremendous Savings In Every Department - Sale Dates May 15th. To 25th!



## COATS

in lovely spring colors

- wide variety styles, including portrait necklines and "A" lines
- sizes 8 to 20, 5 to 15, 16 1/4 to 20 1/4
- pastel blue, mint green, red, yellow, beige and black
- specially priced during this sale

REGULAR 29.95

# 14.44

## SPRING and SUMMER SKIRTS

- lovely pleated aernels in white and pastel
- full skirt and slim fitting
- sizes are 8 to 20

Regular to 5.98

# 2.87

## SPRING DRESSES

- lovely fabrics including linens, cottons, knits, bouclés and woven cottons
- all sizes including women's
- lovely color selection
- specially priced during this sale

REGULAR 8.98 TO 29.95

# 5.99 TO 19.99



## HOSIERY - REDUCED TO CLEAR

- well known brands
- fine seams and seamless
- good colors
- sizes 8 1/2 to 11

Regularly 1.00 pr. to 1.50 pr.

# 67¢ PR. TO 1.00 PR.

## LINGERIE

- in nylon and cotton batiste
- baby dolls, shorty gowns and sleep coats
- double overlay nylons
- pink, blue, gold, white
- sizes small, medium, large

REGULAR TO 8.98

# 3.87



## SPRING HATS

- lovely new styles
- straws, flowered toques and silks
- all lovely new Spring colors
- specially priced during this sale

Regular 3.98 to 12.95

# 2.86 TO 8.66



## GIRLS' SPRING DRESSES

- cottons, nylons, taffetas, brocades and chiffon
- size ranges are 2 to 3x, 4 to 6x, and 7 to 14x
- lovely party dresses included

REGULAR 2.98 TO 16.95

# 1.99 TO 11.32



## GIRLS' SPRING COATS

- assortment of wools, flannels, laminates, denims
- specially priced during this sale
- size ranges include 2 to 3x, 4 to 6x, and 7 to 14x

REGULAR 13.95 TO 29.95

# 9.30 TO 19.99

## Boys' and Girls' SPRING COATS

- sizes 3 to 3x
- specially priced during this sale

Reg. 13.95 to 22.95

# 9.30 TO 15.30

## GIRLS' COTTON SKIRTS

- with side zipper, full gathered skirt
- colorful designs hand washable

Regular 4.98

# 2.87

## SLIMS

- well tailored in solids and plaids
- black, turquoise, beige, gold, blue
- reg. to 6.98

# 2.87

## COTTON JERSEY KNIT SWEATERS

- long line and 3/4 sleeves; red, turquoise, blue, gold, navy, black; sizes S-M-L; reg. 2.98.

# 1.77

## HANDBAGS

- woven fabrics, leather-like plastics; black, brown, beige; reg. 5.95

# 3.99

## JEWELLERY

- necklets and earrings; lovely Spring shades; reg. 2.00 to 5.00.

# 99c

## SHORTS & JAMCANS

- assorted fabrics; solid shades and plaids, sizes 10-18, reg. 2.98

# 1.99

## TOPS

- to match shorts and jamaicans; sizes 10-18, reg. 2.98.

# 1.99