

SARNIA BOYS ENJOY SAIL ON STREET

John and Patsy Barry sail down Houston Street in Sarnia's north end after extensive flooding struck Essex, Kent and Lambton counties in south eastern Ontario. Melting ice and snow were augmented by heavy rain this week. Pumps, graders, posthole diggers and tank trucks were used in Sarnia to give some relief to the newer unsewered residential areas which were inundated. (CP Photo)



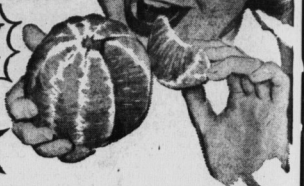
NOW! SQUEEZE THE MOST OUT OF

Southern Sunshine

WITH SUN-SOAKED CITRUS FRUITS

If your family hasn't enjoyed the sweet, tangy taste of fresh citrus fruit, it's high time they did! Now's your chance to stock up on sun-drenched oranges, grapefruit and lemons... an excellent dietary source of vitamin 'C'! This week DOMINION produce counters are piled high with colourful displays of delicious citrus fruit... juice-filled golden balls of sunshine that put bounce into mid-winter diets... that give you the good, clean, satisfying taste only fresh citrus fruits can produce!

AN EXCELLENT SOURCE OF VITAMIN 'C'



BIG CARLOAD LOTS JUST IN... PRICED FOR SAVINGS!

DAILY MARKET QUOTATIONS

SUMMARY
By THE CANADIAN PRESS
Toronto — Market slightly lower; moderate trading.
New York — Market higher; more active trading.
Montreal — Market mixed to lower; light trading.

CURRENCIES
DOLLAR (CP) — The U.S. dollar closed at a premium of 4.15-16 cents in terms of Canadian funds, up 1.32 from Tuesday's close. Pound sterling closed at 29.95 1/2, up 1/4.

NEW YORK
NEW YORK (AP) — The stock market resumed its rally Wednesday as volume swelled to the biggest total in about a month. Turnover was 3,670,000 shares compared with 3,200,000 Tuesday.

The Associated Press average of 60 stocks rose 1.20 to 363.50. An estimated \$1,800,000,000 was added to the quoted value of stocks listed on the New York Stock Exchange, based on the rise in the AP average.

At its best, Du Pont was up more than 4 points, touching a new high for 1961-62, but it closed with a net gain of 1 1/2. General Motors rose 1/4. Ford reported March sales thus far the best since 1957.

Among Canadian stocks on the New York Exchange, Aluminum Ltd. rose 1/4 and Canadian Pacific and Hudson Bay Mining 1/4. Dome Mines, Distillers, Seagraves and McIntyre Porcupine lost 1/4.

American Stock Exchange prices were mixed. Among Canadian stocks, Jupiter Corp. rose 1/4. Mobylexide 1-16 and Preston 3-16. Brazilian Traction, Shawinigan and Scurry Rainbow Oil lost 1/4 and Eureka 1-32.

MONTREAL
MONTREAL (CP) — Stocks were mixed in moderate trading on the Montreal and Canadian exchanges Wednesday. Losses had a slim edge on gains 88 to 80.

ECZEN ITCH
FOR USE IN SHEAFFERS' CARTRIDGE FOUR-FOLD FLEX PRICE 98c

MINOR TARIFFS
Walker fell 1/4 to 58 1/2, Canadian Breweries closed 1/4 to 12 1/2 and Industrial Casseaux lost 1/4 to 22. Hudson Bay Company was untraded.

MONTEAL CLOSING STOCKS
By THE CANADIAN PRESS
Montreal Stock Exchange—March 14 Complete tabulation of Wednesday transactions. (Quotations in cents unless marked \$—or \$100—indicated, \$—to—rights, \$—to—warrants. Not change in bid from previous day's closing sale.)

Stock	High	Low	Close
Alumina	405 1/2	405 1/2	405 1/2
Aluminum	217 1/2	217 1/2	217 1/2
Alum. Imp.	119 1/2	119 1/2	119 1/2
Anglo	20 1/2	20 1/2	20 1/2
Bank of Montreal	110 1/2	110 1/2	110 1/2
Bank of New York	100 1/2	100 1/2	100 1/2
Bank of Toronto	100 1/2	100 1/2	100 1/2
Bank of Victoria	100 1/2	100 1/2	100 1/2
Bank of Western	100 1/2	100 1/2	100 1/2
Bank of Commerce	100 1/2	100 1/2	100 1/2
Bank of Nova Scotia	100 1/2	100 1/2	100 1/2
Bank of Montreal (S)	100 1/2	100 1/2	100 1/2
Bank of Montreal (N)	100 1/2	100 1/2	100 1/2
Bank of Montreal (E)	100 1/2	100 1/2	100 1/2
Bank of Montreal (W)	100 1/2	100 1/2	100 1/2
Bank of Montreal (S)	100 1/2	100 1/2	100 1/2
Bank of Montreal (N)	100 1/2	100 1/2	100 1/2
Bank of Montreal (E)	100 1/2	100 1/2	100 1/2
Bank of Montreal (W)	100 1/2	100 1/2	100 1/2
Bank of Montreal (S)	100 1/2	100 1/2	100 1/2
Bank of Montreal (N)	100 1/2	100 1/2	100 1/2
Bank of Montreal (E)	100 1/2	100 1/2	100 1/2
Bank of Montreal (W)	100 1/2	100 1/2	100 1/2
Bank of Montreal (S)	100 1/2	100 1/2	100 1/2
Bank of Montreal (N)	100 1/2	100 1/2	100 1/2
Bank of Montreal (E)	100 1/2	100 1/2	100 1/2
Bank of Montreal (W)	100 1/2	100 1/2	100 1/2
Bank of Montreal (S)	100 1/2	100 1/2	100 1/2
Bank of Montreal (N)	100 1/2	100 1/2	100 1/2
Bank of Montreal (E)	100 1/2	100 1/2	100 1/2
Bank of Montreal (W)	100 1/2	100 1/2	100 1/2
Bank of Montreal (S)	100 1/2	100 1/2	100 1/2
Bank of Montreal (N)	100 1/2	100 1/2	100 1/2
Bank of Montreal (E)	100 1/2	100 1/2	100 1/2
Bank of Montreal (W)	100 1/2	100 1/2	100 1/2
Bank of Montreal (S)	100 1/2	100 1/2	100 1/2
Bank of Montreal (N)	100 1/2	100 1/2	100 1/2
Bank of Montreal (E)	100 1/2	100 1/2	100 1/2
Bank of Montreal (W)	100 1/2	100 1/2	100 1/2
Bank of Montreal (S)	100 1/2	100 1/2	100 1/2
Bank of Montreal (N)	100 1/2	100 1/2	100 1/2
Bank of Montreal (E)	100 1/2	100 1/2	100 1/2
Bank of Montreal (W)	100 1/2	100 1/2	100 1/2
Bank of Montreal (S)	100 1/2	100 1/2	100 1/2
Bank of Montreal (N)	100 1/2	100 1/2	100 1/2
Bank of Montreal (E)	100 1/2	100 1/2	100 1/2
Bank of Montreal (W)	100 1/2	100 1/2	100 1/2
Bank of Montreal (S)	100 1/2	100 1/2	100 1/2
Bank of Montreal (N)	100 1/2	100 1/2	100 1/2
Bank of Montreal (E)	100 1/2	100 1/2	100 1/2
Bank of Montreal (W)	100 1/2	100 1/2	100 1/2
Bank of Montreal (S)	100 1/2	100 1/2	100 1/2
Bank of Montreal (N)	100 1/2	100 1/2	100 1/2
Bank of Montreal (E)	100 1/2	100 1/2	100 1/2
Bank of Montreal (W)	100 1/2	100 1/2	100 1/2
Bank of Montreal (S)	100 1/2	100 1/2	100 1/2
Bank of Montreal (N)	100 1/2	100 1/2	100 1/2
Bank of Montreal (E)	100 1/2	100 1/2	100 1/2
Bank of Montreal (W)	100 1/2	100 1/2	100 1/2
Bank of Montreal (S)	100 1/2	100 1/2	100 1/2
Bank of Montreal (N)	100 1/2	100 1/2	100 1/2
Bank of Montreal (E)	100 1/2	100 1/2	100 1/2
Bank of Montreal (W)	100 1/2	100 1/2	100 1/2
Bank of Montreal (S)	100 1/2	100 1/2	100 1/2
Bank of Montreal (N)	100 1/2	100 1/2	100 1/2
Bank of Montreal (E)	100 1/2	100 1/2	100 1/2
Bank of Montreal (W)	100 1/2	100 1/2	100 1/2
Bank of Montreal (S)	100 1/2	100 1/2	100 1/2
Bank of Montreal (N)	100 1/2	100 1/2	100 1/2
Bank of Montreal (E)	100 1/2	100 1/2	100 1/2
Bank of Montreal (W)	100 1/2	100 1/2	100 1/2
Bank of Montreal (S)	100 1/2	100 1/2	100 1/2
Bank of Montreal (N)	100 1/2	100 1/2	100 1/2
Bank of Montreal (E)	100 1/2	100 1/2	100 1/2
Bank of Montreal (W)	100 1/2	100 1/2	100 1/2
Bank of Montreal (S)	100 1/2	100 1/2	100 1/2
Bank of Montreal (N)	100 1/2	100 1/2	100 1/2
Bank of Montreal (E)	100 1/2	100 1/2	100 1/2
Bank of Montreal (W)	100 1/2	100 1/2	100 1/2
Bank of Montreal (S)	100 1/2	100 1/2	100 1/2
Bank of Montreal (N)	100 1/2	100 1/2	100 1/2
Bank of Montreal (E)	100 1/2	100 1/2	100 1/2
Bank of Montreal (W)	100 1/2	100 1/2	100 1/2
Bank of Montreal (S)	100 1/2	100 1/2	100 1/2
Bank of Montreal (N)	100 1/2	100 1/2	100 1/2
Bank of Montreal (E)	100 1/2	100 1/2	100 1/2
Bank of Montreal (W)	100 1/2	100 1/2	100 1/2
Bank of Montreal (S)	100 1/2	100 1/2	100 1/2
Bank of Montreal (N)	100 1/2	100 1/2	100 1/2
Bank of Montreal (E)	100 1/2	100 1/2	100 1/2
Bank of Montreal (W)	100 1/2	100 1/2	100 1/2
Bank of Montreal (S)	100 1/2	100 1/2	100 1/2
Bank of Montreal (N)	100 1/2	100 1/2	100 1/2
Bank of Montreal (E)	100 1/2	100 1/2	100 1/2
Bank of Montreal (W)	100 1/2	100 1/2	100 1/2
Bank of Montreal (S)	100 1/2	100 1/2	100 1/2
Bank of Montreal (N)	100 1/2	100 1/2	100 1/2
Bank of Montreal (E)	100 1/2	100 1/2	100 1/2
Bank of Montreal (W)	100 1/2	100 1/2	100 1/2
Bank of Montreal (S)	100 1/2	100 1/2	100 1/2
Bank of Montreal (N)	100 1/2	100 1/2	100 1/2
Bank of Montreal (E)	100 1/2	100 1/2	100 1/2
Bank of Montreal (W)	100 1/2	100 1/2	100 1/2
Bank of Montreal (S)	100 1/2	100 1/2	100 1/2
Bank of Montreal (N)	100 1/2	100 1/2	100 1/2
Bank of Montreal (E)	100 1/2	100 1/2	100 1/2
Bank of Montreal (W)	100 1/2	100 1/2	100 1/2
Bank of Montreal (S)	100 1/2	100 1/2	100 1/2
Bank of Montreal (N)	100 1/2	100 1/2	100 1/2
Bank of Montreal (E)	100 1/2	100 1/2	100 1/2
Bank of Montreal (W)	100 1/2	100 1/2	100 1/2
Bank of Montreal (S)	100 1/2	100 1/2	100 1/2
Bank of Montreal (N)	100 1/2	100 1/2	100 1/2
Bank of Montreal (E)	100 1/2	100 1/2	100 1/2
Bank of Montreal (W)	100 1/2	100 1/2	100 1/2
Bank of Montreal (S)	100 1/2	100 1/2	100 1/2
Bank of Montreal (N)	100 1/2	100 1/2	100 1/2
Bank of Montreal (E)	100 1/2	100 1/2	100 1/2
Bank of Montreal (W)	100 1/2	100 1/2	100 1/2
Bank of Montreal (S)	100 1/2	100 1/2	100 1/2
Bank of Montreal (N)	100 1/2	100 1/2	100 1/2
Bank of Montreal (E)	100 1/2	100 1/2	100 1/2
Bank of Montreal (W)	100 1/2	100 1/2	100 1/2
Bank of Montreal (S)	100 1/2	100 1/2	100 1/2
Bank of Montreal (N)	100 1/2	100 1/2	100 1/2
Bank of Montreal (E)	100 1/2	100 1/2	100 1/2
Bank of Montreal (W)	100 1/2	100 1/2	100 1/2
Bank of Montreal (S)	100 1/2	100 1/2	100 1/2
Bank of Montreal (N)	100 1/2	100 1/2	100 1/2
Bank of Montreal (E)	100 1/2	100 1/2	100 1/2
Bank of Montreal (W)	100 1/2	100 1/2	100 1/2
Bank of Montreal (S)	100 1/2	100 1/2	100 1/2
Bank of Montreal (N)	100 1/2	100 1/2	100 1/2
Bank of Montreal (E)	100 1/2	100 1/2	100 1/2
Bank of Montreal (W)	100 1/2	100 1/2	100 1/2
Bank of Montreal (S)	100 1/2	100 1/2	100 1/2
Bank of Montreal (N)	100 1/2	100 1/2	100 1/2
Bank of Montreal (E)	100 1/2	100 1/2	100 1/2
Bank of Montreal (W)	100 1/2	100 1/2	100 1/2
Bank of Montreal (S)	100 1/2	100 1/2	100 1/2
Bank of Montreal (N)	100 1/2	100 1/2	100 1/2
Bank of Montreal (E)	100 1/2	100 1/2	100 1/2
Bank of Montreal (W)	100 1/2	100 1/2	100 1/2
Bank of Montreal (S)	100 1/2	100 1/2	100 1/2
Bank of Montreal (N)	100 1/2	100 1/2	100 1/2
Bank of Montreal (E)	100 1/2	100 1/2	100 1/2
Bank of Montreal (W)	100 1/2	100 1/2	100 1/2
Bank of Montreal (S)	100 1/2	100 1/2	100 1/2
Bank of Montreal (N)	100 1/2	100 1/2	100 1/2
Bank of Montreal (E)	100 1/2	100 1/2	100 1/2
Bank of Montreal (W)	100 1/2	100 1/2	100 1/2
Bank of Montreal (S)	100 1/2	100 1/2	100 1/2
Bank of Montreal (N)	100 1/2	100 1/2	100 1/2
Bank of Montreal (E)	100 1/2	100 1/2	100 1/2
Bank of Montreal (W)	100 1/2	100 1/2	100 1/2
Bank of Montreal (S)	100 1/2	100 1/2	100 1/2
Bank of Montreal (N)	100 1/2	100 1/2	100 1/2
Bank of Montreal (E)	100 1/2	100 1/2	100 1/2
Bank of Montreal (W)	100 1/2	100 1/2	100 1/2
Bank of Montreal (S)	100 1/2	100 1/2	100 1/2
Bank of Montreal (N)	100 1/2	100 1/2	100 1/2
Bank of Montreal (E)	100 1/2	100 1/2	100 1/2
Bank of Montreal (W)	100 1/2	100 1/2	100 1/2
Bank of Montreal (S)	100 1/2	100 1/2	100 1/2
Bank of Montreal (N)	100 1/2	100 1/2	100 1/2
Bank of Montreal (E)	100 1/2	100 1/2	100 1/2
Bank of Montreal (W)	100 1/2	100 1/2	100 1/2
Bank of Montreal (S)	100 1/2	100 1/2	100 1/2
Bank of Montreal (N)	100 1/2	100 1/2	100 1/2
Bank of Montreal (E)	100 1/2	100 1/2	100 1/2
Bank of Montreal (W)	100 1/2	100 1/2	100 1/2
Bank of Montreal (S)	100 1/2	100 1/2	100 1/2
Bank of Montreal (N)	100 1/2	100 1/2	100 1/2
Bank of Montreal (E)	100 1/2	100 1/2	100 1/2
Bank of Montreal (W)	100 1/2	100 1/2	100 1/2
Bank of Montreal (S)	100 1/2	100 1/2	100 1/2
Bank of Montreal (N)	100 1/2	100 1/2	100 1/2
Bank of Montreal (E)	100 1/2	100 1/2	100 1/2
Bank of Montreal (W)	100 1/2	100 1/2	100 1/2
Bank of Montreal (S)	100 1/2	100 1/2	100 1/2
Bank of Montreal (N)	100 1/2	100 1/2	100 1/2
Bank of Montreal (E)	100 1/2	100 1/2	100 1/2
Bank of Montreal (W)	100 1/2	100 1/2	100 1/2
Bank of Montreal (S)	100 1/2	100 1/2	100 1/2
Bank of Montreal (N)	100 1/2	100 1/2	100 1/2
Bank of Montreal (E)	100 1/2	100 1/2	100 1/2
Bank of Montreal (W)	100 1/2	100 1/2	100 1/2
Bank of Montreal (S)	100 1/2	100 1/2	100 1/2
Bank of Montreal (N)	100 1/2	100 1/2	100 1/2
Bank of Montreal (E)	100 1/2	100 1/2	100 1/2
Bank of Montreal (W)	100 1/2	100 1/2	100 1/2
Bank of Montreal (S)	100 1/2	100 1/2	100 1/2
Bank of Montreal (N)	100 1/2	100 1/2	100 1/2
Bank of Montreal (E)	100 1/2	100 1/2	100 1/2
Bank of Montreal (W)	100 1/2	100 1/2	100 1/2
Bank of Montreal (S)	100 1/2	100 1/2	100 1/2
Bank of Montreal (N)	100 1/2	100 1/2	100 1/2
Bank of Montreal (E)	100 1/2	100 1/2	100 1/2
Bank of Montreal (W)	100 1/2	100 1/2	100 1/2
Bank of Montreal (S)	100 1/2	100 1/2	100 1/2
Bank of Montreal (N)	100 1/2	100 1/2	100 1/2
Bank of Montreal (E)	100 1/2	100 1/2	100 1/2
Bank of Montreal (W)	100 1/2	100 1/2	100 1/2
Bank of Montreal (S)	100 1/2	100 1/2	100 1/2