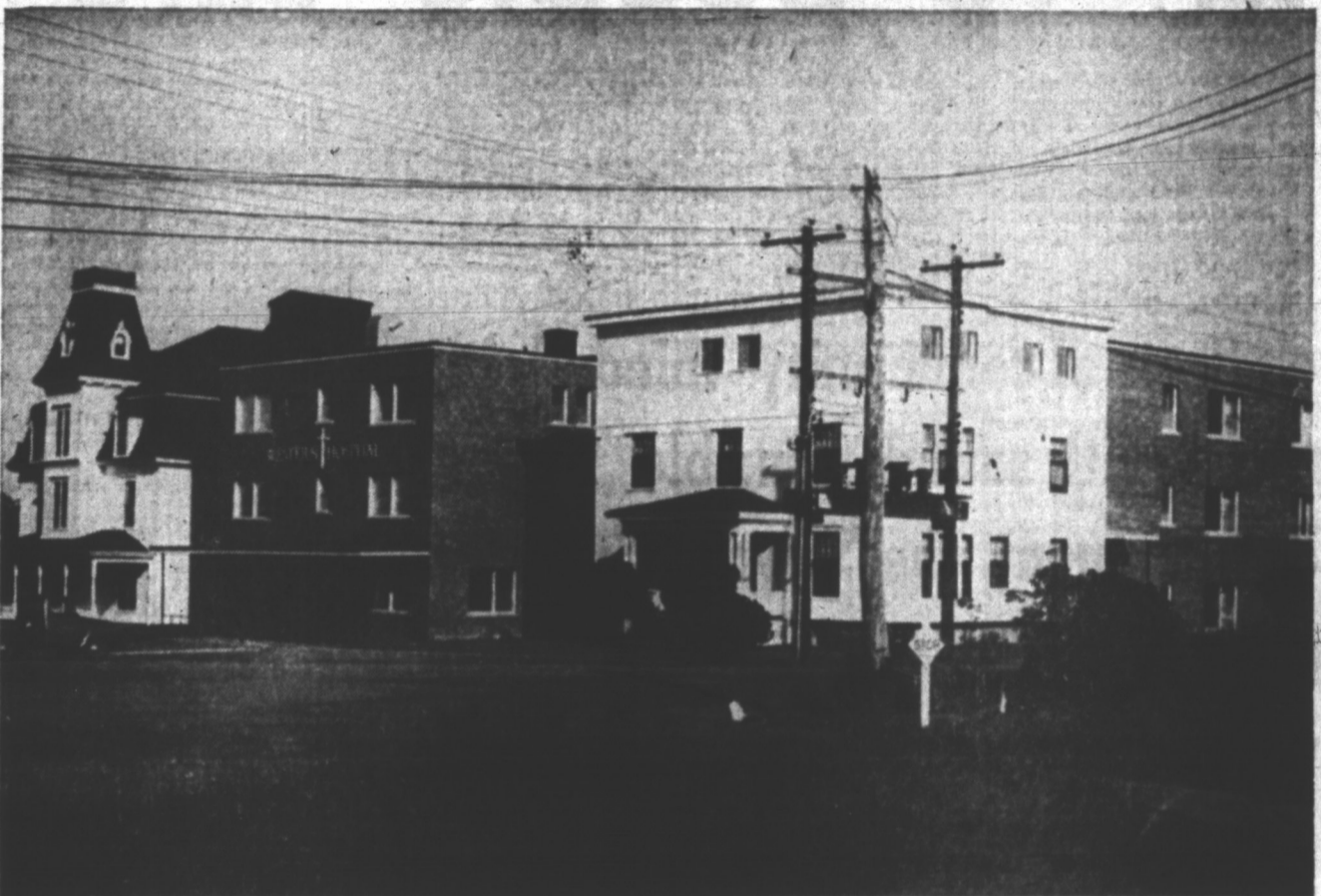
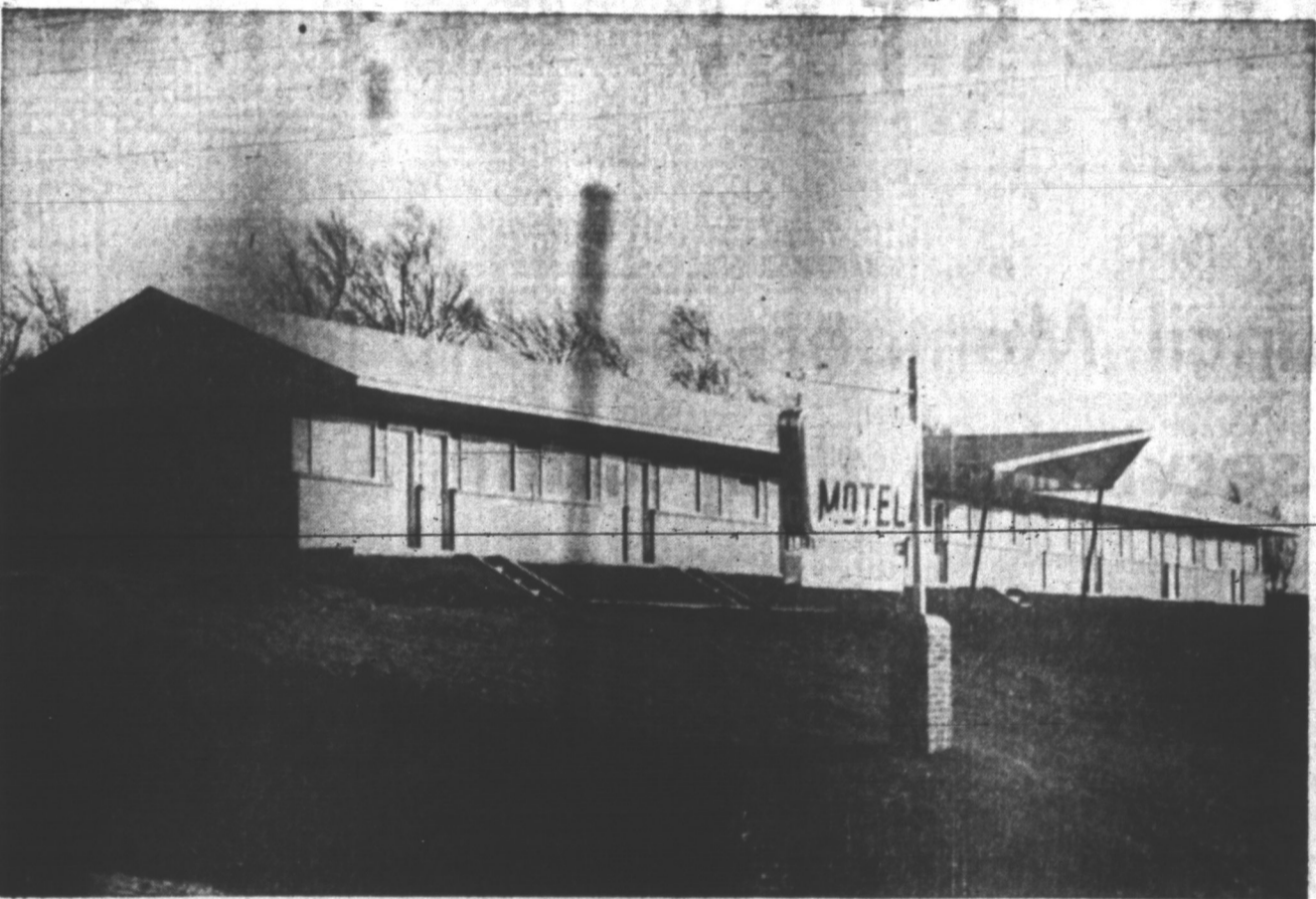


MINISTER OF EDUCATION OFFICIALLY OPENED REGIONAL SCHOOL IN DECEMBER



ADDITION TO WESTERN HOSPITAL DOUBLED ACCOMMODATION FOR PATIENTS



WESTERNER MOTEL EXPECTED TO GIVE WEST PRINCE LARGER TOURIST SHARE

Modern new buildings change Alberton's face

Alberton's main progressive features in 1961 were associated with construction. Last year saw the completion of two large building projects begun a marked progress in two others.

Late in 1959 the first sod for construction of a large new wing to the Western Hospital was turned by W. W. Currie, then mayor of the town. Work on the three-storey addition, which was to more than double the capacity of the hospital, was begun immediately and resumed in the spring of 1960. The large new section connects the original building with the nurses' home.

On the main floor of the addition are administration offices, lobby, board room, x-ray suite, laboratory, and out-patients' department with physio-therapy, surgery and examination room. On the second floor are two operating rooms, recovery rooms, pharmacy, central sup-

ply, private and semi-private rooms.

On the third floor is the maternity department with admittance, labor and delivery rooms, accommodation for patients in private, semi-private and ward beds, nursery with bassinets and incubators, and a formula room.

MODERN DECOR

All equipment, furnishings and decor are of the most modern type and additional equipment is being procured from time to time.

Official opening of the new hospital wing took place Nov. 15 when the cornerstone was laid by Dr. O.H. Phillips, MP and Dr. Hubert McNeill, provincial minister of health, declared the building open.

One month after opening of the new hospital wing, the Alberton district regional high school was opened. The cornerstone was laid by Dr. L. G. Dewar, minister of education, and

the building was declared officially open by John Rochford, chairman of the board of trustees.

The first sod for the school was turned by J. W. D. Campbell, MLA in August 1960.

The 200 x 58 foot building of masonry construction contains sufficient class rooms, well equipped laboratory, home economics room, library, principal's office, teachers' room, cloak rooms, washrooms and a spacious assembly hall. There is hot water heating, fluorescent lighting, vinyl asbestos floor tile and fire resistant ceiling tile.

Sixteen districts are served by the school which is staffed by seven teachers. In addition to the regular academic classes there is a commercial class and also a class for retarded children. The two latter were begun last fall and are making a distinct contribution to the community.

The third construction project, the Westerner Motel, was begun in September and is now open for business. To be operated on a year round basis, it will provide accommodation for the travelling public at all times and for tourists in the summer. Situated at the extreme west of the town overlooking a body of water, the twelve unit motel presents an attractive appearance and provides luxurious comfort. Its facilities include a modern restaurant. The owners are Creelman MacArthur and Peter Pope of Summerside and it is under the management of Mr. and Mrs. Charles A. Gordon.

A new federal building at the corner of Main and Poplar Streets is nearing completion. The 54 x 44 foot one-storey building has an exterior finished in vertical cedar siding, stone and brick facing with projecting bricks in pattern form. Accommodation will be provided for a

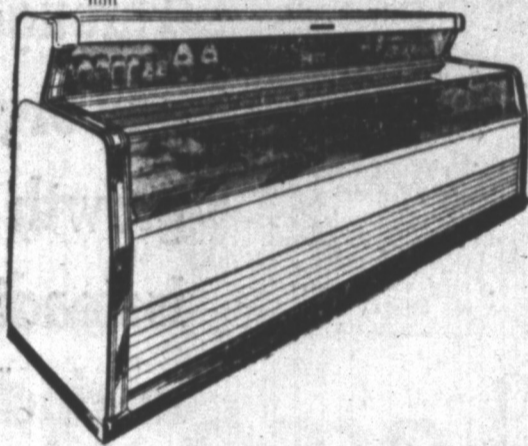


ONE OF BIGGEST PROJECTS UNDERTAKEN IN 1961 WAS FEDERAL BUILDING TO HOUSE GOV'T OFFICES

STOREY ELECTRIC LTD.

Expert Refrigeration Service

CONSULT US FOR TOP BRAND NAMES IN REFRIGERATION



- Hussmann
- Frigidaire Air Conditioning
- Kold Draft Ice-Cube-Makers
- Kelvinator

See Us For Expert Service On

Motor Repairs and Rewinding
Automatic Washer & Dryer
Refrigerators Domestic and Commercial

Electric Ranges
Electrical Appliances
House Wiring

Accredited suppliers for Lucky Dollar and Clover Farm Stores

STOREY ELECTRIC LTD.

Motor Rewinding — Electrical Contracting

Charlottetown Dial 4-7341

Dial 3005 Summerside

"No equipment is better than the installation and service behind it"

CUDMORE BUSINESS EQUIPMENT

One of Our Most Important Products In 12 years . . . Has Been Service!

This month, as we observe our 12th year in business, we look back and realize there have been many reasons for our success . . . but outstanding amongst them have been two main factors . . . service to all our customers . . . and the quality of the business machines we handle. We thank you, one and all, for your confidence in us . . . and in our lines of merchandise . . . and we look forward to a continued association between us and all who seek the very finest in business equipment.

Choose from Top Names In The Business Machine Field:

- Underwood-Olivetti business machines
- Victor calculating, adding and cash register machines
- Philips dictating and intercom machines
- Thermofax copy machines
- Ditto Duplicators and supplies
- Sweda multiple register cashiers
- Monroe calculating and book-keeping machines
- Continuous and snap-out forms
- Complete line of office equipment

CUDMORE BUSINESS EQUIPMENT

179 GRAFTON STREET

CHARLOTTETOWN

Dial 4-5631 for competent friendly service!