



NEW BANK OF MONTREAL WAS VALUED AT \$204,000

## Ch'town construction climbs to record \$7,000,000 high

With building permits amounting to \$7,306,700 being issued, 1963 was the "biggest year" of construction in Charlottetown's history," says City Engineer Norman F. Stewart.

A rise in the value of permits issued of \$4,500,000 over that of a year previous was attributed chiefly to the construction of the Fathers of Confederation Memorial Building, value of which is \$5,095,000.

Some other major buildings and the value of their permits are: Holy Redeemer Church (\$500,000); Bank of Montreal (\$204,000); and the Roman Catholic Episcopal Corporation Bishop's residence (\$100,000).

Nearly all types of building renovation and construction were up over 1962. There were 28 single residential permits issued while in 1962 there were only 24. Nine duplex, compared with four in 1962, four apartments compared with one, and seven new commercial compared with two a year ago.

New commercial construction remained the same as a year previous at seven while residential and commercial alterations were down; residential was 47 this year, down one from last. Commercial alteration was down two from 1962 at 17 in '63.

Mr. Stewart says that if the present government plans for the

## North River Drive-In thrives during summer

The F.G. Spencer company of the most modern and up to date in eastern Canada. The drive-in and the Capitol Theatre in Charlottetown are under the management of Edward Mullis, who came to Charlottetown in 1960.

Some outstanding shows are expected in the Spencer Theatre in 1964, including hopes for such as "Cleopatra." How the West was Won" and several which are currently playing in major cities.

## Decorators plan expansion in '64

Three and one half years ago a group of enterprising Charlottetown business men started a business known as Custom Interiors Ltd., that has since grown into one of the best known interior design decorative firms in the Maritimes.

The three men, Keith Pickard, Jack Miller and Bill Oulton, have become design decorators for several well known architects who do not keep interior design staff of their own, and also have branched into the field of interior decoration itself, due



T. ST. MARY'S MOTHER HOUSE TO BE COMPLETED THIS YEAR CONSTRUCTION HITS \$641,000

## Village of Sherwood grows

Sherwood saw a total of \$641,000 worth of construction started in the village during 1963.

Some 28 single dwellings, a shopping centre, Maritime Electric's switching station, an apartment house and several garages were built or at least started during the year.

The population has grown from 1,600 in 1962 to 1,830.

One third of the village was switched from septic tanks to sewer lines during the year.

John MacAfee, former commissioner of the village, noted that the village was "held up" in the installation of the sewer lines by the harbour pollution survey. He reported that as soon as the commission knows what it is going to do about the survey the rest of the lines can be installed.

**STREET LIGHTS**  
Mount St. Mary's new mother house was started in 1962 and construction has been carried on through the past year although it hasn't as yet been completed.

Street lights were installed last April in Sherwood for the first time.

The Livingston MacArthur Nursing Home, situated in Sherwood, expanded to 40 beds during the year.

The open air rink in the village, which has been in existence for three years, was opened this year on Dec. 15.

Children in the village were able to enjoy skating during their Christmas vacation for the first time.

# REPUTATIONS ARE MADE NOT BORN

We are in our fifth year of serving the people of PRINCE EDWARD ISLAND with the finest in VOLKSWAGEN REPAIRS.

We thank all our customers who we have done business with and in the future we hope to be able to give you even better service.

## 4 1/2 Years of Service on Prince Edward Island TO YOU THE VOLKSWAGEN OWNER

SATISFACTION GUARANTEED

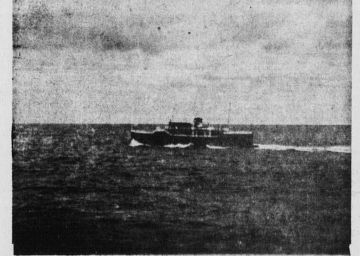
# RUDISCH'S

Southport Dial 4-5725

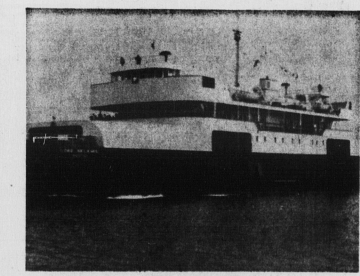
## Northumberland Ferries Ltd.

# "IN TOUCH WITH THE TIMES" THEN .....

<b>1941</b>	
Passengers . . .	25,303
Autos . . . . .	6,527
Trucks . . . . .	629



Prince Nova, First Ferry to Wood Islands



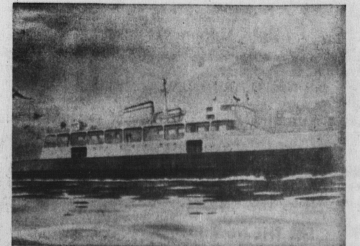
LORD SELKIRK

<b>1963</b>	
Passengers . . .	179,216
Auto . . . . .	55,970
Trucks . . . . .	10,446

## AND NOW .....

## 1964

Prince Nova, newest addition to the Northumberland Ferries fleet. Powered by two 1,600 horsepower diesels the "Prince" will make one extra crossing per day due to her speed. With a gross tonnage of 1,750 and a length of 260 feet.



THE NEW PRINCE NOVA

# NORTHUMBERLAND FERRIES LTD.

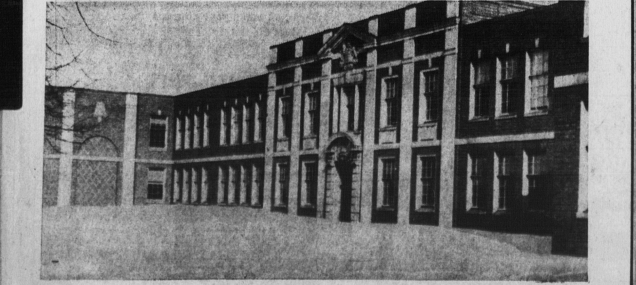
QUEEN STREET CHARLOTTETOWN

# PRINCE OF WALES COLLEGE

## Marking 130 Years of Progress in the Field of Education . . . 1834 to 1964.

Prince of Wales, established as the Central Academy in 1834, and renamed in 1866, has had a long and interesting history of service to Prince Edward Island and countless Islanders. The college, like all educational institutions, faces a great challenge to maintain the finest scholastic traditions and yet to proceed into the future with imaginative and vigorous ideas.

DR. FRANK McGRONN PRINCIPLE



An education is a most precious, most valuable asset. Do not treat it lightly -- but rather, make the most of it.

Without Education There Is No Progress!

Charlottetown Prince Edward Island