

# Members of Provincial Gov't



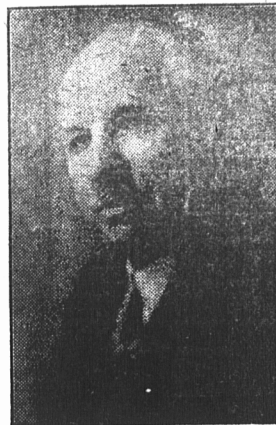
**HON. J. P. McINTYRE**

Minister of Public Works and Highway, Province of Prince Edward Island. Born at St. Andrews, P.E.I.; educated at St. Andrew's. Farmer and lobster packer; Director of Savage Harbor Packing Co. First elected to Legislature in 1919; appointed Minister of Public Works in the Saunders Administration, 1927. Remained with Hon. W. Lea's Cabinet; re-elected 1935. Party politics, Liberal; religion, Catholic.



**HON. T. A. CAMPBELL, K. C.**

Premier of the Province of Prince Edward Island. Born at Summerside; educated Summerside Public School, Prince of Wales College, Dalhousie University and Oxford University. Degrees—B. A. and M.A., Dalhousie and Oxford. Barrister and Solicitor. Attorney-General of Prince Edward Island, 1930-31; first elected to Legislature, 1931; re-elected 1935; appointed Attorney and Advocate General in Mr. Lea's Cabinet, 1935. Was sworn in as Premier Jan. 14, 1936. Party politics, Liberal; religion United Church of Canada.



**HON. B. W. LePAGE**

Born at Rustico, P. E. I. Educated at County School. President LePage Shoe Co., Ltd. Elected to P. E. I. Legislature in 1919. Was Acting Premier of P. E. I. Sworn member of the Saunders Ministry, 1927; Member Without Portfolio in the Lea Government; re-elected, 1931. Resigned with Hon. Mr. Lea's administration Aug. 29, 1931. Re-elected 1935 and appointed Minister Without Portfolio in Mr. Lea's Cabinet; appointed President of Council in Hon. T. A. Campbell's Cabinet. Party politics, Liberal; religion United Church of Canada.



**HON. W. H. DENNIS**

Was born at Port Hill, Prince Edward Island in 1866. At an early age he removed with his parents to O'Leary and received his education in the little red school on the hill. He has been a prominent figure in the business life of his home town for the past forty-five (45) years. In the year 1915 he entered the political field on behalf of the Liberal Party and has since continuously represented the second district of Prince County in the Provincial Legislature. On the death of the late Hon. W. M. Lea he was selected by the Government to fill the position of Minister of Agriculture, which position he has occupied with outstanding success until the present time. His unflinching courtesy and sincerity of purpose has made him one of the most popular Ministers to fill this portfolio in the history of this Province. Mr. Dennis married Miss Annie Ellis of Tyne Valley, and has four sons and two daughters.



**HON. T. WILLIAM L. PROWSE**

Banker, merchant, Member of the Provincial Legislature. Born August 31, 1888; educated at West Kent School, Sydney Academy and Prince of Wales College. Entered service Royal Bank of Canada in 1908; manager Branch at Hunter River 1914-15, and resigned to take position with Prowse Bros., Ltd., Charlottetown. President, Prowse Bros., Ltd.; Vice-president, Charlottetown Exhibition Association; Director, Charlottetown Forum; City Councillor for eight years; Mayor, 1930-31; Legislator, 5th District of Queens, 1935; Member of Executive Council and appointed Minister Without Portfolio in Government of late Hon. W. M. Lea, continuing in that of Hon. T. A. Campbell, 15th August, 1935. Freemason; K. of P.; Liberal, Presbyterian, Member Rotary Club.



**HON. MARK R. MacGUIGAN, K.C.**

Minister of Education and Public Health, Province of Prince Edward Island; born at Hope River, P. E. I. Educated at St. Dunstan's University, graduating Bachelor of Arts; barrister-at-law. Elected to the P. E. I. Legislature 1935. Political party, Liberal; religion, Catholic.

