

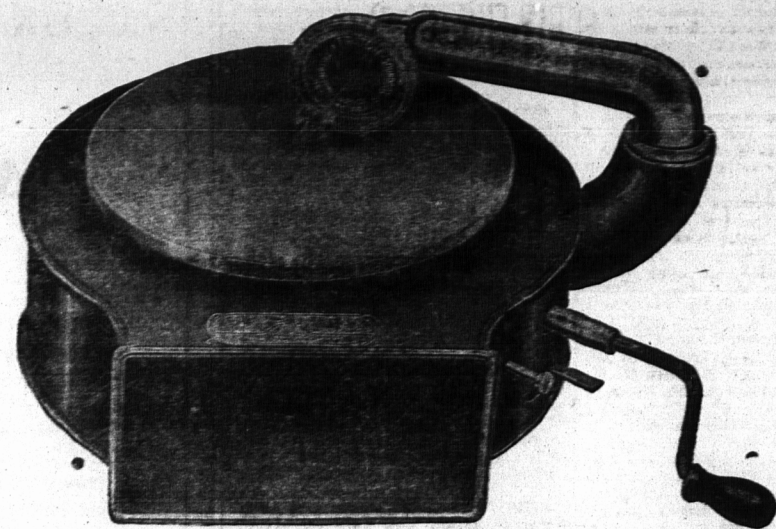
# The Island's Biggest Store is at Your Service With Best Goods--Lowest Prices

Never did this big store mean more to Prince Edward Islanders than it means under the present state of the market. The price upheavals, due to abnormal conditions, make the matter of merchandising extremely precarious.

The smaller dealer is faced with conditions such as he has never before had to contend with—his only salvation from litigation is big profits, since he has not the immense amounts of money necessary to buy in unusual quantities.

Before prices advanced to their present stage Holman's bought up hundreds of thousands of dollars worth of goods, and much of these goods are selling at Holman's right now, less than the ordinary merchant could buy them direct from the factory, even were he in a position to do so.

Prompt purchasing is not a matter of economy alone, it is a duty to State and self.



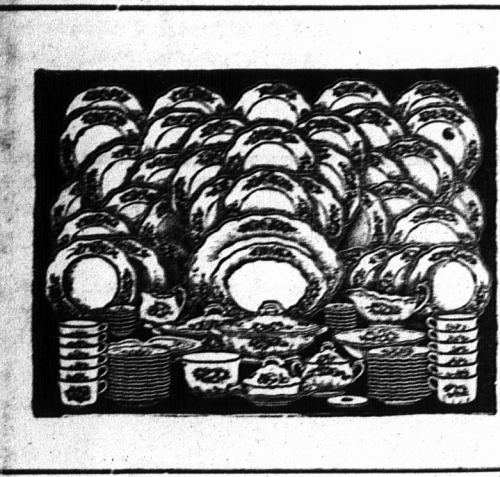
### Guaranteed Phonograph

## \$7.98

Here is a sensational—away below cost price on six Guaranteed Triton Phonographs.

This is your opportunity to provide enjoyable home entertainment for your family and friends. The Triton will play all kinds and sizes of disc records—waltzes, instrumental, vocal, (both sacred and secular) are all the same to the Triton.

Made entirely of metal in a beautiful lustrous enamel finish; handsomely nickel trimmed and finished in every way rivalling many more expensive machines. Supplied with 100 perfected needles FREE. Complete while the lot lasts. Price \$7.98.



### Dinner Sets \$5.35 and up to \$50.00

You will surely find what you want in our display of Dinner Sets at any price from \$5.35 to \$50.00.

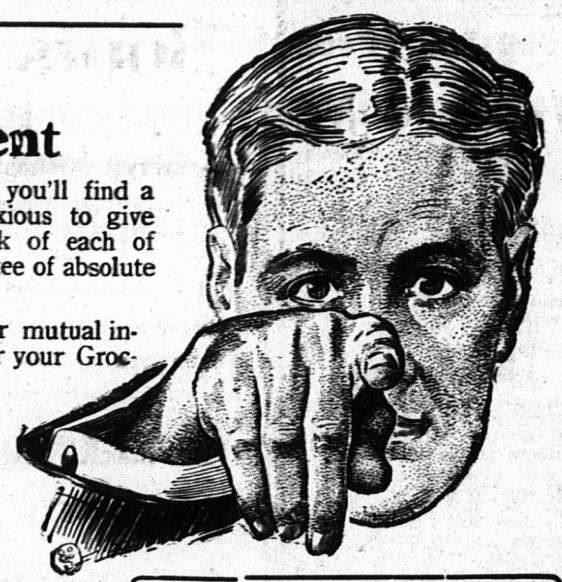
We have the reputation of having the most complete stock of Dinner Sets in Prince Edward Island. All we have to say is see for yourself. We have every reason to believe that you will be satisfied with your visit.

### A word from our Grocery Department

In our Grocery Department alone you'll find a staff of fifteen salespeople ready and anxious to give you prompt, careful service—and back of each of these people, stands the Holman Guarantee of absolute satisfaction.

Don't you think it would be to our mutual interests to send Holman's your order for your Grocery requirements.

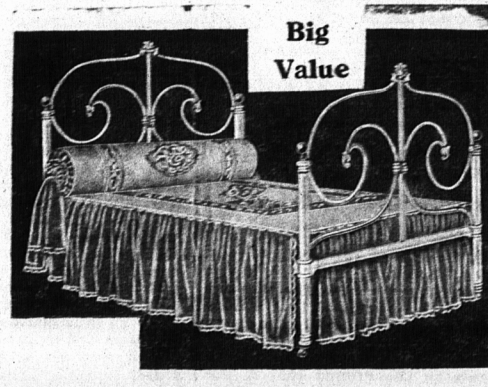
We'll do our part.



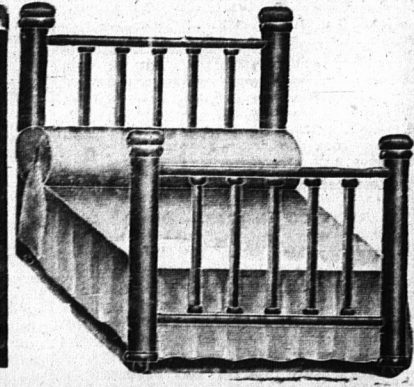
### Ordinary Values Better Than Ordinary in the Crockery Dept.

- Six Glass Nappies with large bowl 25c
- Six-piece Water Set including six table glasses and Water Jug for 49c
- Six Table Glasses for 16c
- Lamp Chimneys 4, 5 and 8c (according to size.)
- Six-piece Glass Table Set including covered Butter Dish and covered Sugar Bowl, also spoon holder and Cream Jug for 28c
- Aluminum Salt and Pepper Shakers, per pair 10c
- Japanese Painted Cups and Saucers 12c
- Lanterns complete with burner, wick and chimney for 65c
- Bedroom Hand Lamps with burner, wick and chimney 23c

## 3 Big Bargains in Beds



Here is a very graceful design new style White Enamel Iron Bed; it is made with substantial posts, braced, well finished and exceedingly popular. This bed is a magnificent value, considering the present cost of material. It is one of our biggest sellers at our special price **\$3.85**



An all brass Bed made of rich massive construction; 2 in. posts with 2-8 in. filling rods, height of head 57 inches, height of foot 39 inches. This Bed is a real bargain at our present price—a value that should be promptly taken advantage of by anyone who wishes to make their money go furthest. SPECIAL PRICE **\$10.50**



This is the lowest price offered in Canada on this style massive continuous post White Enamel Iron Bed; is a plain rich design, substantially built and braced throughout, numerous filling rods and attractive cast iron chills. You will make no mistake in ordering this bed at our special price. **\$4.98**

### Get Acquainted With Holman's Harness Department

It is only about one year since we opened this Department, but already three men are kept busy as beavers supplying the demands of our customers.

We would like you to see the class of goods we manufacture in this department. The goods will speak for themselves.

If there is something ordinary, or out-of-the-ordinary in harness that you wish to have made, just write us. If we can't make it for you, we do not think anyone can.

IT'S NOT A MATTER OF SHOULD I SHOP AT HOLMAN'S--IT'S CAN I AFFORD NOT TO.

## Two Unusual Furniture Values

### Worthy Values in HARD WARE

- Tea-Pot Strainers, each 3c
- Cup Strainers, each 3c
- Six Cover Knobs 5c
- Aluminum Clothes Sprayer 10c
- Clothes Pins, regular style, per dozen 2c
- Clothes Pins, Spring style, per dozen 5c
- Cake Cutter, all styles, Each 5c
- 10 qt. Tin Pail 15c
- Enamel Sauce Pans, each 12c and up
- Enamel Preserving Kettles, each 19c and up
- Enamel Double Boiler, each 45c and up
- Enamel Tea Pots, 25c and upwards.
- Tea or Coffee Canisters, each 12c
- Spring Mouse Straps, each 2c
- Spring Rat Traps, each 8c
- Tooth Scraper with brushes 18c



### Quarter Cut Polished Oak

## \$17.50

A big saving on genuine quarter cut China Cabinet. This Cabinet is built on substantial plain lines with beautifully polished finish, bent glass sides, fitted with three adjustable shelves and attractive oval British Bevel Plate Mirror. To see this Cabinet is to admire its excellence in value. Only a few left at this special price **\$17.50**

### A Safety and Sanitary Crib

A bargain in a popular style Child's Sanitary Safety Crib; made of good heavy construction, white enamel all-over, finished with numerous filling rods and chills, braced at every point, fitted with sliding sides; national fabric weave spring. This is an extremely up-to-date style crib and is a phenomenal value at this special price **\$5.45**



DON'T FORGET THAT HOLMAN'S CATALOG BRINGS THE STORE TO YOUR DOOR

### Improvements in Our House Furnishing Department

We are making some marked changes in our house Furnishings Department, which will enlarge and improve the Department, when these changes will have been completed it will surely be a very up-to-date section—bright, cheerful, attractive—a place where you can do your selecting quickly and satisfactorily.

# R. T. HOLMAN LTD. SUMMERSIDE, P. E. ISLAND

The Island's Biggest, Best and Busiest Store