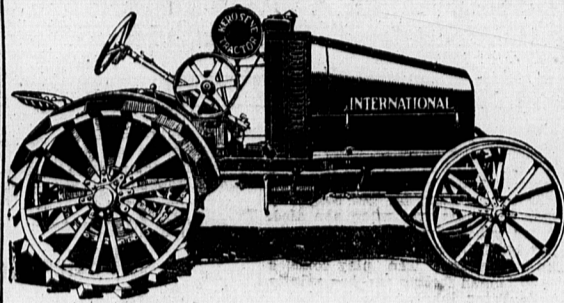


WAGSTAFFE'S
Real Seville
Orange Marmalade
All Orange and Sugar—
No camouflagé.
Bottled with care in Silver Pans.
ASK YOUR GROCER FOR IT.



**International
8-16 H. P.
Kerosene Tractor**



THIS TRACTOR HAS PROVEN ITSELF THE BEST FOR OUR NEEDS. The day of experiments is over. This tractor has demonstrated beyond the shadow of a doubt to be capable of doing all kinds of work on the farm at a minimum of cost and to the owners entire satisfaction.

About one half of all the Tractors in use in this province are International 8-16. "Why?" There surely must be a reason; ask the owners, they will tell you that this tractor will do all their work and at a great saving of time and labor getting the crops in in proper time and at the least expense; this is certainly satisfaction.

More work can be accomplished by one man with a tractor in one day than can be performed by three men with nine horses in the same time, and when it comes to belt work the tractor provides all the power that is necessary for threshing, sawing wood, pumping and grinding, etc., etc.

A dependable tractor that is built to do belt work as well as drawbar work can be used to advantage every day.

Place your order with us today and be ready for the spring work; it will be money wisely invested. THE TIME IS SHORT NOW, and we have the tractors in stock in our warehouse.

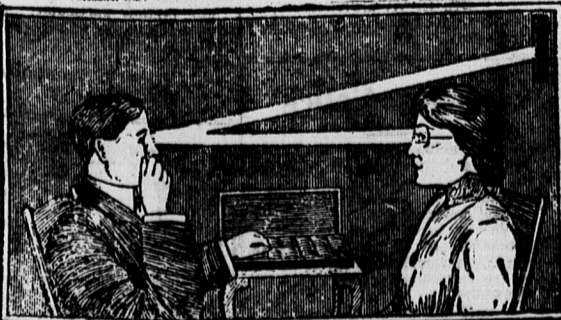
International Harvester Co. of Canada, Ltd.,

Samuel Kennedy, Jr.,

General Agent,
Charlottetown, P. E. I.

8490-4-27111821.

**Luminoscopy
Shadow Test
System**



LOOKING INTO THE EYE

The most advanced science of Eyesight Testing known. This system measures and corrects any hidden or latent trouble. It is especially valuable in old chronic hard cases—those who have not received satisfactory results elsewhere. We also use in our Test room the Ophthalmometer, Retinoscope, Phorometer and other delicately adjusted apparatus for determining just in what degree if any, your eyes fall short of perfection. If in need of glasses come in and "SEE."

Superior Eye Service

H. J. MABON

Optomertist and Prescription Druggists
MONTAGUE, P. E. I.
Next door Bank of Commerce

**FROM THE ANNUAL REPORT OF THE
MARITIME DIVISION NATIONAL
COUNCIL Y. M. C. A., 1919**

The following is a brief summary of statistics culled from a very full and comprehensive report of activities promoted by our supervisory Department during the year.

POLICY—The emphasis has been placed this year in relation to work for teen-age boys, in local Association and through Churches, by a co-operative method, service to returned and returning soldiers; securing Secretaries for local Associations; promoting conferences for the finding, and training of volunteer leadership.

BOYS WORK—Attendance at Summer Camps 271
Attendance at "Tuxis Boys' Camp" 122
Communities adopting C. S. E. T. Programme 51
Attendance at Provincial Conferences 969
Boys who attend Conferences represented 145 different communities.

STUDENT WORK—A Student Secretary devotes full time to organizing and supervising religious activities among the different universities, colleges, and secondary schools in the Maritime Provinces.

MILITARY WORK—The sum of \$151,295 was expended in this territory in providing building, equipment and programme for the thousands of men we were privileged to serve.
Buildings and Equipment, \$60,500
Programme, \$90,794.

EQUIPMENT USED

15 Pianos.
30 Gramophones.
20 Billiard Tables.
9 Moving Picture Machines.
650 Gramophone Records.

SUPPLIES PROVIDED

91,185 Magazines.
19,000 Sex and Health Education Booklets.
411,085 Sheets of Writing Paper.
230,940 Envelopes.

ACTIVITIES—	NO.	ATTEND
Concerts	252	30,958
Moving Picture Shows	119	90,828
Theatre Parties conducted by Y. M. C. A.		
Secretaries from Hospital	365	12,619
Social Evenings	41	30,310
Illustrated Lectures	44	5,546
Auto Rides (Hospital Patients)	61	
Personal Interviews	1,700	
Religious Services	496	26,316
Outdoor Athletic Sport (At Wanderers' Grounds Halifax)	103	2,878
Beds occupied	40,000	
Meals provided	150,000	

Fifteen thousand eight hundred and forty men received refreshments; coffee, doughnuts, or biscuits, and a six months complimentary ticket in any Association at the Dispensary Centre, Halifax. In co-operation with the G. W. V. A Ladies Auxiliary 6265 Maritime men returning home received distribution of fruit, gum chocolate, and cigarettes at South Station, Halifax in lieu of the troop train service provided for the Western men.

TRANSPORT AND TRAIN SERVICE

Troops met and served at Pier 2 190,000
Trains required to convey these troops 380

A Y. M. C. A. representative accompanied each train to its destination. This was a big piece of service, appreciated by the Military authorities and the Rank and File alike.

STRENGTHENING THE HOME BASE

During the closing months of 1919 five important centres were supplied with General Secretaries; 2 with Physical Directors; 1 with Boys' Work Secretary; 2 Supervisors

men also placed. Present Staff 38—Local 24—Military 8—Supervisors 5—County 1.

Four of our Provincial centres have on hand new building projects of large dimensions, namely, New Glasgow, Moncton, Glace Bay, and Sydney. These will require constant help from the Supervisory agency in the coming year. Several other centres are ready for organization. Our field is great and growing greater. The need and the recognition of the need, for the extension of the Y. M. C. A. Four-Fold Programme in the interests of our Maritime Young Men and Boys, is also growing. One-fifth of the financial objective is to be used for this extension work.

You will see from the foregoing, that by your subscriptions you are helping make possible a programme of practically unlimited possibilities, all related to the one thing that matters much, viz: the making and the moulding of Christian Character and Christian Citizenship on the part of our Boys and Young Men.

"Give me men to match my mountains
Give me men to match my plains.
Men with empire in their visions
And now eras in their brains."

RE-OPENING HOSPITAL.

SYDNEY, N. S., April 28.—The Ross Memorial Hospital, the gift of Commander J. K. L. Ross, Montreal, is being re-opened here today under the superintendency of the sisters of Saint Martha as a Maternity Hospital.

BETTER THAN BLANKETS

A wool-filled comfort is as cheap as a blanket and more satisfactory. They are made from wool-batting, covered with a casing of the heaviest outing flannel, which is to be tacked on loosely with ball darning-cotton. This prevents the wool working through to the irritation of the sleeper. The edges of this case should be turned in and sewed together. Then make a silklike cover and tack to the batting and flannel in any way desired. The silklike cover can be removed, when soiled and washed separately. Comforts made in this way are warm, light, and durable.

SENSIBLE SHOES

Seven persons out of ten suffer excruciating pain, at one time or another, with their feet. A single corn, no larger than a grain of sand can take all the "snap" and vitality right out of you.

Two-thirds of modern foot troubles are due to the fact that almost everyone—man, woman and child—wears his shoe too loose. The shoe itself may be correct as to size and shape, but it is not fastened tight at the only point of control, namely, the instep.

When you set your foot upon the floor or pavement in the act of walking, the shoe adheres, and, if it be loosely fastened over the instep, the foot pushes down into the toe of the shoe. At certain spots on the foot this slipping causes friction. These spots are the soles of the feet; the tops, ends and inner sides of the toes; the great and little toe joints, and occasionally even the back of the heel.

When the friction thus caused is continued hour after hour and day after day, one or more of these spots are almost sure to become inflamed, and sore. A slight thickening, called a "callous" is formed. As the friction and pressure go on, the resulting callous may thicken unevenly; then it is called a "corn."

When Ewes Disown Their Lambs

As a ewe recognizes her lambs only by smell and voice, it sometimes happens that when a ewe has twins or triplets the first born may wander away from its mother and when it is returned to her she will disown it. To prevent such an occurrence the lambs and ewe should be placed in a separate pen for two or three days until they are thoroughly familiar with each other.

Ewes in poor condition will sometimes disown their lambs. They know that they do not have enough to support a lamb and consequently will make no attempt to suckle one. To such ewes I give a handful of salt, which causes them to drink considerable quantities of water. I find that this will start a milk flow in a very short time.

Where a ewe has lost her lamb, by death, a satisfactory way to get her to adopt another is to remove the skin of the dead lamb as soon after death as possible and place the pelt over the lamb you wish the ewe to adopt. This pelt should never be left on a lamb over 24 hours. Sometimes I have found that by putting a halter on the ewe and tying her a day or two she will become so accustomed to a lamb that she will adopt it with no further trouble.—W. A. R.



New Man

If you are suffering from dyspepsia or other stomach trouble, you will appreciate a medicine that will relieve and correct your condition.

HAWKES' DYSPEPSIA REMEDY

regulates and invigorates the digestive organs, prevents acid fermentation and souring in the stomach, and promotes digestion and assimilation of the food.

Try this extraordinary medicine—it will make you feel like a new man.

Sold at all drug and general stores, 50¢
The Canadian Drug Co., Limited
St. John, N. B.

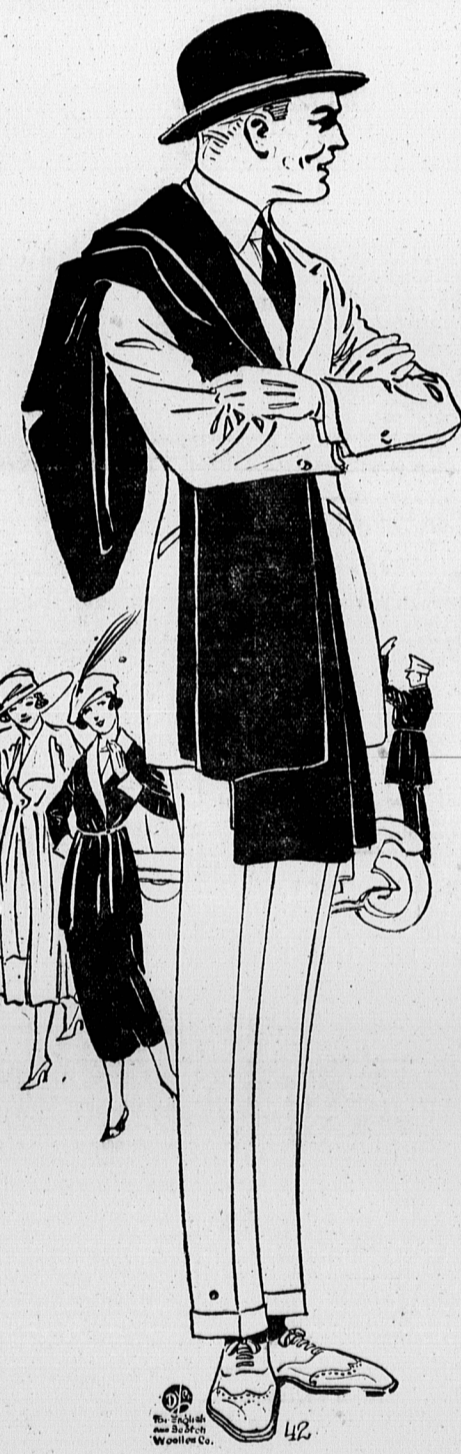
Now Open: Store 26, At Stratford, Ont.
The Biggest Value in Popular Priced Tailored-to-Measure Suits and Overcoats in the British Empire.

Every Dollar Will Do Its Full Duty—If You Order Your New Clothes Tailored-To-Your Measure

If you want to keep within certain price-bounds and at the same time get big value and high-quality, for your every dollar, order your new clothes from us, Tailored-to-Your-Measure.

High-Quality at moderate standardized prices is the rule at all of our 26 Quality Tailor Shops, the fabrics we show are the finest productions of the world's best looms—if real value counts for anything at all—we will measure more men this week for spring clothes than any week during the twelve years of tailoring for the men of Canada.

Value—that's the word—English & Scotch Woollen Co. Tailored-to-Measure Clothes meet the needs of the hour as none others.



Suits and Overcoats Tailored-To-Your-Measure

\$20
English and Scotch Woollen Co.
of Montreal
More Quality Less Money

No connection with any other concern in Canada.

THE great discrepancy between our Standardized Prices for Tailored-to-Measure Garments and what others charge, is the explanation of our business having shattered all former records. You won't know to what level clothes have advanced this Spring until you look into the matter—then you will find that the savings we offer you are the kind that simply compel attention. You will find our Standardized Prices to be about half what others are asking—and bear in mind that ours are Tailored-to-Measure Clothes, garments that are in every way worthy of your confidence. Let us take your measure today.

J. J. J. J.
General Manager for Canada

Trousers
We are showing exceptional values in odd trousers from special trouser lengths. Many of these clothes are shown in very limited quantities, and are exceptional values.

English & Scotch Woollen Co.

Head Office and Sales Room 851 St. Catherine Street East, Montreal

158 RICHMOND ST CH'TOWN, P.E.I.

26 QUALITY TAILOR SHOPS IN CANADA

Toronto Ottawa Sault Ste. Marie Winnipeg Hamilton Quebec Stratford Three Rivers Sherbrooke St. Hyacinthe St. John Sydney Amherst Halifax Moncton Fredericton Charlottetown

Out-of-Town Men

Write for Free Samples, Fashion Plates, Self-Measure Form and Tape Line. Address 851 St. Catherine St. East, Montreal.