

While We Live
WE GROW

THE MORNING GUARDIAN.

ALL the News
ALL the Time

ESTABLISHED 1891.

CHARLOTTETOWN, PRINCE EDWARD ISLAND, TUESDAY, MAY 28, 1901

PRICE TWO CENTS

BUFFALO'S BIG FAIR

Some Idea of the City
and its Parks

THE GRAIN ELEVATORS

By The Guardian's Corres-
pondent.—The Show not
Properly Under Way.

In my last letter to the GUARDIAN I promised that I would say something about the city of Buffalo. It has been termed by the visitor a city beautiful for situation. By the contributing hand of art, Buffalo chiefly lies on a slope which gently rises from lake and river, save that there is a steep bluff for a short distance along the Niagara. On Thursday in company with a friend it was the writer's privilege to ascend to the spacious roof of Elliott Square an excellent point of advantage to one seeking an understanding of the city's geography. We were told that to the South and southwest are Buffalo River and Lake Erie, to the west is Niagara's broad stream, backed by the land of our birth—Canada. Within the measure of the corporation lines, but beyond the densely built business centre, to the northwest and north and east of north as well, sweeps what from the altitude and distance seems a forest of richest verdure, pierced by many spires and stamped with the lace like tracery of white roadways, Buffalo's asphalt pavement's of which my friend takes trouble to explain, there are over two hundred miles, the delight alike of those who ride in carriages or on bicycles, the pride of all whose homes face streets with the slightly surface so readily preserved to cleanliness. Turning to the east and southwest, the view is clouded by the fall of black smoke from railroad, shops, grain elevators and factories. Possibly the view as the observer looks south,

ATARRH EASILY AND QUICKLY CURED.

Poor remedies have given Catarrh the reputation of being incurable. But it is curable easily and quickly if the right method is employed. Snuffing an irritating powder or ointment up the nose, won't cure Catarrh, neither will tablets, douching or stomach medicines cure. These treatments fail because they are not far reaching enough. They only affect local conditions but do not remove the cause, which is germs life established deep down in the lungs bronchial tubes and nasal passages. Ordinary remedies do not reach these remote parts but Catarrhzone does for it is breathed through the inhaler into every air cell in the lungs into every air passage in the head and throat. No matter where the Catarrh is Catarrhzone will reach it. It kills the germs heals sore spots clears the nose and throat instantly. Universally used, pleasant and clean guaranteed to cure or money refunded. Try Catarrhzone 25 cents and \$1.00 Druggists or Polson & Co Kingston, Ont.

Are Your Shoes Comfortable

An uncomfortable shoe is most unhealthy because the wearer is afraid to take exercise.

If you want to find pleasure in walking you must get a shoe that fits properly.

The Invictus Shoe is made on new and improved lasts by the latest machinery and most skilled workmen. They are made equally strong in every part. Only the best material is used.

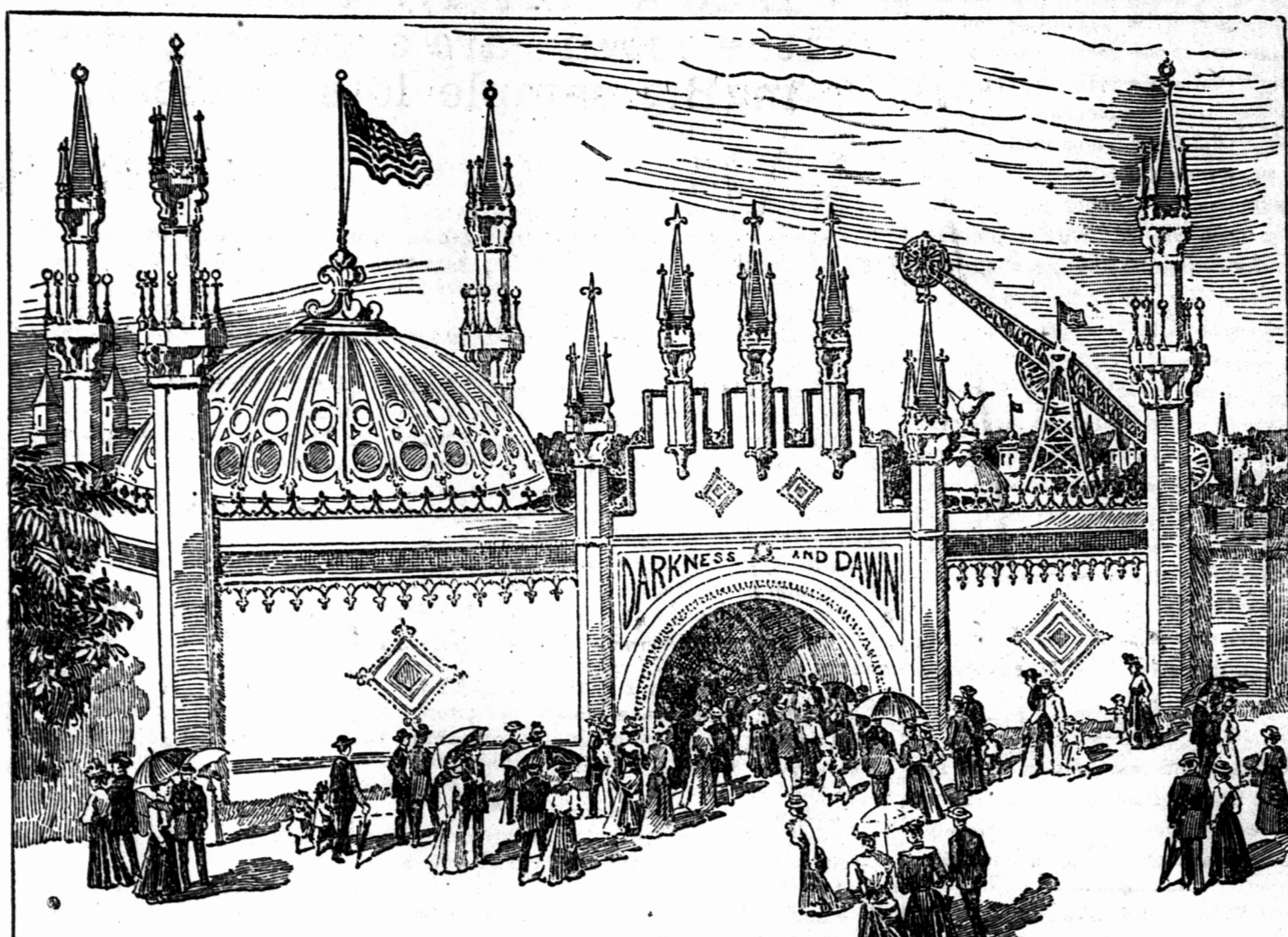
Comfort is assured because of the different lasts and widths.

Five different toes from the broad McGill to the English the most stylish shoes in the city.

Price \$3.50, 4.00, 5.00 stamped on the sole with Geo. A. Slater's name and trade mark.

GOFF BROS.

Sole Agents.



ONE OF THE ENTRANCE GATES, BUFFALO EXPOSITION.

surpasses anything yet seen by the writer. The busy harbour is crowded with ships which carry hundreds of thousands of tons of coal and other stores to western parts and bring thither millions upon millions of bushels of grain for transportation by canal or railroads to the sea.

Main Street, stretching north from Buffalo River some three miles to the district known as Cold Spring, where it swings several points to the eastward, is the dividing line of the city. On the west side is the residential part of the city, while on the east side are the houses of the working people, the factories and railroad yards. In this connection it may be mentioned that Buffalo is noted for the number of working men who own the houses in which they live.

In the wisdom of the civic government the convenience of all the citizens has been taken into consideration. Some idea may be gathered when it is learned that the entire park system comprises nearly a thousand acres, and has cost more than two million dollars, with the connecting parks it nearly encircles the city. It would be useless to attempt a description of all the parks and in consequence a brief description of the largest, known as Delaware Park in the northern part of the city will be given. Delaware Park includes woodland and meadow, a lake with beautifully shaded banks and shrubbery-laden islets, picnic grounds, bridle and bicycle paths; and the pastoral scenery which the landscape architect has here succeeded in producing is remarkable for the effectiveness of its completely peaceful loveliness.

It is claimed, and at the present time I have no means at my disposal to contradict, that the first grain elevator in the world was built in Buffalo, by Joseph Dart, in 1842, when, a season's receipts having exceeded 2,000,000 bushels, how to handle the grain more expeditiously had become an important question. It solved the question and the monsters that are located in the city are constructed on quite the same principles. Buffalo has some forty storage elevators, with capacity to hold nearly 20,000,000 bushels. These and the great coal trestles, lumber and ore docks, railroad storehouses, and tracks, crowd the harbor banks and the strips of land lying between Buffalo River and the lake.

Fearing that your readers may be weary and wish to hear about the Exposition I will say something about it. My next letter will be entirely about the Exposition. The grounds of the Exposition are considered the most accessible of any site that could have been chosen. The electric

street railway connections are such that nearly all lines will be able to send their cars from remote points in the city direct to the Exposition, affording quick transit to and from the grounds. The ride by electric cars is not more than 20 minutes from the business center of the city. A line of double track steam railway, known as the New York Central Belt Line, encircles the city and touches the northern boundary of the Exposition grounds. To this belt line, and to the Exposition station, and the storage warehouses, near by, all the steam railways entering Buffalo have access.

The electric lines of the city will also receive and discharge passengers at this point. Every provision which an experienced foresight can suggest is planned for the quick handling of large crowds and to prevent a congestion of traffic.

The electric and steam lines to Niagara Falls are also near by and arrangements will be made so that visitors can take the cars at the grounds for quick trips to the city of wonderful cataracts.

The grounds chosen by the Board of Directors for the Exposition lie in the northern part of Buffalo, well within the city limits. The dimensions from north to south are about one mile, and from east to west about a half a mile, the plot containing 350 acres. Delaware Avenue, one of the finest residence streets in the world, skirts the eastern side and Elmwood Avenue, one of the main thoroughfares of the great residential section of the city, marks the western boundary. Within the park lands is an irregular and beautiful lake, half a mile in length, which will become one of the principal water features of the exposition. This lake is described by Daniel H. Burnham, Director of Works of the Chicago Exposition, as the most beautiful interior lake in the country. Its banks are generally steep and for the most part thickly wooded with flowering shrubs and trees of rare species. Numerous drives and shady walks skirt the lake.

The general style of architecture of the Exposition is a free treatment of the Spanish Renaissance. This style has been chosen by way of compliment to the many Latin-American countries whose interest was sought and received in the enterprise. The architects have found their inspiration chiefly in the prominent buildings of Latin-American cities. Colonnades and arcades, suggesting coolness and comfort; elevated pavil-

ions, balconies, loggias, domes, lanterns, towers and minarets, commanding broad views of the grounds; fancy flag standards and finials of varied design, are extensively used in the ornamentation of the main structure. The finer details have been worked out by the liberal use of statuary, medallions, arabesques and other work in relief, under the master guidance of Karl Bitter, director of sculpture, who supervised much of the work at the World's Fair. About 125 grand original sculptured groups have been made—a far greater display than seen at any former American exposition—the work engaging the attention of all the leading American sculptors. It was early decided to make a generous use of brilliant colors and tints in beautifying the many buildings and this idea has been carried out. This work has been entrusted to one of the most famous experts in mural decoration in the United States, Mr. C. Y. Turner of New York. It will be noted, therefore that no effort has been spared to give to the exterior of this Exposition such architectural and floral beauty as shall entitle it to a high place among the world's greatest enterprises of this character.

It is not the writer's purpose to say much at this stage about the Fair except to say that the attendance on the opening day evidenced that the interest in the exposition is universal, a large number of Canadians being present including some from P. E. Island.

The buildings are not ready and it will be some weeks before every thing is carried out in detail. Before leaving the city for Chicago I will send you a full account of the Fair.

QUILL

To-day's Probabilities.

Toronto, May 27.—(Special.)—Easterly winds and rain.

CHICAGO MARKETS.

Chicago May 27.—(Special.)—The following are the closing rates:

May, Wheat, 73½; Corn, 42½; Oats, —
Pork, \$14.57½.
July, Wheat, 73½; Corn, 43; Oats, —
Pork, \$14.57½.

NEW YORK MARKETS.

Closing prices May 25
Amalgamated Copper 116½
American Sugar 147½
American Tobacco 136½
Atchafson Common 77½
Brooklyn Transit 75½
Burlington 190½
Louisville Nashville 102
Manhattan 113½
New York Central 147
North Pacific Common 180
Rock Island 152½
St. Paul 156½
United States Steel Com. 43½
" " " " 93½

Canadian Stock Quotations.

(Furnished by McCuaig, Rykert & Co. Montreal.)
Closing prices May 27.
Canada Pacific 103
Montreal St. Ry. 286
Toronto St. Ry. 111
St. John St. Ry. 117
Halifax St. Ry. 92
Twin City St. Ry. 80½
Montreal Gas 80½
Royal Electric 80½
Dominion Coal Co. 35
Republic Mining 18
Payne de 30
North Star do 60
Dom'ton Iron and Steel 34½
" " " " 85
War Eagle 22
Heat & Power 91½

HALIFAX SUICIDE

Telegram Throws Light on
the Subject.

WAS FROM A RELATIVE

Shaughnessy's Big Scheme—
Striking Cigar-Makers to
Start a Factory.

A ROUND-THE-WORLD ROUTE.

MONTREAL, May 27.—[Special.]—Mr. Shaughnessy, President of the Canadian Pacific, suggests that an all-round the world route is one of the possibilities of the future as a result of the construction of the trans-Siberian Railway.

STRIKING CIGAR MAKERS' FACTORY.

J. A. Darnell of the International Cigar Makers' Union is here arranging to start a factory in which the striking cigar-makers will be employed.

THE SUICIDE'S TELEGRAM.

HALIFAX, May 27.—(Special.)—Mr. Dawson, Western Union Superintendent at St. John, when here at first refused to give the Court the telegram addressed to the name of Mrs. Cross who afterward suicided at the Halifax Hotel here.

The telegram arrived 24 hours after she had left St. John for Halifax. Under threat of commitment for contempt of Court and on promise of protection, Mr. Dawson produced the telegram.

CONTENTS NOT MADE PUBLIC.

Though not given to the press the Chronicle however learns that the telegram bears the signature of a relative of the deceased, and it also throws much more light on the great mystery.

From the information contained in the telegram there appears but little doubt that if the message had reached the woman in time she would not have ended her life.

THE SENDER CAN BE TRACED.

The address of the sender was not given on the telegram, but the office from which it was transmitted can easily be ascertained, and the address of the sender can also be traced, as a reply was expected to have been forwarded.

WIRELESS TELEGRAPH.

A Liverpool despatch says: The steamer Lake Champlain, the first transatlantic vessel to be equipped with the Marconi system of wireless telegraphy, has sailed from this port for Montreal. She will try to communicate with the shore two days after leaving the Mersey, and two days before she reaches Quebec.

EASING THE CHEST

It is the cold on the chest that scares people and makes them sick and sore. The cough that accompanies the chest cold is racking. When a cold is a hard one and the cough correspondingly severe every coughing spell strains the whole system. We feel sure that if we can stop coughing for a day or so we could get over the cold, but we try everything, we know of or can hear of in the shape of medicine. We take big doses of quinine until the head buzzes and roars; we try to sweat it out; we take big draughts of whiskey, but the thing that has its grip on the chest hangs on, and won't be shaken loose. If the irritation that makes us cough could be stopped, we would get better promptly and it is because Adamson's Botanic Cough Balm is so soothing and healing to the inflamed throat that it is so efficient a remedy for coughs and colds. This really great medicine is a very simple preparation, made of extracts of barks and gums of trees, and it never deceives. It loosens the throat and the desire of cough is gone. When the cough goes the work of cure is almost complete. All druggists sell Adamson's Balm, 25 cents. Try this famous Balm for your sore chest and you will find prompt relief.

SUICIDE OF AN ASSASSIN

ROME, May 23.—Bracci, the assassin of the late King Humbert, has committed suicide at the penitentiary of Santo Stefano.

CRAMPS ARE LIKE BURGLARS,

they come unexpected and when they are least welcome. Be armed with a one minute cure for cramps and keep Polson's Nervine handy; it acts instantaneously. Nervine's anodyne power is unique, for its composition expresses the highest progress of the age. Polson's Nervine is a true comfort in the family for all derangements of the stomach and bowels. It is an absolute specific. Nervine has five times greater medical value than any other remedy and is sold in large 25 cent bottles. Try it.

FOR CREED REVISION

U. S. General Assembly
Resolves to Revise.

WHAT IS NOW PROPOSED

Majority and Minority Report
With an Outline of P. O.
ceedings.

COMMITTEE'S REPORT ADOPTED.

PHILADELPHIA, May 27.—(Special.)—The Presbyterian General Assembly has adopted the Revision Committee's report.

SUMMARY OF THE REPORT.

On Thursday Dr. Charles A. Dickey, chairman of the committee on revision, read the report which has now been adopted which recommended that a revision committee be appointed to prepare amendments in five chapters of the Westminster Confession of Faith.

The committee recommended further that neither the summary nor the revision should in any sense impair what is known as the Calvinistic system of doctrine.

THE MINORITY REPORT.

Dr. William McKibbin of Cincinnati, read the minority report which favored the proposed revision but opposed the new statement which the majority had recommended.

The majority report was signed by thirteen members and the minority by two out of the committee of 15.

OUTLINE OF PROCEEDINGS.

On Friday last a motion to dismiss the subject of creed revision was defeated by a large majority.

On Saturday afternoon a motion to accept the minority report was defeated by a majority of 37—yeas 23; nays 27.

The Assembly then adjourned till Monday when the Revision Committee majority report was adopted, by what majority is not stated.

A BAD HEART.

Newfoundland Man Has to Quit Work—
Palpitation the Cause.

CAPE LA HUNE, Nfld., May 27.—(Special.)—Mr. Thomas Barter of this place has been in a bad way for some years. He had palpitation of the heart, and had to quit work altogether. His friends feared the worst, but Mr. Barter himself never quite gave up. His suffering was great, and he became discouraged, but when a likely remedy was suggested he at once gave it a fair trial. However, nothing did him any good, till he noticed a testimonial for Dodd's Kidney Pills, as a Cure for Heart Trouble. He resolved to try once more. He did so, and is a well man to-day. He says:—
"For over six years I suffered intensely I could do no work. I used five boxes of Dodd's Kidney Pills, and I am cured completely."
"I believe Dodd's Kidney Pills will cure any case of Heart Trouble."

WANTS, LOSTS, FOUND, ETC

LOST.—A lady's gold watch, between Dawson's Corner and Johnson's Druggist. Finder please leave at this office. 28 31 pd

FOUND.—Yesterday afternoon, on the Eastern train, a purse containing a sum of money and other papers. Owner can have same by applying at P. E. R. ticket office, proving property and paying for this ad. 11

TO LET.—A large hall 40 x 50 feet, corner of Great George and Euston Streets. Apply to George Wheatley. 5 28 d m

Carters' Seeds Grow

Twenty two years buying
and selling seeds.

The largest Seed House in the
Provinces. Business increasing
each year. This is our Record.

The people of this Province depend
on us for their Seed supply and know
when they buy from us that they are
getting the very best seeds that money
can buy. 12,000 copies of our 20th
Century Catalogue issued this year.
You did not get a copy send to us
one they are free.

GEO. CARTER & CO.

Wholesale and Retail Seedsmen

Garden Flower Seeds, For Sowing in May.

Aster in great variety.
Sweet Peas, our Red, White and Blue mixed and so choice varieties.
Nasturtium, our special dwarf mixed and choice climbing.
Poppies, only in beautiful colors, mixed.
Mignonette our special mixture.
Peas our Early Giant, also 5 late varieties.
Beans, pole or climbing. Sparagus or good long Authors, Mammoth, nite, Early Golden Cluster Wax.
Beans, Dwarf or Bush, Keyes rust Proof, Golden Wax, Stringless Green Pod, Perfection Wax, Yosemite Mammoth Wax, also Corn, Squashes, Pumpkins.



Makes Child's Play of Wash Day
SURPRISE SOAP
is a pure hard soap which has remarkable qualities for easy and quick washing. SURPRISE really makes Child's Play of wash day. Try it yourself.
ST. CROIX SOAP MFG. CO.
St. Stephen, N.S.