

Advertisers Who Want to Reach All Classes Always Use This Paper

FIRST SECTION

# THE CHARLOTTETOWN GUARDIAN

PAGES 24

WEEKLY FOUNDED 1887  
DAILY FOUNDED 1901

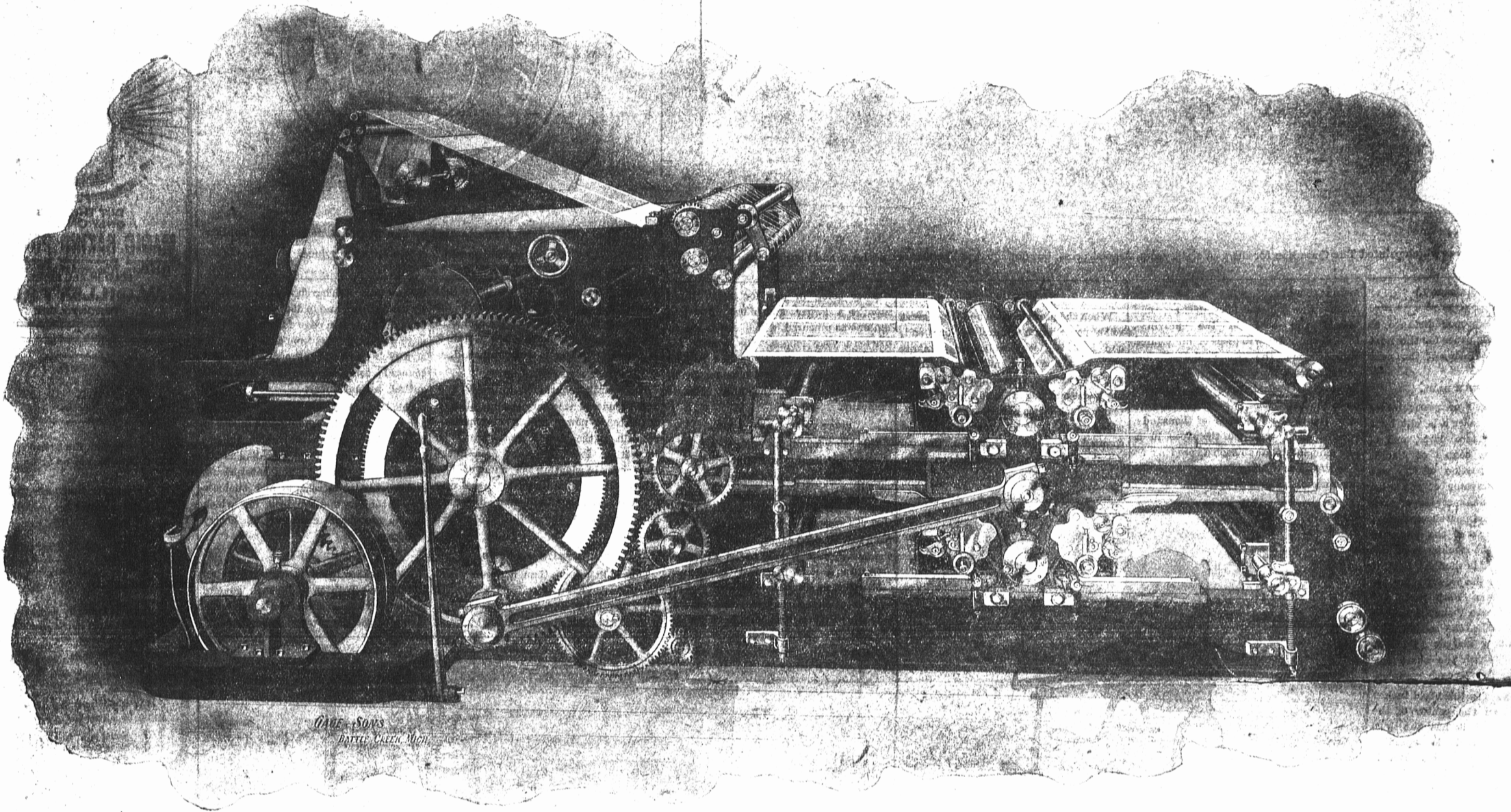
— WEDNESDAY MORNING —

CHARLOTTETOWN, P. E. I., SEPTEMBER 28, 1904.

— WEDNESDAY MORNING —

SINGLE COPY THREE CENTS  
ONE DOLLAR PER YEAR.

The Guardian Newspaper Leading the March of Island Progress



The Guardian's New Duplex Angle-Bar Press, the Wonderful Production of the Duplex Printing Press Co., Battle Creek, Mich.

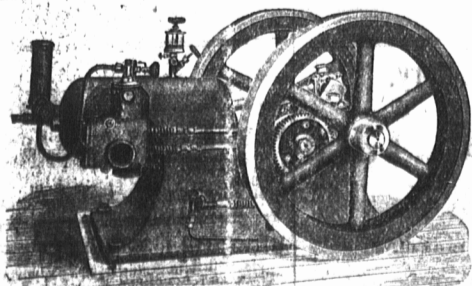
## IMPROVED WEB PERFECTING PRESS MARKS ANOTHER MILESTONE

The Telling Story of But a Few Short Years  
of Rapid Growth

ONE HUNDRED COMPLETE NEWSPAPERS

Of Eight Pages Printed on Both Sides, Finished in  
Every Particular, Cut, Trimmed, Pasted,  
Folded and Counted Automatically  
Each Minute.

Many of The Guardian's readers probably know that during the past few days it has installed a large up-to-date Duplex Web Perfecting Press which prints The Guardian from rolls of paper about six feet in width and from three to five miles in length, without the aid of human hand.



The ten horsepower Goldie & McCulloch Gas Engine which drives The Guardian's Web Perfecting Press.



THE HOME OF THE GUARDIAN

Expected increase in its circulation, and the management has realized the necessity of a faster press than that in use for the past eight years, which when installed was considered to be of ample capacity for at least twenty years. Taking into consideration the present demands and future possibilities it was decided that the best obtainable was none too good.

Correspondence was carried on for two or more years with various manufacturers as to the adaptability of their presses for a circulation such as enjoyed by this journal, but without any definite decision. Within that time a representative visited many printing establish-

ments to obtain all possible information regarding presses.

### MAKING A CHOICE.

In June last, the names of fifty-five users of the Duplex Press were obtained and their opinions asked as to the general utility of the above press for a rapidly increasing circulation of the volume of that of The Guardian. Fifty replies were received all of which were most favorable and many of them gave exceptionally valuable information regarding the many advantages of this Press. The result was the purchase of the present press.

In 1880 there was in existence no printing machine capable of meeting the requirements of publishers of daily newspapers with circulations ranging from 2,000 to 10,000. The hand-fed presses were too slow—the rotary presses, involving stereotyping process, too costly and too cumbersome and expensive in operation.

### THE DUPLEX PRESS.

With the introduction of the Duplex Stationary Flat-bed Web-Perfecting Newspaper Press in 1891 a unique and exceedingly important advance was made in the printing world. It was one of those instances, notable in the history of the mechanical arts, in which an urgent and universal need, constantly becoming more and more pressing, was met by the means of supplying it long sought in vain.

Like most other good things, it was imitated and the company for several years devoted its energies and the greater part of its resources to prosecuting law suits for the infringement of its

patents. All litigation having been ended in its favor some years ago, the Duplex Printing Press Co., Battle Creek, Michigan, has since devoted itself exclusively to the improvement of its product and to enlarging its field of distribution, until today the Duplex Press represents the latest and best development of mechanical skill and genius as applied to printing machinery and in almost every known tongue its types are disseminating information, from Paris, France, where the foreign edition of the New York Herald goes to its readers from a press similar to that which prints these lines, to Valparaiso de Chile, where a second Duplex is now being erected to help in spreading the news of the frequent revolutions which agitate the nitrate republic.

### HOW IT WORKS.

Technically the Guardian's new press is known as a "Flat-bed Web-Perfecting Press. It is a "flat bed press" because

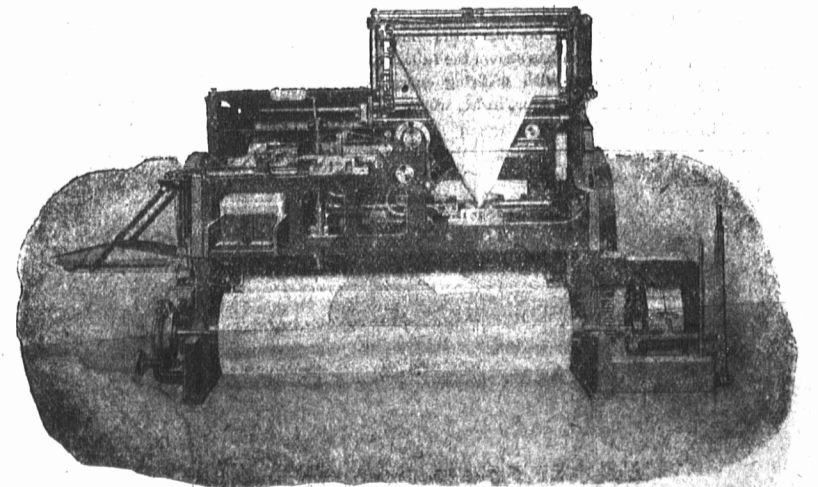
the type-forms from which the paper is printed rest on flat beds. By the term "web-press" is meant that the paper used is a continuous web being fed from a huge roll and not from sheets. And the term "perfecting press" means that a perfect paper is made in a single operation, complete in every detail. This is the interpretation of the technical name, Flat-bed Web-Perfecting Press. It will print either a four, six, or eight page paper of six or seven columns, complete in every particular, cut, trimmed, pasted, folded, and counted automatically, and will operate safely and successfully at the speed of 6,000 an hour, with a greater capacity, if necessary.

It is a solid substantial structure weighing about 25,000 pounds. It rests upon solid brick walls, to avoid vibration, with a pit three and a half feet deep under it, to enable the press-man to obtain access to all parts for cleaning, oiling and attendance.

### PAPER IN A ROLL.

The paper is fed from a roll and passes over the feed rollers near the center of the press; thence over a looping roller operated by equalizer cams and levers; thence it is guided by rolls suitably placed in the printing cylinder, which prints one side of the paper; thence to and under another looping roller, operated by the same mechanism. These looping rollers perform a very important function—that of receiving the constantly incoming paper and at the same time delivering the constantly outgoing web, while the paper between these two looping rolls remains stationary in its path of travel during the time it is being printed upon by the three impression cylinders. Immediately after the impressions are taken, and the printing is done by the cylinders in their travel in either direction, that portion of the web which has been stopped

Continued on page 2.



Side view of The Guardian's four, six and eight page Duplex Press, showing the big roll of paper which is from three to five miles in length, and about six feet in width, also the driving gear and folding device.

Sworn Circulation Greater than of that Any Other Daily Paper In Prince Edward Island.